

Converting Colors

CIELCh(35, 24.777, 18.130)

Have a look what the booklet for
CIELCh(35, 24.777, 18.130) contains.

CIELCh(35, 25.003, 18.251)	3
<i>Conversions</i>	4
<i>Details</i>	6
<i>Harmonies</i>	11
<i>Previews</i>	20
<i>Color Blindness Simulation</i>	23
<i>CSS Examples</i>	26

Color

CIELCh(35, 25.003, 18.251)

Conversions

Conversions Part 1

Format	Color
Hex	794347
RGB	121, 67, 71
RGB Percent	47%, 26%, 28%
CMY	0.5262, 0.7379, 0.7222
CMYK	0.00, 0.45, 0.41, 0.53
HSL	356°, 29%, 37%
HSV	356°, 45%, 47%
XYZ	10.9879, 8.4984, 6.9948
YIQ	83.6020, 30.9000, 12.6920

Conversions

Conversions Part 2

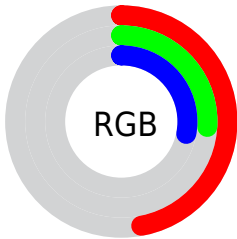
Format	Color
R_{YB}	121, 67, 71
Decimal	7947079
CIE _{Lab}	35.00, 23.75, 7.83
CIE _{LCh}	35, 25.003, 18.251
Yxy	8.4984, 0.4149, 0.3209
Android (android.graphics.Color)	4286137159 (0xFF794347)
YUV	83.6020, -6.2128, 32.7980
Hunter-Lab	29.1520, 16.2638, 6.1801

Details

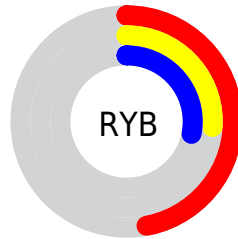
The CIELCh color **35, 25.003, 18.251** is a dark color, and the websafe version is hex **663333**. A complement of this color would be **47, 19.264, 190.210**, and the grayscale version is **35, 0.005, 296.813**.

A 20% lighter version of the original color is **55, 24.933, 18.478**, and **15, 25.346, 17.761** is the 20% darker color. If you saturate the color by 10%, you get **32, 31.254, 20.250**, and if you desaturate by 10%, it is **38, 18.897, 16.675**.

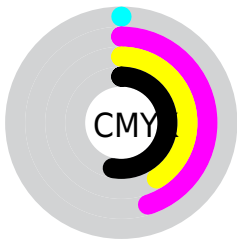
Distribution



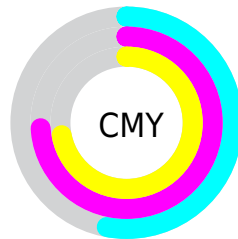
- Red (47%)
- Green (26%)
- Blue (28%)



- Red (47%)
- Yellow (26%)
- Blue (28%)



- Cyan (0%)
- Magenta (45%)
- Yellow (41%)
- Black (53%)



- Cyan (53%)
- Magenta (74%)
- Yellow (72%)

Brightness & Saturation Gradients

These gradients show how the CIELCh color 35, 25.003, 18.251 changes by changing the brightness by 10 percent. The first figure shows a shift by +10% for each color and the second figure -10%.

Similar to the brightness gradients but the following saturation gradients show a change of the CIELCh color 35, 25.003, 18.251 by changing the saturation by 10% instead.

■ 35, 25.003, 18.251

■ 35, 25.003, 18.251

■ 100, 25.003,
18.251

■ 25, 25.003, 18.251

■ 55, 25.003, 18.251

■ 15, 25.003, 18.251

■ 65, 25.003, 18.251

■ 5, 25.003, 18.251

■ 75, 25.003, 18.251

■ 0, 25.003, 18.251

■ 85, 25.003, 18.251

■ 95, 25.003, 18.251

■ 35, 25.003, 18.251

■ 35, 25.003, 18.251

■ 32, 31.254, 20.250

■ 38, 18.897, 16.675

■ 29, 37.498, 22.772

■ 42, 13.048, 15.412

■ 27, 43.540, 25.914

■ 45, 7.515, 14.380

■ 25, 49.182, 29.672

■ 49, 2.318, 13.442

■ 24, 54.189, 33.659

■ 53, 2.546, 193.064

■ 24, 56.409, 34.881

■ 57, 7.095, 192.393

■ 60, 11.354,
191.881

■ 64, 15.352,
191.448

■ 68, 19.116,
191.073

Harmonies

Complementary

The Complementary color scheme is a pair of colors which are on the opposite of each other on the color wheel.



35, 25.003, 18.251



47, 19.264, 190.210

Rectangle

The Rectangle color scheme consists of four colors that form a rectangle on the color wheel.



35, 25.003, 18.251



35, 25.003, 68.251



35, 25.003, 198.251



35, 25.003, 248.251

Sweetspot

The Sweet Spot groups the original color and five complimentary colors.



35, 25.001, 18.254



59, 8.258, 14.253



36, 37.659, 324.223



29, 5.781, 14.426



83, 0.010, 296.813



34, 0.005, 296.813

Same Dimension

The Same Dimension uses a secret algorithm to generate beautiful new colors.



35, 25.001, 18.254



42, 38.515, 20.403



41, 20.541, 61.452



24, 2.861, 13.865



25, 57.995, 35.183



53, 100.781, 37.793

Inverse Universe

The Inverse Universe completely reimagines the original color for something new.



35, 25.001, 18.254



42, 38.515, 20.403



40, 16.986, 252.871



24, 2.861, 13.865



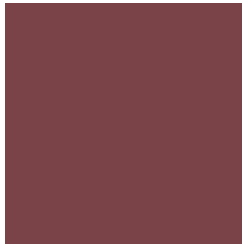
25, 57.995, 35.183



53, 100.781, 37.793

Previews

White Background



This preview shows how the CIELCh color 35, 25.003, 18.251 looks on a white background.

Color Contrast Check

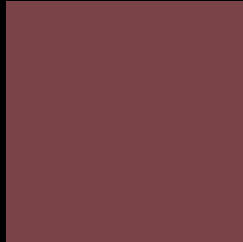
Large Text (above 18pt) WCAG AA ✓ Pass

Any Text WCAG AA ✓ Pass

Large Text (above 18pt) WCAG AAA ✓ Pass

Any Text WCAG AAA ✓ Pass

Black Background



This preview shows how the CIE LCh color 35, 25.003, 18.251 looks on a black background.

Color Contrast Check

Large Text (above 18pt) WCAG AA × Fail

Any Text WCAG AA × Fail

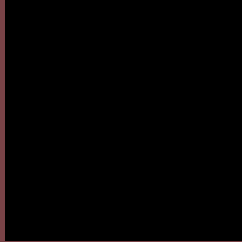
Large Text (above 18pt) WCAG AAA × Fail

Any Text WCAG AAA × Fail

If you want to check with other color combinations, try the [Color Contrast Checker](#).

CIELCh 35, 25.003, 18.251

Background



This preview shows how black text looks on a background with the CIELCh color 35, 25.003, 18.251.



This preview shows how white text looks on a background with the CIELCh color 35, 25.003, 18.251.

Color Blindness Simulation

Color vision deficiency is a very complex topic, and I could not describe the different causes any better than Wikipedia does, so if you want to learn more, you should check out their [article about color blindness](#).

Dichromacy



Original Color

35, 25.003, 18.251

Protanopia

35, 2.270, 74.550

Deuteranopia

35, 10.145, 62.077



Tritanopia
35, 24.943, 16.853

Trichromacy



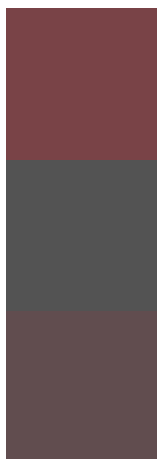
Original Color
35, 25.003, 18.251

Protanomaly
35, 9.932, 20.921

Deuteranomaly
35, 14.389, 33.760

Tritanomaly
35, 24.943, 16.853

Monochromacy



Original Color
35, 25.003, 18.251

Achromatopsia
35, 0.005, 296.813

Achromatomaly
35, 8.985, 12.882

CSS Examples

Text

The CSS property to change the color of the text to CIELCh 35, 25.003, 18.251 is called "color". The color property can be set on classes, ids or directly on the HTML element.

This example shows how text in the color `rgb(121, 67, 71)` looks like.

```
.text, #text, p{  
    color:rgb(121, 67, 71)  
}
```

If you want to add a text shadow in that color use the text-shadow property, you can generate a text shadow directly with our [CSS Text Shadow Generator](#).

Here you see how black text with a 4 pixel rgb(121, 67, 71) colored shadow looks like.

```
.shadow{ text-shadow: 4px 4px 2px rgb(121, 67, 71) }
```

Border

The CSS property to change the border of an element to CIELCh 35, 25.003, 18.251 is called "border". The border property can be set on classes, ids or directly on the HTML element.

This example shows the color as border, it can be applied via the CSS property "border" or "border-color".

```
.border, #border, table{ border:4px solid rgb(121, 67, 71) }
```

If only the border color should be changed use the property border-color.

```
.border{ border-color:rgb(121, 67, 71) }
```

If you want to add a box shadow in that color use:

Here you see how a box with a 4 pixel rgb(121, 67, 71) colored shadow looks like.

```
.boxshadow{ -moz-box-shadow:4px 4px 4px  
4px rgb(121, 67, 71); -webkit-box-  
shadow:4px 4px 4px 4px rgb(121, 67, 71);  
box-shadow:4px 4px 4px 4px rgb(121, 67,  
71) }
```

Background

The CSS property to change the background color of an element to CIELCh 35, 25.003, 18.251 is called "background". The background property can be set on classes, ids or directly on the HTML element.

```
.background, #background, body{  
background: rgb(121, 67, 71) }
```

If only the background color should be changed can be used:

```
.background{ background-color: rgb(121, 67,  
71) }
```

This example shows the color as background, it is applied via the CSS property "background".

To optimize and compress your CSS code, you can use our [online CSS compressor and optimizer](#) based on csstidy. If you want to create a linear or radial gradient as background or border, check our [CSS Gradient Generator](#).

Hey! You found this booklet interesting? Support Converting Colors with the new Membership Option!

The pro membership hides all ads, plus gives you double the colors in the color bucket, and more awesome pro features!

[Learn more, Memberships starting at \\$2.50/m!](#)

**Follow me
on Twitter!**

@ConvertingColor