

Converting Colors

CIELCh(35, 5.469, 77.515)

Have a look what the booklet for
CIELCh(35, 5.469, 77.515) contains.

CIELCh(35, 5.368, 73.594)	3
<i>Conversions</i>	4
<i>Details</i>	6
<i>Harmonies</i>	11
<i>Previews</i>	20
<i>Color Blindness Simulation</i>	23
<i>CSS Examples</i>	26

Color

CIELCh(35, 5.368, 73.594)

Conversions

Conversions Part 1

Format	Color
Hex	58514A
RGB	88, 81, 74
RGB Percent	35%, 32%, 29%
CMY	0.6541, 0.6815, 0.7090
CMYK	0.00, 0.08, 0.16, 0.65
HSL	30°, 9%, 32%
HSV	30°, 16%, 35%
XYZ	8.2457, 8.4984, 7.7210
YIQ	82.2950, 6.4190, -0.6930

Conversions

Conversions Part 2

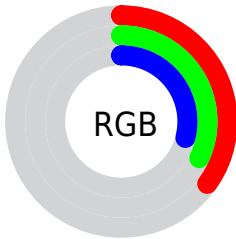
Format	Color
RYB	88, 88, 74
Decimal	5787978
CIELab	35.00, 1.52, 5.15
CIELCh	35, 5.368, 73.594
Yxy	8.4984, 0.3370, 0.3474
Android (android.graphics.Color)	4283978058 (0xFF58514A)
YUV	82.2950, -4.0894, 5.0033
Hunter-Lab	29.1520, -0.5266, 4.7033

Details

The CIELCh color **35, 5.368, 73.594** is a dark color, and the websafe version is hex **666666**. A complement of this color would be **34, 5.174, 257.454**, and the grayscale version is **35, 0.005, 296.813**.

A 20% lighter version of the original color is **55, 5.158, 70.437**, and **15, 5.587, 80.908** is the 20% darker color. If you saturate the color by 10%, you get **33, 8.942, 72.476**, and if you desaturate by 10%, it is **37, 1.944, 74.672**.

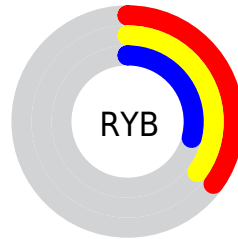
Distribution



 Red (35%)

 Green (32%)

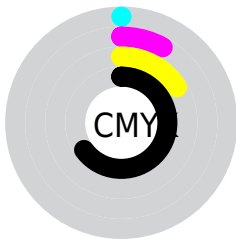
 Blue (29%)



 Red (35%)

 Yellow (35%)

 Blue (29%)

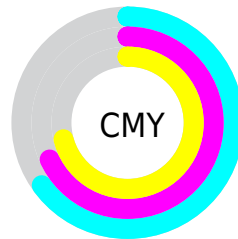


 Cyan (0%)

 Magenta (8%)

 Yellow (16%)

 Black (65%)



 Cyan (65%)

 Magenta (68%)

 Yellow (71%)

Brightness & Saturation Gradients

These gradients show how the CIELCh color 35, 5.368, 73.594 changes by changing the brightness by 10 percent. The first figure shows a shift by +10% for each color and the second figure -10%.

Similar to the brightness gradients but the following saturation gradients show a change of the CIELCh color 35, 5.368, 73.594 by changing the saturation by 10% instead.

 35, 5.368, 73.594  35, 5.368, 73.594

 100, 5.368, 73.594  25, 5.368, 73.594

 55, 5.368, 73.594  15, 5.368, 73.594

 65, 5.368, 73.594  5, 5.368, 73.594

 75, 5.368, 73.594  0, 5.368, 73.594

 85, 5.368, 73.594

 95, 5.368, 73.594

 35, 5.368, 73.594  35, 5.368, 73.594

 33, 8.942, 72.476  37, 1.944, 74.672

 32, 12.672, 71.323  38, 1.343, 256.037

■ 30, 16.558, 70.160

■ 40, 4.505, 257.012

■ 29, 20.585, 68.983

■ 41, 7.554, 258.043

■ 28, 24.710, 67.779

■ 43, 10.501,
259.049

■ 26, 28.837, 66.503

■ 45, 13.359,
260.022

■ 25, 32.775, 65.059

■ 24, 36.061, 63.232

■ 46, 16.136,
260.957

■ 23, 37.392, 62.567

■ 48, 18.841,
261.854

■ 50, 21.482,
262.712

Harmonies

Complementary

The Complementary color scheme is a pair of colors which are on the opposite of each other on the color wheel.



35, 5.368, 73.594



34, 5.174, 257.454

Rectangle

The Rectangle color scheme consists of four colors that form a rectangle on the color wheel.



35, 5.368, 73.594



35, 5.368, 123.594



35, 5.368, 253.594



35, 5.368, 303.594

Sweetspot

The Sweet Spot groups the original color and five complimentary colors.



35, 5.368, 73.608



47, 2.050, 74.737



33, 7.525, 344.873



24, 1.412, 74.697



76, 0.009, 296.813



25, 0.004, 296.813

Same Dimension

The Same Dimension uses a secret algorithm to generate beautiful new colors.



35, 5.368, 73.608



45, 8.045, 73.187



37, 8.593, 108.768



17, 1.836, 74.384



29, 44.286, 62.432



62, 80.282, 59.979

Inverse Universe

The Inverse Universe completely reimagines the original color for something new.



34, 5.174, 257.454



43, 7.676, 257.992



32, 8.884, 291.752



17, 1.804, 256.535



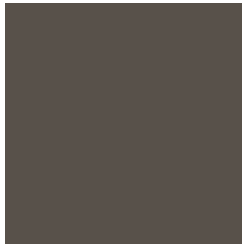
23, 36.322, 281.584



50, 68.858, 284.819

Previews

White Background



This preview shows how the CIE LCh color 35, 5.368, 73.594 looks on a white background.

Color Contrast Check

Large Text (above 18pt) WCAG AA ✓ Pass

Any Text WCAG AA ✓ Pass

Large Text (above 18pt) WCAG AAA ✓ Pass

Any Text WCAG AAA ✓ Pass

Black Background



This preview shows how the CIE LCh color 35, 5.368, 73.594 looks on a black background.

Color Contrast Check

Large Text (above 18pt) WCAG AA × Fail

Any Text WCAG AA × Fail

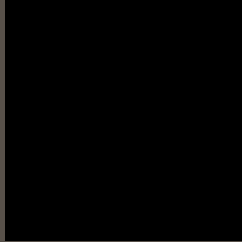
Large Text (above 18pt) WCAG AAA × Fail

Any Text WCAG AAA × Fail

If you want to check with other color combinations, try the [Color Contrast Checker](#).

CIELCh 35, 5.368, 73.594

Background



This preview shows how black text looks on a background with the CIELCh color 35, 5.368, 73.594.

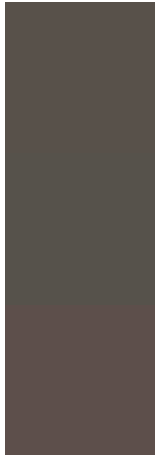


This preview shows how white text looks on a background with the CIELCh color 35, 5.368, 73.594.

Color Blindness Simulation

Color vision deficiency is a very complex topic, and I could not describe the different causes any better than Wikipedia does, so if you want to learn more, you should check out their [article about color blindness](#).

Dichromacy



Original Color

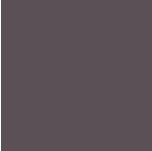
35, 5.368, 73.594

Protanopia

35, 4.693, 87.120

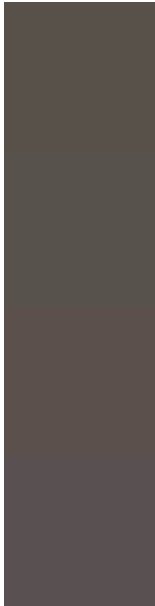
Deuteranopia

35, 6.798, 41.579



Tritanopia
35, 5.706, 339.373

Trichromacy



Original Color

35, 5.368, 73.594

Protanomaly

35, 4.881, 82.230

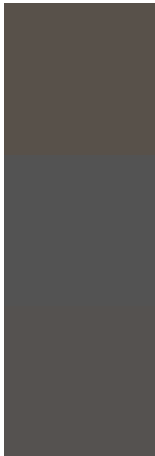
Deuteranomaly

35, 5.849, 51.946

Tritanomaly

35, 4.114, 2.384

Monochromacy



Original Color

35, 5.368, 73.594

Achromatopsia

35, 0.005, 296.813

Achromatomaly

35, 1.793, 63.217

CSS Examples

Text

The CSS property to change the color of the text to CIELCh 35, 5.368, 73.594 is called "color". The color property can be set on classes, ids or directly on the HTML element.

This example shows how text in the color `rgb(88, 81, 74)` looks like.

```
.text, #text, p{  
    color:rgb(88, 81, 74)  
}
```

If you want to add a text shadow in that color use the text-shadow property, you can generate a text shadow directly with our [CSS Text Shadow Generator](#).

Here you see how black text with a 4 pixel rgb(88, 81, 74) colored shadow looks like.

```
.shadow{ text-shadow: 4px 4px 2px rgb(88, 81, 74) }
```

Border

The CSS property to change the border of an element to CIELCh 35, 5.368, 73.594 is called "border". The border property can be set on classes, ids or directly on the HTML element.

This example shows the color as border, it can be applied via the CSS property "border" or "border-color".

```
.border, #border, table{ border:4px solid rgb(88, 81, 74) }
```

If only the border color should be changed use the property border-color.

```
.border{ border-color:rgb(88, 81, 74) }
```

If you want to add a box shadow in that color use:

Here you see how a box with a 4 pixel rgb(88, 81, 74) colored shadow looks like.

```
.boxshadow{ -moz-box-shadow:4px 4px 4px  
4px rgb(88, 81, 74); -webkit-box-  
shadow:4px 4px 4px 4px rgb(88, 81, 74);  
box-shadow:4px 4px 4px 4px rgb(88, 81, 74)  
}
```

Background

The CSS property to change the background color of an element to CIELCh 35, 5.368, 73.594 is called "background". The background property can be set on classes, ids or directly on the HTML element.

```
.background, #background, body{  
background: rgb(88, 81, 74) }
```

If only the background color should be changed can be used:

```
.background{ background-color: rgb(88, 81,  
74) }
```

This example shows the color as background, it is applied via the CSS property "background".

To optimize and compress your CSS code, you can use our [online CSS compressor and optimizer](#) based on csstidy. If you want to create a linear or radial gradient as background or border, check our [CSS Gradient Generator](#).

Hey! You found this booklet interesting? Support Converting Colors with the new Membership Option!

The pro membership hides all ads, plus gives you double the colors in the color bucket, and more awesome pro features!

[Learn more, Memberships starting at \\$2.50/m!](#)

**Follow me
on Twitter!**

@ConvertingColor