

Converting Colors

CIELCh(35, 5.752, 14.172)

Have a look what the booklet for
CIELCh(35, 5.752, 14.172) contains.

CIELCh(35, 5.763, 14.064)	3
<i>Conversions</i>	4
<i>Details</i>	6
<i>Harmonies</i>	11
<i>Previews</i>	20
<i>Color Blindness Simulation</i>	23
<i>CSS Examples</i>	26

Color

CIELCh(35, 5.763, 14.064)

Conversions

Conversions Part 1

Format	Color
Hex	5C4F50
RGB	92, 79, 80
RGB Percent	36%, 31%, 31%
CMY	0.6382, 0.6892, 0.6853
CMYK	0.00, 0.14, 0.13, 0.64
HSL	355°, 8%, 34%
HSV	355°, 14%, 36%
XYZ	8.7095, 8.4984, 8.8182
YIQ	83.0010, 7.4270, 3.0670

Conversions

Conversions Part 2

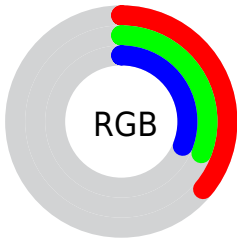
Format	Color
RYB	92, 79, 80
Decimal	6049616
CIELab	35.00, 5.59, 1.40
CIELCh	35, 5.763, 14.064
Yxy	8.4984, 0.3346, 0.3265
Android (android.graphics.Color)	4284239696 (0xFF5C4F50)
YUV	83.0010, -1.4795, 7.8921
Hunter-Lab	29.1520, 2.3130, 2.4718

Details

The CIELCh color **35, 5.763, 14.064** is a dark color, and the websafe version is hex **666666**. A complement of this color would be **38, 5.366, 192.155**, and the grayscale version is **35, 0.005, 296.813**.

A 20% lighter version of the original color is **55, 5.672, 14.168**, and **15, 5.590, 13.633** is the 20% darker color. If you saturate the color by 10%, you get **32, 10.162, 15.057**, and if you desaturate by 10%, it is **38, 1.623, 13.145**.

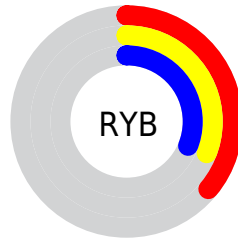
Distribution



 Red (36%)

 Green (31%)

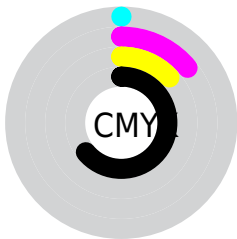
 Blue (31%)



 Red (36%)

 Yellow (31%)

 Blue (31%)

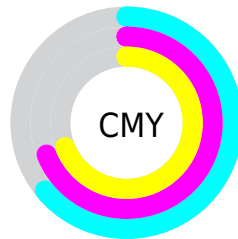


 Cyan (0%)

 Magenta (14%)

 Yellow (13%)

 Black (64%)



 Cyan (64%)

 Magenta (69%)

 Yellow (69%)

Brightness & Saturation Gradients

These gradients show how the CIELCh color 35, 5.763, 14.064 changes by changing the brightness by 10 percent. The first figure shows a shift by +10% for each color and the second figure -10%.

Similar to the brightness gradients but the following saturation gradients show a change of the CIELCh color 35, 5.763, 14.064 by changing the saturation by 10% instead.

 35, 5.763, 14.064  35, 5.763, 14.064

 100, 5.763, 14.064  25, 5.763, 14.064

 55, 5.763, 14.064  15, 5.763, 14.064


 65, 5.763, 14.064  5, 5.763, 14.064

 75, 5.763, 14.064  0, 5.763, 14.064

 85, 5.763, 14.064

 95, 5.763, 14.064

 35, 5.763, 14.064  35, 5.763, 14.064

 32, 10.162, 15.057  38, 1.623, 13.145

 29, 14.808, 16.246  41, 2.260, 192.810

27, 19.660, 17.717

44, 5.899, 192.164

24, 24.644, 19.559

47, 9.315, 191.664

22, 29.649, 21.872

50, 12.528,
191.237

20, 34.534, 24.749

53, 15.559,
190.866

19, 39.151, 28.227

18, 42.960, 30.909

56, 18.428,
190.539

17, 44.906, 31.449

59, 21.152,
190.248

62, 23.749,
189.987

Harmonies

Complementary

The Complementary color scheme is a pair of colors which are on the opposite of each other on the color wheel.



35, 5.763, 14.064



38, 5.366, 192.155

Rectangle

The Rectangle color scheme consists of four colors that form a rectangle on the color wheel.



35, 5.763, 14.064



35, 5.763, 64.064



35, 5.763, 194.064



35, 5.763, 244.064

Sweetspot

The Sweet Spot groups the original color and five complimentary colors.



35, 5.762, 14.074



49, 1.965, 13.149



35, 9.557, 322.812



25, 1.410, 13.212



77, 0.009, 296.813



26, 0.004, 296.813

Same Dimension

The Same Dimension uses a secret algorithm to generate beautiful new colors.



35, 5.762, 14.074



44, 8.713, 14.393



37, 4.736, 64.464



17, 2.243, 13.604



21, 51.976, 33.764



50, 95.849, 37.566

Inverse Universe

The Inverse Universe completely reimagines the original color for something new.



35, 5.762, 14.074



44, 8.713, 14.393



36, 4.504, 247.513



17, 2.243, 13.604



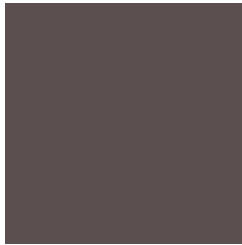
21, 51.976, 33.764



50, 95.849, 37.566

Previews

White Background



This preview shows how the CIELCh color 35, 5.763, 14.064 looks on a white background.

Color Contrast Check

Large Text (above 18pt) WCAG AA ✓ Pass

Any Text WCAG AA ✓ Pass

Large Text (above 18pt) WCAG AAA ✓ Pass

Any Text WCAG AAA ✓ Pass

Black Background



This preview shows how the CIE LCh color 35, 5.763, 14.064 looks on a black background.

Color Contrast Check

Large Text (above 18pt) WCAG AA × Fail

Any Text WCAG AA × Fail

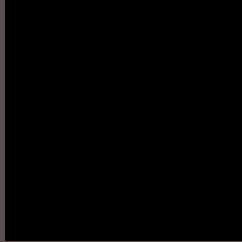
Large Text (above 18pt) WCAG AAA × Fail

Any Text WCAG AAA × Fail

If you want to check with other color combinations, try the [Color Contrast Checker](#).

CIELCh 35, 5.763, 14.064

Background



This preview shows how black text looks on a background with the CIELCh color 35, 5.763, 14.064.

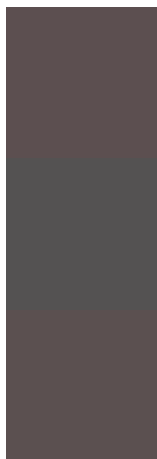


This preview shows how white text looks on a background with the CIELCh color 35, 5.763, 14.064.

Color Blindness Simulation

Color vision deficiency is a very complex topic, and I could not describe the different causes any better than Wikipedia does, so if you want to learn more, you should check out their [article about color blindness](#).

Dichromacy



Original Color

35, 5.763, 14.064

Protanopia

35, 0.862, 19.194

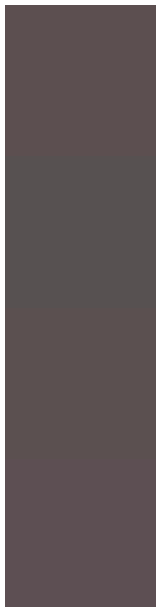
Deuteranopia

35, 4.841, 20.068



Tritanopia
35, 7.119, 348.926

Trichromacy



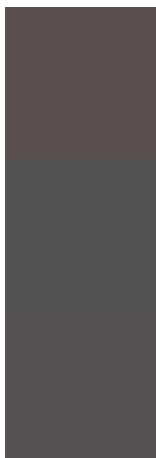
Original Color
35, 5.763, 14.064

Protanomaly
35, 2.611, 19.679

Deuteranomaly
35, 4.841, 20.068

Tritanomaly
35, 6.593, 358.288

Monochromacy



Original Color
35, 5.763, 14.064

Achromatopsia
35, 0.005, 296.813

Achromatomaly
35, 1.730, 19.490

CSS Examples

Text

The CSS property to change the color of the text to CIELCh 35, 5.763, 14.064 is called "color". The color property can be set on classes, ids or directly on the HTML element.

This example shows how text in the color `rgb(92, 79, 80)` looks like.

```
.text, #text, p{  
    color:rgb(92, 79, 80)  
}
```

If you want to add a text shadow in that color use the text-shadow property, you can generate a text shadow directly with our [CSS Text Shadow Generator](#).

Here you see how black text with a 4 pixel rgb(92, 79, 80) colored shadow looks like.

```
.shadow{ text-shadow: 4px 4px 2px rgb(92, 79, 80) }
```

Border

The CSS property to change the border of an element to CIELCh 35, 5.763, 14.064 is called "border". The border property can be set on classes, ids or directly on the HTML element.

This example shows the color as border, it can be applied via the CSS property "border" or "border-color".

```
.border, #border, table{ border:4px solid rgb(92, 79, 80) }
```

If only the border color should be changed use the property `border-color`.

```
.border{ border-color:rgb(92, 79, 80) }
```

If you want to add a box shadow in that color use:

Here you see how a box with a 4 pixel `rgb(92, 79, 80)` colored shadow looks like.

```
.boxshadow{ -moz-box-shadow:4px 4px 4px  
4px rgb(92, 79, 80); -webkit-box-  
shadow:4px 4px 4px 4px rgb(92, 79, 80);  
box-shadow:4px 4px 4px 4px rgb(92, 79, 80)  
}
```

Background

The CSS property to change the background color of an element to CIELCh 35, 5.763, 14.064 is called "background". The background property can be set on classes, ids or directly on the HTML element.

```
.background, #background, body{  
background: rgb(92, 79, 80) }
```

If only the background color should be changed can be used:

```
.background{ background-color: rgb(92, 79,  
80) }
```

This example shows the color as background, it is applied via the CSS property "background".

To optimize and compress your CSS code, you can use our [online CSS compressor and optimizer](#) based on csstidy. If you want to create a linear or radial gradient as background or border, check our [CSS Gradient Generator](#).

Hey! You found this booklet interesting? Support Converting Colors with the new Membership Option!

The pro membership hides all ads, plus gives you double the colors in the color bucket, and more awesome pro features!

[Learn more, Memberships starting at \\$2.50/m!](#)

**Follow me
on Twitter!**

@ConvertingColor