

Converting Colors

CIELCh(35, 6.696, 37.663)

Have a look what the booklet for
CIELCh(35, 6.696, 37.663) contains.

CIELCh(35, 6.565, 36.672)	3
<i>Conversions</i>	4
<i>Details</i>	6
<i>Harmonies</i>	11
<i>Previews</i>	20
<i>Color Blindness Simulation</i>	23
<i>CSS Examples</i>	26

Color

CIELCh(35, 6.565, 36.672)

Conversions

Conversions Part 1

Format	Color
Hex	5D4F4C
RGB	93, 79, 76
RGB Percent	36%, 31%, 30%
CMY	0.6342, 0.6891, 0.7009
CMYK	0.00, 0.15, 0.18, 0.63
HSL	11°, 10%, 33%
HSV	11°, 18%, 37%
XYZ	8.6719, 8.4984, 8.0699
YIQ	82.8440, 9.3070, 2.0350

Conversions

Conversions Part 2

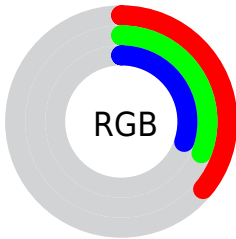
Format	Color
RYB	93, 80, 76
Decimal	6115148
CIELab	35.00, 5.27, 3.92
CIElCh	35, 6.565, 36.672
Yxy	8.4984, 0.3436, 0.3367
Android (android.graphics.Color)	4284305228 (0xFF5D4F4C)
YUV	82.8440, -3.3741, 8.9068
Hunter-Lab	29.1520, 2.0829, 3.9937

Details

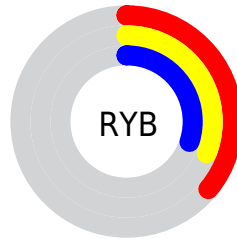
The CIELCh color **35, 6.565, 36.672** is a dark color, and the websafe version is hex **666666**. A complement of this color would be **37, 5.872, 217.227**, and the grayscale version is **35, 0.005, 296.813**.

A 20% lighter version of the original color is **55, 6.355, 35.597**, and **15, 6.641, 39.183** is the 20% darker color. If you saturate the color by 10%, you get **33, 10.567, 36.814**, and if you desaturate by 10%, it is **38, 2.853, 36.623**.

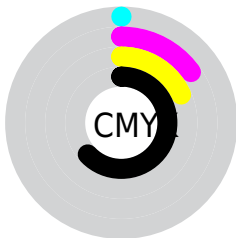
Distribution



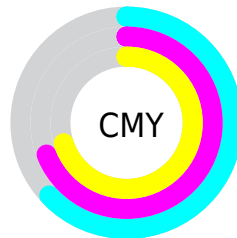
- Red (36%)
- Green (31%)
- Blue (30%)



- Red (36%)
- Yellow (31%)
- Blue (30%)



- Cyan (0%)
- Magenta (15%)
- Yellow (18%)
- Black (63%)



- Cyan (63%)
- Magenta (69%)
- Yellow (70%)

Brightness & Saturation Gradients

These gradients show how the CIELCh color 35, 6.565, 36.672 changes by changing the brightness by 10 percent. The first figure shows a shift by +10% for each color and the second figure -10%.

Similar to the brightness gradients but the following saturation gradients show a change of the CIELCh color 35, 6.565, 36.672 by changing the saturation by 10% instead.

 35, 6.565, 36.672  35, 6.565, 36.672

 100, 6.565, 36.672  25, 6.565, 36.672

 55, 6.565, 36.672  15, 6.565, 36.672


 65, 6.565, 36.672  5, 6.565, 36.672

 75, 6.565, 36.672  0, 6.565, 36.672

 85, 6.565, 36.672

 95, 6.565, 36.672

 35, 6.565, 36.672  35, 6.565, 36.672

 33, 10.567, 36.814  38, 2.853, 36.623

 30, 14.875, 37.079  40, 0.590, 217.357

■ 28, 19.493, 37.519

■ 43, 3.789, 217.061

■ 26, 24.405, 38.169

■ 45, 6.769, 217.229

■ 24, 29.559, 39.050

■ 48, 9.554, 217.455

■ 22, 34.849, 40.141

■ 50, 12.167,
217.714

■ 20, 39.655, 40.660

■ 53, 14.628,
217.992

■ 19, 43.441, 40.491

■ 19, 44.071, 40.550

■ 56, 16.954,
218.283

■ 58, 19.162,
218.580

Harmonies

Complementary

The Complementary color scheme is a pair of colors which are on the opposite of each other on the color wheel.



35, 6.565, 36.672



37, 5.872, 217.227

Rectangle

The Rectangle color scheme consists of four colors that form a rectangle on the color wheel.



35, 6.565, 36.672



35, 6.565, 86.672



35, 6.565, 216.672



35, 6.565, 266.672

Sweetspot

The Sweet Spot groups the original color and five complimentary colors.



35, 6.564, 36.684



50, 2.141, 36.574



35, 11.424, 330.409



25, 1.449, 36.585



77, 0.009, 296.813



26, 0.004, 296.813

Same Dimension

The Same Dimension uses a secret algorithm to generate beautiful new colors.



35, 6.564, 36.684



44, 10.078, 36.728



37, 7.409, 88.984



17, 1.919, 36.627



23, 51.120, 41.787



51, 95.280, 42.484

Inverse Universe

The Inverse Universe completely reimagines the original color for something new.



37, 5.872, 217.227



48, 8.747, 217.372



35, 7.385, 273.483



18, 1.824, 217.040



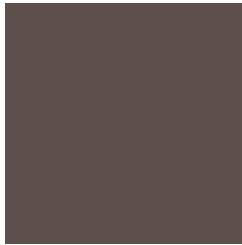
35, 23.386, 228.667



73, 41.285, 231.058

Previews

White Background



This preview shows how the CIELCh color 35, 6.565, 36.672 looks on a white background.

Color Contrast Check

Large Text (above 18pt) WCAG AA ✓ Pass

Any Text WCAG AA ✓ Pass

Large Text (above 18pt) WCAG AAA ✓ Pass

Any Text WCAG AAA ✓ Pass

Black Background



This preview shows how the CIE LCh color 35, 6.565, 36.672 looks on a black background.

Color Contrast Check

Large Text (above 18pt) WCAG AA × Fail

Any Text WCAG AA × Fail

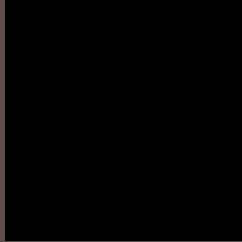
Large Text (above 18pt) WCAG AAA × Fail

Any Text WCAG AAA × Fail

If you want to check with other color combinations, try the [Color Contrast Checker](#).

CIELCh 35, 6.565, 36.672

Background



This preview shows how black text looks on a background with the CIELCh color 35, 6.565, 36.672.



This preview shows how white text looks on a background with the CIELCh color 35, 6.565, 36.672.

Color Blindness Simulation

Color vision deficiency is a very complex topic, and I could not describe the different causes any better than Wikipedia does, so if you want to learn more, you should check out their [article about color blindness](#).

Dichromacy



Original Color


35, 6.565, 36.672

Protanopia

35, 2.804, 81.730

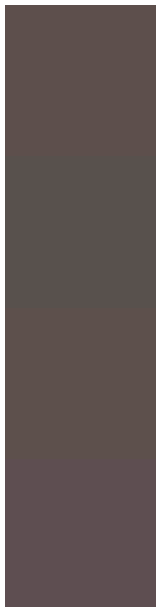
Deuteranopia

35, 6.354, 43.045



Tritanopia
35, 7.893, 352.461

Trichromacy



Original Color
35, 6.565, 36.672

Protanomaly
35, 3.973, 58.356

Deuteranomaly
35, 6.354, 43.045

Tritanomaly
35, 7.280, 5.714

Monochromacy



Original Color
35, 6.565, 36.672

Achromatopsia
35, 0.005, 296.813

Achromatomaly
35, 2.258, 35.524

CSS Examples

Text

The CSS property to change the color of the text to CIELCh 35, 6.565, 36.672 is called "color". The color property can be set on classes, ids or directly on the HTML element.

This example shows how text in the color `rgb(93, 79, 76)` looks like.

```
.text, #text, p{  
    color:rgb(93, 79, 76)  
}
```

If you want to add a text shadow in that color use the text-shadow property, you can generate a text shadow directly with our [CSS Text Shadow Generator](#).

Here you see how black text with a 4 pixel rgb(93, 79, 76) colored shadow looks like.

```
.shadow{ text-shadow: 4px 4px 2px rgb(93, 79, 76) }
```

Border

The CSS property to change the border of an element to CIELCh 35, 6.565, 36.672 is called "border". The border property can be set on classes, ids or directly on the HTML element.

This example shows the color as border, it can be applied via the CSS property "border" or "border-color".

```
.border, #border, table{ border:4px solid rgb(93, 79, 76) }
```

If only the border color should be changed use the property border-color.

```
.border{ border-color:rgb(93, 79, 76) }
```

If you want to add a box shadow in that color use:

Here you see how a box with a 4 pixel rgb(93, 79, 76) colored shadow looks like.

```
.boxshadow{ -moz-box-shadow:4px 4px 4px  
4px rgb(93, 79, 76); -webkit-box-  
shadow:4px 4px 4px 4px rgb(93, 79, 76);  
box-shadow:4px 4px 4px 4px rgb(93, 79, 76)  
}
```

Background

The CSS property to change the background color of an element to CIELCh 35, 6.565, 36.672 is called "background". The background property can be set on classes, ids or directly on the HTML element.

```
.background, #background, body{  
background: rgb(93, 79, 76) }
```

If only the background color should be changed can be used:

```
.background{ background-color: rgb(93, 79,  
76) }
```

This example shows the color as background, it is applied via the CSS property "background".

To optimize and compress your CSS code, you can use our [online CSS compressor and optimizer](#) based on csstidy. If you want to create a linear or radial gradient as background or border, check our [CSS Gradient Generator](#).

Hey! You found this booklet interesting? Support Converting Colors with the new Membership Option!

The pro membership hides all ads, plus gives you double the colors in the color bucket, and more awesome pro features!

[Learn more, Memberships starting at \\$2.50/m!](#)

**Follow me
on Twitter!**

@ConvertingColor