

# Converting Colors

CIELCh(36, 13.218, 5.854)

Have a look what the booklet for  
CIELCh(36, 13.218, 5.854) contains.

<b>CIELCh(36, 13.308, 5.481)</b> .....	3
<i><b>Conversions</b></i> .....	4
<i><b>Details</b></i> .....	6
<i><b>Harmonies</b></i> .....	11
<i><b>Previews</b></i> .....	20
<i><b>Color Blindness Simulation</b></i> .....	23
<i><b>CSS Examples</b></i> .....	26

**Color**

**CIELCh(36, 13.308, 5.481)**

# Conversions

## Conversions Part 1

Format	Color
Hex	6A4D53
RGB	106, 77, 83
RGB Percent	42%, 30%, 33%
CMY	0.5841, 0.6978, 0.6743
CMYK	0.00, 0.27, 0.22, 0.58
HSL	348°, 16%, 36%
HSV	348°, 27%, 42%
XYZ	10.1716, 9.0082, 9.3971
YIQ	86.3550, 15.3580, 8.0140

# Conversions

## Conversions Part 2

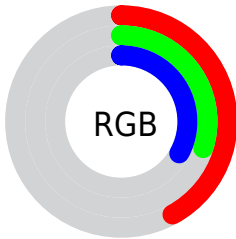
Format	Color
<b>R<sub>YB</sub></b>	106, 77, 83
Decimal	6966611
CIE Lab	36.00, 13.25, 1.27
CIE LCh	36, 13.308, 5.481
Yxy	9.0082, 0.3559, 0.3152
Android (android.graphics.Color)	4285156691 (0xFF6A4D53)
YUV	86.3550, -1.6540, 17.2287
Hunter-Lab	30.0136, 7.9697, 2.4462

# Details

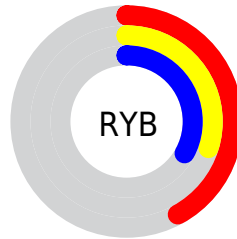
The CIELCh color **36, 13.308, 5.481** is a dark color, and the websafe version is hex **666666**. A complement of this color would be **42, 11.997, 180.360**, and the grayscale version is **37, 0.005, 296.813**.

A 20% lighter version of the original color is **56, 13.406, 6.188**, and **16, 13.596, 5.633** is the 20% darker color. If you saturate the color by 10%, you get **33, 18.519, 6.872**, and if you desaturate by 10%, it is **39, 8.255, 4.315**.

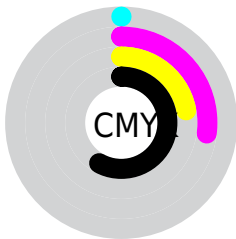
# Distribution



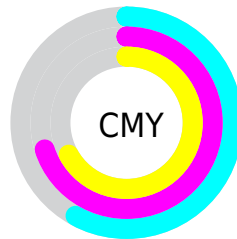
- Red (42%)
- Green (30%)
- Blue (33%)



- Red (42%)
- Yellow (30%)
- Blue (33%)



- Cyan (0%)
- Magenta (27%)
- Yellow (22%)
- Black (58%)



- Cyan (58%)
- Magenta (70%)
- Yellow (67%)

# Brightness & Saturation Gradients

These gradients show how the CIELCh color 36, 13.308, 5.481 changes by changing the brightness by 10 percent. The first figure shows a shift by +10% for each color and the second figure -10%.


Similar to the brightness gradients but the following saturation gradients show a change of the CIELCh color 36, 13.308, 5.481 by changing the saturation by 10% instead.



 36, 13.308, 5.481       36, 13.308, 5.481

 100, 13.308, 5.481       26, 13.308, 5.481

 56, 13.308, 5.481       16, 13.308, 5.481

 66, 13.308, 5.481       6, 13.308, 5.481

 76, 13.308, 5.481       0, 13.308, 5.481

 86, 13.308, 5.481

 96, 13.308, 5.481

 36, 13.308, 5.481       36, 13.308, 5.481

 33, 18.519, 6.872       39, 8.255, 4.315

 30, 23.804, 8.553       42, 3.413, 3.276

■ 27, 29.029, 10.624

■ 46, 1.199, 182.787

■ 25, 34.021, 13.207

■ 49, 5.577, 181.833

■ 23, 38.594, 16.431

■ 52, 9.729, 181.148

■ 22, 42.610, 20.399

■ 56, 13.672,  
180.548

■ 21, 46.295, 24.748

■ 59, 17.420,  
180.011

■ 21, 47.347, 25.782

■ 63, 20.993,  
179.524

■ 66, 24.407,  
179.079

# Harmonies

# Complementary

The Complementary color scheme is a pair of colors which are on the opposite of each other on the color wheel.



36, 13.308, 5.481



42, 11.997, 180.360

# Rectangle

The Rectangle color scheme consists of four colors that form a rectangle on the color wheel.



36, 13.308, 5.481



36, 13.308, 55.481



36, 13.308, 185.481



36, 13.308, 235.481

# Sweetspot

The Sweet Spot groups the original color and five complimentary colors.



36, 13.307, 5.485



54, 4.615, 3.367



36, 20.195, 319.438



27, 3.265, 3.488



79, 0.010, 296.813



29, 0.005, 296.813



# Same Dimension

The Same Dimension uses a secret algorithm to generate beautiful new colors.



36, 13.307, 5.485



44, 20.154, 6.367



38, 10.778, 48.120



21, 2.642, 3.444



23, 51.123, 26.486



51, 90.525, 29.984





# Inverse Universe

The Inverse Universe completely reimagines the original color for something new.



36, 13.307, 5.485



44, 20.154, 6.367



40, 9.210, 231.715



21, 2.642, 3.444



23, 51.123, 26.486

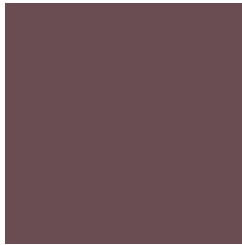


51, 90.525, 29.984



# Previews

## White Background



This preview shows how the CIE LCh color 36, 13.308, 5.481 looks on a white background.

## Color Contrast Check

Large Text (above 18pt) WCAG AA ✓ Pass

Any Text WCAG AA ✓ Pass

Large Text (above 18pt) WCAG AAA ✓ Pass

Any Text WCAG AAA ✓ Pass

# Black Background



This preview shows how the CIE LCh color 36, 13.308, 5.481 looks on a black background.

## Color Contrast Check

Large Text (above 18pt) WCAG AA × Fail

Any Text WCAG AA × Fail

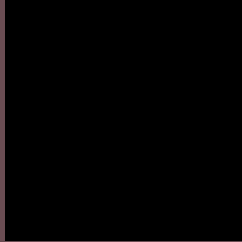
Large Text (above 18pt) WCAG AAA × Fail

Any Text WCAG AAA × Fail

If you want to check with other color combinations, try the [Color Contrast Checker](#).

**CIELCh 36, 13.308, 5.481**

## **Background**



This preview shows how black text looks on a background with the CIELCh color 36, 13.308, 5.481.

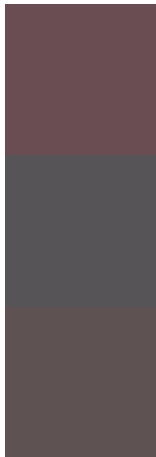


This preview shows how white text looks on a background with the CIELCh color 36, 13.308, 5.481.

# Color Blindness Simulation

Color vision deficiency is a very complex topic, and I could not describe the different causes any better than Wikipedia does, so if you want to learn more, you should check out their [article about color blindness](#).

## Dichromacy



### Original Color

36, 13.308, 5.481

### Protanopia

36, 2.060, 314.753

### Deuteranopia

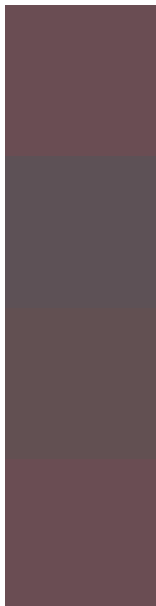
36, 5.266, 20.122



**Tritanopia**  
36, 13.308, 5.481



# Trichromacy



**Original Color**  
36, 13.308, 5.481

**Protanomaly**  
36, 6.041, 349.447

**Deuteranomaly**  
36, 8.030, 11.780

**Tritanomaly**  
36, 13.308, 5.481

# Monochromacy



**Original Color**  
36, 13.308, 5.481

**Achromatopsia**  
37, 0.005, 296.813

**Achromatomaly**  
36, 4.507, 4.123

# CSS Examples

## Text

The CSS property to change the color of the text to CIELCh 36, 13.308, 5.481 is called "color". The color property can be set on classes, ids or directly on the HTML element.

This example shows how text in the color `rgb(106, 77, 83)` looks like.

```
.text, #text, p{  
    color:rgb(106, 77, 83)  
}
```

If you want to add a text shadow in that color use the text-shadow property, you can generate a text shadow directly with our [CSS Text Shadow Generator](#).

Here you see how black text with a 4 pixel rgb(106, 77, 83) colored shadow looks like.

```
.shadow{ text-shadow: 4px 4px 2px rgb(106, 77, 83) }
```

## Border

The CSS property to change the border of an element to CIELCh 36, 13.308, 5.481 is called "border". The border property can be set on classes, ids or directly on the HTML element.

This example shows the color as border, it can be applied via the CSS property "border" or "border-color".

```
.border, #border, table{ border:4px solid rgb(106, 77, 83) }
```

If only the border color should be changed use the property border-color.

```
.border{ border-color:rgb(106, 77, 83) }
```

If you want to add a box shadow in that color use:

Here you see how a box with a 4 pixel rgb(106, 77, 83) colored shadow looks like.

```
.boxshadow{ -moz-box-shadow:4px 4px 4px  
4px rgb(106, 77, 83); -webkit-box-  
shadow:4px 4px 4px 4px rgb(106, 77, 83);  
box-shadow:4px 4px 4px 4px rgb(106, 77,  
83) }
```

# Background

The CSS property to change the background color of an element to CIELCh 36, 13.308, 5.481 is called "background". The background property can be set on classes, ids or directly on the HTML element.

```
.background, #background, body{  
background: rgb(106, 77, 83) }
```

If only the background color should be changed can be used:

```
.background{ background-color: rgb(106, 77,  
83) }
```

This example shows the color as background, it is applied via the CSS property "background".

To optimize and compress your CSS code, you can use our [online CSS compressor and optimizer](#) based on csstidy. If you want to create a linear or radial gradient as background or border, check our [CSS Gradient Generator](#).

Hey! You found this booklet interesting? Support Converting Colors with the new Membership Option!

The pro membership hides all ads, plus gives you double the colors in the color bucket, and more awesome pro features!

**[Learn more, Memberships starting at \\$2.50/m!](#)**

**Follow me  
on Twitter!**

@ConvertingColor