

Converting Colors

CIELCh(36, 8.107, 54.044)

Have a look what the booklet for
CIELCh(36, 8.107, 54.044) contains.

CIELCh(36, 8.095, 57.534)	3
<i>Conversions</i>	4
<i>Details</i>	6
<i>Harmonies</i>	11
<i>Previews</i>	20
<i>Color Blindness Simulation</i>	23
<i>CSS Examples</i>	26

Color

CIELCh(36, 8.095, 57.534)

Conversions

Conversions Part 1

Format	Color
Hex	60524A
RGB	96, 82, 74
RGB Percent	38%, 32%, 29%
CMY	0.6237, 0.6786, 0.7099
CMYK	0.00, 0.15, 0.23, 0.62
HSL	22°, 13%, 33%
HSV	22°, 23%, 38%
XYZ	9.0697, 9.0082, 7.7332
YIQ	85.2740, 10.9120, 0.4800

Conversions

Conversions Part 2

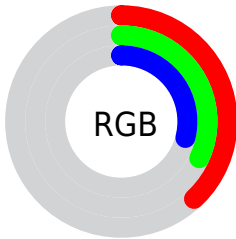
Format	Color
R_{YB}	96, 87, 74
Decimal	6312522
CIE _{Lab}	36.00, 4.35, 6.83
CIE _{LCh}	36, 8.095, 57.534
Yxy	9.0082, 0.3514, 0.3490
Android (android.graphics.Color)	4284502602 (0xFF60524A)
YUV	85.2740, -5.5581, 9.4067
Hunter-Lab	30.0136, 1.4163, 5.7330

Details

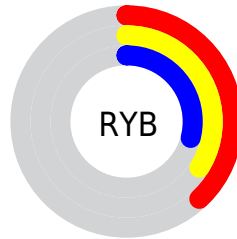
The CIELCh color **36, 8.095, 57.534** is a dark color, and the websafe version is hex **666666**. A complement of this color would be **37, 7.289, 241.925**, and the grayscale version is **36, 0.005, 296.813**.

A 20% lighter version of the original color is **56, 8.028, 54.419**, and **16, 8.116, 57.187** is the 20% darker color. If you saturate the color by 10%, you get **34, 12.011, 56.788**, and if you desaturate by 10%, it is **38, 4.420, 58.323**.

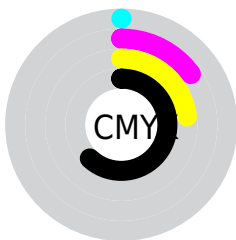
Distribution



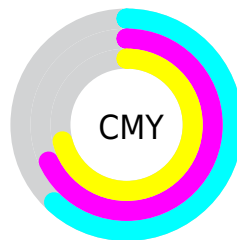
- Red (38%)
- Green (32%)
- Blue (29%)



- Red (38%)
- Yellow (34%)
- Blue (29%)



- Cyan (0%)
- Magenta (15%)
- Yellow (23%)
- Black (62%)



- Cyan (62%)
- Magenta (68%)
- Yellow (71%)

Brightness & Saturation Gradients


These gradients show how the CIELCh color 36, 8.095, 57.534 changes by changing the brightness by 10 percent. The first figure shows a shift by +10% for each color and the second figure -10%.

Similar to the brightness gradients but the following saturation gradients show a change of the CIELCh color 36, 8.095, 57.534 by changing the saturation by 10% instead.

 36, 8.095, 57.534  36, 8.095, 57.534

 100, 8.095, 57.534  26, 8.095, 57.534

 56, 8.095, 57.534  16, 8.095, 57.534

 66, 8.095, 57.534  6, 8.095, 57.534

 76, 8.095, 57.534  0, 8.095, 57.534

 86, 8.095, 57.534

 96, 8.095, 57.534

 36, 8.095, 57.534  36, 8.095, 57.534

 34, 12.011, 56.788  38, 4.420, 58.323

 32, 16.183, 56.077  40, 0.967, 58.934

■ 30, 20.614, 55.422

■ 42, 2.284, 240.185

■ 28, 25.282, 54.822

■ 44, 5.356, 240.966

■ 27, 30.123, 54.249

■ 46, 8.268, 241.794

■ 25, 34.986, 53.619

■ 49, 11.038,
242.621

■ 24, 39.242, 52.405

■ 51, 13.684,
243.435

■ 23, 41.972, 51.544

■ 53, 16.219,
244.230

■ 55, 18.658,
245.003

Harmonies

Complementary

The Complementary color scheme is a pair of colors which are on the opposite of each other on the color wheel.



36, 8.095, 57.534



37, 7.289, 241.925

Rectangle

The Rectangle color scheme consists of four colors that form a rectangle on the color wheel.



36, 8.095, 57.534



36, 8.095, 107.534



36, 8.095, 237.534



36, 8.095, 287.534

Sweetspot

The Sweet Spot groups the original color and five complimentary colors.



36, 8.095, 57.545



51, 2.921, 58.745



34, 12.952, 337.960



26, 1.915, 58.724



77, 0.009, 296.813



27, 0.004, 296.813

Same Dimension

The Same Dimension uses a secret algorithm to generate beautiful new colors.



36, 8.095, 57.545



45, 12.524, 57.091



39, 11.451, 100.891



19, 1.909, 58.627



27, 48.310, 51.878



57, 87.630, 50.242

Inverse Universe

The Inverse Universe completely reimagines the original color for something new.



37, 7.289, 241.925



46, 10.937, 242.743



33, 11.818, 285.955



19, 1.840, 240.371



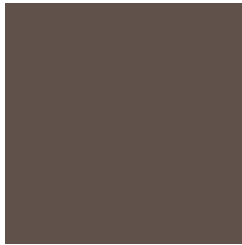
29, 29.046, 264.495



61, 52.940, 267.945

Previews

White Background



This preview shows how the CIELCh color 36, 8.095, 57.534 looks on a white background.

Color Contrast Check

Large Text (above 18pt) WCAG AA ✓ Pass

Any Text WCAG AA ✓ Pass

Large Text (above 18pt) WCAG AAA ✓ Pass

Any Text WCAG AAA ✓ Pass

Black Background



This preview shows how the CIELCh color 36, 8.095, 57.534 looks on a black background.

Color Contrast Check

Large Text (above 18pt) WCAG AA × Fail

Any Text WCAG AA × Fail

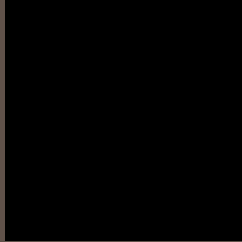
Large Text (above 18pt) WCAG AAA × Fail

Any Text WCAG AAA × Fail

If you want to check with other color combinations, try the [Color Contrast Checker](#).

CIELCh 36, 8.095, 57.534

Background



This preview shows how black text looks on a background with the CIELCh color 36, 8.095, 57.534.



This preview shows how white text looks on a background with the CIELCh color 36, 8.095, 57.534.

Color Blindness Simulation

Color vision deficiency is a very complex topic, and I could not describe the different causes any better than Wikipedia does, so if you want to learn more, you should check out their [article about color blindness](#).

Dichromacy



Original Color

36, 8.095, 57.534

Protanopia

36, 6.314, 96.891

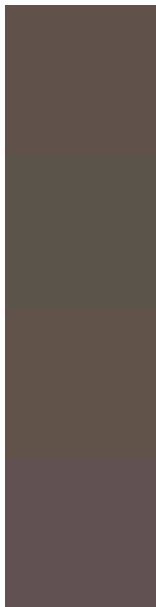
Deuteranopia

36, 8.470, 55.650



Tritanopia
36, 8.249, 353.958

Trichromacy



Original Color
36, 8.095, 57.534

Protanomaly
36, 6.391, 79.775

Deuteranomaly
36, 8.470, 55.650

Tritanomaly
36, 7.076, 15.439

Monochromacy



Original Color
36, 8.095, 57.534

Achromatopsia
36, 0.005, 296.813

Achromatomaly
36, 2.857, 59.983

CSS Examples

Text

The CSS property to change the color of the text to CIELCh 36, 8.095, 57.534 is called "color". The color property can be set on classes, ids or directly on the HTML element.

This example shows how text in the color `rgb(96, 82, 74)` looks like.

```
.text, #text, p{  
    color:rgb(96, 82, 74)  
}
```

If you want to add a text shadow in that color use the text-shadow property, you can generate a text shadow directly with our [CSS Text Shadow Generator](#).

Here you see how black text with a 4 pixel rgb(96, 82, 74) colored shadow looks like.

```
.shadow{ text-shadow: 4px 4px 2px rgb(96, 82, 74) }
```

Border

The CSS property to change the border of an element to CIELCh 36, 8.095, 57.534 is called "border". The border property can be set on classes, ids or directly on the HTML element.

This example shows the color as border, it can be applied via the CSS property "border" or "border-color".

```
.border, #border, table{ border:4px solid rgb(96, 82, 74) }
```

If only the border color should be changed use the property `border-color`.

```
.border{ border-color:rgb(96, 82, 74) }
```

If you want to add a box shadow in that color use:

Here you see how a box with a 4 pixel `rgb(96, 82, 74)` colored shadow looks like.

```
.boxshadow{ -moz-box-shadow:4px 4px 4px  
4px rgb(96, 82, 74); -webkit-box-  
shadow:4px 4px 4px 4px rgb(96, 82, 74);  
box-shadow:4px 4px 4px 4px rgb(96, 82, 74)  
}
```

Background

The CSS property to change the background color of an element to CIELCh 36, 8.095, 57.534 is called "background". The background property can be set on classes, ids or directly on the HTML element.

```
.background, #background, body{  
background: rgb(96, 82, 74) }
```

If only the background color should be changed can be used:

```
.background{ background-color: rgb(96, 82,  
74) }
```

This example shows the color as background, it is applied via the CSS property "background".

To optimize and compress your CSS code, you can use our [online CSS compressor and optimizer](#) based on csstidy. If you want to create a linear or radial gradient as background or border, check our [CSS Gradient Generator](#).

Hey! You found this booklet interesting? Support Converting Colors with the new Membership Option!

The pro membership hides all ads, plus gives you double the colors in the color bucket, and more awesome pro features!

[Learn more, Memberships starting at \\$2.50/m!](#)

**Follow me
on Twitter!**

@ConvertingColor