

Converting Colors

CIELCh(37, 13.449, 24.662)

Have a look what the booklet for
CIELCh(37, 13.449, 24.662) contains.

CIELCh(37, 13.137, 23.990)	3
<i>Conversions</i>	4
<i>Details</i>	6
<i>Harmonies</i>	11
<i>Previews</i>	20
<i>Color Blindness Simulation</i>	23
<i>CSS Examples</i>	26

Color

CIELCh(37, 13.137, 23.990)

Conversions

Conversions Part 1

Format	Color
Hex	6D504F
RGB	109, 80, 79
RGB Percent	43%, 31%, 31%
CMY	0.5728, 0.6865, 0.6905
CMYK	0.00, 0.27, 0.28, 0.57
HSL	2°, 16%, 37%
HSV	2°, 28%, 43%
XYZ	10.5707, 9.5379, 8.6685
YIQ	88.5570, 17.6050, 5.8370

Conversions

Conversions Part 2

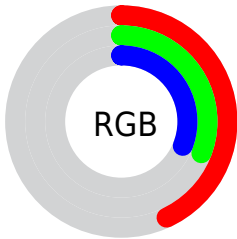
Format	Color
R _Y B	109, 80, 79
Decimal	7163983
CIE Lab	37.00, 12.00, 5.34
CIE LCh	37, 13.137, 23.990
Yxy	9.5379, 0.3673, 0.3314
Android (android.graphics.Color)	4285354063 (0xFF6D504F)
YUV	88.5570, -4.7116, 17.9285
Hunter-Lab	30.8835, 7.0504, 4.9768

Details

The CIELCh color **37, 13.137, 23.990** is a dark color, and the websafe version is hex **666666**. A complement of this color would be **43, 10.992, 201.313**, and the grayscale version is **38, 0.005, 296.813**.

A 20% lighter version of the original color is **57, 13.193, 23.224**, and **17, 12.970, 22.705** is the 20% darker color. If you saturate the color by 10%, you get **34, 18.567, 25.023**, and if you desaturate by 10%, it is **40, 8.056, 23.199**.

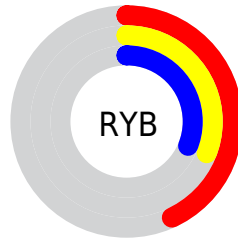
Distribution



Red (43%)

Green (31%)

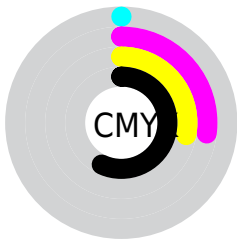
Blue (31%)



Red (43%)

Yellow (31%)

Blue (31%)

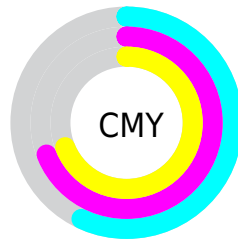


Cyan (0%)

Magenta (27%)

Yellow (28%)

Black (57%)



Cyan (57%)

Magenta (69%)

Yellow (69%)

Brightness & Saturation Gradients

These gradients show how the CIELCh color 37, 13.137, 23.990 changes by changing the brightness by 10 percent. The first figure shows a shift by +10% for each color and the second figure -10%.

Similar to the brightness gradients but the following saturation gradients show a change of the CIELCh color 37, 13.137, 23.990 by changing the saturation by 10% instead.

■ 37, 13.137, 23.990

■ 37, 13.137, 23.990

■ 100, 13.137,
23.990

■ 27, 13.137, 23.990

■ 57, 13.137, 23.990

■ 17, 13.137, 23.990

■ 67, 13.137, 23.990

■ 7, 13.137, 23.990

■ 77, 13.137, 23.990

■ 0, 13.137, 23.990

■ 87, 13.137, 23.990

■ 97, 13.137, 23.990

■ 37, 13.137, 23.990

■ 37, 13.137, 23.990

■ 34, 18.567, 25.023

■ 40, 8.056, 23.199

31, 24.316, 26.356

43, 3.333, 22.539

28, 30.310, 28.075

47, 1.049, 202.527

26, 36.424, 30.250

50, 5.115, 201.905

24, 42.473, 32.893

54, 8.894, 201.604

23, 48.028, 35.621

57, 12.418,
201.385

22, 52.026, 37.239

60, 15.716,
201.218

21, 52.968, 37.612

64, 18.814,
201.092

67, 21.736,
200.996

Harmonies

Complementary

The Complementary color scheme is a pair of colors which are on the opposite of each other on the color wheel.



37, 13.137, 23.990



43, 10.992, 201.313

Rectangle

The Rectangle color scheme consists of four colors that form a rectangle on the color wheel.



37, 13.137, 23.990



37, 13.137, 73.990



37, 13.137, 203.990



37, 13.137, 253.990

Sweetspot

The Sweet Spot groups the original color and five complimentary colors.



37, 13.136, 23.996



56, 4.430, 22.584



38, 21.507, 326.779



28, 3.141, 22.662



80, 0.010, 296.813



30, 0.005, 296.813

Same Dimension

The Same Dimension uses a secret algorithm to generate beautiful new colors.



37, 13.136, 23.996



46, 20.122, 24.620



41, 11.598, 75.617



21, 2.464, 22.631



23, 56.475, 38.331



51, 100.984, 40.247

Inverse Universe

The Inverse Universe completely reimagines the original color for something new.



43, 10.992, 201.313



56, 16.069, 201.138



39, 10.966, 262.939



22, 2.335, 202.011



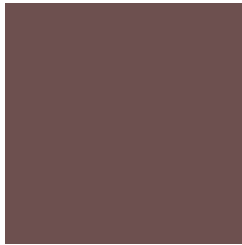
43, 27.015, 201.566



85, 46.374, 201.888

Previews

White Background



This preview shows how the CIELCh color 37, 13.137, 23.990 looks on a white background.

Color Contrast Check

Large Text (above 18pt) WCAG AA ✓ Pass

Any Text WCAG AA ✓ Pass

Large Text (above 18pt) WCAG AAA ✓ Pass

Any Text WCAG AAA ✓ Pass

Black Background



This preview shows how the CIE LCh color 37, 13.137, 23.990 looks on a black background.

Color Contrast Check

Large Text (above 18pt) WCAG AA × Fail

Any Text WCAG AA × Fail

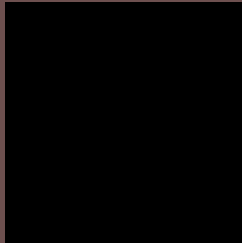
Large Text (above 18pt) WCAG AAA × Fail

Any Text WCAG AAA × Fail

If you want to check with other color combinations, try the [Color Contrast Checker](#).

CIELCh 37, 13.137, 23.990

Background



This preview shows how black text looks on a background with the CIELCh color 37, 13.137, 23.990.



This preview shows how white text looks on a background with the CIELCh color 37, 13.137, 23.990.

Color Blindness Simulation

Color vision deficiency is a very complex topic, and I could not describe the different causes any better than Wikipedia does, so if you want to learn more, you should check out their [article about color blindness](#).

Dichromacy



Original Color

37, 13.137, 23.990

Protanopia

37, 2.775, 81.773

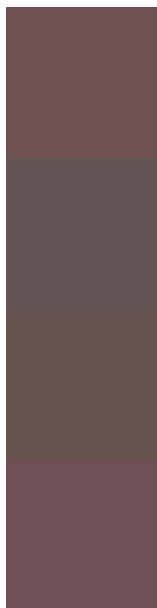
Deuteranopia

37, 7.712, 48.650



Tritanopia
37, 14.116, 6.606

Trichromacy



Original Color
37, 13.137, 23.990

Protanomaly
37, 5.867, 32.214

Deuteranomaly
37, 9.578, 39.166

Tritanomaly
37, 13.970, 11.537

Monochromacy



Original Color
37, 13.137, 23.990

Achromatopsia
37, 0.005, 296.813

Achromatomaly
37, 4.787, 20.027

CSS Examples

Text

The CSS property to change the color of the text to CIELCh 37, 13.137, 23.990 is called "color". The color property can be set on classes, ids or directly on the HTML element.

This example shows how text in the color `rgb(109, 80, 79)` looks like.

```
.text, #text, p{  
    color:rgb(109, 80, 79)  
}
```

If you want to add a text shadow in that color use the text-shadow property, you can generate a text shadow directly with our [CSS Text Shadow Generator](#).

Here you see how black text with a 4 pixel rgb(109, 80, 79) colored shadow looks like.

```
.shadow{ text-shadow: 4px 4px 2px rgb(109, 80, 79) }
```

Border

The CSS property to change the border of an element to CIELCh 37, 13.137, 23.990 is called "border". The border property can be set on classes, ids or directly on the HTML element.

This example shows the color as border, it can be applied via the CSS property "border" or "border-color".

```
.border, #border, table{ border:4px solid rgb(109, 80, 79) }
```

If only the border color should be changed use the property `border-color`.

```
.border{ border-color:rgb(109, 80, 79) }
```

If you want to add a box shadow in that color use:

Here you see how a box with a 4 pixel `rgb(109, 80, 79)` colored shadow looks like.

```
.boxshadow{ -moz-box-shadow:4px 4px 4px  
4px rgb(109, 80, 79); -webkit-box-  
shadow:4px 4px 4px 4px rgb(109, 80, 79);  
box-shadow:4px 4px 4px 4px rgb(109, 80,  
79) }
```

Background

The CSS property to change the background color of an element to CIELCh 37, 13.137, 23.990 is called "background". The background property can be set on classes, ids or directly on the HTML element.

```
.background, #background, body{  
background: rgb(109, 80, 79) }
```

If only the background color should be changed can be used:

```
.background{ background-color: rgb(109, 80,  
79) }
```

This example shows the color as background, it is applied via the CSS property "background".

To optimize and compress your CSS code, you can use our [online CSS compressor and optimizer](#) based on csstidy. If you want to create a linear or radial gradient as background or border, check our [CSS Gradient Generator](#).

Hey! You found this booklet interesting? Support Converting Colors with the new Membership Option!

The pro membership hides all ads, plus gives you double the colors in the color bucket, and more awesome pro features!

[Learn more, Memberships starting at \\$2.50/m!](#)

**Follow me
on Twitter!**

@ConvertingColor