

Converting Colors

CIELCh(37, 9.759, 12.373)

Have a look what the booklet for
CIELCh(37, 9.759, 12.373) contains.

CIELCh(37, 9.777, 13.671)	3
<i>Conversions</i>	4
<i>Details</i>	6
<i>Harmonies</i>	11
<i>Previews</i>	20
<i>Color Blindness Simulation</i>	23
<i>CSS Examples</i>	26

Color

CIELCh(37, 9.777, 13.671)

Conversions

Conversions Part 1

Format	Color
Hex	685254
RGB	104, 82, 84
RGB Percent	41%, 32%, 33%
CMY	0.5936, 0.6798, 0.6720
CMYK	0.00, 0.21, 0.19, 0.59
HSL	355°, 12%, 36%
HSV	355°, 21%, 41%
XYZ	10.2442, 9.5379, 9.6171
YIQ	88.8060, 12.4700, 5.2860

Conversions

Conversions Part 2

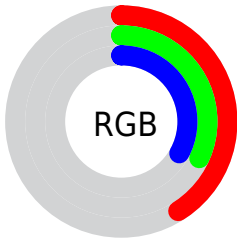
Format	Color
RYB	104, 82, 84
Decimal	6836820
CIELab	37.00, 9.50, 2.31
CIELCh	37, 9.777, 13.671
Yxy	9.5379, 0.3485, 0.3244
Android (android.graphics.Color)	4285026900 (0xFF685254)
YUV	88.8060, -2.3694, 13.3251
Hunter-Lab	30.8835, 5.1628, 3.1557

Details

The CIELCh color **37, 9.777, 13.671** is a dark color, and the websafe version is hex **666666**. A complement of this color would be **42, 8.775, 190.423**, and the grayscale version is **38, 0.005, 296.813**.

A 20% lighter version of the original color is **57, 9.766, 13.761**, and **17, 9.646, 13.682** is the 20% darker color. If you saturate the color by 10%, you get **34, 14.814, 14.844**, and if you desaturate by 10%, it is **40, 5.009, 12.699**.

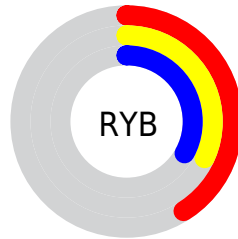
Distribution



Red (41%)

Green (32%)

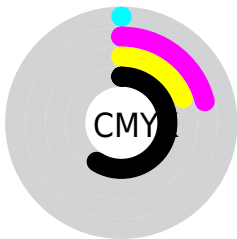
Blue (33%)



Red (41%)

Yellow (32%)

Blue (33%)

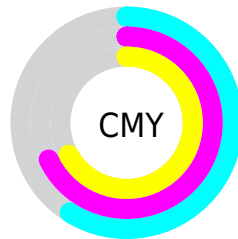


Cyan (0%)

Magenta (21%)

Yellow (19%)

Black (59%)



Cyan (59%)

Magenta (68%)

Yellow (67%)

Brightness & Saturation Gradients

These gradients show how the CIELCh color 37, 9.777, 13.671 changes by changing the brightness by 10 percent. The first figure shows a shift by +10% for each color and the second figure -10%.

Similar to the brightness gradients but the following saturation gradients show a change of the CIELCh color 37, 9.777, 13.671 by changing the saturation by 10% instead.

■ 37, 9.777, 13.671 ■ 37, 9.777, 13.671

■ 100, 9.777, 13.671 ■ 27, 9.777, 13.671

■ 57, 9.777, 13.671 ■ 17, 9.777, 13.671

■ 67, 9.777, 13.671 ■ 7, 9.777, 13.671

■ 77, 9.777, 13.671 ■ 0, 9.777, 13.671

■ 87, 9.777, 13.671

■ 97, 9.777, 13.671

■ 37, 9.777, 13.671 ■ 37, 9.777, 13.671

■ 34, 14.814, 14.844 ■ 40, 5.009, 12.699

■ 31, 20.084, 16.279 ■ 43, 0.525, 11.346

■ 28, 25.508, 18.072

■ 47, 3.682, 191.409

■ 26, 30.966, 20.326

■ 50, 7.628, 190.797

■ 24, 36.302, 23.148

■ 53, 11.335,
190.294

■ 22, 41.353, 26.603

■ 57, 14.826,
189.860

■ 21, 45.936, 30.552

■ 20, 49.282, 32.493

■ 60, 18.124,
189.479

■ 63, 21.249,
189.140

■ 67, 24.221,
188.837

Harmonies

Complementary

The Complementary color scheme is a pair of colors which are on the opposite of each other on the color wheel.



37, 9.777, 13.671



42, 8.775, 190.423

Rectangle

The Rectangle color scheme consists of four colors that form a rectangle on the color wheel.



37, 9.777, 13.671



37, 9.777, 63.671



37, 9.777, 193.671



37, 9.777, 243.671

Sweetspot

The Sweet Spot groups the original color and five complimentary colors.



37, 9.776, 13.677



54, 3.282, 12.230



37, 15.805, 322.673



28, 2.197, 12.272



79, 0.010, 296.813



29, 0.005, 296.813

Same Dimension

The Same Dimension uses a secret algorithm to generate beautiful new colors.



37, 9.776, 13.677



46, 14.525, 14.174



39, 7.977, 61.852



19, 2.458, 12.488



22, 53.654, 33.669



51, 96.735, 37.013

Inverse Universe

The Inverse Universe completely reimagines the original color for something new.



37, 9.776, 13.677



46, 14.525, 14.174



39, 7.321, 246.395



19, 2.458, 12.488



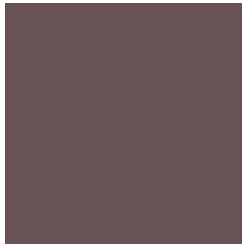
22, 53.654, 33.669



51, 96.735, 37.013

Previews

White Background



This preview shows how the CIELCh color 37, 9.777, 13.671 looks on a white background.

Color Contrast Check

Large Text (above 18pt) WCAG AA ✓ Pass

Any Text WCAG AA ✓ Pass

Large Text (above 18pt) WCAG AAA ✓ Pass

Any Text WCAG AAA ✓ Pass

Black Background



This preview shows how the CIELCh color 37, 9.777, 13.671 looks on a black background.

Color Contrast Check

Large Text (above 18pt) WCAG AA × Fail

Any Text WCAG AA × Fail

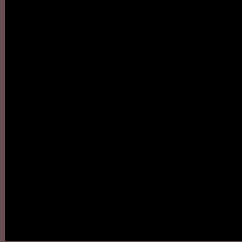
Large Text (above 18pt) WCAG AAA × Fail

Any Text WCAG AAA × Fail

If you want to check with other color combinations, try the [Color Contrast Checker](#).

CIELCh 37, 9.777, 13.671

Background



This preview shows how black text looks on a background with the CIELCh color 37, 9.777, 13.671.



This preview shows how white text looks on a background with the CIELCh color 37, 9.777, 13.671.

Color Blindness Simulation

Color vision deficiency is a very complex topic, and I could not describe the different causes any better than Wikipedia does, so if you want to learn more, you should check out their [article about color blindness](#).

Dichromacy



Original Color

37, 9.777, 13.671

Protanopia

37, 0.853, 19.170

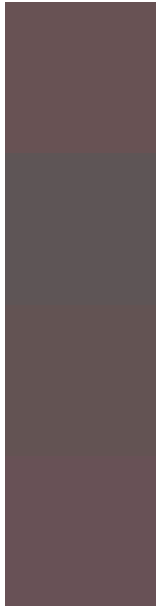
Deuteranopia

37, 5.745, 26.290



Tritanopia
37, 10.659, 0.860

Trichromacy



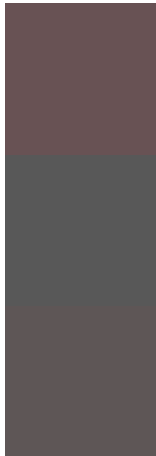
Original Color
37, 9.777, 13.671

Protanomaly
37, 3.939, 10.924

Deuteranomaly
37, 7.047, 20.391

Tritanomaly
37, 10.502, 4.054

Monochromacy



Original Color
37, 9.777, 13.671

Achromatopsia
37, 0.005, 296.813

Achromatomaly
37, 3.456, 19.807

CSS Examples

Text

The CSS property to change the color of the text to CIELCh 37, 9.777, 13.671 is called "color". The color property can be set on classes, ids or directly on the HTML element.

This example shows how text in the color `rgb(104, 82, 84)` looks like.

```
.text, #text, p{  
    color:rgb(104, 82, 84)  
}
```

If you want to add a text shadow in that color use the text-shadow property, you can generate a text shadow directly with our [CSS Text Shadow Generator](#).

Here you see how black text with a 4 pixel rgb(104, 82, 84) colored shadow looks like.

```
.shadow{ text-shadow: 4px 4px 2px rgb(104, 82, 84) }
```

Border

The CSS property to change the border of an element to CIELCh 37, 9.777, 13.671 is called "border". The border property can be set on classes, ids or directly on the HTML element.

This example shows the color as border, it can be applied via the CSS property "border" or "border-color".

```
.border, #border, table{ border:4px solid rgb(104, 82, 84) }
```

If only the border color should be changed use the property `border-color`.

```
.border{ border-color:rgb(104, 82, 84) }
```

If you want to add a box shadow in that color use:

Here you see how a box with a 4 pixel `rgb(104, 82, 84)` colored shadow looks like.

```
.boxshadow{ -moz-box-shadow:4px 4px 4px  
4px rgb(104, 82, 84); -webkit-box-  
shadow:4px 4px 4px 4px rgb(104, 82, 84);  
box-shadow:4px 4px 4px 4px rgb(104, 82,  
84) }
```

Background

The CSS property to change the background color of an element to CIELCh 37, 9.777, 13.671 is called "background". The background property can be set on classes, ids or directly on the HTML element.

```
.background, #background, body{  
background: rgb(104, 82, 84) }
```

If only the background color should be changed can be used:

```
.background{ background-color: rgb(104, 82,  
84) }
```

This example shows the color as background, it is applied via the CSS property "background".

To optimize and compress your CSS code, you can use our [online CSS compressor and optimizer](#) based on csstidy. If you want to create a linear or radial gradient as background or border, check our [CSS Gradient Generator](#).

Hey! You found this booklet interesting? Support Converting Colors with the new Membership Option!

The pro membership hides all ads, plus gives you double the colors in the color bucket, and more awesome pro features!

[Learn more, Memberships starting at \\$2.50/m!](#)

**Follow me
on Twitter!**

@ConvertingColor