

Converting Colors

CIELCh(38, 16.708, 20.619)

Have a look what the booklet for
CIELCh(38, 16.708, 20.619) contains.

CIELCh(38, 16.694, 19.864)	3
<i>Conversions</i>	4
<i>Details</i>	6
<i>Harmonies</i>	11
<i>Previews</i>	20
<i>Color Blindness Simulation</i>	23
<i>CSS Examples</i>	26

Color

CIELCh(38, 16.694, 19.864)

Conversions

Conversions Part 1

Format	Color
Hex	755051
RGB	117, 80, 81
RGB Percent	46%, 31%, 32%
CMY	0.5416, 0.6867, 0.6828
CMYK	0.00, 0.32, 0.31, 0.54
HSL	358°, 19%, 39%
HSV	358°, 32%, 46%
XYZ	11.6626, 10.0881, 9.0963
YIQ	91.1770, 21.7310, 8.1550

Conversions

Conversions Part 2

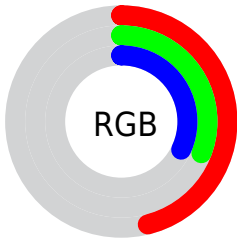
Format	Color
R_{YB}	117, 80, 81
Decimal	7688273
CIE _{Lab}	38.00, 15.70, 5.67
CIE _{LCh}	38, 16.694, 19.864
Yxy	10.0881, 0.3781, 0.3270
Android (android.graphics.Color)	4285878353 (0xFF755051)
YUV	91.1770, -5.0173, 22.6468
Hunter-Lab	31.7617, 9.9604, 5.2529

Details

The CIELCh color **38, 16.694, 19.864** is a dark color, and the websafe version is hex **996666**. A complement of this color would be **47, 13.728, 195.412**, and the grayscale version is **39, 0.005, 296.813**.

A 20% lighter version of the original color is **58, 16.494, 21.144**, and **18, 16.417, 19.024** is the 20% darker color. If you saturate the color by 10%, you get **35, 22.674, 21.254**, and if you desaturate by 10%, it is **41, 11.032, 18.774**.

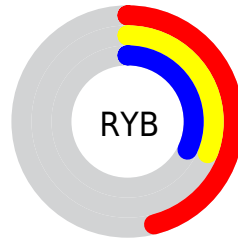
Distribution



Red (46%)

Green (31%)

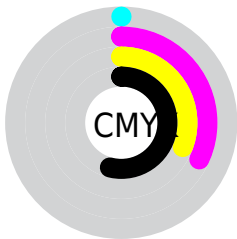
Blue (32%)



Red (46%)

Yellow (31%)

Blue (32%)

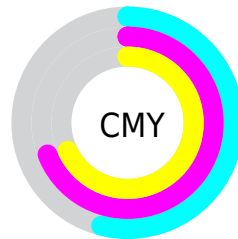


Cyan (0%)

Magenta (32%)

Yellow (31%)

Black (54%)



Cyan (54%)

Magenta (69%)

Yellow (68%)

Brightness & Saturation Gradients

These gradients show how the CIELCh color 38, 16.694, 19.864 changes by changing the brightness by 10 percent. The first figure shows a shift by +10% for each color and the second figure -10%.

Similar to the brightness gradients but the following saturation gradients show a change of the CIELCh color 38, 16.694, 19.864 by changing the saturation by 10% instead.

■ 38, 16.694, 19.864

■ 38, 16.694, 19.864

■ 100, 16.694,
19.864

■ 28, 16.694, 19.864

■ 58, 16.694, 19.864

■ 18, 16.694, 19.864

■ 68, 16.694, 19.864

■ 8, 16.694, 19.864

■ 78, 16.694, 19.864

■ 0, 16.694, 19.864

■ 88, 16.694, 19.864

■ 98, 16.694, 19.864

■ 38, 16.694, 19.864

■ 38, 16.694, 19.864

■ 35, 22.674, 21.254

■ 41, 11.032, 18.774

■ 32, 28.897, 23.024

■ 45, 5.727, 17.886

■ 29, 35.235, 25.280

■ 49, 0.781, 16.790

■ 27, 41.508, 28.103

■ 52, 3.823, 196.804

■ 25, 47.496, 31.482

■ 56, 8.109, 196.296

■ 24, 52.725, 34.918

■ 60, 12.110,
195.901

■ 23, 56.073, 36.479

■ 63, 15.855,
195.575

■ 67, 19.375,
195.300

■ 71, 22.695,
195.065

Harmonies

Complementary

The Complementary color scheme is a pair of colors which are on the opposite of each other on the color wheel.



38, 16.694, 19.864



47, 13.728, 195.412

Rectangle

The Rectangle color scheme consists of four colors that form a rectangle on the color wheel.



38, 16.694, 19.864



38, 16.694, 69.864



38, 16.694, 199.864



38, 16.694, 249.864

Sweetspot

The Sweet Spot groups the original color and five complimentary colors.



38, 16.693, 19.869



59, 5.471, 17.689



39, 26.513, 325.114



30, 3.795, 17.785



82, 0.010, 296.813



33, 0.005, 296.813

Same Dimension

The Same Dimension uses a secret algorithm to generate beautiful new colors.



38, 16.693, 19.869



47, 25.587, 20.853



43, 13.804, 68.154



23, 2.750, 17.673



24, 58.288, 36.924



52, 101.925, 39.244

Inverse Universe

The Inverse Universe completely reimagines the original color for something new.



38, 16.693, 19.869



47, 25.587, 20.853



41, 12.477, 256.340



23, 2.750, 17.673



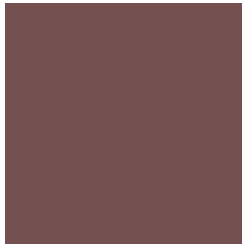
24, 58.288, 36.924



52, 101.925, 39.244

Previews

White Background



This preview shows how the CIELCh color 38, 16.694, 19.864 looks on a white background.

Color Contrast Check

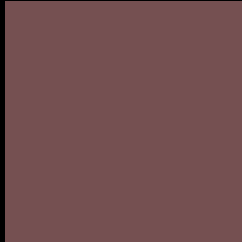
Large Text (above 18pt) WCAG AA ✓ Pass

Any Text WCAG AA ✓ Pass

Large Text (above 18pt) WCAG AAA ✓ Pass

Any Text WCAG AAA × Fail

Black Background



This preview shows how the CIELCh color 38, 16.694, 19.864 looks on a black background.

Color Contrast Check

Large Text (above 18pt) WCAG AA ✓ Pass

Any Text WCAG AA × Fail

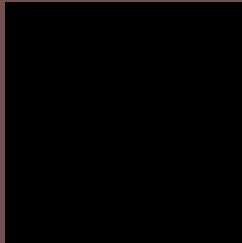
Large Text (above 18pt) WCAG AAA × Fail

Any Text WCAG AAA × Fail

If you want to check with other color combinations, try the [Color Contrast Checker](#).

CIELCh 38, 16.694, 19.864

Background



This preview shows how black text looks on a background with the CIELCh color 38, 16.694, 19.864.



This preview shows how white text looks on a background with the CIELCh color 38, 16.694, 19.864.

Color Blindness Simulation

Color vision deficiency is a very complex topic, and I could not describe the different causes any better than Wikipedia does, so if you want to learn more, you should check out their [article about color blindness](#).

Dichromacy



Original Color

38, 16.694, 19.864

Protanopia

38, 2.237, 74.596

Deuteranopia

38, 8.081, 47.155



Tritanopia
38, 17.180, 9.923

Trichromacy



Original Color
38, 16.694, 19.864

Protanomaly
38, 6.722, 30.718

Deuteranomaly
38, 10.677, 33.952

Tritanomaly
38, 17.137, 11.938

Monochromacy



Original Color
38, 16.694, 19.864

Achromatopsia
39, 0.005, 296.813

Achromatomaly
38, 5.650, 20.147

CSS Examples

Text

The CSS property to change the color of the text to CIELCh 38, 16.694, 19.864 is called "color". The color property can be set on classes, ids or directly on the HTML element.

This example shows how text in the color `rgb(117, 80, 81)` looks like.

```
.text, #text, p{  
    color:rgb(117, 80, 81)  
}
```

If you want to add a text shadow in that color use the text-shadow property, you can generate a text shadow directly with our [CSS Text Shadow Generator](#).

Here you see how black text with a 4 pixel rgb(117, 80, 81) colored shadow looks like.

```
.shadow{ text-shadow: 4px 4px 2px rgb(117, 80, 81) }
```

Border

The CSS property to change the border of an element to CIELCh 38, 16.694, 19.864 is called "border". The border property can be set on classes, ids or directly on the HTML element.

This example shows the color as border, it can be applied via the CSS property "border" or "border-color".

```
.border, #border, table{ border:4px solid rgb(117, 80, 81) }
```

If only the border color should be changed use the property `border-color`.

```
.border{ border-color:rgb(117, 80, 81) }
```

If you want to add a box shadow in that color use:

Here you see how a box with a 4 pixel `rgb(117, 80, 81)` colored shadow looks like.

```
.boxshadow{ -moz-box-shadow:4px 4px 4px  
4px rgb(117, 80, 81); -webkit-box-  
shadow:4px 4px 4px 4px rgb(117, 80, 81);  
box-shadow:4px 4px 4px 4px rgb(117, 80,  
81) }
```

Background

The CSS property to change the background color of an element to CIELCh 38, 16.694, 19.864 is called "background". The background property can be set on classes, ids or directly on the HTML element.

```
.background, #background, body{  
background: rgb(117, 80, 81) }
```

If only the background color should be changed can be used:

```
.background{ background-color: rgb(117, 80,  
81) }
```

This example shows the color as background, it is applied via the CSS property "background".

To optimize and compress your CSS code, you can use our [online CSS compressor and optimizer](#) based on csstidy. If you want to create a linear or radial gradient as background or border, check our [CSS Gradient Generator](#).

Hey! You found this booklet interesting? Support Converting Colors with the new Membership Option!

The pro membership hides all ads, plus gives you double the colors in the color bucket, and more awesome pro features!

[Learn more, Memberships starting at \\$2.50/m!](#)

**Follow me
on Twitter!**

@ConvertingColor