

Converting Colors

CIELCh(38, 9.291, 10.783)

Have a look what the booklet for
CIELCh(38, 9.291, 10.783) contains.

CIELCh(38, 9.350, 9.492)	3
<i>Conversions</i>	4
<i>Details</i>	6
<i>Harmonies</i>	11
<i>Previews</i>	20
<i>Color Blindness Simulation</i>	23
<i>CSS Examples</i>	26

Color

CIELCh(38, 9.350, 9.492)

Conversions

Conversions Part 1

Format	Color
Hex	695457
RGB	105, 84, 87
RGB Percent	41%, 33%, 34%
CMY	0.5873, 0.6696, 0.6579
CMYK	0.00, 0.20, 0.17, 0.59
HSL	351°, 11%, 37%
HSV	351°, 20%, 41%
XYZ	10.7738, 10.0881, 10.4474
YIQ	90.6210, 11.5530, 5.3850

Conversions

Conversions Part 2

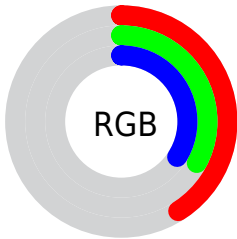
Format	Color
R_{YB}	105, 84, 87
Decimal	6902871
CIE Lab	38.00, 9.22, 1.54
CIE LCh	38, 9.350, 9.492
Yxy	10.0881, 0.3441, 0.3222
Android (android.graphics.Color)	4285092951 (0xFF695457)
YUV	90.6210, -1.7852, 12.6104
Hunter-Lab	31.7617, 4.9657, 2.7308

Details

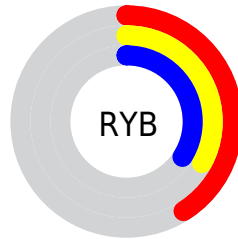
The CIELCh color $[38, 9.350, 9.492]$ is a dark color, and the websafe version is hex 666666 . A complement of this color would be $[43, 8.554, 186.166]$, and the grayscale version is $[39, 0.005, 296.813]$.

A 20% lighter version of the original color is $[58, 8.976, 9.439]$, and $[18, 9.123, 8.698]$ is the 20% darker color. If you saturate the color by 10%, you get $[35, 14.402, 10.692]$, and if you desaturate by 10%, it is $[41, 4.537, 8.475]$.

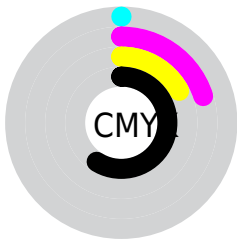
Distribution



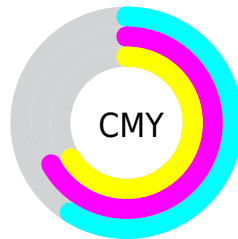
- Red (41%)
- Green (33%)
- Blue (34%)



- Red (41%)
- Yellow (33%)
- Blue (34%)



- Cyan (0%)
- Magenta (20%)
- Yellow (17%)
- Black (59%)



- Cyan (59%)
- Magenta (67%)
- Yellow (66%)

Brightness & Saturation Gradients

These gradients show how the CIELCh color 38, 9.350, 9.492 changes by changing the brightness by 10 percent. The first figure shows a shift by +10% for each color and the second figure -10%.

Similar to the brightness gradients but the following saturation gradients show a change of the CIELCh color 38, 9.350, 9.492 by changing the saturation by 10% instead.

■ 38, 9.350, 9.492

■ 38, 9.350, 9.492

■ 100, 9.350, 9.492

■ 28, 9.350, 9.492

■ 58, 9.350, 9.492

■ 18, 9.350, 9.492

■ 68, 9.350, 9.492

■ 8, 9.350, 9.492

■ 78, 9.350, 9.492

■ 0, 9.350, 9.492

■ 88, 9.350, 9.492

■ 98, 9.350, 9.492

■ 38, 9.350, 9.492

■ 38, 9.350, 9.492

■ 35, 14.402, 10.692

■ 41, 4.537, 8.475

■ 32, 19.650, 12.137

■ 45, 0.017, 207.763

■ 29, 25.010, 13.918

■ 48, 4.311, 187.072

■ 27, 30.351, 16.140

■ 51, 8.361, 186.411

■ 24, 35.511, 18.922

■ 55, 12.183,
185.849

■ 23, 40.321, 22.367

■ 58, 15.798,
185.354

■ 21, 44.657, 26.494

■ 20, 48.749, 30.145

■ 61, 19.226,
184.911

■ 20, 48.765, 30.154

■ 65, 22.487,
184.512

■ 68, 25.599,
184.150

Harmonies

Complementary

The Complementary color scheme is a pair of colors which are on the opposite of each other on the color wheel.



38, 9.350, 9.492



43, 8.554, 186.166

Rectangle

The Rectangle color scheme consists of four colors that form a rectangle on the color wheel.



38, 9.350, 9.492



38, 9.350, 59.492



38, 9.350, 189.492



38, 9.350, 239.492

Sweetspot

The Sweet Spot groups the original color and five complimentary colors.



38, 9.349, 9.498



55, 3.372, 8.098



38, 14.851, 321.144



28, 2.222, 8.141



79, 0.010, 296.813



29, 0.005, 296.813

Same Dimension

The Same Dimension uses a secret algorithm to generate beautiful new colors.



38, 9.349, 9.498



48, 14.193, 10.036



40, 7.536, 56.157



21, 2.589, 8.379



23, 53.167, 31.141



51, 94.509, 34.324

Inverse Universe

The Inverse Universe completely reimagines the original color for something new.



38, 9.349, 9.498



48, 14.193, 10.036



41, 6.854, 239.790



21, 2.589, 8.379



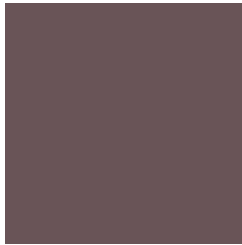
23, 53.167, 31.141



51, 94.509, 34.324

Previews

White Background



This preview shows how the CIELCh color 38, 9.350, 9.492 looks on a white background.

Color Contrast Check

Large Text (above 18pt) WCAG AA ✓ Pass

Any Text WCAG AA ✓ Pass

Large Text (above 18pt) WCAG AAA ✓ Pass

Any Text WCAG AAA × Fail

Black Background



This preview shows how the CIE LCh color 38, 9.350, 9.492 looks on a black background.

Color Contrast Check

Large Text (above 18pt) WCAG AA ✓ Pass

Any Text WCAG AA × Fail

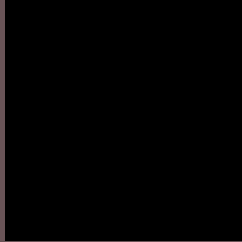
Large Text (above 18pt) WCAG AAA × Fail

Any Text WCAG AAA × Fail

If you want to check with other color combinations, try the [Color Contrast Checker](#).

CIELCh 38, 9.350, 9.492

Background



This preview shows how black text looks on a background with the CIELCh color 38, 9.350, 9.492.

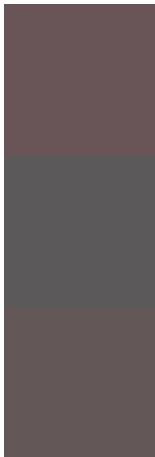


This preview shows how white text looks on a background with the CIELCh color 38, 9.350, 9.492.

Color Blindness Simulation

Color vision deficiency is a very complex topic, and I could not describe the different causes any better than Wikipedia does, so if you want to learn more, you should check out their [article about color blindness](#).

Dichromacy



Original Color

38, 9.350, 9.492

Protanopia

38, 1.055, 343.598

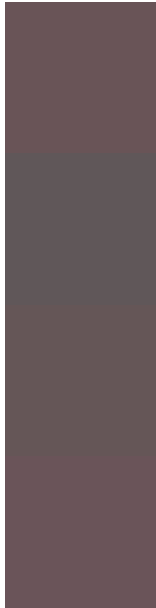
Deuteranopia

38, 5.207, 20.080



Tritanopia
38, 10.183, 359.857

Trichromacy



Original Color

38, 9.350, 9.492

Protanomaly

38, 4.054, 2.320

Deuteranomaly

38, 6.555, 14.964

Tritanomaly

38, 10.015, 3.169

Monochromacy



Original Color

38, 9.350, 9.492

Achromatopsia

39, 0.005, 296.813

Achromatomaly

38, 3.055, 8.194

CSS Examples

Text

The CSS property to change the color of the text to CIELCh 38, 9.350, 9.492 is called "color". The color property can be set on classes, ids or directly on the HTML element.

This example shows how text in the color `rgb(105, 84, 87)` looks like.

```
.text, #text, p{  
    color:rgb(105, 84, 87)  
}
```

If you want to add a text shadow in that color use the text-shadow property, you can generate a text shadow directly with our [CSS Text Shadow Generator](#).

Here you see how black text with a 4 pixel rgb(105, 84, 87) colored shadow looks like.

```
.shadow{ text-shadow: 4px 4px 2px rgb(105, 84, 87) }
```

Border

The CSS property to change the border of an element to CIELCh 38, 9.350, 9.492 is called "border". The border property can be set on classes, ids or directly on the HTML element.

This example shows the color as border, it can be applied via the CSS property "border" or "border-color".

```
.border, #border, table{ border:4px solid rgb(105, 84, 87) }
```

If only the border color should be changed use the property border-color.

```
.border{ border-color:rgb(105, 84, 87) }
```

If you want to add a box shadow in that color use:

Here you see how a box with a 4 pixel rgb(105, 84, 87) colored shadow looks like.

```
.boxshadow{ -moz-box-shadow:4px 4px 4px  
4px rgb(105, 84, 87); -webkit-box-  
shadow:4px 4px 4px 4px rgb(105, 84, 87);  
box-shadow:4px 4px 4px 4px rgb(105, 84,  
87) }
```

Background

The CSS property to change the background color of an element to CIELCh 38, 9.350, 9.492 is called "background". The background property can be set on classes, ids or directly on the HTML element.

```
.background, #background, body{  
background: rgb(105, 84, 87) }
```

If only the background color should be changed can be used:

```
.background{ background-color: rgb(105, 84,  
87) }
```

This example shows the color as background, it is applied via the CSS property "background".

To optimize and compress your CSS code, you can use our [online CSS compressor and optimizer](#) based on csstidy. If you want to create a linear or radial gradient as background or border, check our [CSS Gradient Generator](#).

Hey! You found this booklet interesting? Support Converting Colors with the new Membership Option!

The pro membership hides all ads, plus gives you double the colors in the color bucket, and more awesome pro features!

[Learn more, Memberships starting at \\$2.50/m!](#)

**Follow me
on Twitter!**

@ConvertingColor