

Converting Colors

CIELCh(39, 11.365, 66.111)

Have a look what the booklet for
CIELCh(39, 11.365, 66.111) contains.

CIELCh(39, 11.627, 66.827)	3
<i>Conversions</i>	4
<i>Details</i>	6
<i>Harmonies</i>	11
<i>Previews</i>	20
<i>Color Blindness Simulation</i>	23
<i>CSS Examples</i>	26

Color

CIELCh(39, 11.627, 66.827)

Conversions

Conversions Part 1

Format	Color
Hex	6A594B
RGB	106, 89, 75
RGB Percent	42%, 35%, 29%
CMY	0.5853, 0.6519, 0.7068
CMYK	0.00, 0.16, 0.29, 0.59
HSL	27°, 17%, 35%
HSV	27°, 29%, 41%
XYZ	10.7290, 10.6589, 8.1069
YIQ	92.4870, 14.6260, -0.7500

Conversions

Conversions Part 2

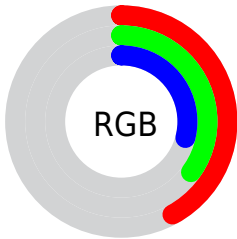
Format	Color
R_{YB}	106, 101, 75
Decimal	6969675
CIE _{Lab}	39.00, 4.58, 10.69
CIE _{LCh}	39, 11.627, 66.827
Yxy	10.6589, 0.3638, 0.3614
Android (android.graphics.Color)	4285159755 (0xFF6A594B)
YUV	92.4870, -8.6211, 11.8509
Hunter-Lab	32.6480, 1.5256, 8.1311

Details

The CIELCh color **39, 11.627, 66.827** is a dark color, and the websafe version is hex **666666**. A complement of this color would be **38, 10.534, 254.075**, and the grayscale version is **39, 0.006, 296.813**.

A 20% lighter version of the original color is **59, 11.609, 66.400**, and **19, 11.710, 68.533** is the 20% darker color. If you saturate the color by 10%, you get **37, 16.015, 65.767**, and if you desaturate by 10%, it is **41, 7.460, 67.904**.

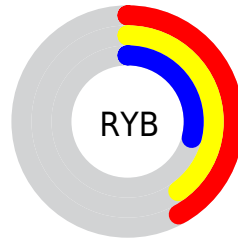
Distribution



Red (42%)

Green (35%)

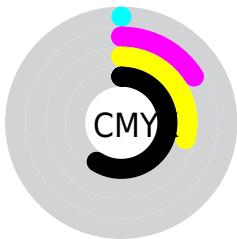
Blue (29%)



Red (42%)

Yellow (40%)

Blue (29%)

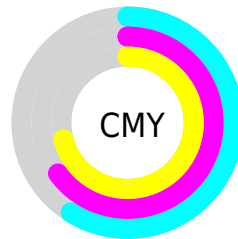


Cyan (0%)

Magenta (16%)

Yellow (29%)

Black (59%)



Cyan (59%)

Magenta (65%)

Yellow (71%)

Brightness & Saturation Gradients

These gradients show how the CIELCh color 39, 11.627, 66.827 changes by changing the brightness by 10 percent. The first figure shows a shift by +10% for each color and the second figure -10%.

Similar to the brightness gradients but the following saturation gradients show a change of the CIELCh color 39, 11.627, 66.827 by changing the saturation by 10% instead.

■ 39, 11.627, 66.827

■ 39, 11.627, 66.827

■ 100, 11.627,
66.827

■ 29, 11.627, 66.827

■ 59, 11.627, 66.827

■ 19, 11.627, 66.827

■ 69, 11.627, 66.827

■ 9, 11.627, 66.827

■ 79, 11.627, 66.827

■ 0, 11.627, 66.827

■ 89, 11.627, 66.827

■ 99, 11.627, 66.827

■ 39, 11.627, 66.827

■ 39, 11.627, 66.827

■ 37, 16.015, 65.767

■ 41, 7.460, 67.904

■ 35, 20.623, 64.708

■ 43, 3.502, 68.947

■ 34, 25.429, 63.652

■ 45, 0.263, 251.064

■ 32, 30.366, 62.574

■ 47, 3.853, 251.217

■ 30, 35.281, 61.403

■ 49, 7.287, 252.221

■ 29, 39.873, 59.984

■ 51, 10.581,
253.218

■ 27, 44.115, 58.524

■ 53, 13.753,
254.188

■ 27, 44.412, 58.437

■ 55, 16.815,
255.127

■ 57, 19.780,
256.031

Harmonies

Complementary

The Complementary color scheme is a pair of colors which are on the opposite of each other on the color wheel.



39, 11.627, 66.827



38, 10.534, 254.075

Rectangle

The Rectangle color scheme consists of four colors that form a rectangle on the color wheel.



39, 11.627, 66.827



39, 11.627, 116.827



39, 11.627, 246.827



39, 11.627, 296.827

Sweetspot

The Sweet Spot groups the original color and five complimentary colors.



39, 11.627, 66.835



55, 4.210, 68.952



36, 16.813, 343.433



28, 2.912, 68.841



79, 0.010, 296.813



29, 0.005, 296.813

Same Dimension

The Same Dimension uses a secret algorithm to generate beautiful new colors.



39, 11.627, 66.835



49, 17.560, 66.121



44, 17.463, 105.314



21, 2.137, 68.979



30, 48.413, 58.300



62, 84.882, 56.076

Inverse Universe

The Inverse Universe completely reimagines the original color for something new.



38, 10.534, 254.075



48, 15.505, 255.313



33, 18.529, 291.537



21, 2.083, 251.123



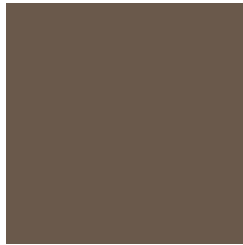
27, 35.587, 276.802



56, 64.529, 279.819

Previews

White Background



This preview shows how the CIELCh color 39, 11.627, 66.827 looks on a white background.

Color Contrast Check

Large Text (above 18pt) WCAG AA ✓ Pass

Any Text WCAG AA ✓ Pass

Large Text (above 18pt) WCAG AAA ✓ Pass

Any Text WCAG AAA × Fail

Black Background



This preview shows how the CIELCh color 39, 11.627, 66.827 looks on a black background.

Color Contrast Check

Large Text (above 18pt) WCAG AA ✓ Pass

Any Text WCAG AA × Fail

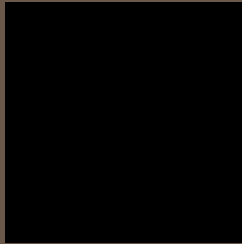
Large Text (above 18pt) WCAG AAA × Fail

Any Text WCAG AAA × Fail

If you want to check with other color combinations, try the [Color Contrast Checker](#).

CIELCh 39, 11.627, 66.827

Background



This preview shows how black text looks on a background with the CIELCh color 39, 11.627, 66.827.

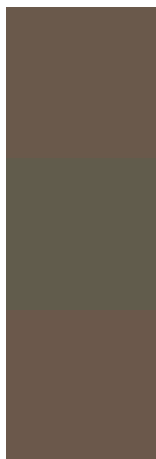


This preview shows how white text looks on a background with the CIELCh color 39, 11.627, 66.827.

Color Blindness Simulation

Color vision deficiency is a very complex topic, and I could not describe the different causes any better than Wikipedia does, so if you want to learn more, you should check out their [article about color blindness](#).

Dichromacy



Original Color

39, 11.627, 66.827

Protanopia

39, 9.990, 95.614

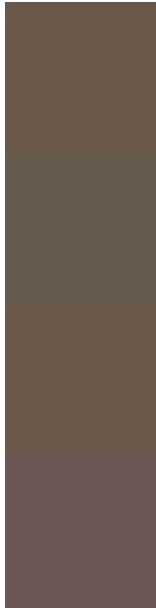
Deuteranopia

39, 11.871, 61.748



Tritanopia
39, 10.346, 356.631

Trichromacy



Original Color
39, 11.627, 66.827

Protanomaly
39, 10.017, 84.746

Deuteranomaly
39, 11.871, 61.748

Tritanomaly
39, 8.836, 24.531

Monochromacy



Original Color
39, 11.627, 66.827

Achromatopsia
39, 0.006, 296.813

Achromatomaly
39, 4.003, 69.070

CSS Examples

Text

The CSS property to change the color of the text to CIELCh 39, 11.627, 66.827 is called "color". The color property can be set on classes, ids or directly on the HTML element.

This example shows how text in the color `rgb(106, 89, 75)` looks like.

```
.text, #text, p{  
    color:rgb(106, 89, 75)  
}
```

If you want to add a text shadow in that color use the text-shadow property, you can generate a text shadow directly with our [CSS Text Shadow Generator](#).

Here you see how black text with a 4 pixel rgb(106, 89, 75) colored shadow looks like.

```
.shadow{ text-shadow: 4px 4px 2px rgb(106, 89, 75) }
```

Border

The CSS property to change the border of an element to CIELCh 39, 11.627, 66.827 is called "border". The border property can be set on classes, ids or directly on the HTML element.

This example shows the color as border, it can be applied via the CSS property "border" or "border-color".

```
.border, #border, table{ border:4px solid rgb(106, 89, 75) }
```

If only the border color should be changed use the property border-color.

```
.border{ border-color:rgb(106, 89, 75) }
```

If you want to add a box shadow in that color use:

Here you see how a box with a 4 pixel rgb(106, 89, 75) colored shadow looks like.

```
.boxshadow{ -moz-box-shadow:4px 4px 4px  
4px rgb(106, 89, 75); -webkit-box-  
shadow:4px 4px 4px 4px rgb(106, 89, 75);  
box-shadow:4px 4px 4px 4px rgb(106, 89,  
75) }
```

Background

The CSS property to change the background color of an element to CIELCh 39, 11.627, 66.827 is called "background". The background property can be set on classes, ids or directly on the HTML element.

```
.background, #background, body{  
background: rgb(106, 89, 75) }
```

If only the background color should be changed can be used:

```
.background{ background-color: rgb(106, 89,  
75) }
```

This example shows the color as background, it is applied via the CSS property "background".

To optimize and compress your CSS code, you can use our [online CSS compressor and optimizer](#) based on csstidy. If you want to create a linear or radial gradient as background or border, check our [CSS Gradient Generator](#).

Hey! You found this booklet interesting? Support Converting Colors with the new Membership Option!

The pro membership hides all ads, plus gives you double the colors in the color bucket, and more awesome pro features!

[Learn more, Memberships starting at \\$2.50/m!](#)

**Follow me
on Twitter!**

@ConvertingColor