

Converting Colors

CIELCh(39, 6.809, 52.858)

Have a look what the booklet for
CIELCh(39, 6.809, 52.858) contains.

CIELCh(39, 6.837, 52.255)	3
<i>Conversions</i>	4
<i>Details</i>	6
<i>Harmonies</i>	11
<i>Previews</i>	20
<i>Color Blindness Simulation</i>	23
<i>CSS Examples</i>	26

Color

CIELCh(39, 6.837, 52.255)

Conversions

Conversions Part 1

Format	Color
Hex	665953
RGB	102, 89, 83
RGB Percent	40%, 35%, 33%
CMY	0.5989, 0.6499, 0.6735
CMYK	0.00, 0.13, 0.19, 0.60
HSL	19°, 10%, 36%
HSV	19°, 19%, 40%
XYZ	10.6771, 10.6589, 9.7318
YIQ	92.2030, 9.6740, 0.8900

Conversions

Conversions Part 2

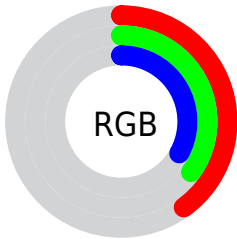
Format	Color
R _Y B	102, 92, 83
Decimal	6707539
CIE Lab	39.00, 4.19, 5.41
CIE LCh	39, 6.837, 52.255
Yxy	10.6589, 0.3437, 0.3431
Android (android.graphics.Color)	4284897619 (0xFF665953)
YUV	92.2030, -4.5371, 8.5920
Hunter-Lab	32.6480, 1.2419, 5.1803

Details

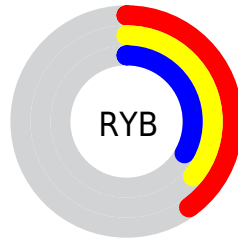
The CIELCh color **39, 6.837, 52.255** is a dark color, and the websafe version is hex **666666**. A complement of this color would be **40, 6.215, 235.149**, and the grayscale version is **39, 0.006, 296.813**.

A 20% lighter version of the original color is **59, 6.911, 54.595**, and **19, 6.987, 55.917** is the 20% darker color. If you saturate the color by 10%, you get **37, 10.894, 51.700**, and if you desaturate by 10%, it is **41, 3.051, 52.851**.

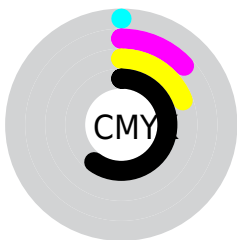
Distribution



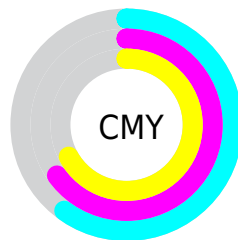
- Red (40%)
- Green (35%)
- Blue (33%)



- Red (40%)
- Yellow (36%)
- Blue (33%)



- Cyan (0%)
- Magenta (13%)
- Yellow (19%)
- Black (60%)



- Cyan (60%)
- Magenta (65%)
- Yellow (67%)

Brightness & Saturation Gradients

These gradients show how the CIELCh color 39, 6.837, 52.255 changes by changing the brightness by 10 percent. The first figure shows a shift by +10% for each color and the second figure -10%.

Similar to the brightness gradients but the following saturation gradients show a change of the CIELCh color 39, 6.837, 52.255 by changing the saturation by 10% instead.

 39, 6.837, 52.255  39, 6.837, 52.255

 100, 6.837, 52.255  29, 6.837, 52.255

 59, 6.837, 52.255  19, 6.837, 52.255

 69, 6.837, 52.255  9, 6.837, 52.255

 79, 6.837, 52.255  0, 6.837, 52.255

 89, 6.837, 52.255

 99, 6.837, 52.255

 39, 6.837, 52.255  39, 6.837, 52.255

 37, 10.894, 51.700  41, 3.051, 52.851

 35, 15.241, 51.196  44, 0.488, 234.254

■ 32, 19.890, 50.775

■ 46, 3.805, 234.412

■ 30, 24.832, 50.448

■ 48, 6.924, 235.092

■ 28, 30.024, 50.205

■ 51, 9.868, 235.799

■ 27, 35.348, 49.992

■ 53, 12.657,
236.510

■ 25, 40.498, 49.599

■ 56, 15.310,
237.214

■ 23, 44.785, 48.612

■ 23, 45.374, 48.517

■ 58, 17.843,
237.906

■ 60, 20.270,
238.583

Harmonies

Complementary

The Complementary color scheme is a pair of colors which are on the opposite of each other on the color wheel.



39, 6.837, 52.255



40, 6.215, 235.149

Rectangle

The Rectangle color scheme consists of four colors that form a rectangle on the color wheel.



39, 6.837, 52.255



39, 6.837, 102.255



39, 6.837, 232.255



39, 6.837, 282.255

Sweetspot

The Sweet Spot groups the original color and five complimentary colors.



39, 6.837, 52.268



54, 2.616, 52.972



38, 11.442, 335.485



27, 1.723, 52.954



78, 0.009, 296.813



28, 0.004, 296.813

Same Dimension

The Same Dimension uses a secret algorithm to generate beautiful new colors.



39, 6.837, 52.268



49, 10.159, 52.033



42, 9.299, 98.396



20, 1.992, 52.833



26, 50.294, 48.846



56, 90.740, 47.632

Inverse Universe

The Inverse Universe completely reimagines the original color for something new.



40, 6.215, 235.149



51, 9.024, 235.574



37, 9.479, 282.631



20, 1.909, 234.303



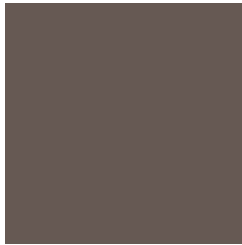
31, 27.284, 256.645



65, 48.790, 259.977

Previews

White Background



This preview shows how the CIELCh color 39, 6.837, 52.255 looks on a white background.

Color Contrast Check

Large Text (above 18pt) WCAG AA ✓ Pass

Any Text WCAG AA ✓ Pass

Large Text (above 18pt) WCAG AAA ✓ Pass

Any Text WCAG AAA × Fail

Black Background



This preview shows how the CIELCh color 39, 6.837, 52.255 looks on a black background.

Color Contrast Check

Large Text (above 18pt) WCAG AA ✓ Pass

Any Text WCAG AA × Fail

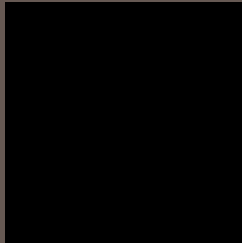
Large Text (above 18pt) WCAG AAA × Fail

Any Text WCAG AAA × Fail

If you want to check with other color combinations, try the [Color Contrast Checker](#).

CIELCh 39, 6.837, 52.255

Background



This preview shows how black text looks on a background with the CIELCh color 39, 6.837, 52.255.



This preview shows how white text looks on a background with the CIELCh color 39, 6.837, 52.255.

Color Blindness Simulation

Color vision deficiency is a very complex topic, and I could not describe the different causes any better than Wikipedia does, so if you want to learn more, you should check out their [article about color blindness](#).

Dichromacy



Original Color


39, 6.837, 52.255

Protanopia

39, 5.040, 94.361

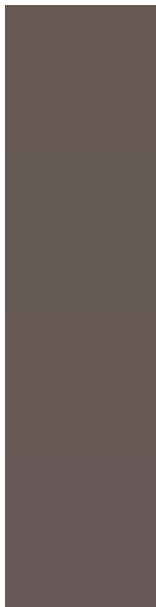
Deuteranopia

39, 7.620, 48.689



Tritanopia
39, 7.739, 352.317

Trichromacy



Original Color
39, 6.837, 52.255

Protanomaly
39, 5.253, 73.752

Deuteranomaly
39, 7.224, 50.374

Tritanomaly
39, 6.588, 9.662

Monochromacy



Original Color
39, 6.837, 52.255

Achromatopsia
39, 0.006, 296.813

Achromatomaly
39, 2.457, 49.267

CSS Examples

Text

The CSS property to change the color of the text to CIELCh 39, 6.837, 52.255 is called "color". The color property can be set on classes, ids or directly on the HTML element.

This example shows how text in the color `rgb(102, 89, 83)` looks like.

```
.text, #text, p{  
    color:rgb(102, 89, 83)  
}
```

If you want to add a text shadow in that color use the text-shadow property, you can generate a text shadow directly with our [CSS Text Shadow Generator](#).

Here you see how black text with a 4 pixel rgb(102, 89, 83) colored shadow looks like.

```
.shadow{ text-shadow: 4px 4px 2px rgb(102, 89, 83) }
```

Border

The CSS property to change the border of an element to CIELCh 39, 6.837, 52.255 is called "border". The border property can be set on classes, ids or directly on the HTML element.

This example shows the color as border, it can be applied via the CSS property "border" or "border-color".

```
.border, #border, table{ border:4px solid rgb(102, 89, 83) }
```

If only the border color should be changed use the property `border-color`.

```
.border{ border-color:rgb(102, 89, 83) }
```

If you want to add a box shadow in that color use:

Here you see how a box with a 4 pixel `rgb(102, 89, 83)` colored shadow looks like.

```
.boxshadow{ -moz-box-shadow:4px 4px 4px  
4px rgb(102, 89, 83); -webkit-box-  
shadow:4px 4px 4px 4px rgb(102, 89, 83);  
box-shadow:4px 4px 4px 4px rgb(102, 89,  
83) }
```

Background

The CSS property to change the background color of an element to CIELCh 39, 6.837, 52.255 is called "background". The background property can be set on classes, ids or directly on the HTML element.

```
.background, #background, body{  
background: rgb(102, 89, 83) }
```

If only the background color should be changed can be used:

```
.background{ background-color: rgb(102, 89,  
83) }
```

This example shows the color as background, it is applied via the CSS property "background".

To optimize and compress your CSS code, you can use our [online CSS compressor and optimizer](#) based on csstidy. If you want to create a linear or radial gradient as background or border, check our [CSS Gradient Generator](#).

Hey! You found this booklet interesting? Support Converting Colors with the new Membership Option!

The pro membership hides all ads, plus gives you double the colors in the color bucket, and more awesome pro features!

[Learn more, Memberships starting at \\$2.50/m!](#)

**Follow me
on Twitter!**

@ConvertingColor