

Converting Colors

CIELCh(43, 19.534, 54.463)

Have a look what the booklet for
CIELCh(43, 19.534, 54.463) contains.

CIELCh(43, 19.390, 54.265)	3
<i>Conversions</i>	4
<i>Details</i>	6
<i>Harmonies</i>	11
<i>Previews</i>	20
<i>Color Blindness Simulation</i>	23
<i>CSS Examples</i>	26

Color

CIELCh(43, 19.390, 54.265)

Conversions

Conversions Part 1

Format	Color
Hex	805E4C
RGB	128, 94, 76
RGB Percent	50%, 37%, 30%
CMY	0.4974, 0.6308, 0.7014
CMYK	0.00, 0.27, 0.41, 0.50
HSL	21°, 25%, 40%
HSV	21°, 41%, 50%
XYZ	14.2523, 13.1578, 8.6524
YIQ	102.1140, 26.0420, 1.6100

Conversions

Conversions Part 2

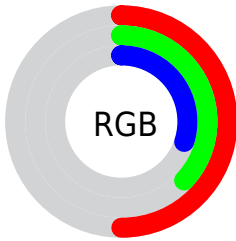
Format	Color
RYB	128, 104, 76
Decimal	8412748
CIELab	43.00, 11.32, 15.74
CIELCh	43, 19.390, 54.265
Yxy	13.1578, 0.3952, 0.3649
Android (android.graphics.Color)	4286602828 (0xFF805E4C)
YUV	102.1140, -12.8742, 22.7020
Hunter-Lab	36.2736, 6.6555, 11.2491

Details

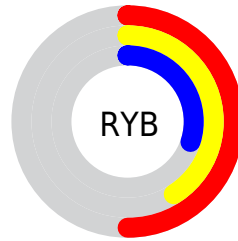
The CIELCh color **43, 19.390, 54.265** is a dark color, and the websafe version is hex **996666**. A complement of this color would be **45, 15.577, 242.487**, and the grayscale version is **43, 0.006, 296.813**.

A 20% lighter version of the original color is **63, 19.380, 53.389**, and **23, 19.226, 54.384** is the 20% darker color. If you saturate the color by 10%, you get **41, 25.023, 53.688**, and if you desaturate by 10%, it is **46, 14.108, 54.925**.

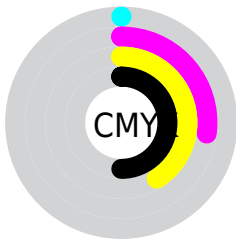
Distribution



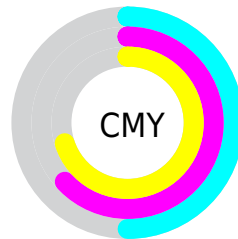
- Red (50%)
- Green (37%)
- Blue (30%)



- Red (50%)
- Yellow (41%)
- Blue (30%)



- Cyan (0%)
- Magenta (27%)
- Yellow (41%)
- Black (50%)



- Cyan (50%)
- Magenta (63%)
- Yellow (70%)

Brightness & Saturation Gradients

These gradients show how the CIELCh color 43, 19.390, 54.265 changes by changing the brightness by 10 percent. The first figure shows a shift by +10% for each color and the second figure -10%.

Similar to the brightness gradients but the following saturation gradients show a change of the CIELCh color 43, 19.390, 54.265 by changing the saturation by 10% instead.

■ 43, 19.390, 54.265

■ 43, 19.390, 54.265

■ 100, 19.390,
54.265

■ 33, 19.390, 54.265

■ 63, 19.390, 54.265

■ 23, 19.390, 54.265

■ 73, 19.390, 54.265

■ 13, 19.390, 54.265

■ 83, 19.390, 54.265

■ 3, 19.390, 54.265

■ 93, 19.390, 54.265

■ 0, 19.390, 54.265

■ 43, 19.390, 54.265

■ 43, 19.390, 54.265

■ 41, 25.023, 53.688

■ 46, 14.108, 54.925

■ 38, 30.985, 53.178

■ 48, 9.172, 55.636

36, 37.195, 52.714

51, 4.559, 56.369

34, 43.450, 52.205

53, 0.242, 55.816

32, 49.315, 51.428

56, 3.810, 238.159

30, 54.491, 50.765

59, 7.626, 238.942

62, 11.232,
239.754

64, 14.655,
240.563

67, 17.916,
241.359

Harmonies

Complementary

The Complementary color scheme is a pair of colors which are on the opposite of each other on the color wheel.



43, 19.390, 54.265



45, 15.577, 242.487

Rectangle

The Rectangle color scheme consists of four colors that form a rectangle on the color wheel.



43, 19.390, 54.265



43, 19.390, 104.265



43, 19.390, 234.265



43, 19.390, 284.265

Sweetspot

The Sweet Spot groups the original color and five complimentary colors.



43, 19.389, 54.271



64, 6.413, 56.247



39, 29.335, 338.721



33, 4.302, 56.171



85, 0.010, 296.813



36, 0.005, 296.813

Same Dimension

The Same Dimension uses a secret algorithm to generate beautiful new colors.



43, 19.389, 54.271



52, 29.861, 53.713



50, 25.263, 97.879



25, 2.404, 56.474



30, 54.259, 50.768



0, 0.000, 0.000

Inverse Universe

The Inverse Universe completely reimagines the original color for something new.



45, 15.577, 242.487



55, 22.564, 244.474



37, 26.831, 288.144



26, 2.307, 238.196



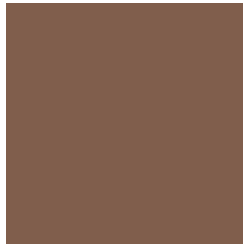
34, 31.118, 262.449



0, 0.000, 0.000

Previews

White Background



This preview shows how the CIELCh color 43, 19.390, 54.265 looks on a white background.

Color Contrast Check

Large Text (above 18pt) WCAG AA ✓ Pass

Any Text WCAG AA ✓ Pass

Large Text (above 18pt) WCAG AAA ✓ Pass

Any Text WCAG AAA × Fail

Black Background



This preview shows how the CIELCh color 43, 19.390, 54.265 looks on a black background.

Color Contrast Check

Large Text (above 18pt) WCAG AA ✓ Pass

Any Text WCAG AA × Fail

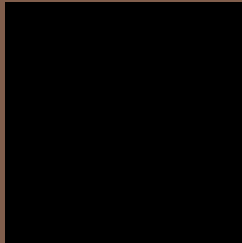
Large Text (above 18pt) WCAG AAA × Fail

Any Text WCAG AAA × Fail

If you want to check with other color combinations, try the [Color Contrast Checker](#).

CIELCh 43, 19.390, 54.265

Background



This preview shows how black text looks on a background with the CIELCh color 43, 19.390, 54.265.



This preview shows how white text looks on a background with the CIELCh color 43, 19.390, 54.265.

Color Blindness Simulation

Color vision deficiency is a very complex topic, and I could not describe the different causes any better than Wikipedia does, so if you want to learn more, you should check out their [article about color blindness](#).

Dichromacy



Original Color

43, 19.390, 54.265

Protanopia

43, 13.403, 96.657

Deuteranopia

43, 17.265, 72.097



Tritanopia
43, 17.275, 7.981

Trichromacy



Original Color
43, 19.390, 54.265

Protanomaly
43, 14.083, 77.327

Deuteranomaly
43, 18.055, 66.425

Tritanomaly
43, 16.502, 25.708

Monochromacy



Original Color
43, 19.390, 54.265

Achromatopsia
43, 0.006, 296.813

Achromatomaly
43, 6.690, 52.342

CSS Examples

Text

The CSS property to change the color of the text to CIELCh 43, 19.390, 54.265 is called "color". The color property can be set on classes, ids or directly on the HTML element.

This example shows how text in the color `rgb(128, 94, 76)` looks like.

```
.text, #text, p{  
    color:rgb(128, 94, 76)  
}
```

If you want to add a text shadow in that color use the text-shadow property, you can generate a text shadow directly with our [CSS Text Shadow Generator](#).

Here you see how black text with a 4 pixel rgb(128, 94, 76) colored shadow looks like.

```
.shadow{ text-shadow: 4px 4px 2px rgb(128, 94, 76) }
```

Border

The CSS property to change the border of an element to CIELCh 43, 19.390, 54.265 is called "border". The border property can be set on classes, ids or directly on the HTML element.

This example shows the color as border, it can be applied via the CSS property "border" or "border-color".

```
.border, #border, table{ border:4px solid rgb(128, 94, 76) }
```

If only the border color should be changed use the property border-color.

```
.border{ border-color:rgb(128, 94, 76) }
```

If you want to add a box shadow in that color use:

Here you see how a box with a 4 pixel rgb(128, 94, 76) colored shadow looks like.

```
.boxshadow{ -moz-box-shadow:4px 4px 4px  
4px rgb(128, 94, 76); -webkit-box-  
shadow:4px 4px 4px 4px rgb(128, 94, 76);  
box-shadow:4px 4px 4px 4px rgb(128, 94,  
76) }
```

Background

The CSS property to change the background color of an element to CIELCh 43, 19.390, 54.265 is called "background". The background property can be set on classes, ids or directly on the HTML element.

```
.background, #background, body{  
background: rgb(128, 94, 76) }
```

If only the background color should be changed can be used:

```
.background{ background-color: rgb(128, 94,  
76) }
```

This example shows the color as background, it is applied via the CSS property "background".

To optimize and compress your CSS code, you can use our [online CSS compressor and optimizer](#) based on csstidy. If you want to create a linear or radial gradient as background or border, check our [CSS Gradient Generator](#).

Hey! You found this booklet interesting? Support Converting Colors with the new Membership Option!

The pro membership hides all ads, plus gives you double the colors in the color bucket, and more awesome pro features!

[Learn more, Memberships starting at \\$2.50/m!](#)

**Follow me
on Twitter!**

@ConvertingColor