

Converting Colors

CIELCh(43, 35.966, 28.475)

Have a look what the booklet for
CIELCh(43, 35.966, 28.475) contains.

CIELCh(43, 35.887, 28.421)	3
<i>Conversions</i>	4
<i>Details</i>	6
<i>Harmonies</i>	11
<i>Previews</i>	20
<i>Color Blindness Simulation</i>	23
<i>CSS Examples</i>	26

Color

CIELCh(43, 35.887, 28.421)

Conversions

Conversions Part 1

Format	Color
Hex	9C4F4B
RGB	156, 79, 75
RGB Percent	61%, 31%, 29%
CMY	0.3884, 0.6903, 0.7060
CMYK	0.00, 0.49, 0.52, 0.39
HSL	3°, 35%, 45%
HSV	3°, 52%, 61%
XYZ	17.7641, 13.1578, 8.2538
YIQ	101.5670, 47.1760, 15.0800

Conversions

Conversions Part 2

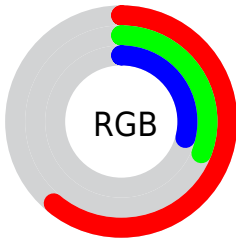
Format	Color
RYB	156, 79, 75
Decimal	10243915
CIELab	43.00, 31.56, 17.08
CIElCh	43, 35.887, 28.421
Yxy	13.1578, 0.4534, 0.3359
Android (android.graphics.Color)	4288433995 (0xFF9C4F4B)
YUV	101.5670, -13.0975, 47.7377
Hunter-Lab	36.2736, 23.9371, 11.9005

Details

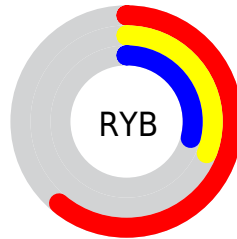
The CIELCh color **43, 35.887, 28.421** is a dark color, and the websafe version is hex **993333**. A complement of this color would be **58, 24.400, 202.659**, and the grayscale version is **43, 0.006, 296.813**.

A 20% lighter version of the original color is **63, 35.990, 28.334**, and **23, 35.932, 28.882** is the 20% darker color. If you saturate the color by 10%, you get **40, 44.023, 30.367**, and if you desaturate by 10%, it is **47, 28.021, 26.919**.

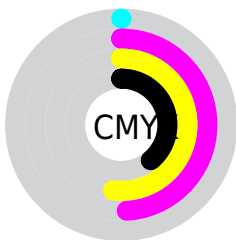
Distribution



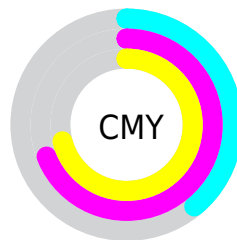
- Red (61%)
- Green (31%)
- Blue (29%)



- Red (61%)
- Yellow (31%)
- Blue (29%)



- Cyan (0%)
- Magenta (49%)
- Yellow (52%)
- Black (39%)



- Cyan (39%)
- Magenta (69%)
- Yellow (71%)

Brightness & Saturation Gradients

These gradients show how the CIELCh color 43, 35.887, 28.421 changes by changing the brightness by 10 percent. The first figure shows a shift by +10% for each color and the second figure -10%.

Similar to the brightness gradients but the following saturation gradients show a change of the CIELCh color 43, 35.887, 28.421 by changing the saturation by 10% instead.

■ 43, 35.887, 28.421

■ 43, 35.887, 28.421

■ 100, 35.887,
28.421

■ 33, 35.887, 28.421

■ 63, 35.887, 28.421

■ 23, 35.887, 28.421

■ 73, 35.887, 28.421

■ 13, 35.887, 28.421

■ 83, 35.887, 28.421

■ 3, 35.887, 28.421

■ 93, 35.887, 28.421

■ 0, 35.887, 28.421

■ 43, 35.887, 28.421

■ 43, 35.887, 28.421

■ 40, 44.023, 30.367

■ 47, 28.021, 26.919

■ 37, 52.214, 32.786

■ 51, 20.564, 25.772

■ 35, 60.102, 35.583

■ 55, 13.585, 24.902

■ 33, 66.977, 38.313

■ 59, 7.104, 24.229

■ 32, 71.347, 40.320

■ 63, 1.106, 23.397

■ 68, 4.441, 203.564

■ 72, 9.577, 203.247

■ 77, 14.347,
203.040

■ 81, 18.794,
202.896

Harmonies

Complementary

The Complementary color scheme is a pair of colors which are on the opposite of each other on the color wheel.



43, 35.887, 28.421



58, 24.400, 202.659

Rectangle

The Rectangle color scheme consists of four colors that form a rectangle on the color wheel.



43, 35.887, 28.421



43, 35.887, 78.421



43, 35.887, 208.421



43, 35.887, 258.421

Sweetspot

The Sweet Spot groups the original color and five complimentary colors.



43, 35.885, 28.424



73, 12.064, 24.506



45, 52.862, 328.065



37, 8.187, 24.633



91, 0.011, 296.813



43, 0.006, 296.813

Same Dimension

The Same Dimension uses a secret algorithm to generate beautiful new colors.



43, 35.885, 28.424



51, 55.023, 30.654



52, 30.840, 72.319



31, 3.368, 24.067



29, 66.417, 39.983



1, 4.270, 23.498

Inverse Universe

The Inverse Universe completely reimagines the original color for something new.



58, 24.400, 202.659



74, 33.845, 202.778



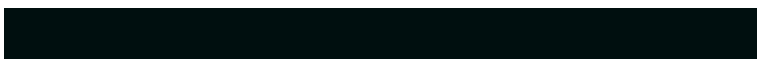
47, 27.480, 268.730



33, 3.178, 203.484



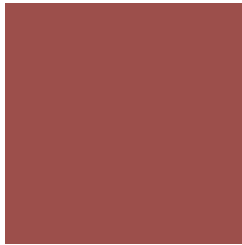
51, 30.508, 204.399



3, 4.214, 204.803

Previews

White Background



This preview shows how the CIELCh color 43, 35.887, 28.421 looks on a white background.

Color Contrast Check

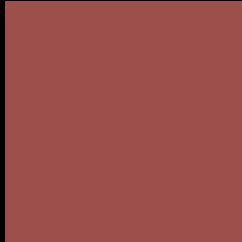
Large Text (above 18pt) WCAG AA ✓ Pass

Any Text WCAG AA ✓ Pass

Large Text (above 18pt) WCAG AAA ✓ Pass

Any Text WCAG AAA × Fail

Black Background



This preview shows how the CIE LCh color 43, 35.887, 28.421 looks on a black background.

Color Contrast Check

Large Text (above 18pt) WCAG AA ✓ Pass

Any Text WCAG AA × Fail

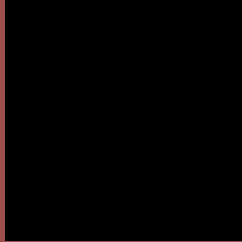
Large Text (above 18pt) WCAG AAA × Fail

Any Text WCAG AAA × Fail

If you want to check with other color combinations, try the [Color Contrast Checker](#).

CIELCh 43, 35.887, 28.421

Background



This preview shows how black text looks on a background with the CIELCh color 43, 35.887, 28.421.

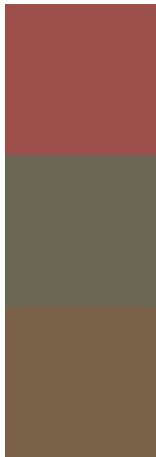


This preview shows how white text looks on a background with the CIELCh color 43, 35.887, 28.421.

Color Blindness Simulation

Color vision deficiency is a very complex topic, and I could not describe the different causes any better than Wikipedia does, so if you want to learn more, you should check out their [article about color blindness](#).

Dichromacy



Original Color

43, 35.887, 28.421

Protanopia

43, 10.498, 94.057

Deuteranopia

43, 19.348, 72.555



Tritanopia
43, 35.516, 20.380

Trichromacy



Original Color
43, 35.887, 28.421

Protanomaly
43, 16.330, 49.118

Deuteranomaly
43, 23.272, 48.731

Tritanomaly
43, 35.876, 23.164

Monochromacy



Original Color
43, 35.887, 28.421

Achromatopsia
43, 0.006, 296.813

Achromatomaly
43, 12.369, 26.511

CSS Examples

Text

The CSS property to change the color of the text to CIELCh 43, 35.887, 28.421 is called "color". The color property can be set on classes, ids or directly on the HTML element.

This example shows how text in the color `rgb(156, 79, 75)` looks like.

```
.text, #text, p{  
    color:rgb(156, 79, 75)  
}
```

If you want to add a text shadow in that color use the text-shadow property, you can generate a text shadow directly with our [CSS Text Shadow Generator](#).

Here you see how black text with a 4 pixel rgb(156, 79, 75) colored shadow looks like.

```
.shadow{ text-shadow: 4px 4px 2px rgb(156, 79, 75) }
```

Border

The CSS property to change the border of an element to CIELCh 43, 35.887, 28.421 is called "border". The border property can be set on classes, ids or directly on the HTML element.

This example shows the color as border, it can be applied via the CSS property "border" or "border-color".

```
.border, #border, table{ border:4px solid rgb(156, 79, 75) }
```

If only the border color should be changed use the property border-color.

```
.border{ border-color:rgb(156, 79, 75) }
```

If you want to add a box shadow in that color use:

Here you see how a box with a 4 pixel rgb(156, 79, 75) colored shadow looks like.

```
.boxshadow{ -moz-box-shadow:4px 4px 4px  
4px rgb(156, 79, 75); -webkit-box-  
shadow:4px 4px 4px 4px rgb(156, 79, 75);  
box-shadow:4px 4px 4px 4px rgb(156, 79,  
75) }
```

Background

The CSS property to change the background color of an element to CIELCh 43, 35.887, 28.421 is called "background". The background property can be set on classes, ids or directly on the HTML element.

```
.background, #background, body{  
background: rgb(156, 79, 75) }
```

If only the background color should be changed can be used:

```
.background{ background-color: rgb(156, 79,  
75) }
```

This example shows the color as background, it is applied via the CSS property "background".

To optimize and compress your CSS code, you can use our [online CSS compressor and optimizer](#) based on csstidy. If you want to create a linear or radial gradient as background or border, check our [CSS Gradient Generator](#).

Hey! You found this booklet
interesting? Support Converting
Colors with the new Membership
Option!

The pro membership hides all ads, plus gives you
double the colors in the color bucket, and more
awesome pro features!

[Learn more, Memberships starting at \\$2.50/m!](#)

**Follow me
on Twitter!**

@ConvertingColor