

Converting Colors

CIELCh(43, 43.920, 1.239)

Have a look what the booklet for
CIELCh(43, 43.920, 1.239) contains.

CIELCh(43, 43.761, 0.994)	3
<i>Conversions</i>	4
<i>Details</i>	6
<i>Harmonies</i>	11
<i>Previews</i>	20
<i>Color Blindness Simulation</i>	23
<i>CSS Examples</i>	26

Color

CIELCh(43, 43.761, 0.994)

Conversions

Conversions Part 1

Format	Color
Hex	A64466
RGB	166, 68, 102
RGB Percent	65%, 27%, 40%
CMY	0.3497, 0.7340, 0.6006
CMYK	0.00, 0.59, 0.39, 0.35
HSL	339°, 42%, 46%
HSV	339°, 59%, 65%
XYZ	20.1354, 13.1578, 14.0082
YIQ	101.1780, 47.4940, 31.3500

Conversions

Conversions Part 2

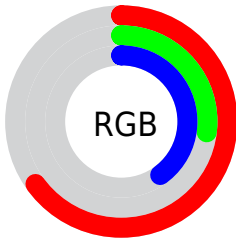
Format	Color
RYB	166, 68, 102
Decimal	10896486
CIELab	43.00, 43.75, 0.76
CIElCh	43, 43.761, 0.994
Yxy	13.1578, 0.4257, 0.2782
Android (android.graphics.Color)	4289086566 (0xFFA64466)
YUV	101.1780, 0.4052, 56.8489
Hunter-Lab	36.2736, 35.6060, 2.4948

Details

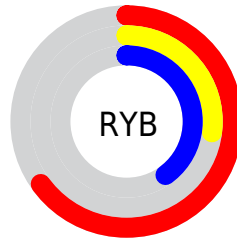
The CIELCh color $43, 43.761, 0.994$ is a dark color, and the websafe version is hex 993366 . A complement of this color would be $62, 38.134, 166.140$, and the grayscale version is $43, 0.006, 296.813$.

A 20% lighter version of the original color is $63, 43.962, 0.743$, and $23, 43.635, 1.281$ is the 20% darker color. If you saturate the color by 10%, you get $40, 50.025, 3.584$, and if you desaturate by 10%, it is $47, 36.705, 358.925$.

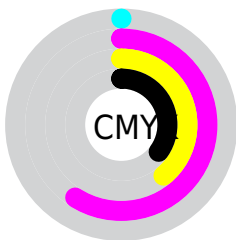
Distribution



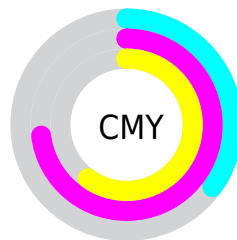
- Red (65%)
- Green (27%)
- Blue (40%)



- Red (65%)
- Yellow (27%)
- Blue (40%)



- Cyan (0%)
- Magenta (59%)
- Yellow (39%)
- Black (35%)



- Cyan (35%)
- Magenta (73%)
- Yellow (60%)

Brightness & Saturation Gradients

These gradients show how the CIELCh color 43, 43.761, 0.994 changes by changing the brightness by 10 percent. The first figure shows a shift by +10% for each color and the second figure -10%.


Similar to the brightness gradients but the following saturation gradients show a change of the CIELCh color 43, 43.761, 0.994 by changing the saturation by 10% instead.

 43, 43.761, 0.994  43, 43.761, 0.994

 100, 43.761, 0.994  33, 43.761, 0.994

 63, 43.761, 0.994  23, 43.761, 0.994


 73, 43.761, 0.994  13, 43.761, 0.994

 83, 43.761, 0.994  3, 43.761, 0.994

 93, 43.761, 0.994  0, 43.761, 0.994

 43, 43.761, 0.994  43, 43.761, 0.994

 40, 50.025, 3.584  47, 36.705,
358.925

 38, 55.174, 6.854  50, 29.211,
357.236

 36, 59.027, 10.966

■ 35, 61.920, 15.822

■ 55, 21.561,
355.827

■ 35, 62.199, 16.258

■ 59, 13.959,
354.623

■ 64, 6.535, 353.555

■ 68, 0.638, 173.335

■ 73, 7.528, 171.949

■ 78, 14.126,
171.193

■ 83, 20.441,
170.522

Harmonies

Complementary

The Complementary color scheme is a pair of colors which are on the opposite of each other on the color wheel.



43, 43.761, 0.994



62, 38.134, 166.140

Rectangle

The Rectangle color scheme consists of four colors that form a rectangle on the color wheel.



43, 43.761, 0.994



43, 43.761, 50.994



43, 43.761, 180.994



43, 43.761, 230.994

Sweetspot

The Sweet Spot groups the original color and five complimentary colors.



43, 43.758, 0.996



76, 16.350, 354.539



41, 61.070, 316.519



39, 11.502, 354.858



94, 0.011, 296.813



46, 0.006, 296.813

Same Dimension

The Same Dimension uses a secret algorithm to generate beautiful new colors.



43, 43.758, 0.996



51, 63.270, 4.559



45, 40.982, 36.537



33, 4.120, 353.577



31, 57.079, 15.681



2, 7.201, 356.046

Inverse Universe

The Inverse Universe completely reimagines the original color for something new.



43, 43.758, 0.996



51, 63.270, 4.559



58, 25.755, 216.485



33, 4.120, 353.577



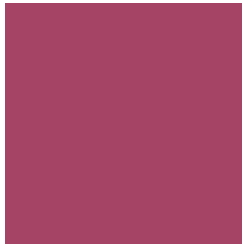
31, 57.079, 15.681



2, 7.201, 356.046

Previews

White Background



This preview shows how the CIELCh color 43, 43.761, 0.994 looks on a white background.

Color Contrast Check

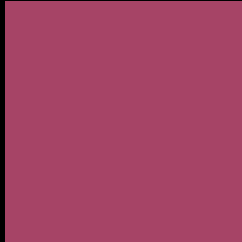
Large Text (above 18pt) WCAG AA ✓ Pass

Any Text WCAG AA ✓ Pass

Large Text (above 18pt) WCAG AAA ✓ Pass

Any Text WCAG AAA × Fail

Black Background



This preview shows how the CIE LCh color 43, 43.761, 0.994 looks on a black background.

Color Contrast Check

Large Text (above 18pt) WCAG AA ✓ Pass

Any Text WCAG AA × Fail

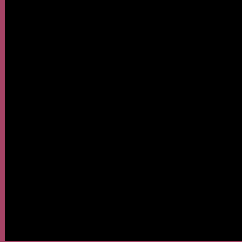
Large Text (above 18pt) WCAG AAA × Fail

Any Text WCAG AAA × Fail

If you want to check with other color combinations, try the [Color Contrast Checker](#).

CIELCh 43, 43.761, 0.994

Background



This preview shows how black text looks on a background with the CIELCh color 43, 43.761, 0.994.



This preview shows how white text looks on a background with the CIELCh color 43, 43.761, 0.994.

Color Blindness Simulation

Color vision deficiency is a very complex topic, and I could not describe the different causes any better than Wikipedia does, so if you want to learn more, you should check out their [article about color blindness](#).

Dichromacy



Original Color

43, 43.761, 0.994

Protanopia

43, 12.659, 286.857

Deuteranopia

43, 6.536, 30.661



Tritanopia
43, 41.117, 22.204

Trichromacy



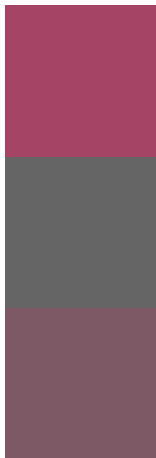
Original Color
43, 43.761, 0.994

Protanomaly
42, 20.761, 333.544

Deuteranomaly
43, 20.289, 3.675

Tritanomaly
43, 41.527, 13.930

Monochromacy



Original Color
43, 43.761, 0.994

Achromatopsia
43, 0.006, 296.813

Achromatomaly
42, 16.819, 356.631

CSS Examples

Text

The CSS property to change the color of the text to CIELCh 43, 43.761, 0.994 is called "color". The color property can be set on classes, ids or directly on the HTML element.

This example shows how text in the color `rgb(166, 68, 102)` looks like.

```
.text, #text, p{  
    color:rgb(166, 68, 102)  
}
```

If you want to add a text shadow in that color use the text-shadow property, you can generate a text shadow directly with our [CSS Text Shadow Generator](#).

Here you see how black text with a 4 pixel rgb(166, 68, 102) colored shadow looks like.

```
.shadow{ text-shadow: 4px 4px 2px rgb(166, 68, 102) }
```

Border

The CSS property to change the border of an element to CIELCh 43, 43.761, 0.994 is called "border". The border property can be set on classes, ids or directly on the HTML element.

This example shows the color as border, it can be applied via the CSS property "border" or "border-color".

```
.border, #border, table{ border:4px solid rgb(166, 68, 102) }
```

If only the border color should be changed use the property border-color.

```
.border{ border-color:rgb(166, 68, 102) }
```

If you want to add a box shadow in that color use:

Here you see how a box with a 4 pixel rgb(166, 68, 102) colored shadow looks like.

```
.boxshadow{ -moz-box-shadow:4px 4px 4px  
4px rgb(166, 68, 102); -webkit-box-  
shadow:4px 4px 4px 4px rgb(166, 68, 102);  
box-shadow:4px 4px 4px 4px rgb(166, 68,  
102) }
```

Background

The CSS property to change the background color of an element to CIELCh 43, 43.761, 0.994 is called "background". The background property can be set on classes, ids or directly on the HTML element.

```
.background, #background, body{  
background: rgb(166, 68, 102) }
```

If only the background color should be changed can be used:

```
.background{ background-color: rgb(166, 68,  
102) }
```

This example shows the color as background, it is applied via the CSS property "background".

To optimize and compress your CSS code, you can use our [online CSS compressor and optimizer](#) based on csstidy. If you want to create a linear or radial gradient as background or border, check our [CSS Gradient Generator](#).

Hey! You found this booklet interesting? Support Converting Colors with the new Membership Option!

The pro membership hides all ads, plus gives you double the colors in the color bucket, and more awesome pro features!

[Learn more, Memberships starting at \\$2.50/m!](#)

**Follow me
on Twitter!**

@ConvertingColor