

Converting Colors

CIELCh(43, 46.726, 8.417)

Have a look what the booklet for
CIELCh(43, 46.726, 8.417) contains.

CIELCh(43, 46.726, 8.417)	3
<i>Conversions</i>	4
<i>Details</i>	6
<i>Harmonies</i>	11
<i>Previews</i>	20
<i>Color Blindness Simulation</i>	23
<i>CSS Examples</i>	26

Color

CIELCh(43, 46.726, 8.417)

Conversions

Conversions Part 1

Format	Color
Hex	AB405C
RGB	171, 64, 92
RGB Percent	67%, 25%, 36%
CMY	0.3284, 0.7481, 0.6384
CMYK	0.00, 0.62, 0.46, 0.33
HSL	344°, 45%, 46%
HSV	344°, 62%, 67%
XYZ	20.6398, 13.1578, 11.6267
YIQ	99.1850, 54.7840, 31.3920

Conversions

Conversions Part 2

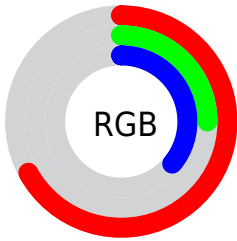
Format	Color
R_{YB}	171, 64, 92
Decimal	11223132
CIE _{Lab}	43.00, 46.22, 6.84
CIE _{LCh}	43, 46.726, 8.417
Yxy	13.1578, 0.4544, 0.2897
Android (android.graphics.Color)	4289413212 (0xFFAB405C)
YUV	99.1850, -3.5422, 62.9818
Hunter-Lab	36.2736, 38.0881, 6.3875

Details

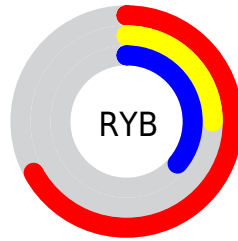
The CIELCh color **43, 46.726, 8.417** is a dark color, and the websafe version is hex **993366**. A complement of this color would be **64, 37.801, 171.790**, and the grayscale version is **42, 0.006, 296.813**.

A 20% lighter version of the original color is **63, 46.737, 8.456**, and **23, 46.626, 8.078** is the 20% darker color. If you saturate the color by 10%, you get **40, 53.237, 11.547**, and if you desaturate by 10%, it is **47, 39.476, 5.941**.

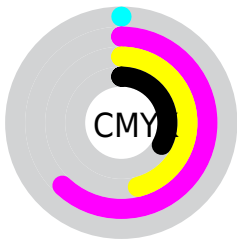
Distribution



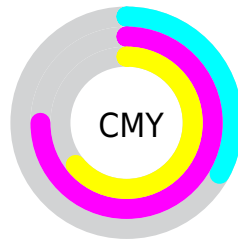
- Red (67%)
- Green (25%)
- Blue (36%)



- Red (67%)
- Yellow (25%)
- Blue (36%)



- Cyan (0%)
- Magenta (62%)
- Yellow (46%)
- Black (33%)



- Cyan (33%)
- Magenta (75%)
- Yellow (64%)

Brightness & Saturation Gradients

These gradients show how the CIELCh color 43, 46.726, 8.417 changes by changing the brightness by 10 percent. The first figure shows a shift by +10% for each color and the second figure -10%.

Similar to the brightness gradients but the following saturation gradients show a change of the CIELCh color 43, 46.726, 8.417 by changing the saturation by 10% instead.

 43, 46.726, 8.417  43, 46.726, 8.417

 100, 46.726, 8.417  33, 46.726, 8.417


 63, 46.726, 8.417  23, 46.726, 8.417

 73, 46.726, 8.417  13, 46.726, 8.417

 83, 46.726, 8.417  3, 46.726, 8.417

 93, 46.726, 8.417  0, 46.726, 8.417

 43, 46.726, 8.417  43, 46.726, 8.417

 40, 53.237, 11.547  47, 39.476, 5.941

 38, 58.755, 15.478  50, 31.819, 3.957

 36, 63.215, 20.284  55, 24.042, 2.342

36, 66.249, 24.160

59, 16.356, 0.996

64, 8.895, 359.843

69, 1.734, 358.666

74, 5.098, 178.152

79, 11.599,
177.351

84, 17.780,
176.664

Harmonies

Complementary

The Complementary color scheme is a pair of colors which are on the opposite of each other on the color wheel.



43, 46.726, 8.417



64, 37.801, 171.790

Rectangle

The Rectangle color scheme consists of four colors that form a rectangle on the color wheel.



43, 46.726, 8.417



43, 46.726, 58.417



43, 46.726, 188.417



43, 46.726, 238.417

Sweetspot

The Sweet Spot groups the original color and five complimentary colors.



43, 46.723, 8.419



77, 16.952, 0.615



42, 66.262, 319.166



40, 11.826, 0.951



95, 0.011, 296.813



47, 0.006, 296.813

Same Dimension

The Same Dimension uses a secret algorithm to generate beautiful new colors.



43, 46.723, 8.419



51, 67.297, 12.952



47, 42.912, 43.244



34, 4.046, 359.501



31, 59.974, 23.502



2, 8.199, 2.247

Inverse Universe

The Inverse Universe completely reimagines the original color for something new.



43, 46.723, 8.419



51, 67.297, 12.952



57, 26.763, 230.150



34, 4.046, 359.501



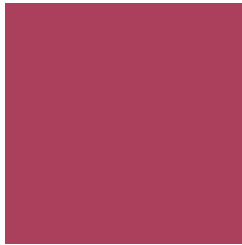
31, 59.974, 23.502



2, 8.199, 2.247

Previews

White Background



This preview shows how the CIELCh color 43, 46.726, 8.417 looks on a white background.

Color Contrast Check

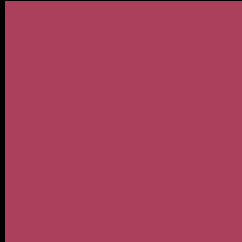
Large Text (above 18pt) WCAG AA ✓ Pass

Any Text WCAG AA ✓ Pass

Large Text (above 18pt) WCAG AAA ✓ Pass

Any Text WCAG AAA × Fail

Black Background



This preview shows how the CIE LCh color 43, 46.726, 8.417 looks on a black background.

Color Contrast Check

Large Text (above 18pt) WCAG AA ✓ Pass

Any Text WCAG AA × Fail

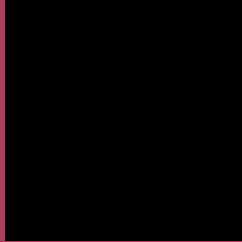
Large Text (above 18pt) WCAG AAA × Fail

Any Text WCAG AAA × Fail

If you want to check with other color combinations, try the [Color Contrast Checker](#).

CIELCh 43, 46.726, 8.417

Background



This preview shows how black text looks on a background with the CIELCh color 43, 46.726, 8.417.



This preview shows how white text looks on a background with the CIELCh color 43, 46.726, 8.417.

Color Blindness Simulation

Color vision deficiency is a very complex topic, and I could not describe the different causes any better than Wikipedia does, so if you want to learn more, you should check out their [article about color blindness](#).

Dichromacy



Original Color

43, 46.726, 8.417

Protanopia

43, 6.616, 287.713

Deuteranopia

43, 11.142, 56.227



Tritanopia
43, 46.411, 24.525

Trichromacy



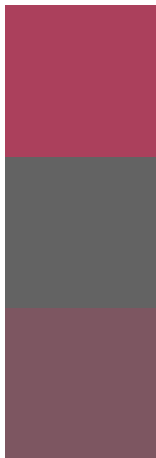
Original Color
43, 46.726, 8.417

Protanomaly
42, 19.150, 350.189

Deuteranomaly
42, 22.713, 18.278

Tritanomaly
43, 45.776, 19.020

Monochromacy



Original Color
43, 46.726, 8.417

Achromatopsia
42, 0.006, 296.813

Achromatomaly
41, 17.913, 0.541

CSS Examples

Text

The CSS property to change the color of the text to CIELCh 43, 46.726, 8.417 is called "color". The color property can be set on classes, ids or directly on the HTML element.

This example shows how text in the color `rgb(171, 64, 92)` looks like.

```
.text, #text, p{  
    color:rgb(171, 64, 92)  
}
```

If you want to add a text shadow in that color use the text-shadow property, you can generate a text shadow directly with our [CSS Text Shadow Generator](#).

Here you see how black text with a 4 pixel rgb(171, 64, 92) colored shadow looks like.

```
.shadow{ text-shadow: 4px 4px 2px rgb(171, 64, 92) }
```

Border

The CSS property to change the border of an element to CIELCh 43, 46.726, 8.417 is called "border". The border property can be set on classes, ids or directly on the HTML element.

This example shows the color as border, it can be applied via the CSS property "border" or "border-color".

```
.border, #border, table{ border:4px solid rgb(171, 64, 92) }
```

If only the border color should be changed use the property `border-color`.

```
.border{ border-color:rgb(171, 64, 92) }
```

If you want to add a box shadow in that color use:

Here you see how a box with a 4 pixel `rgb(171, 64, 92)` colored shadow looks like.

```
.boxshadow{ -moz-box-shadow:4px 4px 4px  
4px rgb(171, 64, 92); -webkit-box-  
shadow:4px 4px 4px 4px rgb(171, 64, 92);  
box-shadow:4px 4px 4px 4px rgb(171, 64,  
92) }
```

Background

The CSS property to change the background color of an element to CIELCh 43, 46.726, 8.417 is called "background". The background property can be set on classes, ids or directly on the HTML element.

```
.background, #background, body{  
background: rgb(171, 64, 92) }
```

If only the background color should be changed can be used:

```
.background{ background-color: rgb(171, 64,  
92) }
```

This example shows the color as background, it is applied via the CSS property "background".

To optimize and compress your CSS code, you can use our [online CSS compressor and optimizer](#) based on csstidy. If you want to create a linear or radial gradient as background or border, check our [CSS Gradient Generator](#).

Hey! You found this booklet interesting? Support Converting Colors with the new Membership Option!

The pro membership hides all ads, plus gives you double the colors in the color bucket, and more awesome pro features!

[Learn more, Memberships starting at \\$2.50/m!](#)

**Follow me
on Twitter!**

@ConvertingColor