

Converting Colors

CIELCh(44, 43.752, 17.053)

Have a look what the booklet for
CIELCh(44, 43.752, 17.053) contains.

CIELCh(44, 43.719, 17.176)	3
<i>Conversions</i>	4
<i>Details</i>	6
<i>Harmonies</i>	11
<i>Previews</i>	20
<i>Color Blindness Simulation</i>	23
<i>CSS Examples</i>	26

Color

CIELCh(44, 43.719, 17.176)

Conversions

Conversions Part 1

Format	Color
Hex	AB4855
RGB	171, 72, 85
RGB Percent	67%, 28%, 33%
CMY	0.3312, 0.7192, 0.6681
CMYK	0.00, 0.58, 0.50, 0.33
HSL	352°, 41%, 47%
HSV	352°, 58%, 67%
XYZ	20.6103, 13.8382, 10.1009
YIQ	103.0830, 54.8310, 25.0310

Conversions

Conversions Part 2

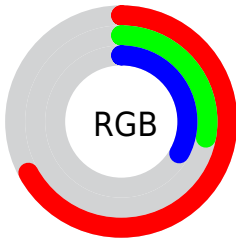
Format	Color
RYB	171, 72, 85
Decimal	11225173
CIELab	44.00, 41.77, 12.91
CIElCh	44, 43.719, 17.176
Yxy	13.8382, 0.4626, 0.3106
Android (android.graphics.Color)	4289415253 (0xFFAB4855)
YUV	103.0830, -8.9149, 59.5632
Hunter-Lab	37.1997, 33.7974, 9.9408

Details

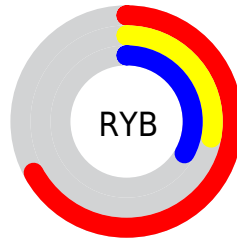
The CIELCh color **44, 43.719, 17.176** is a dark color, and the websafe version is hex **CC6666**. A complement of this color would be **64, 32.070, 183.520**, and the grayscale version is **43, 0.006, 296.813**.

A 20% lighter version of the original color is **64, 43.846, 17.441**, and **24, 43.799, 17.264** is the 20% darker color. If you saturate the color by 10%, you get **41, 51.419, 20.159**, and if you desaturate by 10%, it is **48, 35.737, 14.823**.

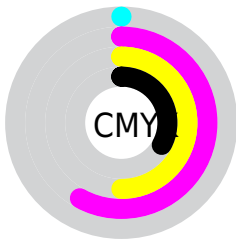
Distribution



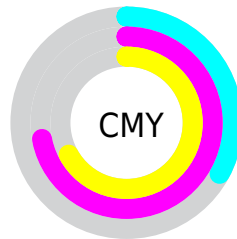
- Red (67%)
- Green (28%)
- Blue (33%)



- Red (67%)
- Yellow (28%)
- Blue (33%)



- Cyan (0%)
- Magenta (58%)
- Yellow (50%)
- Black (33%)



- Cyan (33%)
- Magenta (72%)
- Yellow (67%)

Brightness & Saturation Gradients

These gradients show how the CIELCh color 44, 43.719, 17.176 changes by changing the brightness by 10 percent. The first figure shows a shift by +10% for each color and the second figure -10%.

Similar to the brightness gradients but the following saturation gradients show a change of the CIELCh color 44, 43.719, 17.176 by changing the saturation by 10% instead.

■ 44, 43.719, 17.176

■ 44, 43.719, 17.176

■ 100, 43.719,
17.176

■ 34, 43.719, 17.176

■ 64, 43.719, 17.176

■ 24, 43.719, 17.176

■ 74, 43.719, 17.176

■ 14, 43.719, 17.176

■ 84, 43.719, 17.176

■ 4, 43.719, 17.176

■ 94, 43.719, 17.176

■ 0, 43.719, 17.176

■ 44, 43.719, 17.176

■ 44, 43.719, 17.176

■ 41, 51.419, 20.159

■ 48, 35.737, 14.823

■ 38, 58.576, 23.869

■ 52, 27.744, 12.957

37, 64.989, 28.286

56, 19.944, 11.463

36, 70.600, 32.970

61, 12.469, 10.240

35, 71.684, 33.778

66, 5.385, 9.193

71, 1.287, 188.808

76, 7.554, 187.791

81, 13.441,
187.147

86, 18.980,
186.596

Harmonies

Complementary

The Complementary color scheme is a pair of colors which are on the opposite of each other on the color wheel.



44, 43.719, 17.176



64, 32.070, 183.520

Rectangle

The Rectangle color scheme consists of four colors that form a rectangle on the color wheel.



44, 43.719, 17.176



44, 43.719, 67.176



44, 43.719, 197.176



44, 43.719, 247.176

Sweetspot

The Sweet Spot groups the original color and five complimentary colors.



44, 43.717, 17.179



78, 14.540, 10.161



45, 62.686, 323.210



40, 9.860, 10.378



95, 0.011, 296.813



47, 0.006, 296.813

Same Dimension

The Same Dimension uses a secret algorithm to generate beautiful new colors.



44, 43.717, 17.179



52, 65.471, 21.276



52, 37.164, 55.191



33, 3.774, 9.321



30, 64.140, 33.160



1, 6.675, 10.067

Inverse Universe

The Inverse Universe completely reimagines the original color for something new.



44, 43.717, 17.179



52, 65.471, 21.276



53, 26.962, 249.859



33, 3.774, 9.321



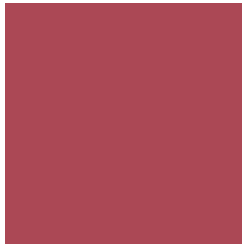
30, 64.140, 33.160



1, 6.675, 10.067

Previews

White Background



This preview shows how the CIELCh color 44, 43.719, 17.176 looks on a white background.

Color Contrast Check

Large Text (above 18pt) WCAG AA ✓ Pass

Any Text WCAG AA ✓ Pass

Large Text (above 18pt) WCAG AAA ✓ Pass

Any Text WCAG AAA × Fail

Black Background



This preview shows how the CIE LCh color 44, 43.719, 17.176 looks on a black background.

Color Contrast Check

Large Text (above 18pt) WCAG AA ✓ Pass

Any Text WCAG AA × Fail

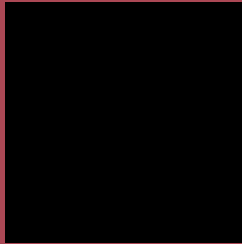
Large Text (above 18pt) WCAG AAA × Fail

Any Text WCAG AAA × Fail

If you want to check with other color combinations, try the [Color Contrast Checker](#).

CIELCh 44, 43.719, 17.176

Background



This preview shows how black text looks on a background with the CIELCh color 44, 43.719, 17.176.



This preview shows how white text looks on a background with the CIELCh color 44, 43.719, 17.176.

Color Blindness Simulation

Color vision deficiency is a very complex topic, and I could not describe the different causes any better than Wikipedia does, so if you want to learn more, you should check out their [article about color blindness](#).

Dichromacy



Original Color

44, 43.719, 17.176

Protanopia

44, 2.174, 74.674

Deuteranopia

44, 16.036, 67.597



Tritanopia
44, 43.723, 22.876

Trichromacy



Original Color
44, 43.719, 17.176

Protanomaly
43, 16.655, 15.608

Deuteranomaly
44, 23.564, 33.861

Tritanomaly
44, 43.815, 20.824

Monochromacy



Original Color
44, 43.719, 17.176

Achromatopsia
44, 0.006, 296.813

Achromatomaly
43, 15.783, 12.972

CSS Examples

Text

The CSS property to change the color of the text to CIELCh 44, 43.719, 17.176 is called "color". The color property can be set on classes, ids or directly on the HTML element.

This example shows how text in the color `rgb(171, 72, 85)` looks like.

```
.text, #text, p{  
    color:rgb(171, 72, 85)  
}
```

If you want to add a text shadow in that color use the text-shadow property, you can generate a text shadow directly with our [CSS Text Shadow Generator](#).

Here you see how black text with a 4 pixel rgb(171, 72, 85) colored shadow looks like.

```
.shadow{ text-shadow: 4px 4px 2px rgb(171, 72, 85) }
```

Border

The CSS property to change the border of an element to CIELCh 44, 43.719, 17.176 is called "border". The border property can be set on classes, ids or directly on the HTML element.

This example shows the color as border, it can be applied via the CSS property "border" or "border-color".

```
.border, #border, table{ border:4px solid rgb(171, 72, 85) }
```

If only the border color should be changed use the property border-color.

```
.border{ border-color:rgb(171, 72, 85) }
```

If you want to add a box shadow in that color use:

Here you see how a box with a 4 pixel rgb(171, 72, 85) colored shadow looks like.

```
.boxshadow{ -moz-box-shadow:4px 4px 4px  
4px rgb(171, 72, 85); -webkit-box-  
shadow:4px 4px 4px 4px rgb(171, 72, 85);  
box-shadow:4px 4px 4px 4px rgb(171, 72,  
85) }
```

Background

The CSS property to change the background color of an element to CIELCh 44, 43.719, 17.176 is called "background". The background property can be set on classes, ids or directly on the HTML element.

```
.background, #background, body{  
background: rgb(171, 72, 85) }
```

If only the background color should be changed can be used:

```
.background{ background-color: rgb(171, 72,  
85) }
```

This example shows the color as background, it is applied via the CSS property "background".

To optimize and compress your CSS code, you can use our [online CSS compressor and optimizer](#) based on csstidy. If you want to create a linear or radial gradient as background or border, check our [CSS Gradient Generator](#).

Hey! You found this booklet interesting? Support Converting Colors with the new Membership Option!

The pro membership hides all ads, plus gives you double the colors in the color bucket, and more awesome pro features!

[Learn more, Memberships starting at \\$2.50/m!](#)

**Follow me
on Twitter!**

@ConvertingColor