

Converting Colors

CIELCh(45, 60.493, 4.940)

Have a look what the booklet for
CIELCh(45, 60.493, 4.940) contains.

CIELCh(45, 60.461, 5.062)	3
<i>Conversions</i>	4
<i>Details</i>	6
<i>Harmonies</i>	11
<i>Previews</i>	20
<i>Color Blindness Simulation</i>	23
<i>CSS Examples</i>	26

Color

CIELCh(45, 60.461, 5.062)

Conversions

Conversions Part 1

Format	Color
Hex	C23064
RGB	194, 48, 100
RGB Percent	76%, 19%, 39%
CMY	0.2386, 0.8110, 0.6073
CMYK	0.00, 0.75, 0.48, 0.24
HSL	339°, 60%, 48%
HSV	339°, 75%, 76%
XYZ	25.6606, 14.5417, 13.5442
YIQ	97.5820, 70.3240, 47.1240

Conversions

Conversions Part 2

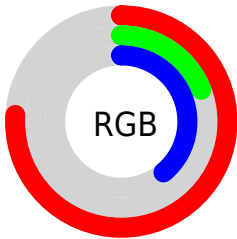
Format	Color
R_{YB}	194, 48, 100
Decimal	12726372
CIE Lab	45.00, 60.23, 5.33
CIE LCh	45, 60.461, 5.062
Yxy	14.5417, 0.4774, 0.2706
Android (android.graphics.Color)	4290916452 (0xFFC23064)
YUV	97.5820, 1.1921, 84.5586
Hunter-Lab	38.1336, 53.3810, 5.6350

Details

The CIELCh color **45, 60.461, 5.062** is a dark color, and the websafe version is hex **CC3366**. The color can be described as dark muted rose. A complement of this color would be **70, 52.258, 162.750**, and the grayscale version is **41, 0.006, 296.813**.

A 20% lighter version of the original color is **65, 60.366, 4.874**, and **28, 52.750, 10.192** is the 20% darker color. If you saturate the color by 10%, you get **43, 65.206, 8.905**, and if you desaturate by 10%, it is **48, 54.224, 2.030**.

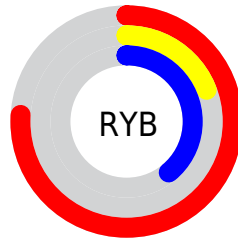
Distribution



Red (76%)

Green (19%)

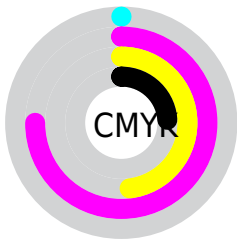
Blue (39%)



Red (76%)

Yellow (19%)

Blue (39%)

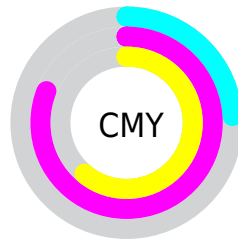


Cyan (0%)

Magenta (75%)

Yellow (48%)

Black (24%)



Cyan (24%)

Magenta (81%)

Yellow (61%)

Brightness & Saturation Gradients

These gradients show how the CIELCh color 45, 60.461, 5.062 changes by changing the brightness by 10 percent. The first figure shows a shift by +10% for each color and the second figure -10%.

Similar to the brightness gradients but the following saturation gradients show a change of the CIELCh color 45, 60.461, 5.062 by changing the saturation by 10% instead.


 45, 60.461, 5.062  45, 60.461, 5.062

 100, 60.461, 5.062  35, 60.461, 5.062

 65, 60.461, 5.062  25, 60.461, 5.062

 75, 60.461, 5.062  15, 60.461, 5.062

 85, 60.461, 5.062  5, 60.461, 5.062

 95, 60.461, 5.062  0, 60.461, 5.062

 45, 60.461, 5.062  45, 60.461, 5.062

 43, 65.206, 8.905  48, 54.224, 2.030

 42, 68.488, 13.674  52, 46.792,
359.629

 41, 69.893, 16.129

■ 56, 38.569,
357.700

■ 60, 29.945,
356.115

■ 65, 21.223,
354.783

■ 70, 12.609,
353.632

■ 76, 4.231, 352.571

■ 81, 3.845, 171.918

■ 87, 11.592,
171.056

Harmonies

Complementary

The Complementary color scheme is a pair of colors which are on the opposite of each other on the color wheel.



45, 60.461, 5.062



70, 52.258, 162.750

Rectangle

The Rectangle color scheme consists of four colors that form a rectangle on the color wheel.



45, 60.461, 5.062



45, 60.461, 55.062



45, 60.461, 185.062



45, 60.461, 235.062

Sweetspot

The Sweet Spot groups the original color and five complimentary colors.



45, 60.458, 5.064



84, 23.931, 354.561



41, 85.132, 316.263



43, 16.777, 355.015



0, 0.000, 0.000



53, 0.007, 296.813

Same Dimension

The Same Dimension uses a secret algorithm to generate beautiful new colors.



45, 60.458, 5.064



55, 82.122, 11.770



47, 62.845, 37.998



38, 4.655, 353.018



34, 60.568, 15.275



3, 14.858, 0.585

Inverse Universe

The Inverse Universe completely reimagines the original color for something new.



45, 60.458, 5.064



55, 82.122, 11.770



66, 33.410, 216.102



38, 4.655, 353.018



34, 60.568, 15.275



3, 14.858, 0.585

Previews

White Background



This preview shows how the CIELCh color 45, 60.461, 5.062 looks on a white background.

Color Contrast Check

Large Text (above 18pt) WCAG AA ✓ Pass

Any Text WCAG AA ✓ Pass

Large Text (above 18pt) WCAG AAA ✓ Pass

Any Text WCAG AAA × Fail

Black Background



This preview shows how the CIELCh color 45, 60.461, 5.062 looks on a black background.

Color Contrast Check

Large Text (above 18pt) WCAG AA ✓ Pass

Any Text WCAG AA × Fail

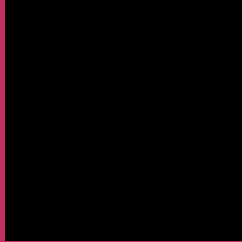
Large Text (above 18pt) WCAG AAA × Fail

Any Text WCAG AAA × Fail

If you want to check with other color combinations, try the [Color Contrast Checker](#).

CIELCh 45, 60.461, 5.062

Background



This preview shows how black text looks on a background with the CIELCh color 45, 60.461, 5.062.



This preview shows how white text looks on a background with the CIELCh color 45, 60.461, 5.062.

Color Blindness Simulation

Color vision deficiency is a very complex topic, and I could not describe the different causes any better than Wikipedia does, so if you want to learn more, you should check out their [article about color blindness](#).

Dichromacy



Original Color

45, 60.461, 5.062

Protanopia

45, 16.157, 285.914

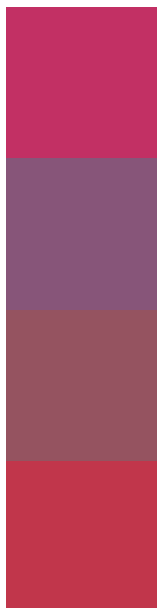
Deuteranopia

45, 10.650, 53.896



Tritanopia
45, 60.865, 28.791

Trichromacy



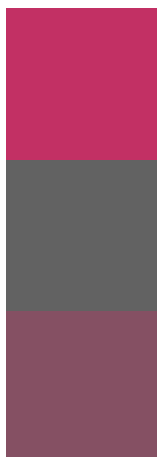
Original Color
45, 60.461, 5.062

Protanomaly
43, 29.020, 336.062

Deuteranomaly
43, 29.354, 9.023

Tritanomaly
45, 59.692, 20.313

Monochromacy



Original Color
45, 60.461, 5.062

Achromatopsia
42, 0.006, 296.813

Achromatomaly
41, 24.982, 356.451

CSS Examples

Text

The CSS property to change the color of the text to CIELCh 45, 60.461, 5.062 is called "color". The color property can be set on classes, ids or directly on the HTML element.

This example shows how text in the color `rgb(194, 48, 100)` looks like.

```
.text, #text, p{  
    color:rgb(194, 48, 100)  
}
```

If you want to add a text shadow in that color use the text-shadow property, you can generate a text shadow directly with our [CSS Text Shadow Generator](#).

Here you see how black text with a 4 pixel rgb(194, 48, 100) colored shadow looks like.

```
.shadow{ text-shadow: 4px 4px 2px rgb(194, 48, 100) }
```

Border

The CSS property to change the border of an element to CIELCh 45, 60.461, 5.062 is called "border". The border property can be set on classes, ids or directly on the HTML element.

This example shows the color as border, it can be applied via the CSS property "border" or "border-color".

```
.border, #border, table{ border:4px solid rgb(194, 48, 100) }
```

If only the border color should be changed use the property border-color.

```
.border{ border-color:rgb(194, 48, 100) }
```

If you want to add a box shadow in that color use:

Here you see how a box with a 4 pixel rgb(194, 48, 100) colored shadow looks like.

```
.boxshadow{ -moz-box-shadow:4px 4px 4px  
4px rgb(194, 48, 100); -webkit-box-  
shadow:4px 4px 4px 4px rgb(194, 48, 100);  
box-shadow:4px 4px 4px 4px rgb(194, 48,  
100) }
```

Background

The CSS property to change the background color of an element to CIELCh 45, 60.461, 5.062 is called "background". The background property can be set on classes, ids or directly on the HTML element.

```
.background, #background, body{  
background: rgb(194, 48, 100) }
```

If only the background color should be changed can be used:

```
.background{ background-color: rgb(194, 48,  
100) }
```

This example shows the color as background, it is applied via the CSS property "background".

To optimize and compress your CSS code, you can use our [online CSS compressor and optimizer](#) based on csstidy. If you want to create a linear or radial gradient as background or border, check our [CSS Gradient Generator](#).

Hey! You found this booklet interesting? Support Converting Colors with the new Membership Option!

The pro membership hides all ads, plus gives you double the colors in the color bucket, and more awesome pro features!

[Learn more, Memberships starting at \\$2.50/m!](#)

**Follow me
on Twitter!**

@ConvertingColor