

Converting Colors

CIELCh(46, 10.316, 20.761)

Have a look what the booklet for
CIELCh(46, 10.316, 20.761) contains.

CIELCh(46, 10.235, 20.659)	3
<i>Conversions</i>	4
<i>Details</i>	6
<i>Harmonies</i>	11
<i>Previews</i>	20
<i>Color Blindness Simulation</i>	23
<i>CSS Examples</i>	26

Color

CIELCh(46, 10.235, 20.659)

Conversions

Conversions Part 1

Format	Color
Hex	7F6767
RGB	127, 103, 103
RGB Percent	50%, 40%, 40%
CMY	0.5009, 0.5951, 0.5951
CMYK	0.00, 0.19, 0.19, 0.50
HSL	0°, 10%, 45%
HSV	0°, 19%, 50%
XYZ	16.1292, 15.2687, 14.9965
YIQ	110.1760, 14.3040, 5.0880

Conversions

Conversions Part 2

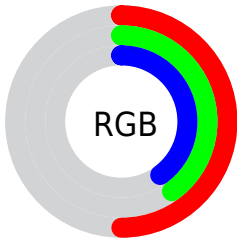
Format	Color
R_{YB}	127, 103, 103
Decimal	8349543
CIE _{Lab}	46.00, 9.58, 3.61
CIE _{LCh}	46, 10.235, 20.659
Yxy	15.2687, 0.3477, 0.3291
Android (android.graphics.Color)	4286539623 (0xFF7F6767)
YUV	110.1760, -3.5378, 14.7546
Hunter-Lab	39.0751, 5.2986, 4.5979

Details

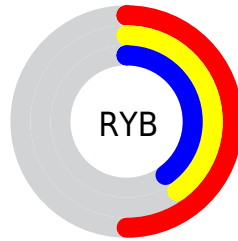
The CIELCh color **46, 10.235, 20.659** is a dark color, and the websafe version is hex **666666**. A complement of this color would be **51, 9.094, 198.504**, and the grayscale version is **47, 0.006, 296.813**.

A 20% lighter version of the original color is **66, 10.246, 20.323**, and **26, 10.023, 21.293** is the 20% darker color. If you saturate the color by 10%, you get **42, 16.248, 21.648**, and if you desaturate by 10%, it is **50, 4.631, 19.867**.

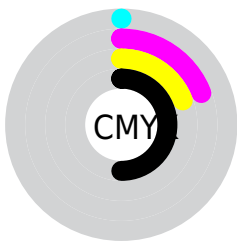
Distribution



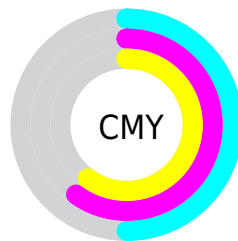
- Red (50%)
- Green (40%)
- Blue (40%)



- Red (50%)
- Yellow (40%)
- Blue (40%)



- Cyan (0%)
- Magenta (19%)
- Yellow (19%)
- Black (50%)



- Cyan (50%)
- Magenta (60%)
- Yellow (60%)

Brightness & Saturation Gradients

These gradients show how the CIELCh color 46, 10.235, 20.659 changes by changing the brightness by 10 percent. The first figure shows a shift by +10% for each color and the second figure -10%.

Similar to the brightness gradients but the following saturation gradients show a change of the CIELCh color 46, 10.235, 20.659 by changing the saturation by 10% instead.

■ 46, 10.235, 20.659

■ 46, 10.235, 20.659

■ 100, 10.235,
20.659

■ 36, 10.235, 20.659

■ 66, 10.235, 20.659

■ 26, 10.235, 20.659

■ 76, 10.235, 20.659

■ 16, 10.235, 20.659

■ 86, 10.235, 20.659

■ 6, 10.235, 20.659

■ 96, 10.235, 20.659

■ 0, 10.235, 20.659

■ 46, 10.235, 20.659

■ 46, 10.235, 20.659

■ 42, 16.248, 21.648

■ 50, 4.631, 19.867

■ 39, 22.652, 22.906

■ 54, 0.569, 200.058

35, 29.380, 24.532

58, 5.391, 198.967

32, 36.308, 26.624

62, 9.870, 198.559

30, 43.254, 29.265

66, 14.041,
198.244

28, 49.965, 32.442

70, 17.941,
197.991

26, 56.022, 35.857

25, 60.508, 38.117

74, 21.601,
197.783

25, 61.006, 38.334

78, 25.052,
197.612

82, 28.318,
197.468

Harmonies

Complementary

The Complementary color scheme is a pair of colors which are on the opposite of each other on the color wheel.



46, 10.235, 20.659



51, 9.094, 198.504

Rectangle

The Rectangle color scheme consists of four colors that form a rectangle on the color wheel.



46, 10.235, 20.659



46, 10.235, 70.659



46, 10.235, 200.659



46, 10.235, 250.659

Sweetspot

The Sweet Spot groups the original color and five complimentary colors.



46, 10.234, 20.667



65, 3.850, 19.653



47, 17.121, 325.422



34, 2.578, 19.696



85, 0.010, 296.813



36, 0.005, 296.813

Same Dimension

The Same Dimension uses a secret algorithm to generate beautiful new colors.



46, 10.234, 20.667



57, 15.757, 21.097



49, 8.698, 73.168



25, 2.951, 19.885



25, 61.099, 38.349



0, 0.000, 0.000

Inverse Universe

The Inverse Universe completely reimagines the original color for something new.



51, 9.094, 198.504



65, 13.561, 198.280



48, 8.298, 257.991



26, 2.793, 199.028



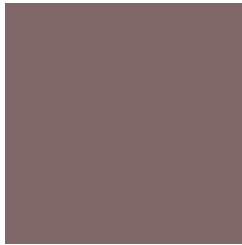
48, 29.972, 196.406



0, 0.000, 0.000

Previews

White Background



This preview shows how the CIELCh color 46, 10.235, 20.659 looks on a white background.

Color Contrast Check

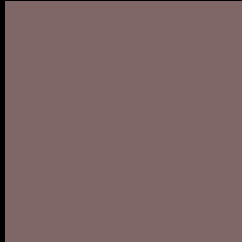
Large Text (above 18pt) WCAG AA ✓ Pass

Any Text WCAG AA ✓ Pass

Large Text (above 18pt) WCAG AAA ✓ Pass

Any Text WCAG AAA × Fail

Black Background



This preview shows how the CIE LCh color 46, 10.235, 20.659 looks on a black background.

Color Contrast Check

Large Text (above 18pt) WCAG AA ✓ Pass

Any Text WCAG AA × Fail

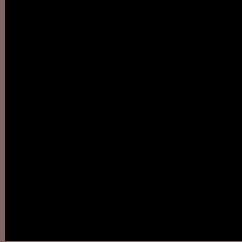
Large Text (above 18pt) WCAG AAA × Fail

Any Text WCAG AAA × Fail

If you want to check with other color combinations, try the [Color Contrast Checker](#).

CIELCh 46, 10.235, 20.659

Background



This preview shows how black text looks on a background with the CIELCh color 46, 10.235, 20.659.



This preview shows how white text looks on a background with the CIELCh color 46, 10.235, 20.659.

Color Blindness Simulation

Color vision deficiency is a very complex topic, and I could not describe the different causes any better than Wikipedia does, so if you want to learn more, you should check out their [article about color blindness](#).

Dichromacy



Original Color

46, 10.235, 20.659

Protanopia

46, 2.155, 74.695

Deuteranopia

46, 7.313, 29.497



Tritanopia
46, 11.811, 357.390

Trichromacy



Original Color
46, 10.235, 20.659

Protanomaly
46, 4.760, 34.225

Deuteranomaly
46, 8.528, 24.371

Tritanomaly
46, 11.457, 2.907

Monochromacy



Original Color
46, 10.235, 20.659

Achromatopsia
46, 0.006, 296.813

Achromatomaly
46, 3.313, 19.698

CSS Examples

Text

The CSS property to change the color of the text to CIELCh 46, 10.235, 20.659 is called "color". The color property can be set on classes, ids or directly on the HTML element.

This example shows how text in the color `rgb(127, 103, 103)` looks like.

```
.text, #text, p{  
    color:rgb(127, 103, 103)  
}
```

If you want to add a text shadow in that color use the text-shadow property, you can generate a text shadow directly with our [CSS Text Shadow Generator](#).

Here you see how black text with a 4 pixel rgb(127, 103, 103) colored shadow looks like.

```
.shadow{ text-shadow: 4px 4px 2px rgb(127, 103, 103) }
```

Border

The CSS property to change the border of an element to CIELCh 46, 10.235, 20.659 is called "border". The border property can be set on classes, ids or directly on the HTML element.

This example shows the color as border, it can be applied via the CSS property "border" or "border-color".

```
.border, #border, table{ border:4px solid rgb(127, 103, 103) }
```

If only the border color should be changed use the property `border-color`.

```
.border{ border-color:rgb(127, 103, 103) }
```

If you want to add a box shadow in that color use:

Here you see how a box with a 4 pixel `rgb(127, 103, 103)` colored shadow looks like.

```
.boxshadow{ -moz-box-shadow:4px 4px 4px  
4px rgb(127, 103, 103); -webkit-box-  
shadow:4px 4px 4px 4px rgb(127, 103, 103);  
box-shadow:4px 4px 4px 4px rgb(127, 103,  
103) }
```

Background

The CSS property to change the background color of an element to CIELCh 46, 10.235, 20.659 is called "background". The background property can be set on classes, ids or directly on the HTML element.

```
.background, #background, body{  
background: rgb(127, 103, 103) }
```

If only the background color should be changed can be used:

```
.background{ background-color: rgb(127,  
103, 103) }
```

This example shows the color as background, it is applied via the CSS property "background".

To optimize and compress your CSS code, you can use our [online CSS compressor and optimizer](#) based on csstidy. If you want to create a linear or radial gradient as background or border, check our [CSS Gradient Generator](#).

Hey! You found this booklet interesting? Support Converting Colors with the new Membership Option!

The pro membership hides all ads, plus gives you double the colors in the color bucket, and more awesome pro features!

[Learn more, Memberships starting at \\$2.50/m!](#)

**Follow me
on Twitter!**

@ConvertingColor