

Converting Colors

CIELCh(46, 68.520, 5.426)

Have a look what the booklet for
CIELCh(46, 68.520, 5.426) contains.

CIELCh(46, 68.486, 5.355)	3
<i>Conversions</i>	4
<i>Details</i>	6
<i>Harmonies</i>	11
<i>Previews</i>	20
<i>Color Blindness Simulation</i>	23
<i>CSS Examples</i>	26

Color

CIELCh(46, 68.486, 5.355)

Conversions

Conversions Part 1

Format	Color
Hex	CF2065
RGB	207, 32, 101
RGB Percent	81%, 13%, 40%
CMY	0.1869, 0.8763, 0.6028
CMYK	0.00, 0.85, 0.51, 0.19
HSL	336°, 74%, 47%
HSV	336°, 85%, 81%
XYZ	28.6965, 15.2687, 13.8176
YIQ	92.1910, 82.1510, 58.5590

Conversions

Conversions Part 2

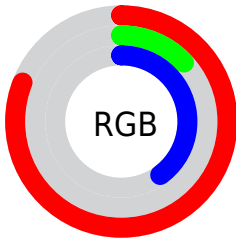
Format	Color
R_{YB}	207, 32, 101
Decimal	13574245
CIE _{Lab}	46.00, 68.19, 6.39
CIE _{LCh}	46, 68.486, 5.355
Yxy	15.2687, 0.4966, 0.2642
Android (android.graphics.Color)	4291764325 (0xFFCF2065)
YUV	92.1910, 4.3428, 100.6875
Hunter-Lab	39.0751, 62.7074, 6.3867

Details

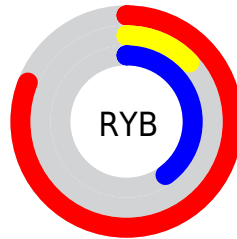
The CIELCh color **46, 68.486, 5.355** is a dark color, and the websafe version is hex **CC0066**. The color can be described as dark muted rose. A complement of this color would be **74, 62.133, 158.147**, and the grayscale version is **39, 0.006, 296.813**.

A 20% lighter version of the original color is **64, 63.745, 2.464**, and **30, 56.100, 12.816** is the 20% darker color. If you saturate the color by 10%, you get **45, 71.447, 9.864**, and if you desaturate by 10%, it is **48, 63.803, 1.760**.

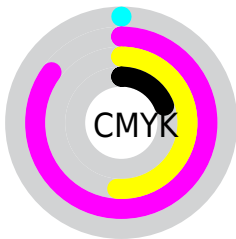
Distribution



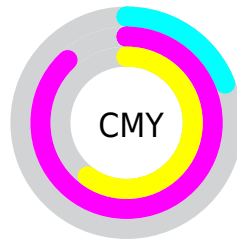
- Red (81%)
- Green (13%)
- Blue (40%)



- Red (81%)
- Yellow (13%)
- Blue (40%)



- Cyan (0%)
- Magenta (85%)
- Yellow (51%)
- Black (19%)



- Cyan (19%)
- Magenta (88%)
- Yellow (60%)

Brightness & Saturation Gradients

These gradients show how the CIELCh color 46, 68.486, 5.355 changes by changing the brightness by 10 percent. The first figure shows a shift by +10% for each color and the second figure -10%.


Similar to the brightness gradients but the following saturation gradients show a change of the CIELCh color 46, 68.486, 5.355 by changing the saturation by 10% instead.

 46, 68.486, 5.355  46, 68.486, 5.355

 100, 68.486, 5.355  36, 68.486, 5.355

 66, 68.486, 5.355  26, 68.486, 5.355


 76, 68.486, 5.355  16, 68.486, 5.355

 86, 68.486, 5.355  6, 68.486, 5.355

 96, 68.486, 5.355  0, 68.486, 5.355

 46, 68.486, 5.355  46, 68.486, 5.355

 45, 71.447, 9.864  48, 63.803, 1.760

 44, 72.672, 12.449  51, 57.416,
358.927

■ 55, 49.655,
356.680

■ 60, 40.976,
354.864

■ 64, 31.808,
353.361

■ 70, 22.487,
352.086

■ 75, 13.244,
350.975

■ 81, 4.222, 349.939

■ 86, 4.502, 169.290

Harmonies

Complementary

The Complementary color scheme is a pair of colors which are on the opposite of each other on the color wheel.



46, 68.486, 5.355



74, 62.133, 158.147

Rectangle

The Rectangle color scheme consists of four colors that form a rectangle on the color wheel.



46, 68.486, 5.355



46, 68.486, 55.355



46, 68.486, 185.355



46, 68.486, 235.355

Sweetspot

The Sweet Spot groups the original color and five complimentary colors.



46, 68.482, 5.357



84, 26.841, 352.147



39, 97.478, 315.155



42, 18.374, 352.581



0, 0.000, 0.000



53, 0.007, 296.813

Same Dimension

The Same Dimension uses a secret algorithm to generate beautiful new colors.



46, 68.482, 5.357



54, 85.070, 13.153



46, 76.871, 38.521



41, 5.075, 350.423



36, 62.119, 11.595



5, 20.974, 0.313

Inverse Universe

The Inverse Universe completely reimagines the original color for something new.



46, 68.482, 5.357



54, 85.070, 13.153



71, 37.367, 211.906



41, 5.075, 350.423



36, 62.119, 11.595



5, 20.974, 0.313

Previews

White Background



This preview shows how the CIELCh color 46, 68.486, 5.355 looks on a white background.

Color Contrast Check

Large Text (above 18pt) WCAG AA ✓ Pass

Any Text WCAG AA ✓ Pass

Large Text (above 18pt) WCAG AAA ✓ Pass

Any Text WCAG AAA × Fail

Black Background



This preview shows how the CIELCh color 46, 68.486, 5.355 looks on a black background.

Color Contrast Check

Large Text (above 18pt) WCAG AA ✓ Pass

Any Text WCAG AA × Fail

Large Text (above 18pt) WCAG AAA × Fail

Any Text WCAG AAA × Fail

If you want to check with other color combinations, try the [Color Contrast Checker](#).

CIELCh 46, 68.486, 5.355

Background



This preview shows how black text looks on a background with the CIELCh color 46, 68.486, 5.355.



This preview shows how white text looks on a background with the CIELCh color 46, 68.486, 5.355.

Color Blindness Simulation

Color vision deficiency is a very complex topic, and I could not describe the different causes any better than Wikipedia does, so if you want to learn more, you should check out their [article about color blindness](#).

Dichromacy



Original Color

46, 68.290, 5.457

Protanopia

47, 19.658, 285.577

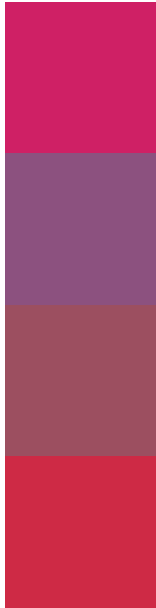
Deuteranopia

46, 12.098, 59.295



Tritanopia
46, 71.082, 31.896

Trichromacy



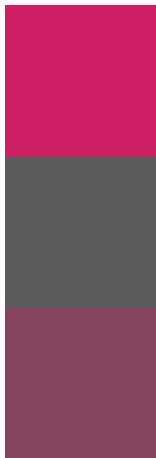
Original Color
46, 68.290, 5.457

Protanomaly
43, 35.252, 334.000

Deuteranomaly
44, 34.209, 8.256

Tritanomaly
46, 68.436, 22.477

Monochromacy



Original Color
46, 68.290, 5.457

Achromatopsia
39, 0.006, 296.813

Achromatomaly
38, 30.513, 355.501

CSS Examples

Text

The CSS property to change the color of the text to CIELCh 46, 68.486, 5.355 is called "color". The color property can be set on classes, ids or directly on the HTML element.

This example shows how text in the color `rgb(207, 32, 101)` looks like.

```
.text, #text, p{  
    color:rgb(207, 32, 101)  
}
```

If you want to add a text shadow in that color use the text-shadow property, you can generate a text shadow directly with our [CSS Text Shadow Generator](#).

Here you see how black text with a 4 pixel rgb(207, 32, 101) colored shadow looks like.

```
.shadow{ text-shadow: 4px 4px 2px rgb(207, 32, 101) }
```

Border

The CSS property to change the border of an element to CIELCh 46, 68.486, 5.355 is called "border". The border property can be set on classes, ids or directly on the HTML element.

This example shows the color as border, it can be applied via the CSS property "border" or "border-color".

```
.border, #border, table{ border:4px solid rgb(207, 32, 101) }
```

If only the border color should be changed use the property `border-color`.

```
.border{ border-color:rgb(207, 32, 101) }
```

If you want to add a box shadow in that color use:

Here you see how a box with a 4 pixel `rgb(207, 32, 101)` colored shadow looks like.

```
.boxshadow{ -moz-box-shadow:4px 4px 4px  
4px rgb(207, 32, 101); -webkit-box-  
shadow:4px 4px 4px 4px rgb(207, 32, 101);  
box-shadow:4px 4px 4px 4px rgb(207, 32,  
101) }
```

Background

The CSS property to change the background color of an element to CIELCh 46, 68.486, 5.355 is called "background". The background property can be set on classes, ids or directly on the HTML element.

```
.background, #background, body{  
background: rgb(207, 32, 101) }
```

If only the background color should be changed can be used:

```
.background{ background-color: rgb(207, 32,  
101) }
```

This example shows the color as background, it is applied via the CSS property "background".

To optimize and compress your CSS code, you can use our [online CSS compressor and optimizer](#) based on csstidy. If you want to create a linear or radial gradient as background or border, check our [CSS Gradient Generator](#).

Hey! You found this booklet interesting? Support Converting Colors with the new Membership Option!

The pro membership hides all ads, plus gives you double the colors in the color bucket, and more awesome pro features!

[Learn more, Memberships starting at \\$2.50/m!](#)

**Follow me
on Twitter!**

@ConvertingColor