

Converting Colors

CIELCh(47, 63.599, 7.455)

Have a look what the booklet for
CIELCh(47, 63.599, 7.455) contains.

CIELCh(47, 63.569, 7.846)	3
<i>Conversions</i>	4
<i>Details</i>	6
<i>Harmonies</i>	11
<i>Previews</i>	20
<i>Color Blindness Simulation</i>	23
<i>CSS Examples</i>	26

Color

CIELCh(47, 63.569, 7.846)

Conversions

Conversions Part 1

Format	Color
Hex	CD3164
RGB	205, 49, 100
RGB Percent	80%, 19%, 39%
CMY	0.1973, 0.8091, 0.6088
CMYK	0.00, 0.76, 0.51, 0.20
HSL	340°, 62%, 50%
HSV	340°, 76%, 80%
XYZ	28.4654, 16.0195, 13.5870
YIQ	101.4580, 76.6050, 48.9330

Conversions

Conversions Part 2

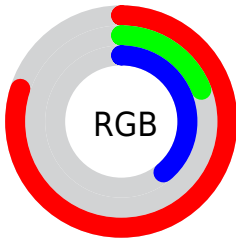
Format	Color
R _{YB}	205, 49, 100
Decimal	13447524
CIE Lab	47.00, 62.97, 8.68
CIE LCh	47, 63.569, 7.846
Yxy	16.0195, 0.4902, 0.2759
Android (android.graphics.Color)	4291637604 (0xFFCD3164)
YUV	101.4580, -0.7188, 90.8063
Hunter-Lab	40.0243, 56.9069, 7.8899

Details

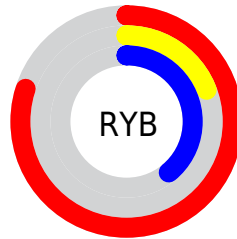
The CIELCh color **47, 63.569, 7.846** is a dark color, and the websafe version is hex **CC3366**. The color can be described as dark muted rose. A complement of this color would be **74, 53.396, 164.472**, and the grayscale version is **43, 0.006, 296.813**.

A 20% lighter version of the original color is **65, 59.527, 5.406**, and **30, 55.867, 13.187** is the 20% darker color. If you saturate the color by 10%, you get **45, 68.593, 11.980**, and if you desaturate by 10%, it is **50, 57.063, 4.574**.

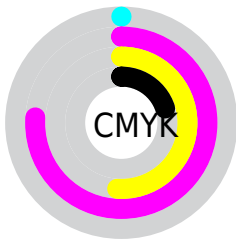
Distribution



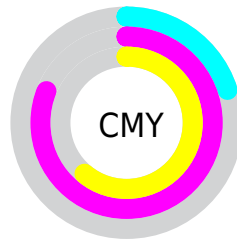
- Red (80%)
- Green (19%)
- Blue (39%)



- Red (80%)
- Yellow (19%)
- Blue (39%)



- Cyan (0%)
- Magenta (76%)
- Yellow (51%)
- Black (20%)



- Cyan (20%)
- Magenta (81%)
- Yellow (61%)

Brightness & Saturation Gradients


These gradients show how the CIELCh color 47, 63.569, 7.846 changes by changing the brightness by 10 percent. The first figure shows a shift by +10% for each color and the second figure -10%.

Similar to the brightness gradients but the following saturation gradients show a change of the CIELCh color 47, 63.569, 7.846 by changing the saturation by 10% instead.

 47, 63.569, 7.846  47, 63.569, 7.846

 100, 63.569, 7.846  37, 63.569, 7.846

 67, 63.569, 7.846  27, 63.569, 7.846


 77, 63.569, 7.846  17, 63.569, 7.846

 87, 63.569, 7.846  7, 63.569, 7.846

 97, 63.569, 7.846  0, 63.569, 7.846

 47, 63.569, 7.846  47, 63.569, 7.846

 45, 68.593, 11.980  50, 57.063, 4.574

 44, 72.243, 17.037  54, 49.338, 1.990

 43, 73.548, 19.027  58, 40.798,

359.927

63, 31.846,
358.248

68, 22.802,
356.848

73, 13.885,
355.651

79, 5.228, 354.571

84, 3.099, 173.916

90, 11.071,
173.006

Harmonies

Complementary

The Complementary color scheme is a pair of colors which are on the opposite of each other on the color wheel.



47, 63.569, 7.846



74, 53.396, 164.472

Rectangle

The Rectangle color scheme consists of four colors that form a rectangle on the color wheel.



47, 63.569, 7.846



47, 63.569, 57.846



47, 63.569, 187.846



47, 63.569, 237.846

Sweetspot

The Sweet Spot groups the original color and five complimentary colors.



47, 63.566, 7.848



85, 23.804, 356.480



43, 89.519, 317.242



43, 16.562, 356.943



0, 0.000, 0.000



53, 0.007, 296.813

Same Dimension

The Same Dimension uses a secret algorithm to generate beautiful new colors.



47, 63.566, 7.848



55, 83.669, 14.882



50, 65.516, 40.029



40, 4.781, 354.912



35, 62.616, 18.091



4, 18.675, 3.502

Inverse Universe

The Inverse Universe completely reimagines the original color for something new.



47, 63.566, 7.848



55, 83.669, 14.882



67, 34.482, 222.044



40, 4.781, 354.912



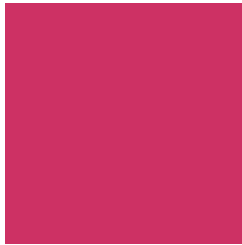
35, 62.616, 18.091



4, 18.675, 3.502

Previews

White Background



This preview shows how the CIELCh color 47, 63.569, 7.846 looks on a white background.

Color Contrast Check

Large Text (above 18pt) WCAG AA ✓ Pass

Any Text WCAG AA ✓ Pass

Large Text (above 18pt) WCAG AAA ✓ Pass

Any Text WCAG AAA × Fail

Black Background



This preview shows how the CIE LCh color 47, 63.569, 7.846 looks on a black background.

Color Contrast Check

Large Text (above 18pt) WCAG AA ✓ Pass

Any Text WCAG AA × Fail

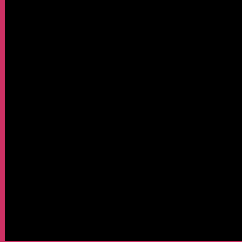
Large Text (above 18pt) WCAG AAA × Fail

Any Text WCAG AAA × Fail

If you want to check with other color combinations, try the [Color Contrast Checker](#).

CIELCh 47, 63.569, 7.846

Background



This preview shows how black text looks on a background with the CIELCh color 47, 63.569, 7.846.

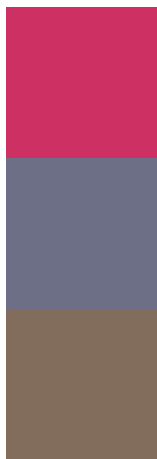


This preview shows how white text looks on a background with the CIELCh color 47, 63.569, 7.846.

Color Blindness Simulation

Color vision deficiency is a very complex topic, and I could not describe the different causes any better than Wikipedia does, so if you want to learn more, you should check out their [article about color blindness](#).

Dichromacy



Original Color

47, 63.569, 7.846

Protanopia

47, 13.040, 287.007

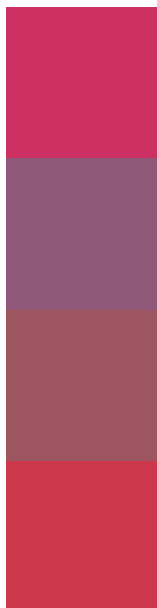
Deuteranopia

47, 13.651, 63.400



Tritanopia
47, 65.335, 29.543

Trichromacy



Original Color
47, 63.569, 7.846

Protanomaly
45, 29.156, 341.821

Deuteranomaly
45, 31.299, 14.573

Tritanomaly
47, 63.639, 22.080

Monochromacy



Original Color
47, 63.569, 7.846

Achromatopsia
43, 0.006, 296.813

Achromatomaly
42, 26.412, 358.397

CSS Examples

Text

The CSS property to change the color of the text to CIELCh 47, 63.569, 7.846 is called "color". The color property can be set on classes, ids or directly on the HTML element.

This example shows how text in the color `rgb(205, 49, 100)` looks like.

```
.text, #text, p{  
    color:rgb(205, 49, 100)  
}
```

If you want to add a text shadow in that color use the text-shadow property, you can generate a text shadow directly with our [CSS Text Shadow Generator](#).

Here you see how black text with a 4 pixel rgb(205, 49, 100) colored shadow looks like.

```
.shadow{ text-shadow: 4px 4px 2px rgb(205, 49, 100) }
```

Border

The CSS property to change the border of an element to CIELCh 47, 63.569, 7.846 is called "border". The border property can be set on classes, ids or directly on the HTML element.

This example shows the color as border, it can be applied via the CSS property "border" or "border-color".

```
.border, #border, table{ border:4px solid rgb(205, 49, 100) }
```

If only the border color should be changed use the property `border-color`.

```
.border{ border-color:rgb(205, 49, 100) }
```

If you want to add a box shadow in that color use:

Here you see how a box with a 4 pixel `rgb(205, 49, 100)` colored shadow looks like.

```
.boxshadow{ -moz-box-shadow:4px 4px 4px  
4px rgb(205, 49, 100); -webkit-box-  
shadow:4px 4px 4px 4px rgb(205, 49, 100);  
box-shadow:4px 4px 4px 4px rgb(205, 49,  
100) }
```

Background

The CSS property to change the background color of an element to CIELCh 47, 63.569, 7.846 is called "background". The background property can be set on classes, ids or directly on the HTML element.

```
.background, #background, body{  
background: rgb(205, 49, 100) }
```

If only the background color should be changed can be used:

```
.background{ background-color: rgb(205, 49,  
100) }
```

This example shows the color as background, it is applied via the CSS property "background".

To optimize and compress your CSS code, you can use our [online CSS compressor and optimizer](#) based on csstidy. If you want to create a linear or radial gradient as background or border, check our [CSS Gradient Generator](#).

Hey! You found this booklet interesting? Support Converting Colors with the new Membership Option!

The pro membership hides all ads, plus gives you double the colors in the color bucket, and more awesome pro features!

[Learn more, Memberships starting at \\$2.50/m!](#)

**Follow me
on Twitter!**

@ConvertingColor