

Converting Colors

CIELCh(47, 66.438, 4.875)

Have a look what the booklet for
CIELCh(47, 66.438, 4.875) contains.

CIELCh(47, 66.426, 4.888)	3
<i>Conversions</i>	4
<i>Details</i>	6
<i>Harmonies</i>	11
<i>Previews</i>	20
<i>Color Blindness Simulation</i>	23
<i>CSS Examples</i>	26

Color

CIELCh(47, 66.426, 4.888)

Conversions

Conversions Part 1

Format	Color
Hex	D02A69
RGB	208, 42, 105
RGB Percent	82%, 16%, 41%
CMY	0.1854, 0.8365, 0.5891
CMYK	0.00, 0.80, 0.50, 0.19
HSL	337°, 67%, 49%
HSV	337°, 80%, 81%
XYZ	29.2928, 16.0195, 14.8554
YIQ	98.8160, 78.7130, 54.7850

Conversions

Conversions Part 2

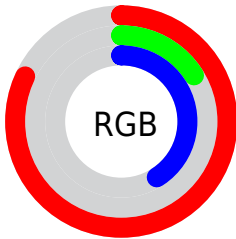
Format	Color
R_{YB}	208, 42, 105
Decimal	13642345
CIE _{Lab}	47.00, 66.18, 5.66
CIE _{LCh}	47, 66.426, 4.888
Yxy	16.0195, 0.4869, 0.2662
Android (android.graphics.Color)	4291832425 (0xFFD02A69)
YUV	98.8160, 3.0487, 95.7544
Hunter-Lab	40.0243, 60.5972, 6.0110

Details

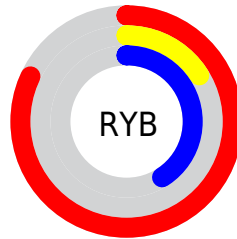
The CIELCh color **47, 66.426, 4.888** is a dark color, and the websafe version is hex **CC3366**. The color can be described as dark washed rose. A complement of this color would be **75, 58.889, 160.188**, and the grayscale version is **42, 0.006, 296.813**.

A 20% lighter version of the original color is **65, 61.570, 1.847**, and **31, 56.200, 11.152** is the 20% darker color. If you saturate the color by 10%, you get **45, 70.358, 9.062**, and if you desaturate by 10%, it is **50, 60.779, 1.586**.

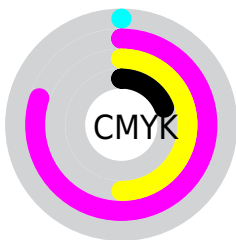
Distribution



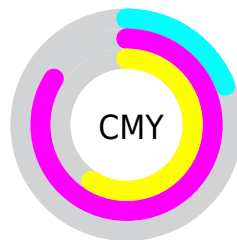
- Red (82%)
- Green (16%)
- Blue (41%)



- Red (82%)
- Yellow (16%)
- Blue (41%)



- Cyan (0%)
- Magenta (80%)
- Yellow (50%)
- Black (19%)



- Cyan (19%)
- Magenta (84%)
- Yellow (59%)

Brightness & Saturation Gradients

These gradients show how the CIELCh color 47, 66.426, 4.888 changes by changing the brightness by 10 percent. The first figure shows a shift by +10% for each color and the second figure -10%.

Similar to the brightness gradients but the following saturation gradients show a change of the CIELCh color 47, 66.426, 4.888 by changing the saturation by 10% instead.

 47, 66.426, 4.888  47, 66.426, 4.888

 100, 66.426, 4.888  37, 66.426, 4.888

 67, 66.426, 4.888  27, 66.426, 4.888

 77, 66.426, 4.888  17, 66.426, 4.888

 87, 66.426, 4.888  7, 66.426, 4.888

 97, 66.426, 4.888  0, 66.426, 4.888

 47, 66.426, 4.888  47, 66.426, 4.888

 45, 70.358, 9.062  50, 60.779, 1.586

 44, 73.037, 14.038  53, 53.608,
358.983

 44, 73.055, 14.071

57, 45.317,
356.905

62, 36.356,
355.212

67, 27.106,
353.799

72, 17.847,
352.591

78, 8.760, 351.522

83, 0.051, 179.694

89, 8.534, 169.889

Harmonies

Complementary

The Complementary color scheme is a pair of colors which are on the opposite of each other on the color wheel.



47, 66.426, 4.888



75, 58.889, 160.188

Rectangle

The Rectangle color scheme consists of four colors that form a rectangle on the color wheel.



47, 66.426, 4.888



47, 66.426, 54.888



47, 66.426, 184.888



47, 66.426, 234.888

Sweetspot

The Sweet Spot groups the original color and five complimentary colors.



47, 66.423, 4.890



84, 25.517, 353.095



41, 93.922, 315.736



43, 17.599, 353.538



0, 0.000, 0.000



53, 0.007, 296.813

Same Dimension

The Same Dimension uses a secret algorithm to generate beautiful new colors.



47, 66.423, 4.890



55, 84.328, 12.653



48, 71.799, 38.166



41, 5.025, 351.468



35, 62.325, 13.192



5, 20.873, 1.268

Inverse Universe

The Inverse Universe completely reimagines the original color for something new.



47, 66.423, 4.890



55, 84.328, 12.653



70, 36.365, 214.070



41, 5.025, 351.468



35, 62.325, 13.192



5, 20.873, 1.268

Previews

White Background



This preview shows how the CIELCh color 47, 66.426, 4.888 looks on a white background.

Color Contrast Check

Large Text (above 18pt) WCAG AA ✓ Pass

Any Text WCAG AA ✓ Pass

Large Text (above 18pt) WCAG AAA ✓ Pass

Any Text WCAG AAA × Fail

Black Background



This preview shows how the CIELCh color 47, 66.426, 4.888 looks on a black background.

Color Contrast Check

Large Text (above 18pt) WCAG AA ✓ Pass

Any Text WCAG AA × Fail

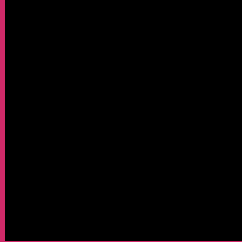
Large Text (above 18pt) WCAG AAA × Fail

Any Text WCAG AAA × Fail

If you want to check with other color combinations, try the [Color Contrast Checker](#).

CIELCh 47, 66.426, 4.888

Background



This preview shows how black text looks on a background with the CIELCh color 47, 66.426, 4.888.



This preview shows how white text looks on a background with the CIELCh color 47, 66.426, 4.888.

Color Blindness Simulation

Color vision deficiency is a very complex topic, and I could not describe the different causes any better than Wikipedia does, so if you want to learn more, you should check out their [article about color blindness](#).

Dichromacy



Original Color

47, 66.426, 4.888

Protanopia

47, 19.015, 285.191

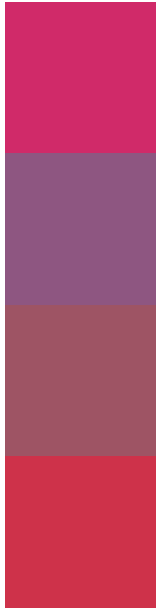
Deuteranopia

47, 11.275, 55.051



Tritanopia
47, 67.809, 30.641

Trichromacy



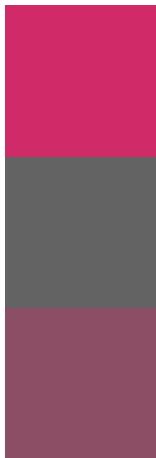
Original Color
47, 66.426, 4.888

Protanomaly
44, 33.200, 334.279

Deuteranomaly
45, 32.721, 8.099

Tritanomaly
47, 65.808, 21.668

Monochromacy



Original Color
47, 66.426, 4.888

Achromatopsia
42, 0.006, 296.813

Achromatomaly
41, 28.760, 355.828

CSS Examples

Text

The CSS property to change the color of the text to CIELCh 47, 66.426, 4.888 is called "color". The color property can be set on classes, ids or directly on the HTML element.

This example shows how text in the color `rgb(208, 42, 105)` looks like.

```
.text, #text, p{  
    color:rgb(208, 42, 105)  
}
```

If you want to add a text shadow in that color use the text-shadow property, you can generate a text shadow directly with our [CSS Text Shadow Generator](#).

Here you see how black text with a 4 pixel rgb(208, 42, 105) colored shadow looks like.

```
.shadow{ text-shadow: 4px 4px 2px rgb(208, 42, 105) }
```

Border

The CSS property to change the border of an element to CIELCh 47, 66.426, 4.888 is called "border". The border property can be set on classes, ids or directly on the HTML element.

This example shows the color as border, it can be applied via the CSS property "border" or "border-color".

```
.border, #border, table{ border:4px solid rgb(208, 42, 105) }
```

If only the border color should be changed use the property `border-color`.

```
.border{ border-color:rgb(208, 42, 105) }
```

If you want to add a box shadow in that color use:

Here you see how a box with a 4 pixel `rgb(208, 42, 105)` colored shadow looks like.

```
.boxshadow{ -moz-box-shadow:4px 4px 4px  
4px rgb(208, 42, 105); -webkit-box-  
shadow:4px 4px 4px 4px rgb(208, 42, 105);  
box-shadow:4px 4px 4px 4px rgb(208, 42,  
105) }
```

Background

The CSS property to change the background color of an element to CIELCh 47, 66.426, 4.888 is called "background". The background property can be set on classes, ids or directly on the HTML element.

```
.background, #background, body{  
background: rgb(208, 42, 105) }
```

If only the background color should be changed can be used:

```
.background{ background-color: rgb(208, 42,  
105) }
```

This example shows the color as background, it is applied via the CSS property "background".

To optimize and compress your CSS code, you can use our [online CSS compressor and optimizer](#) based on csstidy. If you want to create a linear or radial gradient as background or border, check our [CSS Gradient Generator](#).

Hey! You found this booklet interesting? Support Converting Colors with the new Membership Option!

The pro membership hides all ads, plus gives you double the colors in the color bucket, and more awesome pro features!

[Learn more, Memberships starting at \\$2.50/m!](#)

**Follow me
on Twitter!**

@ConvertingColor