

Converting Colors

CIELCh(47, 9.868, 67.664)

Have a look what the booklet for
CIELCh(47, 9.868, 67.664) contains.

CIELCh(47, 10.097, 68.893)	3
<i>Conversions</i>	4
<i>Details</i>	6
<i>Harmonies</i>	11
<i>Previews</i>	20
<i>Color Blindness Simulation</i>	23
<i>CSS Examples</i>	26

Color

CIELCh(47, 10.097, 68.893)

Conversions

Conversions Part 1

Format	Color
Hex	7C6D60
RGB	124, 109, 96
RGB Percent	49%, 43%, 38%
CMY	0.5143, 0.5731, 0.6241
CMYK	0.00, 0.12, 0.23, 0.51
HSL	28°, 13%, 43%
HSV	28°, 23%, 49%
XYZ	15.8459, 16.0195, 13.2868
YIQ	112.0030, 13.1130, -0.8630

Conversions

Conversions Part 2

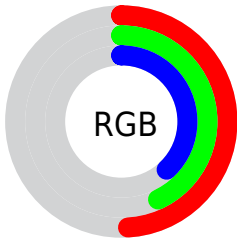
Format	Color
RYB	124, 120, 96
Decimal	8154464
CIELab	47.00, 3.64, 9.42
CIELCh	47, 10.097, 68.893
Yxy	16.0195, 0.3509, 0.3548
Android (android.graphics.Color)	4286344544 (0xFF7C6D60)
YUV	112.0030, -7.8895, 10.5214
Hunter-Lab	40.0243, 0.6267, 8.3347

Details

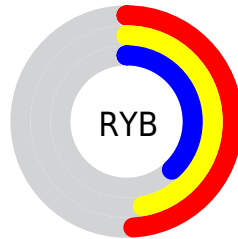
The CIELCh color **47, 10.097, 68.893** is a dark color, and the websafe version is hex **666666**. A complement of this color would be **46, 9.409, 254.530**, and the grayscale version is **47, 0.006, 296.813**.

A 20% lighter version of the original color is **67, 9.878, 65.990**, and **27, 10.125, 69.597** is the 20% darker color. If you saturate the color by 10%, you get **45, 14.945, 67.782**, and if you desaturate by 10%, it is **49, 5.488, 70.009**.

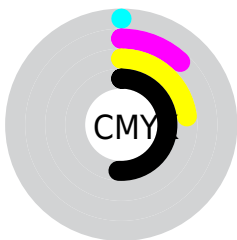
Distribution



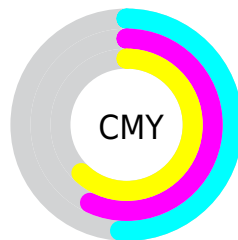
- Red (49%)
- Green (43%)
- Blue (38%)



- Red (49%)
- Yellow (47%)
- Blue (38%)



- Cyan (0%)
- Magenta (12%)
- Yellow (23%)
- Black (51%)



- Cyan (51%)
- Magenta (57%)
- Yellow (62%)

Brightness & Saturation Gradients

These gradients show how the CIELCh color 47, 10.097, 68.893 changes by changing the brightness by 10 percent. The first figure shows a shift by +10% for each color and the second figure -10%.

Similar to the brightness gradients but the following saturation gradients show a change of the CIELCh color 47, 10.097, 68.893 by changing the saturation by 10% instead.

■ 47, 10.097, 68.893

■ 47, 10.097, 68.893

■ 100, 10.097,
68.893

■ 37, 10.097, 68.893

■ 67, 10.097, 68.893

■ 27, 10.097, 68.893

■ 77, 10.097, 68.893

■ 17, 10.097, 68.893

■ 87, 10.097, 68.893

■ 7, 10.097, 68.893

■ 97, 10.097, 68.893

■ 0, 10.097, 68.893

■ 47, 10.097, 68.893

■ 47, 10.097, 68.893

■ 45, 14.945, 67.782

■ 49, 5.488, 70.009

■ 43, 20.040, 66.660

■ 51, 1.103, 70.926

41, 25.372, 65.542

54, 3.080, 252.371

39, 30.892, 64.412

56, 7.081, 253.398

37, 36.482, 63.227

58, 10.919,
254.432

35, 41.893, 61.880

60, 14.614,
255.440

34, 46.659, 60.155

32, 50.282, 59.143

63, 18.182,
256.414

65, 21.637,
257.351

67, 24.993,
258.249

Harmonies

Complementary

The Complementary color scheme is a pair of colors which are on the opposite of each other on the color wheel.



47, 10.097, 68.893



46, 9.409, 254.530

Rectangle

The Rectangle color scheme consists of four colors that form a rectangle on the color wheel.



47, 10.097, 68.893



47, 10.097, 118.893



47, 10.097, 248.893



47, 10.097, 298.893

Sweetspot

The Sweet Spot groups the original color and five complimentary colors.



47, 10.097, 68.903



64, 3.719, 70.579



44, 14.727, 342.857



33, 2.438, 70.536



84, 0.010, 296.813



35, 0.005, 296.813

Same Dimension

The Same Dimension uses a secret algorithm to generate beautiful new colors.



47, 10.097, 68.903



59, 15.118, 68.338



51, 15.375, 105.919



25, 2.407, 70.387



33, 50.627, 59.113



65, 86.368, 56.968

Inverse Universe

The Inverse Universe completely reimagines the original color for something new.



46, 9.409, 254.530



57, 13.838, 255.378



42, 16.084, 290.666



24, 2.349, 252.617



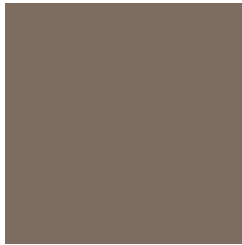
28, 38.406, 278.616



57, 67.916, 281.325

Previews

White Background



This preview shows how the CIELCh color 47, 10.097, 68.893 looks on a white background.

Color Contrast Check

Large Text (above 18pt) WCAG AA ✓ Pass

Any Text WCAG AA ✓ Pass

Large Text (above 18pt) WCAG AAA ✓ Pass

Any Text WCAG AAA × Fail

Black Background



This preview shows how the CIELCh color 47, 10.097, 68.893 looks on a black background.

Color Contrast Check

Large Text (above 18pt) WCAG AA ✓ Pass

Any Text WCAG AA × Fail

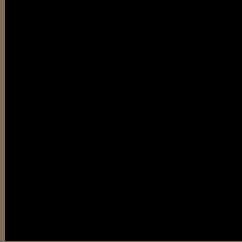
Large Text (above 18pt) WCAG AAA × Fail

Any Text WCAG AAA × Fail

If you want to check with other color combinations, try the [Color Contrast Checker](#).

CIELCh 47, 10.097, 68.893

Background



This preview shows how black text looks on a background with the CIELCh color 47, 10.097, 68.893.



This preview shows how white text looks on a background with the CIELCh color 47, 10.097, 68.893.

Color Blindness Simulation

Color vision deficiency is a very complex topic, and I could not describe the different causes any better than Wikipedia does, so if you want to learn more, you should check out their [article about color blindness](#).

Dichromacy



Original Color

47, 10.097, 68.893

Protanopia

47, 8.636, 91.677

Deuteranopia

47, 11.298, 55.039



Tritanopia
47, 9.493, 350.813

Trichromacy



Original Color
47, 10.097, 68.893

Protanomaly
47, 8.593, 82.300

Deuteranomaly
47, 10.614, 61.567

Tritanomaly
47, 7.568, 20.282

Monochromacy



Original Color
47, 10.097, 68.893

Achromatopsia
47, 0.006, 296.813

Achromatomaly
47, 3.598, 74.356

CSS Examples

Text

The CSS property to change the color of the text to CIELCh 47, 10.097, 68.893 is called "color". The color property can be set on classes, ids or directly on the HTML element.

This example shows how text in the color `rgb(124, 109, 96)` looks like.

```
.text, #text, p{  
    color:rgb(124, 109, 96)  
}
```

If you want to add a text shadow in that color use the text-shadow property, you can generate a text shadow directly with our [CSS Text Shadow Generator](#).

Here you see how black text with a 4 pixel rgb(124, 109, 96) colored shadow looks like.

```
.shadow{ text-shadow: 4px 4px 2px rgb(124, 109, 96) }
```

Border

The CSS property to change the border of an element to CIELCh 47, 10.097, 68.893 is called "border". The border property can be set on classes, ids or directly on the HTML element.

This example shows the color as border, it can be applied via the CSS property "border" or "border-color".

```
.border, #border, table{ border:4px solid rgb(124, 109, 96) }
```

If only the border color should be changed use the property border-color.

```
.border{ border-color:rgb(124, 109, 96) }
```

If you want to add a box shadow in that color use:

Here you see how a box with a 4 pixel rgb(124, 109, 96) colored shadow looks like.

```
.boxshadow{ -moz-box-shadow:4px 4px 4px  
4px rgb(124, 109, 96); -webkit-box-  
shadow:4px 4px 4px 4px rgb(124, 109, 96);  
box-shadow:4px 4px 4px 4px rgb(124, 109,  
96) }
```

Background

The CSS property to change the background color of an element to CIELCh 47, 10.097, 68.893 is called "background". The background property can be set on classes, ids or directly on the HTML element.

```
.background, #background, body{  
background: rgb(124, 109, 96) }
```

If only the background color should be changed can be used:

```
.background{ background-color: rgb(124,  
109, 96) }
```

This example shows the color as background, it is applied via the CSS property "background".

To optimize and compress your CSS code, you can use our [online CSS compressor and optimizer](#) based on csstidy. If you want to create a linear or radial gradient as background or border, check our [CSS Gradient Generator](#).

Hey! You found this booklet interesting? Support Converting Colors with the new Membership Option!

The pro membership hides all ads, plus gives you double the colors in the color bucket, and more awesome pro features!

[Learn more, Memberships starting at \\$2.50/m!](#)

**Follow me
on Twitter!**

@ConvertingColor