

# Converting Colors

CIELCh(48, 16.023, 58.422)

Have a look what the booklet for  
CIELCh(48, 16.023, 58.422) contains.

<b>CIELCh(48, 16.153, 58.235)</b> .....	3
<i><b>Conversions</b></i> .....	4
<i><b>Details</b></i> .....	6
<i><b>Harmonies</b></i> .....	11
<i><b>Previews</b></i> .....	20
<i><b>Color Blindness Simulation</b></i> .....	23
<i><b>CSS Examples</b></i> .....	26

# Color

**CIELCh(48, 16.153, 58.235)**

# Conversions

## Conversions Part 1

Format	Color
Hex	886C5B
RGB	136, 108, 91
RGB Percent	53%, 42%, 36%
CMY	0.4656, 0.5755, 0.6422
CMYK	0.00, 0.21, 0.33, 0.47
HSL	23°, 20%, 45%
HSV	23°, 33%, 53%
XYZ	17.4848, 16.7945, 12.2731
YIQ	114.4340, 22.1450, 0.6490

# Conversions

## Conversions Part 2

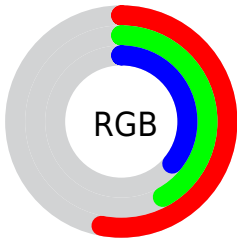
Format	Color
R <sub>Y</sub> B	136, 118, 91
Decimal	8940635
CIE Lab	48.00, 8.50, 13.73
CIE LCh	48, 16.153, 58.235
Yxy	16.7945, 0.3756, 0.3608
Android (android.graphics.Color)	4287130715 (0xFF886C5B)
YUV	114.4340, -11.5530, 18.9134
Hunter-Lab	40.9810, 4.4411, 10.9304

# Details

The CIELCh color  $48, 16.153, 58.235$  is a dark color, and the websafe version is hex  $996666$ . A complement of this color would be  $49, 13.795, 245.482$ , and the grayscale version is  $48, 0.006, 296.813$ .

A 20% lighter version of the original color is  $68, 16.176, 57.602$ , and  $28, 16.199, 59.661$  is the 20% darker color. If you saturate the color by 10%, you get  $45, 21.752, 57.444$ , and if you desaturate by 10%, it is  $51, 10.898, 59.084$ .

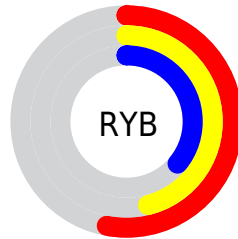
# Distribution



Red (53%)

Green (42%)

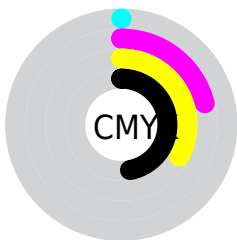
Blue (36%)



Red (53%)

Yellow (46%)

Blue (36%)

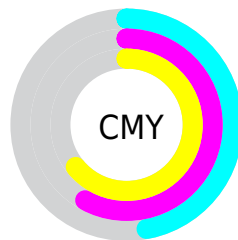


Cyan (0%)

Magenta (21%)

Yellow (33%)

Black (47%)



Cyan (47%)

Magenta (58%)

Yellow (64%)

# Brightness & Saturation Gradients

These gradients show how the CIELCh color 48, 16.153, 58.235 changes by changing the brightness by 10 percent. The first figure shows a shift by +10% for each color and the second figure -10%.

Similar to the brightness gradients but the following saturation gradients show a change of the CIELCh color 48, 16.153, 58.235 by changing the saturation by 10% instead.



■ 48, 16.153, 58.235

■ 48, 16.153, 58.235

■ 100, 16.153,  
58.235

■ 38, 16.153, 58.235

■ 68, 16.153, 58.235

■ 28, 16.153, 58.235

■ 78, 16.153, 58.235

■ 18, 16.153, 58.235

■ 88, 16.153, 58.235

■ 8, 16.153, 58.235

■ 98, 16.153, 58.235

■ 0, 16.153, 58.235

■ 48, 16.153, 58.235

■ 48, 16.153, 58.235

■ 45, 21.752, 57.444

■ 51, 10.898, 59.084

■ 43, 27.695, 56.698

■ 53, 5.972, 59.947

41, 33.940, 55.996

56, 1.346, 60.660

38, 40.369, 55.294

59, 3.008, 241.954

36, 46.706, 54.469

61, 7.119, 242.809

34, 52.395, 53.248

64, 11.017,  
243.705

33, 56.357, 52.659

67, 14.726,  
244.594

70, 18.269,  
245.464

73, 21.667,  
246.312

# Harmonies

# Complementary

The Complementary color scheme is a pair of colors which are on the opposite of each other on the color wheel.



48, 16.153, 58.235



49, 13.795, 245.482

# Rectangle

The Rectangle color scheme consists of four colors that form a rectangle on the color wheel.



48, 16.153, 58.235



48, 16.153, 108.235



48, 16.153, 238.235



48, 16.153, 288.235

# Sweetspot

The Sweet Spot groups the original color and five complimentary colors.



48, 16.153, 58.242



68, 5.592, 60.186



44, 24.655, 339.650



36, 3.860, 60.083



87, 0.010, 296.813



38, 0.005, 296.813



# Same Dimension

The Same Dimension uses a secret algorithm to generate beautiful new colors.



48, 16.153, 58.242



59, 24.729, 57.613



54, 22.355, 100.622



28, 2.574, 60.273



32, 55.162, 52.724



1, 1.166, 61.188





# Inverse Universe

The Inverse Universe completely reimagines the original color for something new.



49, 13.795, 245.482



60, 20.219, 246.966



42, 23.600, 288.505



28, 2.479, 242.200



34, 34.001, 267.625

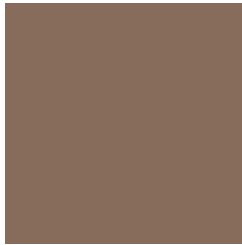


1, 1.166, 241.205



# Previews

## White Background



This preview shows how the CIELCh color 48, 16.153, 58.235 looks on a white background.

## Color Contrast Check

Large Text (above 18pt) WCAG AA ✓ Pass

Any Text WCAG AA ✓ Pass

Large Text (above 18pt) WCAG AAA ✓ Pass

Any Text WCAG AAA × Fail

# Black Background



This preview shows how the CIE LCh color 48, 16.153, 58.235 looks on a black background.

## Color Contrast Check

Large Text (above 18pt) WCAG AA ✓ Pass

Any Text WCAG AA × Fail

Large Text (above 18pt) WCAG AAA × Fail

Any Text WCAG AAA × Fail

If you want to check with other color combinations, try the [Color Contrast Checker](#).

# CIELCh 48, 16.153, 58.235

## Background



This preview shows how black text looks on a background with the CIELCh color 48, 16.153, 58.235.



This preview shows how white text looks on a background with the CIELCh color 48, 16.153, 58.235.

# Color Blindness Simulation

Color vision deficiency is a very complex topic, and I could not describe the different causes any better than Wikipedia does, so if you want to learn more, you should check out their [article about color blindness](#).

## Dichromacy



### Original Color

48, 16.153, 58.235

### Protanopia

48, 12.105, 94.018

### Deuteranopia

48, 15.255, 66.578



**Tritanopia**  
48, 14.916, 3.095



# Trichromacy



**Original Color**  
48, 16.153, 58.235

**Protanomaly**  
48, 12.996, 78.182

**Deuteranomaly**  
48, 15.490, 62.836

**Tritanomaly**  
48, 13.735, 23.486

# Monochromacy



**Original Color**  
48, 16.153, 58.235

**Achromatopsia**  
48, 0.006, 296.813

**Achromatomaly**  
48, 5.878, 63.876

# CSS Examples

## Text

The CSS property to change the color of the text to CIELCh 48, 16.153, 58.235 is called "color". The color property can be set on classes, ids or directly on the HTML element.

This example shows how text in the color `rgb(136, 108, 91)` looks like.

```
.text, #text, p{  
    color:rgb(136, 108, 91)  
}
```

If you want to add a text shadow in that color use the text-shadow property, you can generate a text shadow directly with our [CSS Text Shadow Generator](#).

Here you see how black text with a 4 pixel rgb(136, 108, 91) colored shadow looks like.

```
.shadow{ text-shadow: 4px 4px 2px rgb(136, 108, 91) }
```

## Border

The CSS property to change the border of an element to CIELCh 48, 16.153, 58.235 is called "border". The border property can be set on classes, ids or directly on the HTML element.

This example shows the color as border, it can be applied via the CSS property "border" or "border-color".

```
.border, #border, table{ border:4px solid rgb(136, 108, 91) }
```

If only the border color should be changed use the property `border-color`.

```
.border{ border-color:rgb(136, 108, 91) }
```

If you want to add a box shadow in that color use:

Here you see how a box with a 4 pixel `rgb(136, 108, 91)` colored shadow looks like.

```
.boxshadow{ -moz-box-shadow:4px 4px 4px  
4px rgb(136, 108, 91); -webkit-box-  
shadow:4px 4px 4px 4px rgb(136, 108, 91);  
box-shadow:4px 4px 4px 4px rgb(136, 108,  
91) }
```

# Background

The CSS property to change the background color of an element to CIELCh 48, 16.153, 58.235 is called "background". The background property can be set on classes, ids or directly on the HTML element.

```
.background, #background, body{  
background: rgb(136, 108, 91) }
```

If only the background color should be changed can be used:

```
.background{ background-color: rgb(136,  
108, 91) }
```

This example shows the color as background, it is applied via the CSS property "background".

To optimize and compress your CSS code, you can use our [online CSS compressor and optimizer](#) based on csstidy. If you want to create a linear or radial gradient as background or border, check our [CSS Gradient Generator](#).

Hey! You found this booklet interesting? Support Converting Colors with the new Membership Option!

The pro membership hides all ads, plus gives you double the colors in the color bucket, and more awesome pro features!

**[Learn more, Memberships starting at \\$2.50/m!](#)**

**Follow me  
on Twitter!**

@ConvertingColor