

Converting Colors

CIELCh(48, 24.554, 56.933)

Have a look what the booklet for
CIELCh(48, 24.554, 56.933) contains.

CIELCh(48, 24.368, 57.358)	3
<i>Conversions</i>	4
<i>Details</i>	6
<i>Harmonies</i>	11
<i>Previews</i>	20
<i>Color Blindness Simulation</i>	23
<i>CSS Examples</i>	26

Color

CIELCh(48, 24.368, 57.358)

Conversions

Conversions Part 1

Format	Color
Hex	926950
RGB	146, 105, 80
RGB Percent	57%, 41%, 31%
CMY	0.4274, 0.5882, 0.6863
CMYK	0.00, 0.28, 0.45, 0.43
HSL	23°, 29%, 44%
HSV	23°, 45%, 57%
XYZ	18.3547, 16.7945, 9.8644
YIQ	114.4090, 32.4610, 0.9170

Conversions

Conversions Part 2

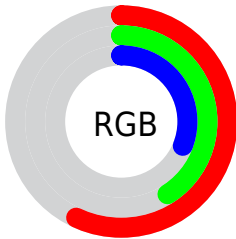
Format	Color
R_{YB}	146, 120, 80
Decimal	9595216
CIE Lab	48.00, 13.14, 20.52
CIE LCh	48, 24.368, 57.358
Yxy	16.7945, 0.4078, 0.3731
Android (android.graphics.Color)	4287785296 (0xFF926950)
YUV	114.4090, -16.9636, 27.7053
Hunter-Lab	40.9810, 8.2305, 14.4153

Details

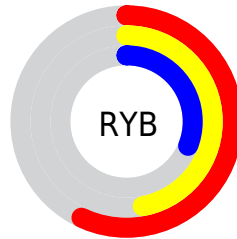
The CIELCh color **48, 24.368, 57.358** is a dark color, and the websafe version is hex **996666**. A complement of this color would be **49, 19.415, 248.101**, and the grayscale version is **48, 0.006, 296.813**.

A 20% lighter version of the original color is **68, 24.707, 57.034**, and **28, 24.223, 58.036** is the 20% darker color. If you saturate the color by 10%, you get **45, 30.738, 56.620**, and if you desaturate by 10%, it is **51, 18.356, 58.160**.

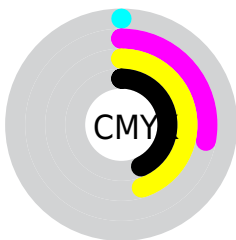
Distribution



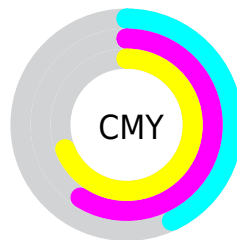
- Red (57%)
- Green (41%)
- Blue (31%)



- Red (57%)
- Yellow (47%)
- Blue (31%)



- Cyan (0%)
- Magenta (28%)
- Yellow (45%)
- Black (43%)



- Cyan (43%)
- Magenta (59%)
- Yellow (69%)

Brightness & Saturation Gradients

These gradients show how the CIELCh color 48, 24.368, 57.358 changes by changing the brightness by 10 percent. The first figure shows a shift by +10% for each color and the second figure -10%.

Similar to the brightness gradients but the following saturation gradients show a change of the CIELCh color 48, 24.368, 57.358 by changing the saturation by 10% instead.

■ 48, 24.368, 57.358

■ 48, 24.368, 57.358

■ 100, 24.368,
57.358

■ 38, 24.368, 57.358

■ 68, 24.368, 57.358

■ 28, 24.368, 57.358

■ 78, 24.368, 57.358

■ 18, 24.368, 57.358

■ 88, 24.368, 57.358

■ 8, 24.368, 57.358

■ 98, 24.368, 57.358

■ 0, 24.368, 57.358

■ 48, 24.368, 57.358

■ 48, 24.368, 57.358

■ 45, 30.738, 56.620

■ 51, 18.356, 58.160

■ 43, 37.408, 55.914

■ 53, 12.712, 59.002

41, 44.218, 55.184

56, 7.422, 59.873

39, 50.806, 54.274

59, 2.459, 60.691

37, 56.540, 52.906

62, 2.208, 241.933

36, 59.382, 52.501

65, 6.612, 242.755

68, 10.782,
243.657

71, 14.747,
244.556

74, 18.530,
245.438

Harmonies

Complementary

The Complementary color scheme is a pair of colors which are on the opposite of each other on the color wheel.



48, 24.368, 57.358



49, 19.415, 248.101

Rectangle

The Rectangle color scheme consists of four colors that form a rectangle on the color wheel.



48, 24.368, 57.358



48, 24.368, 107.358



48, 24.368, 237.358



48, 24.368, 287.358

Sweetspot

The Sweet Spot groups the original color and five complimentary colors.



48, 24.367, 57.363



72, 8.401, 59.953



43, 35.384, 340.818



37, 5.817, 59.784



88, 0.010, 296.813



40, 0.006, 296.813

Same Dimension

The Same Dimension uses a secret algorithm to generate beautiful new colors.



48, 24.367, 57.363



58, 37.053, 56.628



57, 32.172, 99.266



30, 2.734, 60.387



34, 56.788, 52.696



1, 2.332, 61.313

Inverse Universe

The Inverse Universe completely reimagines the original color for something new.



49, 19.415, 248.101



59, 27.845, 250.572



39, 34.939, 290.804



30, 2.632, 242.339



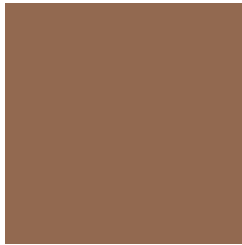
35, 35.101, 267.978



1, 2.333, 241.331

Previews

White Background



This preview shows how the CIELCh color 48, 24.368, 57.358 looks on a white background.

Color Contrast Check

Large Text (above 18pt) WCAG AA ✓ Pass

Any Text WCAG AA ✓ Pass

Large Text (above 18pt) WCAG AAA ✓ Pass

Any Text WCAG AAA × Fail

Black Background



This preview shows how the CIELCh color 48, 24.368, 57.358 looks on a black background.

Color Contrast Check

Large Text (above 18pt) WCAG AA ✓ Pass

Any Text WCAG AA × Fail

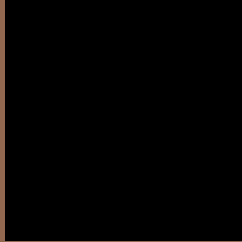
Large Text (above 18pt) WCAG AAA × Fail

Any Text WCAG AAA × Fail

If you want to check with other color combinations, try the [Color Contrast Checker](#).

CIELCh 48, 24.368, 57.358

Background



This preview shows how black text looks on a background with the CIELCh color 48, 24.368, 57.358.



This preview shows how white text looks on a background with the CIELCh color 48, 24.368, 57.358.

Color Blindness Simulation

Color vision deficiency is a very complex topic, and I could not describe the different causes any better than Wikipedia does, so if you want to learn more, you should check out their [article about color blindness](#).

Dichromacy



Original Color

48, 24.368, 57.358

Protanopia

48, 17.986, 94.848

Deuteranopia

48, 21.751, 73.012



Tritanopia
48, 20.819, 9.324

Trichromacy



Original Color
48, 24.368, 57.358

Protanomaly
48, 18.856, 79.229

Deuteranomaly
48, 22.814, 67.633

Tritanomaly
48, 20.438, 28.392

Monochromacy



Original Color
48, 24.368, 57.358

Achromatopsia
48, 0.006, 296.813

Achromatomaly
48, 8.335, 59.113

CSS Examples

Text

The CSS property to change the color of the text to CIELCh 48, 24.368, 57.358 is called "color". The color property can be set on classes, ids or directly on the HTML element.

This example shows how text in the color `rgb(146, 105, 80)` looks like.

```
.text, #text, p{  
    color:rgb(146, 105, 80)  
}
```

If you want to add a text shadow in that color use the text-shadow property, you can generate a text shadow directly with our [CSS Text Shadow Generator](#).

Here you see how black text with a 4 pixel rgb(146, 105, 80) colored shadow looks like.

```
.shadow{ text-shadow: 4px 4px 2px rgb(146, 105, 80) }
```

Border

The CSS property to change the border of an element to CIELCh 48, 24.368, 57.358 is called "border". The border property can be set on classes, ids or directly on the HTML element.

This example shows the color as border, it can be applied via the CSS property "border" or "border-color".

```
.border, #border, table{ border:4px solid rgb(146, 105, 80) }
```

If only the border color should be changed use the property `border-color`.

```
.border{ border-color:rgb(146, 105, 80) }
```

If you want to add a box shadow in that color use:

Here you see how a box with a 4 pixel `rgb(146, 105, 80)` colored shadow looks like.

```
.boxshadow{ -moz-box-shadow:4px 4px 4px  
4px rgb(146, 105, 80); -webkit-box-  
shadow:4px 4px 4px 4px rgb(146, 105, 80);  
box-shadow:4px 4px 4px 4px rgb(146, 105,  
80) }
```

Background

The CSS property to change the background color of an element to CIELCh 48, 24.368, 57.358 is called "background". The background property can be set on classes, ids or directly on the HTML element.

```
.background, #background, body{  
background: rgb(146, 105, 80) }
```

If only the background color should be changed can be used:

```
.background{ background-color: rgb(146,  
105, 80) }
```

This example shows the color as background, it is applied via the CSS property "background".

To optimize and compress your CSS code, you can use our [online CSS compressor and optimizer](#) based on csstidy. If you want to create a linear or radial gradient as background or border, check our [CSS Gradient Generator](#).

Hey! You found this booklet interesting? Support Converting Colors with the new Membership Option!

The pro membership hides all ads, plus gives you double the colors in the color bucket, and more awesome pro features!

[Learn more, Memberships starting at \\$2.50/m!](#)

**Follow me
on Twitter!**

@ConvertingColor