

Converting Colors

CIELCh(48, 67.325, 11.232)

Have a look what the booklet for
CIELCh(48, 67.325, 11.232) contains.

CIELCh(48, 67.278, 11.427)	3
<i>Conversions</i>	4
<i>Details</i>	6
<i>Harmonies</i>	11
<i>Previews</i>	20
<i>Color Blindness Simulation</i>	23
<i>CSS Examples</i>	26

Color

CIELCh(48, 67.278, 11.427)

Conversions

Conversions Part 1

Format	Color
Hex	D52D5F
RGB	213, 45, 95
RGB Percent	84%, 18%, 37%
CMY	0.1656, 0.8245, 0.6281
CMYK	0.00, 0.79, 0.55, 0.17
HSL	342°, 67%, 50%
HSV	342°, 79%, 83%
XYZ	30.3647, 16.7945, 12.4279
YIQ	100.9320, 84.0780, 51.1660

Conversions

Conversions Part 2

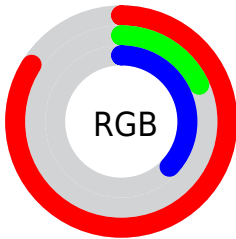
Format	Color
RYB	213, 45, 95
Decimal	13970783
CIELab	48.00, 65.94, 13.33
CIElCh	48, 67.278, 11.427
Yxy	16.7945, 0.5096, 0.2818
Android (android.graphics.Color)	4292160863 (0xFFD52D5F)
YUV	100.9320, -2.9245, 98.2836
Hunter-Lab	40.9810, 60.5420, 10.7065

Details

The CIELCh color **48, 67.278, 11.427** is a dark color, and the websafe version is hex **CC3366**. The color can be described as dark washed red. A complement of this color would be **76, 54.571, 166.089**, and the grayscale version is **43, 0.006, 296.813**.

A 20% lighter version of the original color is **65, 60.133, 7.978**, and **32, 58.762, 18.120** is the 20% darker color. If you saturate the color by 10%, you get **46, 72.378, 15.985**, and if you desaturate by 10%, it is **51, 60.740, 7.780**.

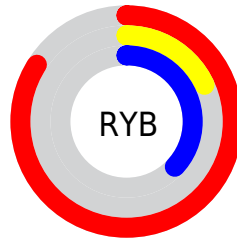
Distribution



Red (84%)

Green (18%)

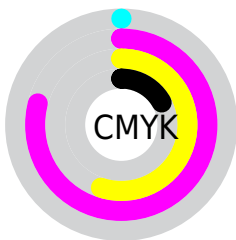
Blue (37%)



Red (84%)

Yellow (18%)

Blue (37%)

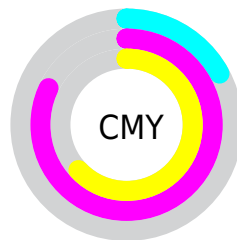


Cyan (0%)

Magenta (79%)

Yellow (55%)

Black (17%)



Cyan (17%)

Magenta (82%)

Yellow (63%)


Brightness & Saturation Gradients

These gradients show how the CIELCh color 48, 67.278, 11.427 changes by changing the brightness by 10 percent. The first figure shows a shift by +10% for each color and the second figure -10%.

Similar to the brightness gradients but the following saturation gradients show a change of the CIELCh color 48, 67.278, 11.427 by changing the saturation by 10% instead.

 48, 67.278, 11.427

 48, 67.278, 11.427

 100, 67.278,
11.427

 38, 67.278, 11.427

 68, 67.278, 11.427

 28, 67.278, 11.427

 78, 67.278, 11.427

 18, 67.278, 11.427

 88, 67.278, 11.427

 8, 67.278, 11.427

 98, 67.278, 11.427

 0, 67.278, 11.427

 48, 67.278, 11.427

 48, 67.278, 11.427

 46, 72.378, 15.985

 51, 60.740, 7.780

 45, 76.388, 21.333

 55, 52.938, 4.902

45, 76.816, 21.881

59, 44.245, 2.621

64, 35.078, 0.784

69, 25.783,
359.273

74, 16.606,
357.999

80, 7.697, 356.883

86, 0.863, 176.589

92, 9.042, 175.234

Harmonies

Complementary

The Complementary color scheme is a pair of colors which are on the opposite of each other on the color wheel.



48, 67.278, 11.427



76, 54.571, 166.089

Rectangle

The Rectangle color scheme consists of four colors that form a rectangle on the color wheel.



48, 67.278, 11.427



48, 67.278, 61.427



48, 67.278, 191.427



48, 67.278, 241.427

Sweetspot

The Sweet Spot groups the original color and five complimentary colors.



48, 67.275, 11.429



84, 24.563, 358.647



45, 94.345, 318.212



43, 16.970, 359.120



0, 0.000, 0.000



53, 0.007, 296.813

Same Dimension

The Same Dimension uses a secret algorithm to generate beautiful new colors.



48, 67.275, 11.429



54, 86.211, 19.720



52, 69.247, 42.269



42, 4.903, 356.933



36, 64.891, 20.928



5, 22.271, 6.334

Inverse Universe

The Inverse Universe completely reimagines the original color for something new.



48, 67.275, 11.429



54, 86.211, 19.720



68, 35.873, 228.762



42, 4.903, 356.933



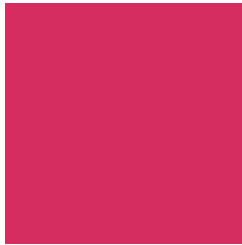
36, 64.891, 20.928



5, 22.271, 6.334

Previews

White Background



This preview shows how the CIELCh color 48, 67.278, 11.427 looks on a white background.

Color Contrast Check

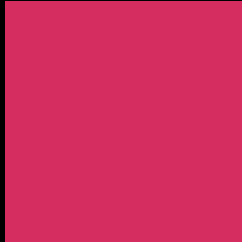
Large Text (above 18pt) WCAG AA ✓ Pass

Any Text WCAG AA ✓ Pass

Large Text (above 18pt) WCAG AAA ✓ Pass

Any Text WCAG AAA × Fail

Black Background



This preview shows how the CIELCh color 48, 67.278, 11.427 looks on a black background.

Color Contrast Check

Large Text (above 18pt) WCAG AA ✓ Pass

Any Text WCAG AA × Fail

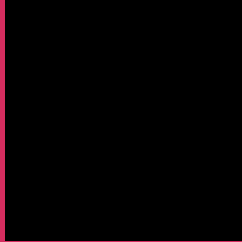
Large Text (above 18pt) WCAG AAA × Fail

Any Text WCAG AAA × Fail

If you want to check with other color combinations, try the [Color Contrast Checker](#).

CIELCh 48, 67.278, 11.427

Background



This preview shows how black text looks on a background with the CIELCh color 48, 67.278, 11.427.



This preview shows how white text looks on a background with the CIELCh color 48, 67.278, 11.427.

Color Blindness Simulation

Color vision deficiency is a very complex topic, and I could not describe the different causes any better than Wikipedia does, so if you want to learn more, you should check out their [article about color blindness](#).

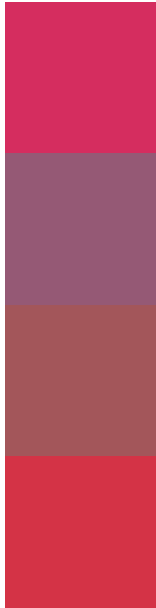
Dichromacy





Tritanopia
48, 70.661, 31.162

Trichromacy



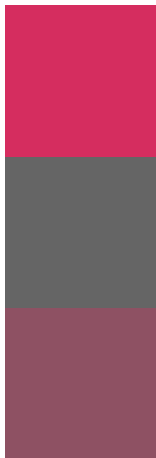
Original Color
48, 67.278, 11.427

Protanomaly
45, 29.157, 349.540

Deuteranomaly
46, 34.233, 20.623

Tritanomaly
48, 68.550, 24.508

Monochromacy



Original Color
48, 67.278, 11.427

Achromatopsia
43, 0.006, 296.813

Achromatomaly
42, 27.841, 1.458

CSS Examples

Text

The CSS property to change the color of the text to CIELCh 48, 67.278, 11.427 is called "color". The color property can be set on classes, ids or directly on the HTML element.

This example shows how text in the color `rgb(213, 45, 95)` looks like.

```
.text, #text, p{  
    color:rgb(213, 45, 95)  
}
```

If you want to add a text shadow in that color use the text-shadow property, you can generate a text shadow directly with our [CSS Text Shadow Generator](#).

Here you see how black text with a 4 pixel rgb(213, 45, 95) colored shadow looks like.

```
.shadow{ text-shadow: 4px 4px 2px rgb(213, 45, 95) }
```

Border

The CSS property to change the border of an element to CIELCh 48, 67.278, 11.427 is called "border". The border property can be set on classes, ids or directly on the HTML element.

This example shows the color as border, it can be applied via the CSS property "border" or "border-color".

```
.border, #border, table{ border:4px solid rgb(213, 45, 95) }
```

If only the border color should be changed use the property border-color.

```
.border{ border-color:rgb(213, 45, 95) }
```

If you want to add a box shadow in that color use:

Here you see how a box with a 4 pixel rgb(213, 45, 95) colored shadow looks like.

```
.boxshadow{ -moz-box-shadow:4px 4px 4px  
4px rgb(213, 45, 95); -webkit-box-  
shadow:4px 4px 4px 4px rgb(213, 45, 95);  
box-shadow:4px 4px 4px 4px rgb(213, 45,  
95) }
```

Background

The CSS property to change the background color of an element to CIELCh 48, 67.278, 11.427 is called "background". The background property can be set on classes, ids or directly on the HTML element.

```
.background, #background, body{  
background: rgb(213, 45, 95) }
```

If only the background color should be changed can be used:

```
.background{ background-color: rgb(213, 45,  
95) }
```

This example shows the color as background, it is applied via the CSS property "background".

To optimize and compress your CSS code, you can use our [online CSS compressor and optimizer](#) based on csstidy. If you want to create a linear or radial gradient as background or border, check our [CSS Gradient Generator](#).

Hey! You found this booklet interesting? Support Converting Colors with the new Membership Option!

The pro membership hides all ads, plus gives you double the colors in the color bucket, and more awesome pro features!

[Learn more, Memberships starting at \\$2.50/m!](#)

**Follow me
on Twitter!**

@ConvertingColor