

Converting Colors

CIELCh(48, 68.970, 14.441)

Have a look what the booklet for
CIELCh(48, 68.970, 14.441) contains.

CIELCh(48, 69.003, 14.287)	3
<i>Conversions</i>	4
<i>Details</i>	6
<i>Harmonies</i>	11
<i>Previews</i>	20
<i>Color Blindness Simulation</i>	23
<i>CSS Examples</i>	26

Color

CIELCh(48, 69.003, 14.287)

Conversions

Conversions Part 1

Format	Color
Hex	D72A59
RGB	215, 42, 89
RGB Percent	84%, 16%, 35%
CMY	0.1573, 0.8358, 0.6513
CMYK	0.00, 0.81, 0.59, 0.16
HSL	344°, 68%, 50%
HSV	344°, 81%, 84%
XYZ	30.6118, 16.7945, 11.0597
YIQ	99.0850, 88.0210, 51.2930

Conversions

Conversions Part 2

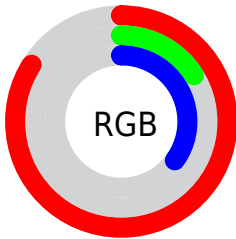
Format	Color
RYB	215, 42, 89
Decimal	14101081
CIELab	48.00, 66.87, 17.03
CIElCh	48, 69.003, 14.287
Yxy	16.7945, 0.5236, 0.2873
Android (android.graphics.Color)	4292291161 (0xFFD72A59)
YUV	99.0850, -4.9719, 101.6575
Hunter-Lab	40.9810, 61.6180, 12.6859

Details

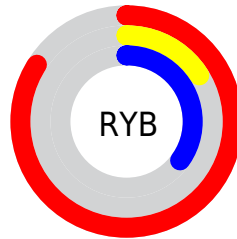
The CIELCh color **48, 69.003, 14.287** is a dark color, and the websafe version is hex **CC3366**. The color can be described as dark washed red. A complement of this color would be **77, 54.083, 167.834**, and the grayscale version is **42, 0.006, 296.813**.

A 20% lighter version of the original color is **65, 60.494, 10.806**, and **32, 59.948, 21.304** is the 20% darker color. If you saturate the color by 10%, you get **46, 74.288, 19.087**, and if you desaturate by 10%, it is **51, 62.375, 10.400**.

Distribution



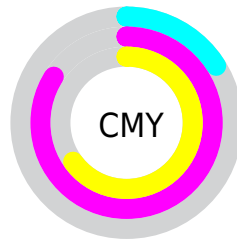
- Red (84%)
- Green (16%)
- Blue (35%)



- Red (84%)
- Yellow (16%)
- Blue (35%)



- Cyan (0%)
- Magenta (81%)
- Yellow (59%)
- Black (16%)



- Cyan (16%)
- Magenta (84%)
- Yellow (65%)


Brightness & Saturation Gradients

These gradients show how the CIELCh color 48, 69.003, 14.287 changes by changing the brightness by 10 percent. The first figure shows a shift by +10% for each color and the second figure -10%.

Similar to the brightness gradients but the following saturation gradients show a change of the CIELCh color 48, 69.003, 14.287 by changing the saturation by 10% instead.

 48, 69.003, 14.287

 48, 69.003, 14.287

 100, 69.003,
14.287

 38, 69.003, 14.287

 68, 69.003, 14.287

 28, 69.003, 14.287

 78, 69.003, 14.287

 18, 69.003, 14.287

 88, 69.003, 14.287

 8, 69.003, 14.287

 98, 69.003, 14.287

 0, 69.003, 14.287

 48, 69.003, 14.287

 48, 69.003, 14.287

 46, 74.288, 19.087

 51, 62.375, 10.400

 45, 78.493, 24.231

 54, 54.517, 7.323

■ 59, 45.771, 4.893

■ 63, 36.545, 2.948

■ 69, 27.191, 1.362

■ 74, 17.963, 0.036

■ 80, 9.017, 358.892

■ 86, 0.437, 356.809

■ 92, 7.746, 177.208

Harmonies

Complementary

The Complementary color scheme is a pair of colors which are on the opposite of each other on the color wheel.



48, 69.003, 14.287



77, 54.083, 167.834

Rectangle

The Rectangle color scheme consists of four colors that form a rectangle on the color wheel.



48, 69.003, 14.287



48, 69.003, 64.287



48, 69.003, 194.287



48, 69.003, 244.287

Sweetspot

The Sweet Spot groups the original color and five complimentary colors.



48, 69.000, 14.289



84, 24.314, 0.504



45, 96.116, 318.694



43, 16.808, 0.984



0, 0.000, 0.000



53, 0.007, 296.813

Same Dimension

The Same Dimension uses a secret algorithm to generate beautiful new colors.



48, 69.000, 14.289



54, 88.196, 23.175



52, 70.769, 43.363



42, 4.842, 358.773



36, 65.748, 23.240



5, 22.196, 7.624

Inverse Universe

The Inverse Universe completely reimagines the original color for something new.



48, 69.000, 14.289



54, 88.196, 23.175



67, 36.510, 232.327



42, 4.842, 358.773



36, 65.748, 23.240



5, 22.196, 7.624

Previews

White Background



This preview shows how the CIELCh color 48, 69.003, 14.287 looks on a white background.

Color Contrast Check

Large Text (above 18pt) WCAG AA ✓ Pass

Any Text WCAG AA ✓ Pass

Large Text (above 18pt) WCAG AAA ✓ Pass

Any Text WCAG AAA × Fail

Black Background



This preview shows how the CIELCh color 48, 69.003, 14.287 looks on a black background.

Color Contrast Check

Large Text (above 18pt) WCAG AA ✓ Pass

Any Text WCAG AA × Fail

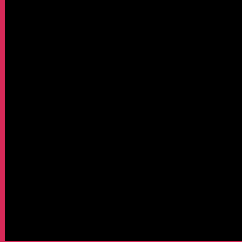
Large Text (above 18pt) WCAG AAA × Fail

Any Text WCAG AAA × Fail

If you want to check with other color combinations, try the [Color Contrast Checker](#).

CIELCh 48, 69.003, 14.287

Background



This preview shows how black text looks on a background with the CIELCh color 48, 69.003, 14.287.



This preview shows how white text looks on a background with the CIELCh color 48, 69.003, 14.287.

Color Blindness Simulation

Color vision deficiency is a very complex topic, and I could not describe the different causes any better than Wikipedia does, so if you want to learn more, you should check out their [article about color blindness](#).

Dichromacy



Original Color

48, 69.003, 14.287

Protanopia

48, 4.738, 295.588

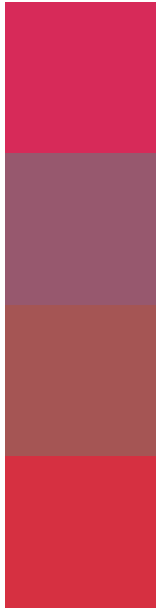
Deuteranopia

48, 21.216, 72.295



Tritanopia
48, 73.095, 32.179

Trichromacy



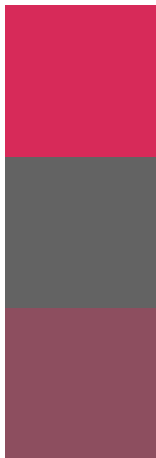
Original Color
48, 69.003, 14.287

Protanomaly
45, 28.935, 357.450

Deuteranomaly
46, 36.278, 25.553

Tritanomaly
48, 70.973, 26.331

Monochromacy



Original Color
48, 69.003, 14.287

Achromatopsia
42, 0.006, 296.813

Achromatomaly
41, 28.636, 3.599

CSS Examples

Text

The CSS property to change the color of the text to CIELCh 48, 69.003, 14.287 is called "color". The color property can be set on classes, ids or directly on the HTML element.

This example shows how text in the color `rgb(215, 42, 89)` looks like.

```
.text, #text, p{  
    color:rgb(215, 42, 89)  
}
```

If you want to add a text shadow in that color use the text-shadow property, you can generate a text shadow directly with our [CSS Text Shadow Generator](#).

Here you see how black text with a 4 pixel rgb(215, 42, 89) colored shadow looks like.

```
.shadow{ text-shadow: 4px 4px 2px rgb(215, 42, 89) }
```

Border

The CSS property to change the border of an element to CIELCh 48, 69.003, 14.287 is called "border". The border property can be set on classes, ids or directly on the HTML element.

This example shows the color as border, it can be applied via the CSS property "border" or "border-color".

```
.border, #border, table{ border:4px solid rgb(215, 42, 89) }
```

If only the border color should be changed use the property `border-color`.

```
.border{ border-color:rgb(215, 42, 89) }
```

If you want to add a box shadow in that color use:

Here you see how a box with a 4 pixel `rgb(215, 42, 89)` colored shadow looks like.

```
.boxshadow{ -moz-box-shadow:4px 4px 4px  
4px rgb(215, 42, 89); -webkit-box-  
shadow:4px 4px 4px 4px rgb(215, 42, 89);  
box-shadow:4px 4px 4px 4px rgb(215, 42,  
89) }
```

Background

The CSS property to change the background color of an element to CIELCh 48, 69.003, 14.287 is called "background". The background property can be set on classes, ids or directly on the HTML element.

```
.background, #background, body{  
background: rgb(215, 42, 89) }
```

If only the background color should be changed can be used:

```
.background{ background-color: rgb(215, 42,  
89) }
```

This example shows the color as background, it is applied via the CSS property "background".

To optimize and compress your CSS code, you can use our [online CSS compressor and optimizer](#) based on csstidy. If you want to create a linear or radial gradient as background or border, check our [CSS Gradient Generator](#).

Hey! You found this booklet interesting? Support Converting Colors with the new Membership Option!

The pro membership hides all ads, plus gives you double the colors in the color bucket, and more awesome pro features!

[Learn more, Memberships starting at \\$2.50/m!](#)

**Follow me
on Twitter!**

@ConvertingColor