

Converting Colors

CIELCh(49, 25.370, 60.616)

Have a look what the booklet for
CIELCh(49, 25.370, 60.616) contains.

CIELCh(49, 25.098, 60.738)	3
<i>Conversions</i>	4
<i>Details</i>	6
<i>Harmonies</i>	11
<i>Previews</i>	20
<i>Color Blindness Simulation</i>	23
<i>CSS Examples</i>	26

Color

CIELCh(49, 25.098, 60.738)

Conversions

Conversions Part 1

Format	Color
Hex	946C50
RGB	148, 108, 80
RGB Percent	58%, 42%, 31%
CMY	0.4197, 0.5765, 0.6863
CMYK	0.00, 0.27, 0.46, 0.42
HSL	25°, 30%, 45%
HSV	25°, 46%, 58%
XYZ	19.0169, 17.5941, 9.9795
YIQ	116.7680, 32.8280, -0.2280

Conversions

Conversions Part 2

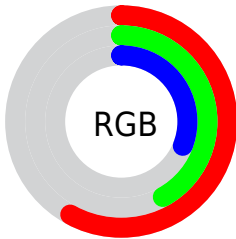
Format	Color
RYB	148, 128, 80
Decimal	9727056
CIELab	49.00, 12.27, 21.90
CIElCh	49, 25.098, 60.738
Yxy	17.5941, 0.4082, 0.3776
Android (android.graphics.Color)	4287917136 (0xFF946C50)
YUV	116.7680, -18.1266, 27.3905
Hunter-Lab	41.9453, 7.5232, 15.2556

Details

The CIELCh color **49, 25.098, 60.738** is a dark color, and the websafe version is hex **996633**. A complement of this color would be **49, 20.452, 252.739**, and the grayscale version is **49, 0.007, 296.813**.

A 20% lighter version of the original color is **69, 25.014, 59.413**, and **29, 24.982, 59.911** is the 20% darker color. If you saturate the color by 10%, you get **47, 31.479, 59.828**, and if you desaturate by 10%, it is **52, 19.042, 61.688**.

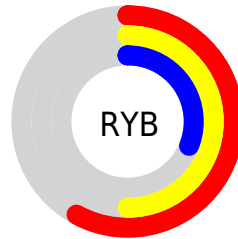
Distribution



Red (58%)

Green (42%)

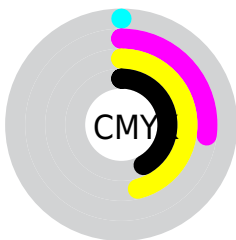
Blue (31%)



Red (58%)

Yellow (50%)

Blue (31%)

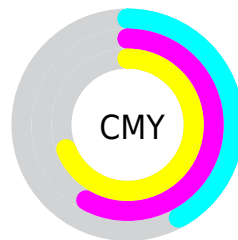


Cyan (0%)

Magenta (27%)

Yellow (46%)

Black (42%)



Cyan (42%)

Magenta (58%)

Yellow (69%)

Brightness & Saturation Gradients

These gradients show how the CIELCh color 49, 25.098, 60.738 changes by changing the brightness by 10 percent. The first figure shows a shift by +10% for each color and the second figure -10%.

Similar to the brightness gradients but the following saturation gradients show a change of the CIELCh color 49, 25.098, 60.738 by changing the saturation by 10% instead.

■ 49, 25.098, 60.738

■ 49, 25.098, 60.738

■ 100, 25.098,
60.738

■ 39, 25.098, 60.738

■ 69, 25.098, 60.738

■ 29, 25.098, 60.738

■ 79, 25.098, 60.738

■ 19, 25.098, 60.738

■ 89, 25.098, 60.738

■ 9, 25.098, 60.738

■ 99, 25.098, 60.738

■ 0, 25.098, 60.738

■ 49, 25.098, 60.738

■ 49, 25.098, 60.738

■ 47, 31.479, 59.828

■ 52, 19.042, 61.688

■ 44, 38.113, 58.922

■ 54, 13.329, 62.662

42, 44.818, 57.956

57, 7.948, 63.650

40, 51.199, 56.763

60, 2.877, 64.592

38, 56.650, 55.102

62, 1.913, 245.916

37, 58.956, 54.633

65, 6.451, 246.800

68, 10.767,
247.775

71, 14.887,
248.739

74, 18.833,
249.680

Harmonies

Complementary

The Complementary color scheme is a pair of colors which are on the opposite of each other on the color wheel.



49, 25.098, 60.738



49, 20.452, 252.739

Rectangle

The Rectangle color scheme consists of four colors that form a rectangle on the color wheel.



49, 25.098, 60.738



49, 25.098, 110.738



49, 25.098, 240.738



49, 25.098, 290.738

Sweetspot

The Sweet Spot groups the original color and five complimentary colors.



49, 25.098, 60.743



73, 8.557, 63.815



43, 35.579, 342.617



38, 5.989, 63.620



89, 0.011, 296.813



41, 0.006, 296.813

Same Dimension

The Same Dimension uses a secret algorithm to generate beautiful new colors.



49, 25.098, 60.743



60, 38.159, 59.815



58, 34.040, 101.030



30, 2.758, 64.303



35, 55.835, 54.894



1, 2.358, 65.313

Inverse Universe

The Inverse Universe completely reimagines the original color for something new.



49, 20.452, 252.739



59, 29.517, 255.427



39, 37.427, 292.485



30, 2.667, 246.417



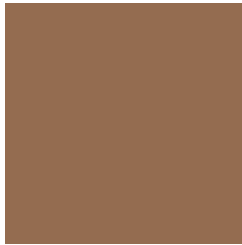
33, 37.423, 272.639



1, 2.358, 245.329

Previews

White Background



This preview shows how the CIELCh color 49, 25.098, 60.738 looks on a white background.

Color Contrast Check

Large Text (above 18pt) WCAG AA ✓ Pass

Any Text WCAG AA ✓ Pass

Large Text (above 18pt) WCAG AAA ✓ Pass

Any Text WCAG AAA × Fail

Black Background



This preview shows how the CIELCh color 49, 25.098, 60.738 looks on a black background.

Color Contrast Check

Large Text (above 18pt) WCAG AA ✓ Pass

Any Text WCAG AA ✓ Pass

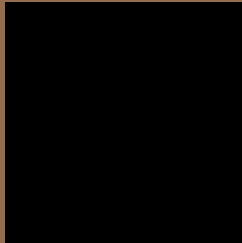
Large Text (above 18pt) WCAG AAA ✓ Pass

Any Text WCAG AAA × Fail

If you want to check with other color combinations, try the [Color Contrast Checker](#).

CIELCh 49, 25.098, 60.738

Background



This preview shows how black text looks on a background with the CIELCh color 49, 25.098, 60.738.



This preview shows how white text looks on a background with the CIELCh color 49, 25.098, 60.738.

Color Blindness Simulation

Color vision deficiency is a very complex topic, and I could not describe the different causes any better than Wikipedia does, so if you want to learn more, you should check out their [article about color blindness](#).

Dichromacy



Original Color

49, 25.098, 60.738

Protanopia

49, 19.593, 95.738

Deuteranopia

49, 23.394, 74.228



Tritanopia
49, 20.298, 8.902

Trichromacy



Original Color
49, 25.098, 60.738

Protanomaly
49, 20.328, 81.280

Deuteranomaly
49, 24.100, 69.990

Tritanomaly
49, 20.022, 30.033

Monochromacy



Original Color
49, 25.098, 60.738

Achromatopsia
49, 0.007, 296.813

Achromatomaly
49, 8.372, 63.954

CSS Examples

Text

The CSS property to change the color of the text to CIELCh 49, 25.098, 60.738 is called "color". The color property can be set on classes, ids or directly on the HTML element.

This example shows how text in the color `rgb(148, 108, 80)` looks like.

```
.text, #text, p{  
    color:rgb(148, 108, 80)  
}
```

If you want to add a text shadow in that color use the text-shadow property, you can generate a text shadow directly with our [CSS Text Shadow Generator](#).

Here you see how black text with a 4 pixel rgb(148, 108, 80) colored shadow looks like.

```
.shadow{ text-shadow: 4px 4px 2px rgb(148, 108, 80) }
```

Border

The CSS property to change the border of an element to CIELCh 49, 25.098, 60.738 is called "border". The border property can be set on classes, ids or directly on the HTML element.

This example shows the color as border, it can be applied via the CSS property "border" or "border-color".

```
.border, #border, table{ border:4px solid rgb(148, 108, 80) }
```

If only the border color should be changed use the property `border-color`.

```
.border{ border-color:rgb(148, 108, 80) }
```

If you want to add a box shadow in that color use:

Here you see how a box with a 4 pixel `rgb(148, 108, 80)` colored shadow looks like.

```
.boxshadow{ -moz-box-shadow:4px 4px 4px  
4px rgb(148, 108, 80); -webkit-box-  
shadow:4px 4px 4px 4px rgb(148, 108, 80);  
box-shadow:4px 4px 4px 4px rgb(148, 108,  
80) }
```

Background

The CSS property to change the background color of an element to CIELCh 49, 25.098, 60.738 is called "background". The background property can be set on classes, ids or directly on the HTML element.

```
.background, #background, body{  
background: rgb(148, 108, 80) }
```

If only the background color should be changed can be used:

```
.background{ background-color: rgb(148,  
108, 80) }
```

This example shows the color as background, it is applied via the CSS property "background".

To optimize and compress your CSS code, you can use our [online CSS compressor and optimizer](#) based on csstidy. If you want to create a linear or radial gradient as background or border, check our [CSS Gradient Generator](#).

Hey! You found this booklet interesting? Support Converting Colors with the new Membership Option!

The pro membership hides all ads, plus gives you double the colors in the color bucket, and more awesome pro features!

[Learn more, Memberships starting at \\$2.50/m!](#)

**Follow me
on Twitter!**

@ConvertingColor