

Converting Colors

CIELCh(49, 58.983, 5.333)

Have a look what the booklet for
CIELCh(49, 58.983, 5.333) contains.

CIELCh(49, 58.960, 4.972)	3
<i>Conversions</i>	4
<i>Details</i>	6
<i>Harmonies</i>	11
<i>Previews</i>	20
<i>Color Blindness Simulation</i>	23
<i>CSS Examples</i>	26

Color

CIELCh(49, 58.960, 4.972)

Conversions

Conversions Part 1

Format	Color
Hex	CC3F6E
RGB	204, 63, 110
RGB Percent	80%, 25%, 43%
CMY	0.1989, 0.7518, 0.5677
CMYK	0.00, 0.69, 0.46, 0.20
HSL	340°, 58%, 52%
HSV	340°, 69%, 80%
XYZ	29.5995, 17.5941, 16.6541
YIQ	110.5170, 68.9490, 44.5090

Conversions

Conversions Part 2

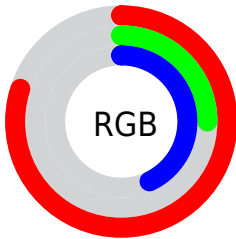
Format	Color
R_{YB}	204, 63, 110
Decimal	13385582
CIE _{Lab}	49.00, 58.74, 5.11
CIE _{LCh}	49, 58.960, 4.972
Yxy	17.5941, 0.4636, 0.2756
Android (android.graphics.Color)	4291575662 (0xFFCC3F6E)
YUV	110.5170, -0.2549, 81.9846
Hunter-Lab	41.9453, 52.5576, 5.8210

Details

The CIELCh color **49, 58.960, 4.972** is a dark color, and the websafe version is hex **CC3366**. The color can be described as dark muted rose. A complement of this color would be **74, 50.074, 165.361**, and the grayscale version is **47, 0.006, 296.813**.

A 20% lighter version of the original color is **67, 55.382, 3.165**, and **30, 55.159, 6.954** is the 20% darker color. If you saturate the color by 10%, you get **46, 65.010, 8.445**, and if you desaturate by 10%, it is **53, 51.572, 2.237**.

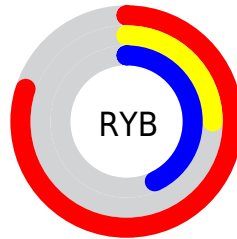
Distribution



Red (80%)

Green (25%)

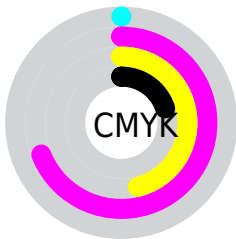
Blue (43%)



Red (80%)

Yellow (25%)

Blue (43%)

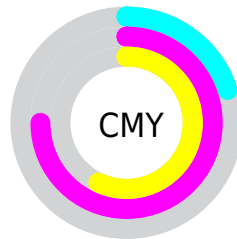


Cyan (0%)

Magenta (69%)

Yellow (46%)

Black (20%)



Cyan (20%)

Magenta (75%)

Yellow (57%)

Brightness & Saturation Gradients

These gradients show how the CIELCh color 49, 58.960, 4.972 changes by changing the brightness by 10 percent. The first figure shows a shift by +10% for each color and the second figure -10%.

Similar to the brightness gradients but the following saturation gradients show a change of the CIELCh color 49, 58.960, 4.972 by changing the saturation by 10% instead.

 49, 58.960, 4.972  49, 58.960, 4.972

 100, 58.960, 4.972  39, 58.960, 4.972


 69, 58.960, 4.972  29, 58.960, 4.972


 79, 58.960, 4.972  19, 58.960, 4.972

 89, 58.960, 4.972  9, 58.960, 4.972

 99, 58.960, 4.972  0, 58.960, 4.972

 49, 58.960, 4.972  49, 58.960, 4.972

 46, 65.010, 8.445  53, 51.572, 2.237

 44, 69.552, 12.807  57, 43.243, 0.060

 43, 72.927, 17.994  61, 34.384,

■ 43, 73.268, 18.502

358.297

■ 66, 25.345,
356.836

■ 72, 16.375,
355.594

■ 77, 7.629, 354.500

■ 83, 0.806, 174.221

■ 88, 8.893, 172.862

■ 94, 16.625,
172.097

Harmonies

Complementary

The Complementary color scheme is a pair of colors which are on the opposite of each other on the color wheel.



49, 58.960, 4.972



74, 50.074, 165.361

Rectangle

The Rectangle color scheme consists of four colors that form a rectangle on the color wheel.



49, 58.960, 4.972



49, 58.960, 54.972



49, 58.960, 184.972



49, 58.960, 234.972

Sweetspot

The Sweet Spot groups the original color and five complimentary colors.



49, 58.957, 4.974



86, 21.722, 355.858



46, 82.848, 317.233



44, 14.764, 356.198



0, 0.000, 0.000



53, 0.007, 296.813

Same Dimension

The Same Dimension uses a secret algorithm to generate beautiful new colors.



49, 58.957, 4.974



56, 79.768, 10.531



52, 58.151, 39.043



40, 4.795, 354.540



35, 62.486, 17.577



4, 18.701, 3.214

Inverse Universe

The Inverse Universe completely reimagines the original color for something new.



49, 58.957, 4.974



56, 79.768, 10.531



68, 32.901, 220.647



40, 4.795, 354.540



35, 62.486, 17.577



4, 18.701, 3.214

Previews

White Background



This preview shows how the CIELCh color 49, 58.960, 4.972 looks on a white background.

Color Contrast Check

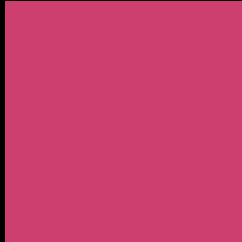
Large Text (above 18pt) WCAG AA ✓ Pass

Any Text WCAG AA ✓ Pass

Large Text (above 18pt) WCAG AAA ✓ Pass

Any Text WCAG AAA × Fail

Black Background



This preview shows how the CIE LCh color 49, 58.960, 4.972 looks on a black background.

Color Contrast Check

Large Text (above 18pt) WCAG AA ✓ Pass

Any Text WCAG AA ✓ Pass

Large Text (above 18pt) WCAG AAA ✓ Pass

Any Text WCAG AAA × Fail

If you want to check with other color combinations, try the [Color Contrast Checker](#).

CIELCh 49, 58.960, 4.972

Background



This preview shows how black text looks on a background with the CIELCh color 49, 58.960, 4.972.

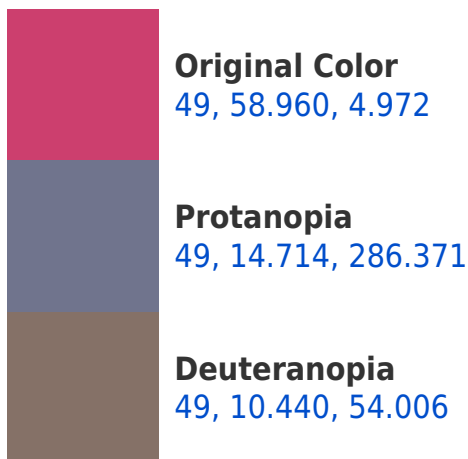


This preview shows how white text looks on a background with the CIELCh color 49, 58.960, 4.972.

Color Blindness Simulation

Color vision deficiency is a very complex topic, and I could not describe the different causes any better than Wikipedia does, so if you want to learn more, you should check out their [article about color blindness](#).

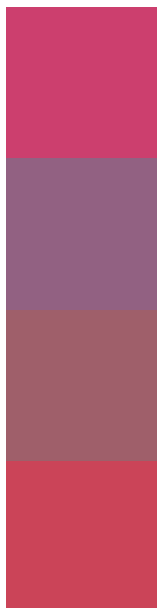
Dichromacy





Tritanopia
49, 58.414, 26.737

Trichromacy



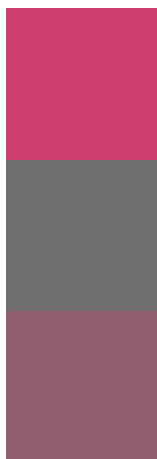
Original Color
49, 58.960, 4.972

Protanomaly
47, 27.214, 337.846

Deuteranomaly
48, 27.905, 10.238

Tritanomaly
49, 57.670, 18.675

Monochromacy



Original Color
49, 58.960, 4.972

Achromatopsia
47, 0.006, 296.813

Achromatomaly
46, 23.362, 357.545

CSS Examples

Text

The CSS property to change the color of the text to CIELCh 49, 58.960, 4.972 is called "color". The color property can be set on classes, ids or directly on the HTML element.

This example shows how text in the color `rgb(204, 63, 110)` looks like.

```
.text, #text, p{  
    color:rgb(204, 63, 110)  
}
```

If you want to add a text shadow in that color use the text-shadow property, you can generate a text shadow directly with our [CSS Text Shadow Generator](#).

Here you see how black text with a 4 pixel rgb(204, 63, 110) colored shadow looks like.

```
.shadow{ text-shadow: 4px 4px 2px rgb(204, 63, 110) }
```

Border

The CSS property to change the border of an element to CIELCh 49, 58.960, 4.972 is called "border". The border property can be set on classes, ids or directly on the HTML element.

This example shows the color as border, it can be applied via the CSS property "border" or "border-color".

```
.border, #border, table{ border:4px solid rgb(204, 63, 110) }
```

If only the border color should be changed use the property `border-color`.

```
.border{ border-color:rgb(204, 63, 110) }
```

If you want to add a box shadow in that color use:

Here you see how a box with a 4 pixel `rgb(204, 63, 110)` colored shadow looks like.

```
.boxshadow{ -moz-box-shadow:4px 4px 4px  
4px rgb(204, 63, 110); -webkit-box-  
shadow:4px 4px 4px 4px rgb(204, 63, 110);  
box-shadow:4px 4px 4px 4px rgb(204, 63,  
110) }
```

Background

The CSS property to change the background color of an element to CIELCh 49, 58.960, 4.972 is called "background". The background property can be set on classes, ids or directly on the HTML element.

```
.background, #background, body{  
background: rgb(204, 63, 110) }
```

If only the background color should be changed can be used:

```
.background{ background-color: rgb(204, 63,  
110) }
```

This example shows the color as background, it is applied via the CSS property "background".

To optimize and compress your CSS code, you can use our [online CSS compressor and optimizer](#) based on csstidy. If you want to create a linear or radial gradient as background or border, check our [CSS Gradient Generator](#).

Hey! You found this booklet interesting? Support Converting Colors with the new Membership Option!

The pro membership hides all ads, plus gives you double the colors in the color bucket, and more awesome pro features!

[Learn more, Memberships starting at \\$2.50/m!](#)

**Follow me
on Twitter!**

@ConvertingColor