

Converting Colors

CIELCh(49, 64.722, 8.254)

Have a look what the booklet for
CIELCh(49, 64.722, 8.254) contains.

CIELCh(49, 64.620, 8.010)	3
<i>Conversions</i>	4
<i>Details</i>	6
<i>Harmonies</i>	11
<i>Previews</i>	20
<i>Color Blindness Simulation</i>	23
<i>CSS Examples</i>	26

Color

CIELCh(49, 64.620, 8.010)

Conversions

Conversions Part 1

Format	Color
Hex	D43568
RGB	212, 53, 104
RGB Percent	83%, 21%, 41%
CMY	0.1679, 0.7913, 0.5915
CMYK	0.00, 0.75, 0.51, 0.17
HSL	341°, 65%, 52%
HSV	341°, 75%, 83%
XYZ	30.9968, 17.5941, 14.9004
YIQ	106.3550, 78.3930, 49.5690

Conversions

Conversions Part 2

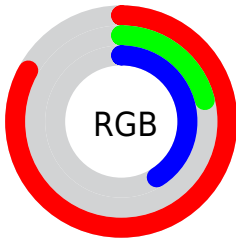
Format	Color
R_{YB}	212, 53, 104
Decimal	13907304
CIE _{Lab}	49.00, 63.99, 9.00
CIE _{LCh}	49, 64.620, 8.010
Yxy	17.5941, 0.4882, 0.2771
Android (android.graphics.Color)	4292097384 (0xFFD43568)
YUV	106.3550, -1.1610, 92.6507
Hunter-Lab	41.9453, 58.5041, 8.2999

Details

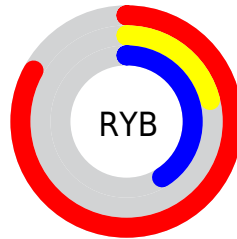
The CIELCh color **49, 64.620, 8.010** is a dark color, and the websafe version is hex **CC3366**. The color can be described as dark muted rose. A complement of this color would be **76, 53.923, 165.182**, and the grayscale version is **45, 0.006, 296.813**.

A 20% lighter version of the original color is **66, 58.049, 4.403**, and **32, 57.510, 12.914** is the 20% darker color. If you saturate the color by 10%, you get **47, 70.041, 12.086**, and if you desaturate by 10%, it is **52, 57.710, 4.788**.

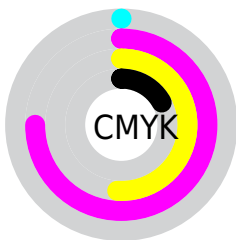
Distribution



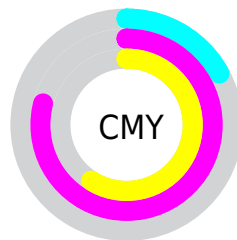
- Red (83%)
- Green (21%)
- Blue (41%)



- Red (83%)
- Yellow (21%)
- Blue (41%)



- Cyan (0%)
- Magenta (75%)
- Yellow (51%)
- Black (17%)



- Cyan (17%)
- Magenta (79%)
- Yellow (59%)

Brightness & Saturation Gradients

These gradients show how the CIELCh color 49, 64.620, 8.010 changes by changing the brightness by 10 percent. The first figure shows a shift by +10% for each color and the second figure -10%.

Similar to the brightness gradients but the following saturation gradients show a change of the CIELCh color 49, 64.620, 8.010 by changing the saturation by 10% instead.

 49, 64.620, 8.010  49, 64.620, 8.010

 100, 64.620, 8.010  39, 64.620, 8.010

 69, 64.620, 8.010  29, 64.620, 8.010

 79, 64.620, 8.010  19, 64.620, 8.010

 89, 64.620, 8.010  9, 64.620, 8.010

 99, 64.620, 8.010  0, 64.620, 8.010

 49, 64.620, 8.010  49, 64.620, 8.010

 47, 70.041, 12.086  52, 57.710, 4.788

 45, 74.028, 17.095  56, 49.609, 2.244

 45, 75.840, 19.824  61, 40.735, 0.212

66, 31.495,
358.555

71, 22.203,
357.173

76, 13.072,
355.989

82, 4.229, 354.899

88, 4.265, 174.242

94, 12.386,
173.376

Harmonies

Complementary

The Complementary color scheme is a pair of colors which are on the opposite of each other on the color wheel.



49, 64.620, 8.010



76, 53.923, 165.182

Rectangle

The Rectangle color scheme consists of four colors that form a rectangle on the color wheel.



49, 64.620, 8.010



49, 64.620, 58.010



49, 64.620, 188.010



49, 64.620, 238.010

Sweetspot

The Sweet Spot groups the original color and five complimentary colors.



49, 64.617, 8.012



86, 22.661, 356.839



45, 90.983, 317.249



44, 15.290, 357.180



0, 0.000, 0.000



53, 0.007, 296.813

Same Dimension

The Same Dimension uses a secret algorithm to generate beautiful new colors.



49, 64.617, 8.012



55, 83.391, 14.996



52, 66.140, 39.870



42, 4.959, 355.394



36, 64.253, 18.888



5, 22.348, 5.175

Inverse Universe

The Inverse Universe completely reimagines the original color for something new.



49, 64.617, 8.012



55, 83.391, 14.996



70, 35.206, 221.807



42, 4.959, 355.394



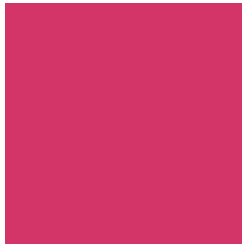
36, 64.253, 18.888



5, 22.348, 5.175

Previews

White Background



This preview shows how the CIELCh color 49, 64.620, 8.010 looks on a white background.

Color Contrast Check

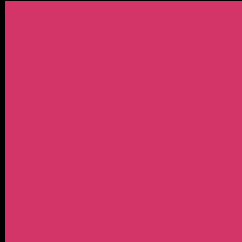
Large Text (above 18pt) WCAG AA ✓ Pass

Any Text WCAG AA ✓ Pass

Large Text (above 18pt) WCAG AAA ✓ Pass

Any Text WCAG AAA × Fail

Black Background



This preview shows how the CIELCh color 49, 64.620, 8.010 looks on a black background.

Color Contrast Check

Large Text (above 18pt) WCAG AA ✓ Pass

Any Text WCAG AA ✓ Pass

Large Text (above 18pt) WCAG AAA ✓ Pass

Any Text WCAG AAA × Fail

If you want to check with other color combinations, try the [Color Contrast Checker](#).

CIELCh 49, 64.620, 8.010

Background



This preview shows how black text looks on a background with the CIELCh color 49, 64.620, 8.010.



This preview shows how white text looks on a background with the CIELCh color 49, 64.620, 8.010.

Color Blindness Simulation

Color vision deficiency is a very complex topic, and I could not describe the different causes any better than Wikipedia does, so if you want to learn more, you should check out their [article about color blindness](#).

Dichromacy



Original Color

49, 64.620, 8.010

Protanopia

49, 12.940, 286.925

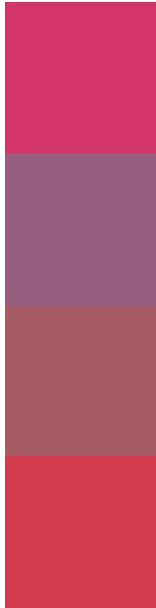
Deuteranopia

49, 14.278, 63.806



Tritanopia
49, 66.240, 29.298

Trichromacy



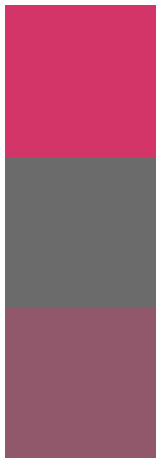
Original Color
49, 64.620, 8.010

Protanomaly
47, 29.275, 342.298

Deuteranomaly
47, 31.929, 15.771

Tritanomaly
49, 64.618, 21.958

Monochromacy



Original Color
49, 64.620, 8.010

Achromatopsia
45, 0.006, 296.813

Achromatomaly
44, 26.603, 358.667

CSS Examples

Text

The CSS property to change the color of the text to CIELCh 49, 64.620, 8.010 is called "color". The color property can be set on classes, ids or directly on the HTML element.

This example shows how text in the color `rgb(212, 53, 104)` looks like.

```
.text, #text, p{  
    color:rgb(212, 53, 104)  
}
```

If you want to add a text shadow in that color use the text-shadow property, you can generate a text shadow directly with our [CSS Text Shadow Generator](#).

Here you see how black text with a 4 pixel rgb(212, 53, 104) colored shadow looks like.

```
.shadow{ text-shadow: 4px 4px 2px rgb(212, 53, 104) }
```

Border

The CSS property to change the border of an element to CIELCh 49, 64.620, 8.010 is called "border". The border property can be set on classes, ids or directly on the HTML element.

This example shows the color as border, it can be applied via the CSS property "border" or "border-color".

```
.border, #border, table{ border:4px solid rgb(212, 53, 104) }
```

If only the border color should be changed use the property `border-color`.

```
.border{ border-color:rgb(212, 53, 104) }
```

If you want to add a box shadow in that color use:

Here you see how a box with a 4 pixel `rgb(212, 53, 104)` colored shadow looks like.

```
.boxshadow{ -moz-box-shadow:4px 4px 4px  
4px rgb(212, 53, 104); -webkit-box-  
shadow:4px 4px 4px 4px rgb(212, 53, 104);  
box-shadow:4px 4px 4px 4px rgb(212, 53,  
104) }
```

Background

The CSS property to change the background color of an element to CIELCh 49, 64.620, 8.010 is called "background". The background property can be set on classes, ids or directly on the HTML element.

```
.background, #background, body{  
background: rgb(212, 53, 104) }
```

If only the background color should be changed can be used:

```
.background{ background-color: rgb(212, 53,  
104) }
```

This example shows the color as background, it is applied via the CSS property "background".

To optimize and compress your CSS code, you can use our [online CSS compressor and optimizer](#) based on csstidy. If you want to create a linear or radial gradient as background or border, check our [CSS Gradient Generator](#).

Hey! You found this booklet interesting? Support Converting Colors with the new Membership Option!

The pro membership hides all ads, plus gives you double the colors in the color bucket, and more awesome pro features!

[Learn more, Memberships starting at \\$2.50/m!](#)

**Follow me
on Twitter!**

@ConvertingColor