

Converting Colors

CIELCh(49, 66.440, 9.656)

Have a look what the booklet for
CIELCh(49, 66.440, 9.656) contains.

CIELCh(49, 66.441, 9.646)	3
<i>Conversions</i>	4
<i>Details</i>	6
<i>Harmonies</i>	11
<i>Previews</i>	20
<i>Color Blindness Simulation</i>	23
<i>CSS Examples</i>	26

Color

CIELCh(49, 66.441, 9.646)

Conversions

Conversions Part 1

Format	Color
Hex	D73265
RGB	215, 50, 101
RGB Percent	84%, 20%, 40%
CMY	0.1580, 0.8051, 0.6048
CMYK	0.00, 0.77, 0.53, 0.16
HSL	341°, 67%, 52%
HSV	341°, 77%, 84%
XYZ	31.4072, 17.5941, 13.9962
YIQ	105.1490, 81.9690, 50.8410

Conversions

Conversions Part 2

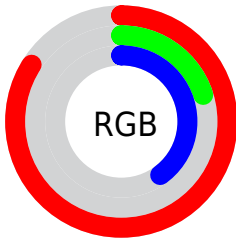
Format	Color
R_{YB}	215, 50, 101
Decimal	14103141
CIE _{Lab}	49.00, 65.50, 11.13
CIE _{LCh}	49, 66.441, 9.646
Yxy	17.5941, 0.4985, 0.2793
Android (android.graphics.Color)	4292293221 (0xFFD73265)
YUV	105.1490, -2.0455, 96.3393
Hunter-Lab	41.9453, 60.2504, 9.5780

Details

The CIELCh color **49, 66.441, 9.646** is a dark color, and the websafe version is hex **CC3366**. The color can be described as dark muted rose. A complement of this color would be **77, 54.713, 165.607**, and the grayscale version is **44, 0.006, 296.813**.

A 20% lighter version of the original color is **66, 58.733, 5.433**, and **32, 58.657, 14.942** is the 20% darker color. If you saturate the color by 10%, you get **47, 71.733, 13.962**, and if you desaturate by 10%, it is **52, 59.662, 6.218**.

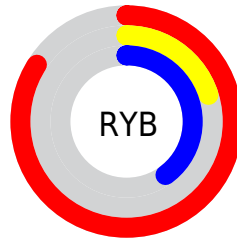
Distribution



Red (84%)

Green (20%)

Blue (40%)



Red (84%)

Yellow (20%)

Blue (40%)

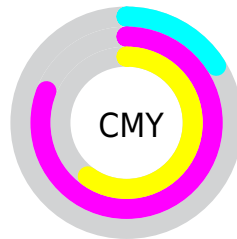


Cyan (0%)

Magenta (77%)

Yellow (53%)

Black (16%)



Cyan (16%)

Magenta (81%)

Yellow (60%)

Brightness & Saturation Gradients

These gradients show how the CIELCh color 49, 66.441, 9.646 changes by changing the brightness by 10 percent. The first figure shows a shift by +10% for each color and the second figure -10%.

Similar to the brightness gradients but the following saturation gradients show a change of the CIELCh color 49, 66.441, 9.646 by changing the saturation by 10% instead.

 49, 66.441, 9.646  49, 66.441, 9.646

 100, 66.441, 9.646  39, 66.441, 9.646

 69, 66.441, 9.646  29, 66.441, 9.646

 79, 66.441, 9.646  19, 66.441, 9.646


 89, 66.441, 9.646  9, 66.441, 9.646

 99, 66.441, 9.646  0, 66.441, 9.646

 49, 66.441, 9.646  49, 66.441, 9.646

 47, 71.733, 13.962  52, 59.662, 6.218

 46, 75.705, 19.182  56, 51.638, 3.514

 45, 76.917, 20.867  60, 42.776, 1.364

65, 33.491,
359.622

71, 24.118,
358.179

76, 14.888,
356.952

82, 5.938, 355.857

88, 2.657, 175.217

94, 10.874,
174.265

Harmonies

Complementary

The Complementary color scheme is a pair of colors which are on the opposite of each other on the color wheel.



49, 66.441, 9.646



77, 54.713, 165.607

Rectangle

The Rectangle color scheme consists of four colors that form a rectangle on the color wheel.



49, 66.441, 9.646



49, 66.441, 59.646



49, 66.441, 189.646



49, 66.441, 239.646

Sweetspot

The Sweet Spot groups the original color and five complimentary colors.



49, 66.438, 9.648



85, 23.616, 357.712



45, 93.432, 317.734



43, 16.437, 358.181



0, 0.000, 0.000



53, 0.007, 296.813

Same Dimension

The Same Dimension uses a secret algorithm to generate beautiful new colors.



49, 66.438, 9.648



55, 84.543, 17.024



52, 68.201, 41.088



42, 4.932, 356.135



36, 64.550, 19.882



5, 22.309, 5.742

Inverse Universe

The Inverse Universe completely reimagines the original color for something new.



49, 66.438, 9.648



55, 84.543, 17.024



69, 35.768, 225.195



42, 4.932, 356.135



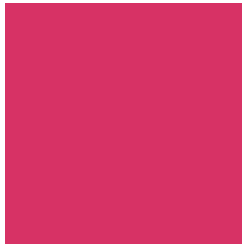
36, 64.550, 19.882



5, 22.309, 5.742

Previews

White Background



This preview shows how the CIELCh color 49, 66.441, 9.646 looks on a white background.

Color Contrast Check

Large Text (above 18pt) WCAG AA ✓ Pass

Any Text WCAG AA ✓ Pass

Large Text (above 18pt) WCAG AAA ✓ Pass

Any Text WCAG AAA × Fail

Black Background



This preview shows how the CIELCh color 49, 66.441, 9.646 looks on a black background.

Color Contrast Check

Large Text (above 18pt) WCAG AA ✓ Pass

Any Text WCAG AA ✓ Pass

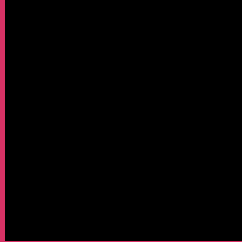
Large Text (above 18pt) WCAG AAA ✓ Pass

Any Text WCAG AAA × Fail

If you want to check with other color combinations, try the [Color Contrast Checker](#).

CIELCh 49, 66.441, 9.646

Background



This preview shows how black text looks on a background with the CIELCh color 49, 66.441, 9.646.

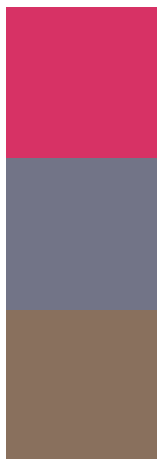


This preview shows how white text looks on a background with the CIELCh color 49, 66.441, 9.646.

Color Blindness Simulation

Color vision deficiency is a very complex topic, and I could not describe the different causes any better than Wikipedia does, so if you want to learn more, you should check out their [article about color blindness](#).

Dichromacy



Original Color

49, 66.441, 9.646

Protanopia

49, 11.167, 287.774

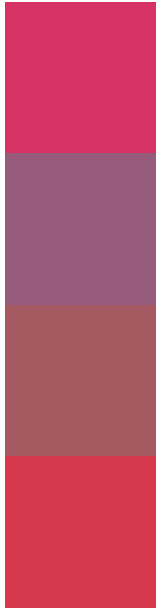
Deuteranopia

49, 15.835, 64.275



Tritanopia
49, 68.860, 29.999

Trichromacy



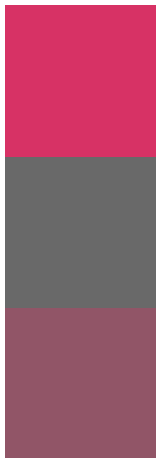
Original Color
49, 66.441, 9.646

Protanomaly
47, 29.571, 345.929

Deuteranomaly
47, 33.381, 17.397

Tritanomaly
49, 67.028, 23.047

Monochromacy



Original Color
49, 66.441, 9.646

Achromatopsia
44, 0.006, 296.813

Achromatomaly
44, 27.294, 0.851

CSS Examples

Text

The CSS property to change the color of the text to CIELCh 49, 66.441, 9.646 is called "color". The color property can be set on classes, ids or directly on the HTML element.

This example shows how text in the color `rgb(215, 50, 101)` looks like.

```
.text, #text, p{  
    color:rgb(215, 50, 101)  
}
```

If you want to add a text shadow in that color use the text-shadow property, you can generate a text shadow directly with our [CSS Text Shadow Generator](#).

Here you see how black text with a 4 pixel rgb(215, 50, 101) colored shadow looks like.

```
.shadow{ text-shadow: 4px 4px 2px rgb(215, 50, 101) }
```

Border

The CSS property to change the border of an element to CIELCh 49, 66.441, 9.646 is called "border". The border property can be set on classes, ids or directly on the HTML element.

This example shows the color as border, it can be applied via the CSS property "border" or "border-color".

```
.border, #border, table{ border:4px solid rgb(215, 50, 101) }
```

If only the border color should be changed use the property `border-color`.

```
.border{ border-color:rgb(215, 50, 101) }
```

If you want to add a box shadow in that color use:

Here you see how a box with a 4 pixel `rgb(215, 50, 101)` colored shadow looks like.

```
.boxshadow{ -moz-box-shadow:4px 4px 4px 4px rgb(215, 50, 101); -webkit-box-shadow:4px 4px 4px 4px rgb(215, 50, 101); box-shadow:4px 4px 4px 4px rgb(215, 50, 101) }
```

Background

The CSS property to change the background color of an element to CIELCh 49, 66.441, 9.646 is called "background". The background property can be set on classes, ids or directly on the HTML element.

```
.background, #background, body{  
background: rgb(215, 50, 101) }
```

If only the background color should be changed can be used:

```
.background{ background-color: rgb(215, 50,  
101) }
```

This example shows the color as background, it is applied via the CSS property "background".

To optimize and compress your CSS code, you can use our [online CSS compressor and optimizer](#) based on csstidy. If you want to create a linear or radial gradient as background or border, check our [CSS Gradient Generator](#).

Hey! You found this booklet interesting? Support Converting Colors with the new Membership Option!

The pro membership hides all ads, plus gives you double the colors in the color bucket, and more awesome pro features!

[Learn more, Memberships starting at \\$2.50/m!](#)

**Follow me
on Twitter!**

@ConvertingColor