

Converting Colors

CIELCh(49, 76.584, 9.698)

Have a look what the booklet for
CIELCh(49, 76.584, 9.698) contains.

CIELCh(49, 76.440, 9.376)	3
<i>Conversions</i>	4
<i>Details</i>	6
<i>Harmonies</i>	11
<i>Previews</i>	20
<i>Color Blindness Simulation</i>	23
<i>CSS Examples</i>	26

Color

CIELCh(49, 76.440, 9.376)

Conversions

Conversions Part 1

Format	Color
Hex	E30E63
RGB	227, 14, 99
RGB Percent	89%, 5%, 39%
CMY	0.1087, 0.9454, 0.6109
CMYK	0.00, 0.94, 0.56, 0.11
HSL	336°, 88%, 47%
HSV	336°, 94%, 89%
XYZ	34.1886, 17.5941, 13.4542
YIQ	87.3770, 99.6630, 71.5910

Conversions

Conversions Part 2

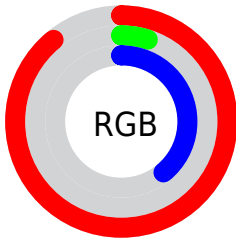
Format	Color
R_{YB}	227, 14, 99
Decimal	14880355
CIE _{Lab}	49.00, 75.42, 12.45
CIE _{LCh}	49, 76.440, 9.376
Yxy	17.5941, 0.5241, 0.2697
Android (android.graphics.Color)	4293070435 (0xFFE30E63)
YUV	87.3770, 5.7301, 122.4494
Hunter-Lab	41.9453, 72.0869, 10.3441

Details

The CIELCh color **49, 76.440, 9.376** is a dark color, and the websafe version is hex **FF0066**. The color can be described as dark washed rose. A complement of this color would be **80, 71.108, 155.845**, and the grayscale version is **37, 0.005, 296.813**.

A 20% lighter version of the original color is **63, 64.735, 3.264**, and **34, 62.218, 18.433** is the 20% darker color. If you saturate the color by 10%, you get **48, 77.867, 12.468**, and if you desaturate by 10%, it is **51, 73.210, 4.909**.

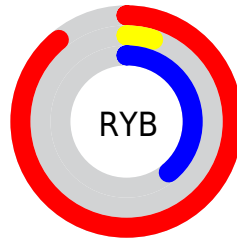
Distribution



Red (89%)

Green (5%)

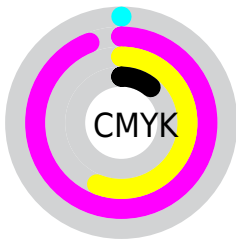
Blue (39%)



Red (89%)

Yellow (5%)

Blue (39%)

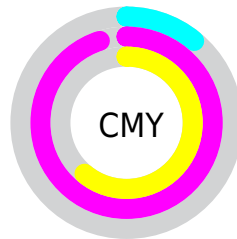


Cyan (0%)

Magenta (94%)

Yellow (56%)

Black (11%)



Cyan (11%)

Magenta (95%)

Yellow (61%)

Brightness & Saturation Gradients

These gradients show how the CIELCh color 49, 76.440, 9.376 changes by changing the brightness by 10 percent. The first figure shows a shift by +10% for each color and the second figure -10%.

Similar to the brightness gradients but the following saturation gradients show a change of the CIELCh color 49, 76.440, 9.376 by changing the saturation by 10% instead.

 49, 76.440, 9.376  49, 76.440, 9.376

 100, 76.440, 9.376  39, 76.440, 9.376

 69, 76.440, 9.376  29, 76.440, 9.376

 79, 76.440, 9.376  19, 76.440, 9.376

 89, 76.440, 9.376  9, 76.440, 9.376

 99, 76.440, 9.376  0, 76.440, 9.376

 49, 76.440, 9.376  49, 76.440, 9.376

 48, 77.867, 12.468  51, 73.210, 4.909

 53, 68.103, 1.353

 56, 61.148,

358.556

61, 52.721,
356.338

65, 43.322,
354.543

71, 33.415,
353.056

76, 23.360,
351.793

82, 13.401,
350.691

88, 3.688, 349.639

Harmonies

Complementary

The Complementary color scheme is a pair of colors which are on the opposite of each other on the color wheel.



49, 76.440, 9.376



80, 71.108, 155.845

Rectangle

The Rectangle color scheme consists of four colors that form a rectangle on the color wheel.



49, 76.440, 9.376



49, 76.440, 59.376



49, 76.440, 189.376



49, 76.440, 239.376

Sweetspot

The Sweet Spot groups the original color and five complimentary colors.



49, 76.436, 9.378



82, 30.199, 352.313



41, 109.843, 314.692



41, 20.915, 352.873



0, 0.000, 0.000



53, 0.007, 296.813

Same Dimension

The Same Dimension uses a secret algorithm to generate beautiful new colors.



49, 76.436, 9.378



54, 85.010, 12.842



49, 90.548, 40.220



45, 5.490, 350.237



38, 64.878, 11.546



7, 26.910, 2.303

Inverse Universe

The Inverse Universe completely reimagines the original color for something new.



49, 76.436, 9.378



54, 85.010, 12.842



76, 40.724, 213.384



45, 5.490, 350.237



38, 64.878, 11.546



7, 26.910, 2.303

Previews

White Background



This preview shows how the CIELCh color 49, 76.440, 9.376 looks on a white background.

Color Contrast Check

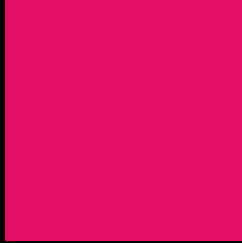
Large Text (above 18pt) WCAG AA ✓ Pass

Any Text WCAG AA ✓ Pass

Large Text (above 18pt) WCAG AAA ✓ Pass

Any Text WCAG AAA × Fail

Black Background



This preview shows how the CIELCh color 49, 76.440, 9.376 looks on a black background.

Color Contrast Check

Large Text (above 18pt) WCAG AA ✓ Pass

Any Text WCAG AA ✓ Pass

Large Text (above 18pt) WCAG AAA ✓ Pass

Any Text WCAG AAA × Fail

If you want to check with other color combinations, try the [Color Contrast Checker](#).

CIELCh 49, 76.440, 9.376

Background



This preview shows how black text looks on a background with the CIELCh color 49, 76.440, 9.376.

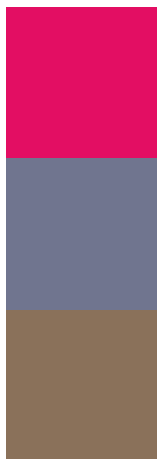


This preview shows how white text looks on a background with the CIELCh color 49, 76.440, 9.376.

Color Blindness Simulation

Color vision deficiency is a very complex topic, and I could not describe the different causes any better than Wikipedia does, so if you want to learn more, you should check out their [article about color blindness](#).

Dichromacy



Original Color

49, 76.355, 9.421

Protanopia

50, 15.303, 285.321

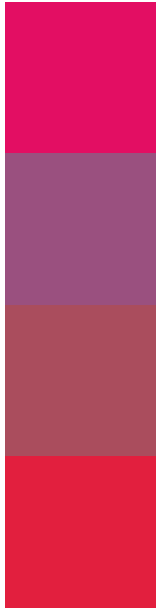
Deuteranopia

49, 17.629, 69.058



Tritanopia
49, 82.632, 35.013

Trichromacy



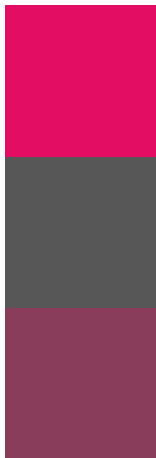
Original Color
49, 76.355, 9.421

Protanomaly
44, 39.163, 341.041

Deuteranomaly
45, 40.803, 13.257

Tritanomaly
49, 78.910, 26.231

Monochromacy



Original Color
49, 76.355, 9.421

Achromatopsia
37, 0.005, 296.813

Achromatomaly
37, 36.767, 356.622

CSS Examples

Text

The CSS property to change the color of the text to CIELCh 49, 76.440, 9.376 is called "color". The color property can be set on classes, ids or directly on the HTML element.

This example shows how text in the color `rgb(227, 14, 99)` looks like.

```
.text, #text, p{  
    color:rgb(227, 14, 99)  
}
```

If you want to add a text shadow in that color use the text-shadow property, you can generate a text shadow directly with our [CSS Text Shadow Generator](#).

Here you see how black text with a 4 pixel rgb(227, 14, 99) colored shadow looks like.

```
.shadow{ text-shadow: 4px 4px 2px rgb(227, 14, 99) }
```

Border

The CSS property to change the border of an element to CIELCh 49, 76.440, 9.376 is called "border". The border property can be set on classes, ids or directly on the HTML element.

This example shows the color as border, it can be applied via the CSS property "border" or "border-color".

```
.border, #border, table{ border:4px solid rgb(227, 14, 99) }
```

If only the border color should be changed use the property `border-color`.

```
.border{ border-color:rgb(227, 14, 99) }
```

If you want to add a box shadow in that color use:

Here you see how a box with a 4 pixel `rgb(227, 14, 99)` colored shadow looks like.

```
.boxshadow{ -moz-box-shadow:4px 4px 4px  
4px rgb(227, 14, 99); -webkit-box-  
shadow:4px 4px 4px 4px rgb(227, 14, 99);  
box-shadow:4px 4px 4px 4px rgb(227, 14,  
99) }
```

Background

The CSS property to change the background color of an element to CIELCh 49, 76.440, 9.376 is called "background". The background property can be set on classes, ids or directly on the HTML element.

```
.background, #background, body{  
background: rgb(227, 14, 99) }
```

If only the background color should be changed can be used:

```
.background{ background-color: rgb(227, 14,  
99) }
```

This example shows the color as background, it is applied via the CSS property "background".

To optimize and compress your CSS code, you can use our [online CSS compressor and optimizer](#) based on csstidy. If you want to create a linear or radial gradient as background or border, check our [CSS Gradient Generator](#).

Hey! You found this booklet interesting? Support Converting Colors with the new Membership Option!

The pro membership hides all ads, plus gives you double the colors in the color bucket, and more awesome pro features!

[Learn more, Memberships starting at \\$2.50/m!](#)

**Follow me
on Twitter!**

@ConvertingColor