

Converting Colors

CIELCh(50, 19.032, 67.495)

Have a look what the booklet for
CIELCh(50, 19.032, 67.495) contains.

CIELCh(50, 19.443, 67.966)	3
<i>Conversions</i>	4
<i>Details</i>	6
<i>Harmonies</i>	11
<i>Previews</i>	20
<i>Color Blindness Simulation</i>	23
<i>CSS Examples</i>	26

Color

CIELCh(50, 19.443, 67.966)

Conversions

Conversions Part 1

Format	Color
Hex	8E7259
RGB	142, 114, 89
RGB Percent	56%, 45%, 35%
CMY	0.4442, 0.5540, 0.6520
CMYK	0.00, 0.20, 0.37, 0.44
HSL	28°, 23%, 45%
HSV	28°, 37%, 56%
XYZ	18.8878, 18.4187, 11.9553
YIQ	119.5220, 24.7130, -1.8390

Conversions

Conversions Part 2

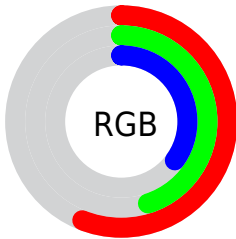
Format	Color
R_{YB}	142, 136, 89
Decimal	9335385
CIE Lab	50.00, 7.29, 18.02
CIE LCh	50, 19.443, 67.966
Yxy	18.4187, 0.3834, 0.3739
Android (android.graphics.Color)	4287525465 (0xFF8E7259)
YUV	119.5220, -15.0473, 19.7132
Hunter-Lab	42.9170, 3.4534, 13.5255

Details

The CIELCh color **50, 19.443, 67.966** is a dark color, and the websafe version is hex **996666**. A complement of this color would be **48, 17.226, 258.227**, and the grayscale version is **50, 0.007, 296.813**.

A 20% lighter version of the original color is **70, 19.622, 68.127**, and **30, 19.365, 68.323** is the 20% darker color. If you saturate the color by 10%, you get **48, 25.273, 66.816**, and if you desaturate by 10%, it is **52, 13.882, 69.129**.

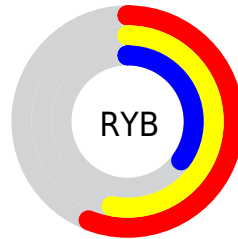
Distribution



Red (56%)

Green (45%)

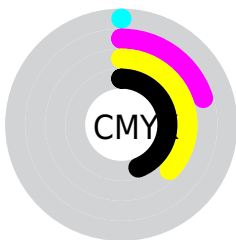
Blue (35%)



Red (56%)

Yellow (53%)

Blue (35%)

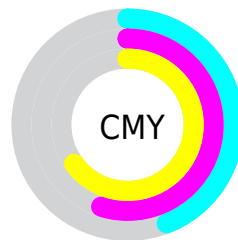


Cyan (0%)

Magenta (20%)

Yellow (37%)

Black (44%)



Cyan (44%)

Magenta (55%)

Yellow (65%)

Brightness & Saturation Gradients

These gradients show how the CIELCh color 50, 19.443, 67.966 changes by changing the brightness by 10 percent. The first figure shows a shift by +10% for each color and the second figure -10%.

Similar to the brightness gradients but the following saturation gradients show a change of the CIELCh color 50, 19.443, 67.966 by changing the saturation by 10% instead.

■ 50, 19.443, 67.966

■ 50, 19.443, 67.966

■ 100, 19.443,
67.966

■ 40, 19.443, 67.966

■ 70, 19.443, 67.966

■ 30, 19.443, 67.966

■ 80, 19.443, 67.966

■ 20, 19.443, 67.966

■ 90, 19.443, 67.966

■ 10, 19.443, 67.966

■ 0, 19.443, 67.966

■ 50, 19.443, 67.966

■ 50, 19.443, 67.966

■ 48, 25.273, 66.816

■ 52, 13.882, 69.129

■ 46, 31.339, 65.653

■ 55, 8.591, 70.277

■ 43, 37.546, 64.455

■ 57, 3.556, 71.380

41, 43.683, 63.145

60, 1.242, 252.846

40, 49.327, 61.554

62, 5.827, 253.768

38, 54.088, 59.583

65, 10.222,
254.830

37, 55.453, 59.205

67, 14.448,
255.871

70, 18.524,
256.879

72, 22.469,
257.848

Harmonies

Complementary

The Complementary color scheme is a pair of colors which are on the opposite of each other on the color wheel.



50, 19.443, 67.966



48, 17.226, 258.227

Rectangle

The Rectangle color scheme consists of four colors that form a rectangle on the color wheel.



50, 19.443, 67.966



50, 19.443, 117.966



50, 19.443, 247.966



50, 19.443, 297.966

Sweetspot

The Sweet Spot groups the original color and five complimentary colors.



50, 19.443, 67.972



71, 6.614, 70.967



44, 27.002, 345.268



37, 4.441, 70.838



88, 0.010, 296.813



39, 0.006, 296.813

Same Dimension

The Same Dimension uses a secret algorithm to generate beautiful new colors.



50, 19.443, 67.972



62, 29.547, 66.982



57, 28.614, 105.210



29, 2.751, 71.190



36, 53.520, 59.386



1, 1.825, 72.299

Inverse Universe

The Inverse Universe completely reimagines the original color for something new.



48, 17.226, 258.227



58, 25.367, 260.208



40, 31.172, 293.634



29, 2.685, 253.494



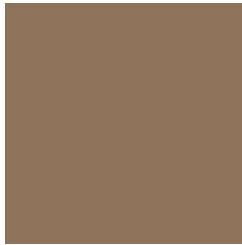
30, 41.542, 279.842



1, 1.825, 252.313

Previews

White Background



This preview shows how the CIELCh color 50, 19.443, 67.966 looks on a white background.

Color Contrast Check

Large Text (above 18pt) WCAG AA ✓ Pass

Any Text WCAG AA × Fail

Large Text (above 18pt) WCAG AAA × Fail

Any Text WCAG AAA × Fail

Black Background



This preview shows how the CIE LCh color 50, 19.443, 67.966 looks on a black background.

Color Contrast Check

Large Text (above 18pt) WCAG AA ✓ Pass

Any Text WCAG AA ✓ Pass

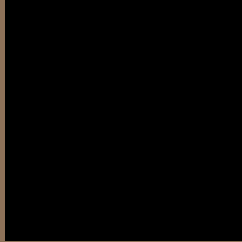
Large Text (above 18pt) WCAG AAA ✓ Pass

Any Text WCAG AAA × Fail

If you want to check with other color combinations, try the [Color Contrast Checker](#).

CIELCh 50, 19.443, 67.966

Background



This preview shows how black text looks on a background with the CIELCh color 50, 19.443, 67.966.



This preview shows how white text looks on a background with the CIELCh color 50, 19.443, 67.966.

Color Blindness Simulation

Color vision deficiency is a very complex topic, and I could not describe the different causes any better than Wikipedia does, so if you want to learn more, you should check out their [article about color blindness](#).

Dichromacy



Original Color


50, 19.443, 67.966

Protanopia

50, 16.627, 95.805

Deuteranopia

50, 19.138, 68.971



Tritanopia
50, 15.198, 3.563

Trichromacy



Original Color
50, 19.443, 67.966

Protanomaly
50, 17.106, 85.186

Deuteranomaly
50, 19.138, 68.971

Tritanomaly
50, 14.378, 30.246

Monochromacy



Original Color
50, 19.443, 67.966

Achromatopsia
50, 0.007, 296.813

Achromatomaly
50, 6.723, 70.774

CSS Examples

Text

The CSS property to change the color of the text to CIELCh 50, 19.443, 67.966 is called "color". The color property can be set on classes, ids or directly on the HTML element.

This example shows how text in the color `rgb(142, 114, 89)` looks like.

```
.text, #text, p{  
    color:rgb(142, 114, 89)  
}
```

If you want to add a text shadow in that color use the text-shadow property, you can generate a text shadow directly with our [CSS Text Shadow Generator](#).

Here you see how black text with a 4 pixel rgb(142, 114, 89) colored shadow looks like.

```
.shadow{ text-shadow: 4px 4px 2px rgb(142, 114, 89) }
```

Border

The CSS property to change the border of an element to CIELCh 50, 19.443, 67.966 is called "border". The border property can be set on classes, ids or directly on the HTML element.

This example shows the color as border, it can be applied via the CSS property "border" or "border-color".

```
.border, #border, table{ border:4px solid rgb(142, 114, 89) }
```

If only the border color should be changed use the property `border-color`.

```
.border{ border-color:rgb(142, 114, 89) }
```

If you want to add a box shadow in that color use:

Here you see how a box with a 4 pixel `rgb(142, 114, 89)` colored shadow looks like.

```
.boxshadow{ -moz-box-shadow:4px 4px 4px  
4px rgb(142, 114, 89); -webkit-box-  
shadow:4px 4px 4px 4px rgb(142, 114, 89);  
box-shadow:4px 4px 4px 4px rgb(142, 114,  
89) }
```

Background

The CSS property to change the background color of an element to CIELCh 50, 19.443, 67.966 is called "background". The background property can be set on classes, ids or directly on the HTML element.

```
.background, #background, body{  
background: rgb(142, 114, 89) }
```

If only the background color should be changed can be used:

```
.background{ background-color: rgb(142,  
114, 89) }
```

This example shows the color as background, it is applied via the CSS property "background".

To optimize and compress your CSS code, you can use our [online CSS compressor and optimizer](#) based on csstidy. If you want to create a linear or radial gradient as background or border, check our [CSS Gradient Generator](#).

Hey! You found this booklet interesting? Support Converting Colors with the new Membership Option!

The pro membership hides all ads, plus gives you double the colors in the color bucket, and more awesome pro features!

[Learn more, Memberships starting at \\$2.50/m!](#)

**Follow me
on Twitter!**

@ConvertingColor