

Converting Colors

CIELCh(50, 22.907, 57.829)

Have a look what the booklet for
CIELCh(50, 22.907, 57.829) contains.

CIELCh(50, 22.907, 57.829)	3
<i>Conversions</i>	4
<i>Details</i>	6
<i>Harmonies</i>	11
<i>Previews</i>	20
<i>Color Blindness Simulation</i>	23
<i>CSS Examples</i>	26

Color

CIELCh(50, 22.907, 57.829)

Conversions

Conversions Part 1

Format	Color
Hex	966F57
RGB	150, 111, 87
RGB Percent	59%, 44%, 34%
CMY	0.4133, 0.5661, 0.6602
CMYK	0.00, 0.26, 0.42, 0.41
HSL	23°, 27%, 46%
HSV	23°, 42%, 59%
XYZ	19.8560, 18.4187, 11.4506
YIQ	119.9250, 30.9480, 0.8040

Conversions

Conversions Part 2

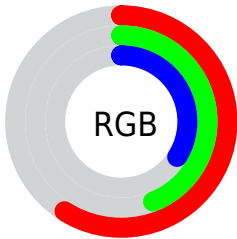
Format	Color
R _Y B	150, 126, 87
Decimal	9858903
CIE Lab	50.00, 12.20, 19.39
CIE LCh	50, 22.907, 57.829
Yxy	18.4187, 0.3993, 0.3704
Android (android.graphics.Color)	4288048983 (0xFF966F57)
YUV	119.9250, -16.2320, 26.3758
Hunter-Lab	42.9170, 7.4802, 14.2227

Details

The CIELCh color **50, 22.907, 57.829** is a dark color, and the websafe version is hex **996666**. A complement of this color would be **51, 18.604, 247.736**, and the grayscale version is **50, 0.007, 296.813**.

A 20% lighter version of the original color is **70, 23.057, 58.005**, and **30, 22.944, 58.005** is the 20% darker color. If you saturate the color by 10%, you get **47, 29.293, 57.062**, and if you desaturate by 10%, it is **53, 16.892, 58.658**.

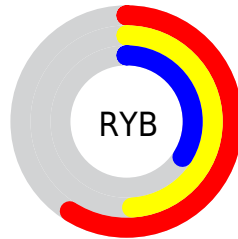
Distribution



Red (59%)

Green (44%)

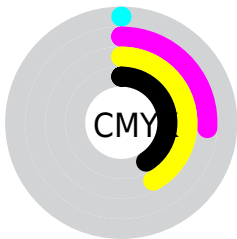
Blue (34%)



Red (59%)

Yellow (49%)

Blue (34%)

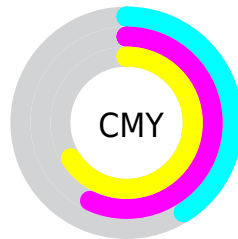


Cyan (0%)

Magenta (26%)

Yellow (42%)

Black (41%)



Cyan (41%)

Magenta (57%)

Yellow (66%)

Brightness & Saturation Gradients

These gradients show how the CIELCh color 50, 22.907, 57.829 changes by changing the brightness by 10 percent. The first figure shows a shift by +10% for each color and the second figure -10%.

Similar to the brightness gradients but the following saturation gradients show a change of the CIELCh color 50, 22.907, 57.829 by changing the saturation by 10% instead.

■ 50, 22.907, 57.829

■ 50, 22.907, 57.829

■ 100, 22.907,
57.829

■ 40, 22.907, 57.829

■ 70, 22.907, 57.829

■ 30, 22.907, 57.829

■ 80, 22.907, 57.829

■ 20, 22.907, 57.829

■ 90, 22.907, 57.829

■ 10, 22.907, 57.829

■ 0, 22.907, 57.829

■ 50, 22.907, 57.829

■ 50, 22.907, 57.829

■ 47, 29.293, 57.062

■ 53, 16.892, 58.658

■ 45, 36.008, 56.333

■ 56, 11.249, 59.524

■ 42, 42.928, 55.604

■ 58, 5.959, 60.405

40, 49.758, 54.753

61, 0.991, 61.026

38, 55.896, 53.506

64, 3.686, 242.438

37, 60.420, 52.559

67, 8.104, 243.320

70, 12.294,
244.231

73, 16.283,
245.132

76, 20.095,
246.014

Harmonies

Complementary

The Complementary color scheme is a pair of colors which are on the opposite of each other on the color wheel.



50, 22.907, 57.829



51, 18.604, 247.736

Rectangle

The Rectangle color scheme consists of four colors that form a rectangle on the color wheel.



50, 22.907, 57.829



50, 22.907, 107.829



50, 22.907, 237.829



50, 22.907, 287.829

Sweetspot

The Sweet Spot groups the original color and five complimentary colors.



50, 22.907, 57.835



74, 7.949, 60.302



45, 33.715, 340.518



38, 5.582, 60.123



89, 0.011, 296.813



41, 0.006, 296.813

Same Dimension

The Same Dimension uses a secret algorithm to generate beautiful new colors.



50, 22.907, 57.835



61, 34.609, 57.143



58, 30.613, 99.598



30, 2.735, 60.652



34, 56.723, 52.839



1, 2.334, 61.585

Inverse Universe

The Inverse Universe completely reimagines the original color for something new.



51, 18.604, 247.736



62, 26.687, 249.828



42, 32.995, 290.202



30, 2.634, 242.616



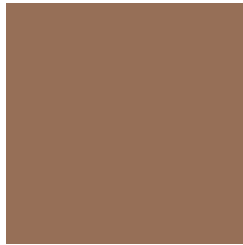
35, 35.249, 268.306



1, 2.334, 241.602

Previews

White Background



This preview shows how the CIELCh color 50, 22.907, 57.829 looks on a white background.

Color Contrast Check

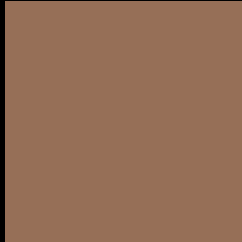
Large Text (above 18pt) WCAG AA ✓ Pass

Any Text WCAG AA × Fail

Large Text (above 18pt) WCAG AAA × Fail

Any Text WCAG AAA × Fail

Black Background



This preview shows how the CIELCh color 50, 22.907, 57.829 looks on a black background.

Color Contrast Check

Large Text (above 18pt) WCAG AA ✓ Pass

Any Text WCAG AA ✓ Pass

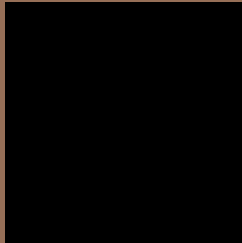
Large Text (above 18pt) WCAG AAA ✓ Pass

Any Text WCAG AAA × Fail

If you want to check with other color combinations, try the [Color Contrast Checker](#).

CIELCh 50, 22.907, 57.829

Background



This preview shows how black text looks on a background with the CIELCh color 50, 22.907, 57.829.



This preview shows how white text looks on a background with the CIELCh color 50, 22.907, 57.829.

Color Blindness Simulation

Color vision deficiency is a very complex topic, and I could not describe the different causes any better than Wikipedia does, so if you want to learn more, you should check out their [article about color blindness](#).

Dichromacy



Original Color

50, 22.907, 57.829

Protanopia

50, 17.291, 94.665

Deuteranopia

50, 20.572, 71.631



Tritanopia
50, 19.369, 8.114

Trichromacy



Original Color
50, 22.907, 57.829

Protanomaly
50, 18.177, 78.652

Deuteranomaly
50, 21.348, 66.973

Tritanomaly
50, 18.733, 26.895

Monochromacy



Original Color
50, 22.907, 57.829

Achromatopsia
50, 0.007, 296.813

Achromatomaly
50, 7.915, 61.136

CSS Examples

Text

The CSS property to change the color of the text to CIELCh 50, 22.907, 57.829 is called "color". The color property can be set on classes, ids or directly on the HTML element.

This example shows how text in the color `rgb(150, 111, 87)` looks like.

```
.text, #text, p{  
    color:rgb(150, 111, 87)  
}
```

If you want to add a text shadow in that color use the text-shadow property, you can generate a text shadow directly with our [CSS Text Shadow Generator](#).

Here you see how black text with a 4 pixel rgb(150, 111, 87) colored shadow looks like.

```
.shadow{ text-shadow: 4px 4px 2px rgb(150, 111, 87) }
```

Border

The CSS property to change the border of an element to CIELCh 50, 22.907, 57.829 is called "border". The border property can be set on classes, ids or directly on the HTML element.

This example shows the color as border, it can be applied via the CSS property "border" or "border-color".

```
.border, #border, table{ border:4px solid rgb(150, 111, 87) }
```

If only the border color should be changed use the property `border-color`.

```
.border{ border-color:rgb(150, 111, 87) }
```

If you want to add a box shadow in that color use:

Here you see how a box with a 4 pixel `rgb(150, 111, 87)` colored shadow looks like.

```
.boxshadow{ -moz-box-shadow:4px 4px 4px  
4px rgb(150, 111, 87); -webkit-box-  
shadow:4px 4px 4px 4px rgb(150, 111, 87);  
box-shadow:4px 4px 4px 4px rgb(150, 111,  
87) }
```

Background

The CSS property to change the background color of an element to CIELCh 50, 22.907, 57.829 is called "background". The background property can be set on classes, ids or directly on the HTML element.

```
.background, #background, body{  
background: rgb(150, 111, 87) }
```

If only the background color should be changed can be used:

```
.background{ background-color: rgb(150,  
111, 87) }
```

This example shows the color as background, it is applied via the CSS property "background".

To optimize and compress your CSS code, you can use our [online CSS compressor and optimizer](#) based on csstidy. If you want to create a linear or radial gradient as background or border, check our [CSS Gradient Generator](#).

Hey! You found this booklet interesting? Support Converting Colors with the new Membership Option!

The pro membership hides all ads, plus gives you double the colors in the color bucket, and more awesome pro features!

[Learn more, Memberships starting at \\$2.50/m!](#)

**Follow me
on Twitter!**

@ConvertingColor