

Converting Colors

CIELCh(50, 32.624, 23.702)

Have a look what the booklet for
CIELCh(50, 32.624, 23.702) contains.

CIELCh(50, 32.629, 23.707)	3
<i>Conversions</i>	4
<i>Details</i>	6
<i>Harmonies</i>	11
<i>Previews</i>	20
<i>Color Blindness Simulation</i>	23
<i>CSS Examples</i>	26

Color

CIELCh(50, 32.629, 23.707)

Conversions

Conversions Part 1

Format	Color
Hex	AC6262
RGB	172, 98, 98
RGB Percent	67%, 38%, 38%
CMY	0.3251, 0.6153, 0.6153
CMYK	0.00, 0.43, 0.43, 0.33
HSL	0°, 31%, 53%
HSV	0°, 43%, 67%
XYZ	23.6213, 18.4187, 13.8876
YIQ	120.1260, 44.1040, 15.6880

Conversions

Conversions Part 2

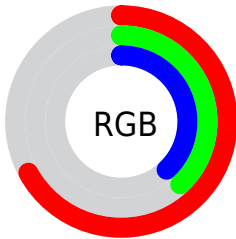
Format	Color
R_{YB}	172, 98, 98
Decimal	11297378
CIE Lab	50.00, 29.88, 13.12
CIE LCh	50, 32.629, 23.707
Yxy	18.4187, 0.4224, 0.3293
Android (android.graphics.Color)	4289487458 (0xFFAC6262)
YUV	120.1260, -10.9081, 45.4935
Hunter-Lab	42.9170, 23.1408, 10.8561

Details

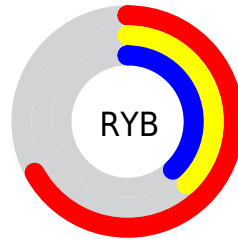
The CIELCh color **50, 32.629, 23.707** is a dark color, and the websafe version is hex **996666**. A complement of this color would be **66, 24.103, 197.437**, and the grayscale version is **51, 0.007, 296.813**.

A 20% lighter version of the original color is **70, 32.667, 23.486**, and **30, 32.832, 23.196** is the 20% darker color. If you saturate the color by 10%, you get **46, 41.400, 25.627**, and if you desaturate by 10%, it is **54, 24.203, 22.237**.

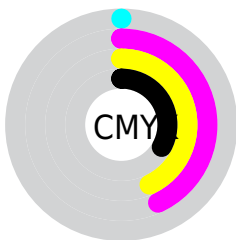
Distribution



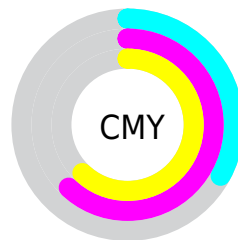
- Red (67%)
- Green (38%)
- Blue (38%)



- Red (67%)
- Yellow (38%)
- Blue (38%)



- Cyan (0%)
- Magenta (43%)
- Yellow (43%)
- Black (33%)



- Cyan (33%)
- Magenta (62%)
- Yellow (62%)

Brightness & Saturation Gradients

These gradients show how the CIELCh color 50, 32.629, 23.707 changes by changing the brightness by 10 percent. The first figure shows a shift by +10% for each color and the second figure -10%.

Similar to the brightness gradients but the following saturation gradients show a change of the CIELCh color 50, 32.629, 23.707 by changing the saturation by 10% instead.

■ 50, 32.629, 23.707

■ 50, 32.629, 23.707

■ 100, 32.629,
23.707

■ 40, 32.629, 23.707

■ 70, 32.629, 23.707

■ 30, 32.629, 23.707

■ 80, 32.629, 23.707

■ 20, 32.629, 23.707

■ 90, 32.629, 23.707

■ 10, 32.629, 23.707

■ 0, 32.629, 23.707

■ 50, 32.629, 23.707

■ 50, 32.629, 23.707

■ 46, 41.400, 25.627

■ 54, 24.203, 22.237

■ 42, 50.313, 28.088

■ 59, 16.256, 21.102

■ 40, 59.069, 31.139

■ 64, 8.842, 20.209

37, 67.235, 34.629

69, 1.966, 19.341

36, 73.952, 37.934

74, 4.398, 199.176

36, 77.784, 39.915

79, 10.293,
198.693

84, 15.766,
198.341

89, 20.867,
198.062

94, 25.640,
197.836

Harmonies

Complementary

The Complementary color scheme is a pair of colors which are on the opposite of each other on the color wheel.



50, 32.629, 23.707



66, 24.103, 197.437

Rectangle

The Rectangle color scheme consists of four colors that form a rectangle on the color wheel.



50, 32.629, 23.707



50, 32.629, 73.707



50, 32.629, 203.707



50, 32.629, 253.707

Sweetspot

The Sweet Spot groups the original color and five complimentary colors.



50, 32.627, 23.711



81, 10.977, 20.228



52, 49.296, 326.690



42, 7.736, 20.405



95, 0.011, 296.813



47, 0.006, 296.813

Same Dimension

The Same Dimension uses a secret algorithm to generate beautiful new colors.



50, 32.627, 23.711



60, 50.388, 25.610



59, 26.874, 70.125



34, 3.817, 19.917



31, 69.981, 39.448



2, 7.801, 19.412

Inverse Universe

The Inverse Universe completely reimagines the original color for something new.



66, 24.103, 197.437



83, 34.336, 197.112



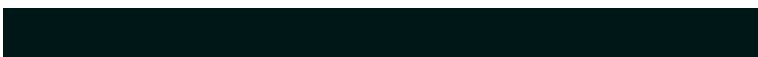
55, 23.793, 262.900



36, 3.603, 198.998



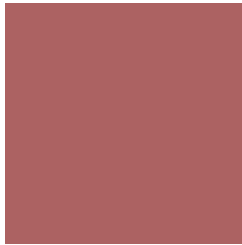
56, 33.803, 196.401



6, 7.800, 199.434

Previews

White Background



This preview shows how the CIELCh color 50, 32.629, 23.707 looks on a white background.

Color Contrast Check

Large Text (above 18pt) WCAG AA ✓ Pass

Any Text WCAG AA ✗ Fail

Large Text (above 18pt) WCAG AAA ✗ Fail

Any Text WCAG AAA ✗ Fail

Black Background



This preview shows how the CIE LCh color 50, 32.629, 23.707 looks on a black background.

Color Contrast Check

Large Text (above 18pt) WCAG AA ✓ Pass

Any Text WCAG AA ✓ Pass

Large Text (above 18pt) WCAG AAA ✓ Pass

Any Text WCAG AAA × Fail

If you want to check with other color combinations, try the [Color Contrast Checker](#).

CIELCh 50, 32.629, 23.707

Background



This preview shows how black text looks on a background with the CIELCh color 50, 32.629, 23.707.

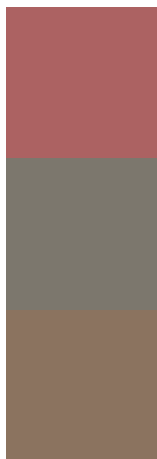


This preview shows how white text looks on a background with the CIELCh color 50, 32.629, 23.707.

Color Blindness Simulation

Color vision deficiency is a very complex topic, and I could not describe the different causes any better than Wikipedia does, so if you want to learn more, you should check out their [article about color blindness](#).

Dichromacy



Original Color

50, 32.629, 23.707

Protanopia

50, 6.176, 89.657

Deuteranopia

50, 15.873, 66.789



Tritanopia
50, 32.946, 17.019

Trichromacy



Original Color
50, 32.629, 23.707

Protanomaly
50, 13.428, 35.796

Deuteranomaly
50, 20.342, 42.918

Tritanomaly
50, 33.070, 19.002

Monochromacy



Original Color
50, 32.629, 23.707

Achromatopsia
50, 0.007, 296.813

Achromatomaly
50, 11.358, 20.720

CSS Examples

Text

The CSS property to change the color of the text to CIELCh 50, 32.629, 23.707 is called "color". The color property can be set on classes, ids or directly on the HTML element.

This example shows how text in the color `rgb(172, 98, 98)` looks like.

```
.text, #text, p{  
    color:rgb(172, 98, 98)  
}
```

If you want to add a text shadow in that color use the text-shadow property, you can generate a text shadow directly with our [CSS Text Shadow Generator](#).

Here you see how black text with a 4 pixel rgb(172, 98, 98) colored shadow looks like.

```
.shadow{ text-shadow: 4px 4px 2px rgb(172, 98, 98) }
```

Border

The CSS property to change the border of an element to CIELCh 50, 32.629, 23.707 is called "border". The border property can be set on classes, ids or directly on the HTML element.

This example shows the color as border, it can be applied via the CSS property "border" or "border-color".

```
.border, #border, table{ border:4px solid rgb(172, 98, 98) }
```

If only the border color should be changed use the property border-color.

```
.border{ border-color:rgb(172, 98, 98) }
```

If you want to add a box shadow in that color use:

Here you see how a box with a 4 pixel rgb(172, 98, 98) colored shadow looks like.

```
.boxshadow{ -moz-box-shadow:4px 4px 4px  
4px rgb(172, 98, 98); -webkit-box-  
shadow:4px 4px 4px 4px rgb(172, 98, 98);  
box-shadow:4px 4px 4px 4px rgb(172, 98,  
98) }
```

Background

The CSS property to change the background color of an element to CIELCh 50, 32.629, 23.707 is called "background". The background property can be set on classes, ids or directly on the HTML element.

```
.background, #background, body{  
background: rgb(172, 98, 98) }
```

If only the background color should be changed can be used:

```
.background{ background-color: rgb(172, 98,  
98) }
```

This example shows the color as background, it is applied via the CSS property "background".

To optimize and compress your CSS code, you can use our [online CSS compressor and optimizer](#) based on csstidy. If you want to create a linear or radial gradient as background or border, check our [CSS Gradient Generator](#).

Hey! You found this booklet interesting? Support Converting Colors with the new Membership Option!

The pro membership hides all ads, plus gives you double the colors in the color bucket, and more awesome pro features!

[Learn more, Memberships starting at \\$2.50/m!](#)

**Follow me
on Twitter!**

@ConvertingColor