

Converting Colors

CIELCh(50, 33.026, 20.993)

Have a look what the booklet for
CIELCh(50, 33.026, 20.993) contains.

CIELCh(50, 33.239, 20.965)	3
<i>Conversions</i>	4
<i>Details</i>	6
<i>Harmonies</i>	11
<i>Previews</i>	20
<i>Color Blindness Simulation</i>	23
<i>CSS Examples</i>	26

Color

CIELCh(50, 33.239, 20.965)

Conversions

Conversions Part 1

Format	Color
Hex	AD6164
RGB	173, 97, 100
RGB Percent	68%, 38%, 39%
CMY	0.3207, 0.6188, 0.6071
CMYK	0.00, 0.44, 0.42, 0.32
HSL	358°, 32%, 53%
HSV	358°, 44%, 68%
XYZ	23.8844, 18.4187, 14.4011
YIQ	120.0660, 44.3330, 17.0450

Conversions

Conversions Part 2

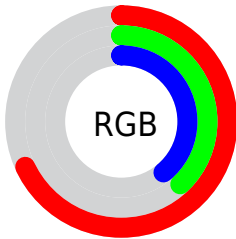
Format	Color
R_{YB}	173, 97, 100
Decimal	11362660
CIE Lab	50.00, 31.04, 11.89
CIE LCh	50, 33.239, 20.965
Yxy	18.4187, 0.4212, 0.3248
Android (android.graphics.Color)	4289552740 (0xFFAD6164)
YUV	120.0660, -9.8925, 46.4231
Hunter-Lab	42.9170, 24.2352, 10.1467

Details

The CIELCh color **50, 33.239, 20.965** is a dark color, and the websafe version is hex **996666**. A complement of this color would be **66, 24.957, 193.509**, and the grayscale version is **51, 0.007, 296.813**.

A 20% lighter version of the original color is **70, 33.284, 20.833**, and **30, 33.397, 20.457** is the 20% darker color. If you saturate the color by 10%, you get **46, 41.837, 23.015**, and if you desaturate by 10%, it is **54, 24.898, 19.375**.

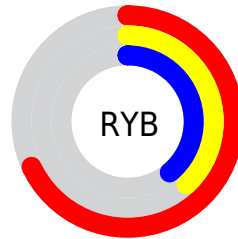
Distribution



Red (68%)

Green (38%)

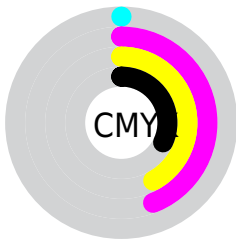
Blue (39%)



Red (68%)

Yellow (38%)

Blue (39%)

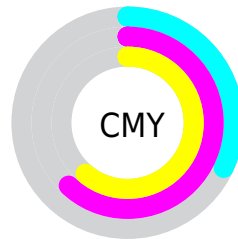


Cyan (0%)

Magenta (44%)

Yellow (42%)

Black (32%)



Cyan (32%)

Magenta (62%)

Yellow (61%)

Brightness & Saturation Gradients

These gradients show how the CIELCh color 50, 33.239, 20.965 changes by changing the brightness by 10 percent. The first figure shows a shift by +10% for each color and the second figure -10%.

Similar to the brightness gradients but the following saturation gradients show a change of the CIELCh color 50, 33.239, 20.965 by changing the saturation by 10% instead.

■ 50, 33.239, 20.965

■ 50, 33.239, 20.965

■ 100, 33.239,
20.965

■ 40, 33.239, 20.965

■ 70, 33.239, 20.965

■ 30, 33.239, 20.965

■ 80, 33.239, 20.965

■ 20, 33.239, 20.965

■ 90, 33.239, 20.965

■ 10, 33.239, 20.965

■ 0, 33.239, 20.965

■ 50, 33.239, 20.965

■ 50, 33.239, 20.965

■ 46, 41.837, 23.015

■ 54, 24.898, 19.375

■ 42, 50.474, 25.628

■ 59, 16.966, 18.127

■ 40, 58.865, 28.878

■ 64, 9.516, 17.128

 38, 66.660, 32.672

 69, 2.568, 16.209

 36, 73.269, 36.515


 74, 3.892, 195.896

 36, 76.497, 38.306

 79, 9.899, 195.303

 84, 15.495,
194.855

 89, 20.724,
194.485

 94, 25.628,
194.172

Harmonies

Complementary

The Complementary color scheme is a pair of colors which are on the opposite of each other on the color wheel.



50, 33.239, 20.965



66, 24.957, 193.509

Rectangle

The Rectangle color scheme consists of four colors that form a rectangle on the color wheel.



50, 33.239, 20.965



50, 33.239, 70.965



50, 33.239, 200.965



50, 33.239, 250.965

Sweetspot

The Sweet Spot groups the original color and five complimentary colors.



50, 33.237, 20.968



81, 10.971, 17.068



52, 49.970, 325.249



42, 7.727, 17.265



95, 0.011, 296.813



47, 0.006, 296.813

Same Dimension

The Same Dimension uses a secret algorithm to generate beautiful new colors.



50, 33.237, 20.968



59, 50.796, 23.023



58, 27.258, 64.877



34, 3.819, 16.723



31, 68.556, 37.860



2, 7.815, 16.735

Inverse Universe

The Inverse Universe completely reimagines the original color for something new.



50, 33.237, 20.968



59, 50.796, 23.023



56, 23.096, 257.247



34, 3.819, 16.723



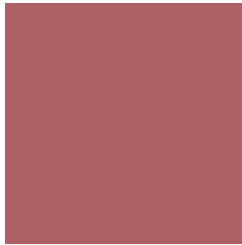
31, 68.556, 37.860



2, 7.815, 16.735

Previews

White Background



This preview shows how the CIELCh color 50, 33.239, 20.965 looks on a white background.

Color Contrast Check

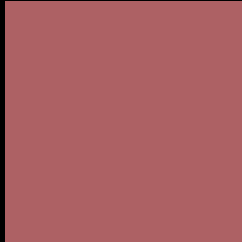
Large Text (above 18pt) WCAG AA ✓ Pass

Any Text WCAG AA ✓ Pass

Large Text (above 18pt) WCAG AAA ✓ Pass

Any Text WCAG AAA × Fail

Black Background



This preview shows how the CIE LCh color 50, 33.239, 20.965 looks on a black background.

Color Contrast Check

Large Text (above 18pt) WCAG AA ✓ Pass

Any Text WCAG AA ✓ Pass

Large Text (above 18pt) WCAG AAA ✓ Pass

Any Text WCAG AAA × Fail

If you want to check with other color combinations, try the [Color Contrast Checker](#).

CIELCh 50, 33.239, 20.965

Background



This preview shows how black text looks on a background with the CIELCh color 50, 33.239, 20.965.

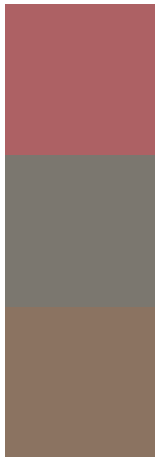


This preview shows how white text looks on a background with the CIELCh color 50, 33.239, 20.965.

Color Blindness Simulation

Color vision deficiency is a very complex topic, and I could not describe the different causes any better than Wikipedia does, so if you want to learn more, you should check out their [article about color blindness](#).

Dichromacy



Original Color

50, 33.239, 20.965

Protanopia

50, 4.935, 89.935

Deuteranopia

50, 14.983, 64.111



Tritanopia
50, 33.375, 17.174

Trichromacy



Original Color
50, 33.239, 20.965

Protanomaly
50, 13.075, 31.038

Deuteranomaly
50, 19.800, 40.031

Tritanomaly
50, 33.434, 18.153

Monochromacy



Original Color
50, 33.239, 20.965

Achromatopsia
50, 0.007, 296.813

Achromatomaly
50, 11.333, 17.802

CSS Examples

Text

The CSS property to change the color of the text to CIELCh 50, 33.239, 20.965 is called "color". The color property can be set on classes, ids or directly on the HTML element.

This example shows how text in the color `rgb(173, 97, 100)` looks like.

```
.text, #text, p{  
    color:rgb(173, 97, 100)  
}
```

If you want to add a text shadow in that color use the text-shadow property, you can generate a text shadow directly with our [CSS Text Shadow Generator](#).

Here you see how black text with a 4 pixel rgb(173, 97, 100) colored shadow looks like.

```
.shadow{ text-shadow: 4px 4px 2px rgb(173, 97, 100) }
```

Border

The CSS property to change the border of an element to CIELCh 50, 33.239, 20.965 is called "border". The border property can be set on classes, ids or directly on the HTML element.

This example shows the color as border, it can be applied via the CSS property "border" or "border-color".

```
.border, #border, table{ border:4px solid rgb(173, 97, 100) }
```

If only the border color should be changed use the property `border-color`.

```
.border{ border-color:rgb(173, 97, 100) }
```

If you want to add a box shadow in that color use:

Here you see how a box with a 4 pixel `rgb(173, 97, 100)` colored shadow looks like.

```
.boxshadow{ -moz-box-shadow:4px 4px 4px  
4px rgb(173, 97, 100); -webkit-box-  
shadow:4px 4px 4px 4px rgb(173, 97, 100);  
box-shadow:4px 4px 4px 4px rgb(173, 97,  
100) }
```

Background

The CSS property to change the background color of an element to CIELCh 50, 33.239, 20.965 is called "background". The background property can be set on classes, ids or directly on the HTML element.

```
.background, #background, body{  
background: rgb(173, 97, 100) }
```

If only the background color should be changed can be used:

```
.background{ background-color: rgb(173, 97,  
100) }
```

This example shows the color as background, it is applied via the CSS property "background".

To optimize and compress your CSS code, you can use our [online CSS compressor and optimizer](#) based on csstidy. If you want to create a linear or radial gradient as background or border, check our [CSS Gradient Generator](#).

Hey! You found this booklet interesting? Support Converting Colors with the new Membership Option!

The pro membership hides all ads, plus gives you double the colors in the color bucket, and more awesome pro features!

[Learn more, Memberships starting at \\$2.50/m!](#)

**Follow me
on Twitter!**

@ConvertingColor