

Converting Colors

CIELCh(50, 34.349, 27.305)

Have a look what the booklet for
CIELCh(50, 34.349, 27.305) contains.

CIELCh(50, 34.446, 26.712)	3
<i>Conversions</i>	4
<i>Details</i>	6
<i>Harmonies</i>	11
<i>Previews</i>	20
<i>Color Blindness Simulation</i>	23
<i>CSS Examples</i>	26

Color

CIELCh(50, 34.446, 26.712)

Conversions

Conversions Part 1

Format	Color
Hex	AE615E
RGB	174, 97, 94
RGB Percent	68%, 38%, 37%
CMY	0.3168, 0.6188, 0.6307
CMYK	0.00, 0.44, 0.46, 0.32
HSL	2°, 33%, 53%
HSV	2°, 46%, 68%
XYZ	23.8234, 18.4187, 12.9317
YIQ	119.6810, 46.8550, 15.3910

Conversions

Conversions Part 2

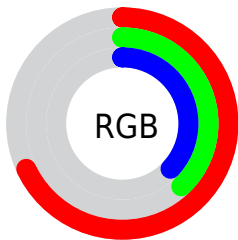
Format	Color
R_{YB}	174, 97, 94
Decimal	11428190
CIE _{Lab}	50.00, 30.77, 15.48
CIE _{LCh}	50, 34.446, 26.712
Yxy	18.4187, 0.4318, 0.3338
Android (android.graphics.Color)	4289618270 (0xFFAE615E)
YUV	119.6810, -12.6607, 47.6378
Hunter-Lab	42.9170, 23.9816, 12.1767

Details

The CIELCh color **50, 34.446, 26.712** is a dark color, and the websafe version is hex **CC6666**. A complement of this color would be **65, 24.629, 201.335**, and the grayscale version is **50, 0.007, 296.813**.

A 20% lighter version of the original color is **70, 34.433, 27.106**, and **30, 34.391, 26.616** is the 20% darker color. If you saturate the color by 10%, you get **46, 43.250, 28.510**, and if you desaturate by 10%, it is **54, 26.013, 25.340**.

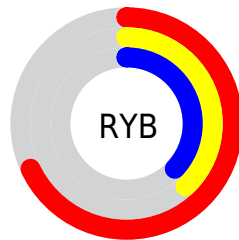
Distribution



Red (68%)

Green (38%)

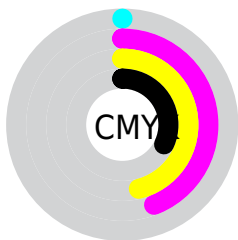
Blue (37%)



Red (68%)

Yellow (38%)

Blue (37%)

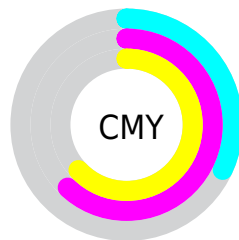


Cyan (0%)

Magenta (44%)

Yellow (46%)

Black (32%)



Cyan (32%)

Magenta (62%)

Yellow (63%)

Brightness & Saturation Gradients

These gradients show how the CIELCh color 50, 34.446, 26.712 changes by changing the brightness by 10 percent. The first figure shows a shift by +10% for each color and the second figure -10%.

Similar to the brightness gradients but the following saturation gradients show a change of the CIELCh color 50, 34.446, 26.712 by changing the saturation by 10% instead.

■ 50, 34.446, 26.712

■ 50, 34.446, 26.712

■ 100, 34.446,
26.712

■ 40, 34.446, 26.712

■ 70, 34.446, 26.712

■ 30, 34.446, 26.712

■ 80, 34.446, 26.712

■ 20, 34.446, 26.712

■ 90, 34.446, 26.712

■ 10, 34.446, 26.712

■ 0, 34.446, 26.712

■ 50, 34.446, 26.712

■ 50, 34.446, 26.712

■ 46, 43.250, 28.510

■ 54, 26.013, 25.340

■ 43, 52.230, 30.799

■ 59, 18.073, 24.294

■ 40, 61.077, 33.578

■ 63, 10.676, 23.491

■ 38, 69.260, 36.612

■ 68, 3.823, 22.817

■ 37, 75.697, 39.211

■ 73, 2.512, 202.703

■ 36, 77.997, 40.381

■ 78, 8.371, 202.227

■ 83, 13.803,
201.951

■ 88, 18.857,
201.751

■ 93, 23.577,
201.604

Harmonies

Complementary

The Complementary color scheme is a pair of colors which are on the opposite of each other on the color wheel.



50, 34.446, 26.712



65, 24.629, 201.335

Rectangle

The Rectangle color scheme consists of four colors that form a rectangle on the color wheel.



50, 34.446, 26.712



50, 34.446, 76.712



50, 34.446, 206.712



50, 34.446, 256.712

Sweetspot

The Sweet Spot groups the original color and five complimentary colors.



50, 34.444, 26.716



82, 11.549, 23.374



52, 51.768, 327.801



42, 8.106, 23.522



96, 0.011, 296.813



48, 0.006, 296.813

Same Dimension

The Same Dimension uses a secret algorithm to generate beautiful new colors.



50, 34.444, 26.716



60, 52.731, 28.516



60, 29.558, 73.061



34, 3.679, 23.046



31, 69.468, 40.022



2, 7.565, 22.043

Inverse Universe

The Inverse Universe completely reimagines the original color for something new.



65, 24.629, 201.335



82, 34.576, 201.276



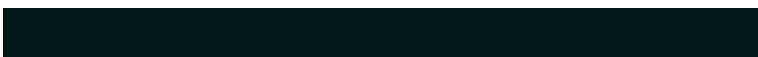
54, 26.669, 267.238



36, 3.469, 202.368



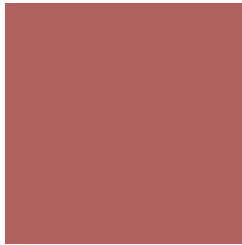
54, 32.140, 202.412



6, 7.389, 204.280

Previews

White Background



This preview shows how the CIELCh color 50, 34.446, 26.712 looks on a white background.

Color Contrast Check

Large Text (above 18pt) WCAG AA ✓ Pass

Any Text WCAG AA ✓ Pass

Large Text (above 18pt) WCAG AAA ✓ Pass

Any Text WCAG AAA × Fail

Black Background



This preview shows how the CIE LCh color 50, 34.446, 26.712 looks on a black background.

Color Contrast Check

Large Text (above 18pt) WCAG AA ✓ Pass

Any Text WCAG AA ✓ Pass

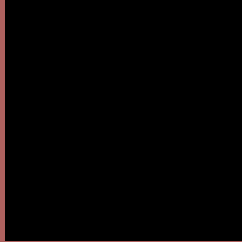
Large Text (above 18pt) WCAG AAA ✓ Pass

Any Text WCAG AAA × Fail

If you want to check with other color combinations, try the [Color Contrast Checker](#).

CIELCh 50, 34.446, 26.712

Background



This preview shows how black text looks on a background with the CIELCh color 50, 34.446, 26.712.

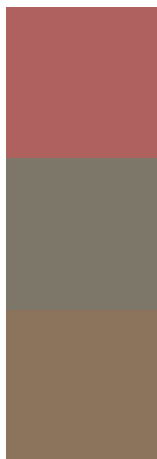


This preview shows how white text looks on a background with the CIELCh color 50, 34.446, 26.712.

Color Blindness Simulation

Color vision deficiency is a very complex topic, and I could not describe the different causes any better than Wikipedia does, so if you want to learn more, you should check out their [article about color blindness](#).

Dichromacy



Original Color

50, 34.446, 26.712

Protanopia

50, 8.528, 91.794

Deuteranopia

50, 18.036, 70.139



Tritanopia
50, 34.286, 17.522

Trichromacy



Original Color
50, 34.446, 26.712

Protanomaly
50, 15.228, 43.144

Deuteranomaly
50, 21.990, 47.680

Tritanomaly
50, 34.512, 20.367

Monochromacy



Original Color
50, 34.446, 26.712

Achromatopsia
50, 0.007, 296.813

Achromatomaly
50, 11.846, 23.562

CSS Examples

Text

The CSS property to change the color of the text to CIELCh 50, 34.446, 26.712 is called "color". The color property can be set on classes, ids or directly on the HTML element.

This example shows how text in the color `rgb(174, 97, 94)` looks like.

```
.text, #text, p{  
    color:rgb(174, 97, 94)  
}
```

If you want to add a text shadow in that color use the text-shadow property, you can generate a text shadow directly with our [CSS Text Shadow Generator](#).

Here you see how black text with a 4 pixel rgb(174, 97, 94) colored shadow looks like.

```
.shadow{ text-shadow: 4px 4px 2px rgb(174, 97, 94) }
```

Border

The CSS property to change the border of an element to CIELCh 50, 34.446, 26.712 is called "border". The border property can be set on classes, ids or directly on the HTML element.

This example shows the color as border, it can be applied via the CSS property "border" or "border-color".

```
.border, #border, table{ border:4px solid rgb(174, 97, 94) }
```

If only the border color should be changed use the property border-color.

```
.border{ border-color:rgb(174, 97, 94) }
```

If you want to add a box shadow in that color use:

Here you see how a box with a 4 pixel rgb(174, 97, 94) colored shadow looks like.

```
.boxshadow{ -moz-box-shadow:4px 4px 4px  
4px rgb(174, 97, 94); -webkit-box-  
shadow:4px 4px 4px 4px rgb(174, 97, 94);  
box-shadow:4px 4px 4px 4px rgb(174, 97,  
94) }
```

Background

The CSS property to change the background color of an element to CIELCh 50, 34.446, 26.712 is called "background". The background property can be set on classes, ids or directly on the HTML element.

```
.background, #background, body{  
background: rgb(174, 97, 94) }
```

If only the background color should be changed can be used:

```
.background{ background-color: rgb(174, 97,  
94) }
```

This example shows the color as background, it is applied via the CSS property "background".

To optimize and compress your CSS code, you can use our [online CSS compressor and optimizer](#) based on csstidy. If you want to create a linear or radial gradient as background or border, check our [CSS Gradient Generator](#).

Hey! You found this booklet interesting? Support Converting Colors with the new Membership Option!

The pro membership hides all ads, plus gives you double the colors in the color bucket, and more awesome pro features!

[Learn more, Memberships starting at \\$2.50/m!](#)

**Follow me
on Twitter!**

@ConvertingColor