

# Converting Colors

CIELCh(50, 72.665, 6.919)

Have a look what the booklet for  
CIELCh(50, 72.665, 6.919) contains.

<b>CIELCh(50, 72.616, 7.019)</b> .....	3
<i><b>Conversions</b></i> .....	4
<i><b>Details</b></i> .....	6
<i><b>Harmonies</b></i> .....	11
<i><b>Previews</b></i> .....	20
<i><b>Color Blindness Simulation</b></i> .....	23
<i><b>CSS Examples</b></i> .....	26

**Color**

**CIELCh(50, 72.616, 7.019)**

# Conversions

## Conversions Part 1

<b>Format</b>	<b>Color</b>
Hex	E1246B
RGB	225, 36, 107
RGB Percent	88%, 14%, 42%
CMY	0.1164, 0.8569, 0.5794
CMYK	0.00, 0.84, 0.52, 0.12
HSL	338°, 76%, 51%
HSV	338°, 84%, 88%
XYZ	34.4672, 18.4187, 15.7195
YIQ	100.6050, 89.8530, 62.1490

# Conversions

## Conversions Part 2

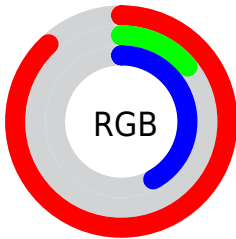
<b>Format</b>	<b>Color</b>
<b>R<sub>YB</sub></b>	225, 36, 107
Decimal	14754923
CIE <sub>Lab</sub>	50.00, 72.07, 8.87
CIE <sub>LCh</sub>	50, 72.616, 7.019
Yxy	18.4187, 0.5024, 0.2685
Android (android.graphics.Color)	4292945003 (0xFFE1246B)
YUV	100.6050, 3.1527, 109.0944
Hunter-Lab	42.9170, 68.2513, 8.3253

# Details

The CIELCh color **50, 72.616, 7.019** is a dark color, and the websafe version is hex **CC0066**. The color can be described as dark washed rose. A complement of this color would be **80, 64.326, 159.667**, and the grayscale version is **43, 0.006, 296.813**.

A 20% lighter version of the original color is **65, 62.185, 0.630**, and **34, 61.025, 14.183** is the 20% darker color. If you saturate the color by 10%, you get **48, 76.146, 11.659**, and if you desaturate by 10%, it is **52, 67.314, 3.314**.

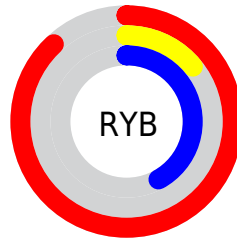
# Distribution



Red (88%)

Green (14%)

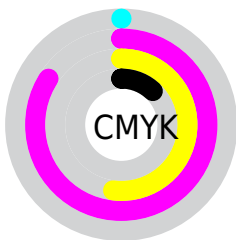
Blue (42%)



Red (88%)

Yellow (14%)

Blue (42%)

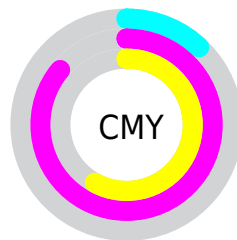


Cyan (0%)

Magenta (84%)

Yellow (52%)

Black (12%)



Cyan (12%)

Magenta (86%)

Yellow (58%)

# Brightness & Saturation Gradients

These gradients show how the CIELCh color 50, 72.616, 7.019 changes by changing the brightness by 10 percent. The first figure shows a shift by +10% for each color and the second figure -10%.

Similar to the brightness gradients but the following saturation gradients show a change of the CIELCh color 50, 72.616, 7.019 by changing the saturation by 10% instead.



 50, 72.616, 7.019       50, 72.616, 7.019

 100, 72.616, 7.019       40, 72.616, 7.019

 70, 72.616, 7.019       30, 72.616, 7.019

 80, 72.616, 7.019       20, 72.616, 7.019

 90, 72.616, 7.019       10, 72.616, 7.019

 0, 72.616, 7.019

 50, 72.616, 7.019       50, 72.616, 7.019

 48, 76.146, 11.659       52, 67.314, 3.314

 48, 77.836, 14.885       56, 60.269, 0.397

 60, 51.838,

358.088

65, 42.505,  
356.228

70, 32.716,  
354.694

76, 22.818,  
353.398

81, 13.044,  
352.272

87, 3.535, 351.198

93, 5.636, 170.562

# Harmonies

# Complementary

The Complementary color scheme is a pair of colors which are on the opposite of each other on the color wheel.



50, 72.616, 7.019



80, 64.326, 159.667

# Rectangle

The Rectangle color scheme consists of four colors that form a rectangle on the color wheel.



50, 72.616, 7.019



50, 72.616, 57.019



50, 72.616, 187.019



50, 72.616, 237.019

# Sweetspot

The Sweet Spot groups the original color and five complimentary colors.



50, 72.612, 7.021



84, 26.540, 353.564



44, 103.153, 315.641



42, 18.175, 354.009



0, 0.000, 0.000



53, 0.007, 296.813



# Same Dimension

The Same Dimension uses a secret algorithm to generate beautiful new colors.



50, 72.612, 7.021



54, 85.572, 15.301



51, 80.693, 39.024



44, 5.310, 351.815



37, 64.522, 13.901



6, 25.573, 3.354





# Inverse Universe

The Inverse Universe completely reimagines the original color for something new.



50, 72.612, 7.021



54, 85.572, 15.301



75, 39.235, 214.740



44, 5.310, 351.815



37, 64.522, 13.901



6, 25.573, 3.354



# Previews

## White Background



This preview shows how the CIELCh color 50, 72.616, 7.019 looks on a white background.

## Color Contrast Check

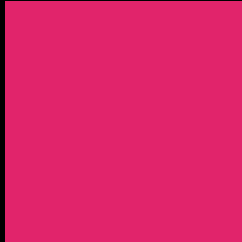
Large Text (above 18pt) WCAG AA ✓ Pass

Any Text WCAG AA ✓ Pass

Large Text (above 18pt) WCAG AAA ✓ Pass

Any Text WCAG AAA × Fail

# Black Background



This preview shows how the CIELCh color 50, 72.616, 7.019 looks on a black background.

## Color Contrast Check

Large Text (above 18pt) WCAG AA ✓ Pass

Any Text WCAG AA ✓ Pass

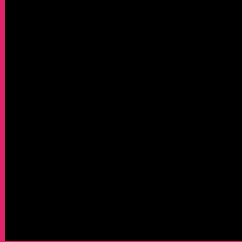
Large Text (above 18pt) WCAG AAA ✓ Pass

Any Text WCAG AAA × Fail

If you want to check with other color combinations, try the [Color Contrast Checker](#).

**CIELCh 50, 72.616, 7.019**

## **Background**



This preview shows how black text looks on a background with the CIELCh color 50, 72.616, 7.019.



This preview shows how white text looks on a background with the CIELCh color 50, 72.616, 7.019.

# Color Blindness Simulation

Color vision deficiency is a very complex topic, and I could not describe the different causes any better than Wikipedia does, so if you want to learn more, you should check out their [article about color blindness](#).

## Dichromacy



### Original Color

50, 72.616, 7.019

### Protanopia

50, 17.638, 284.282

### Deuteranopia

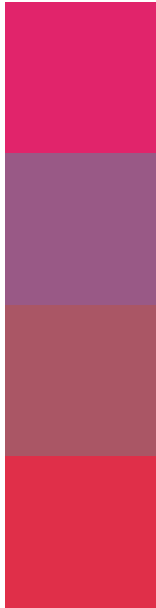
50, 14.552, 62.643



**Tritanopia**  
50, 76.064, 32.336



# Trichromacy



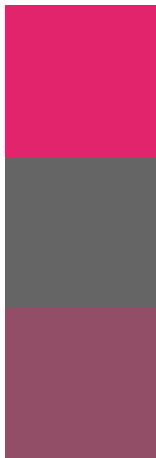
**Original Color**  
50, 72.616, 7.019

**Protanomaly**  
46, 35.737, 337.221

**Deuteranomaly**  
47, 36.678, 11.547

**Tritanomaly**  
50, 73.300, 23.753

# Monochromacy



**Original Color**  
50, 72.616, 7.019

**Achromatopsia**  
43, 0.006, 296.813

**Achromatomaly**  
42, 31.645, 356.944

# CSS Examples

## Text

The CSS property to change the color of the text to CIELCh 50, 72.616, 7.019 is called "color". The color property can be set on classes, ids or directly on the HTML element.

This example shows how text in the color `rgb(225, 36, 107)` looks like.

```
.text, #text, p{  
    color:rgb(225, 36, 107)  
}
```

If you want to add a text shadow in that color use the text-shadow property, you can generate a text shadow directly with our [CSS Text Shadow Generator](#).

Here you see how black text with a 4 pixel rgb(225, 36, 107) colored shadow looks like.

```
.shadow{ text-shadow: 4px 4px 2px rgb(225, 36, 107) }
```

## Border

The CSS property to change the border of an element to CIELCh 50, 72.616, 7.019 is called "border". The border property can be set on classes, ids or directly on the HTML element.

This example shows the color as border, it can be applied via the CSS property "border" or "border-color".

```
.border, #border, table{ border:4px solid rgb(225, 36, 107) }
```

If only the border color should be changed use the property border-color.

```
.border{ border-color:rgb(225, 36, 107) }
```

If you want to add a box shadow in that color use:

Here you see how a box with a 4 pixel rgb(225, 36, 107) colored shadow looks like.

```
.boxshadow{ -moz-box-shadow:4px 4px 4px  
4px rgb(225, 36, 107); -webkit-box-  
shadow:4px 4px 4px 4px rgb(225, 36, 107);  
box-shadow:4px 4px 4px 4px rgb(225, 36,  
107) }
```

# Background

The CSS property to change the background color of an element to CIELCh 50, 72.616, 7.019 is called "background". The background property can be set on classes, ids or directly on the HTML element.

```
.background, #background, body{  
background: rgb(225, 36, 107) }
```

If only the background color should be changed can be used:

```
.background{ background-color: rgb(225, 36,  
107) }
```

This example shows the color as background, it is applied via the CSS property "background".

To optimize and compress your CSS code, you can use our [online CSS compressor and optimizer](#) based on csstidy. If you want to create a linear or radial gradient as background or border, check our [CSS Gradient Generator](#).

Hey! You found this booklet interesting? Support Converting Colors with the new Membership Option!

The pro membership hides all ads, plus gives you double the colors in the color bucket, and more awesome pro features!

**[Learn more, Memberships starting at \\$2.50/m!](#)**

**Follow me  
on Twitter!**

@ConvertingColor