

Converting Colors

CIELCh(51, 19.061, 68.901)

Have a look what the booklet for
CIELCh(51, 19.061, 68.901) contains.

CIELCh(51, 19.032, 69.054)	3
<i>Conversions</i>	4
<i>Details</i>	6
<i>Harmonies</i>	11
<i>Previews</i>	20
<i>Color Blindness Simulation</i>	23
<i>CSS Examples</i>	26

Color

CIELCh(51, 19.032, 69.054)

Conversions

Conversions Part 1

Format	Color
Hex	90755C
RGB	144, 117, 92
RGB Percent	56%, 46%, 36%
CMY	0.4372, 0.5429, 0.6409
CMYK	0.00, 0.19, 0.36, 0.44
HSL	29°, 22%, 46%
HSV	29°, 36%, 56%
XYZ	19.6394, 19.2686, 12.7094
YIQ	122.2230, 24.1170, -2.0510

Conversions

Conversions Part 2

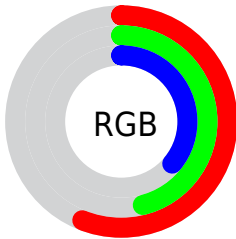
Format	Color
RYB	144, 140, 92
Decimal	9467228
CIELab	51.00, 6.80, 17.77
CIELCh	51, 19.032, 69.054
Yxy	19.2686, 0.3805, 0.3733
Android (android.graphics.Color)	4287657308 (0xFF90755C)
YUV	122.2230, -14.8999, 19.0984
Hunter-Lab	43.8960, 3.0440, 13.5607

Details

The CIELCh color **51, 19.032, 69.054** is a dark color, and the websafe version is hex **996666**. A complement of this color would be **49, 17.031, 259.047**, and the grayscale version is **51, 0.007, 296.813**.

A 20% lighter version of the original color is **71, 19.269, 69.095**, and **31, 18.857, 69.633** is the 20% darker color. If you saturate the color by 10%, you get **49, 24.890, 67.877**, and if you desaturate by 10%, it is **53, 13.437, 70.240**.

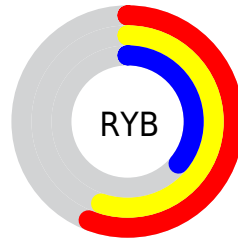
Distribution



Red (56%)

Green (46%)

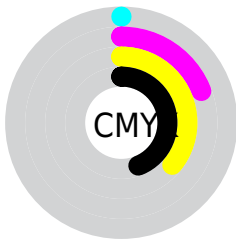
Blue (36%)



Red (56%)

Yellow (55%)

Blue (36%)

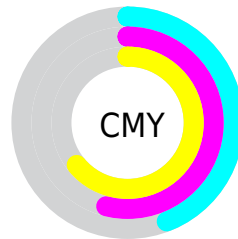


Cyan (0%)

Magenta (19%)

Yellow (36%)

Black (44%)



Cyan (44%)

Magenta (54%)

Yellow (64%)

Brightness & Saturation Gradients

These gradients show how the CIELCh color 51, 19.032, 69.054 changes by changing the brightness by 10 percent. The first figure shows a shift by +10% for each color and the second figure -10%.

Similar to the brightness gradients but the following saturation gradients show a change of the CIELCh color 51, 19.032, 69.054 by changing the saturation by 10% instead.

■ 51, 19.032, 69.054

■ 51, 19.032, 69.054

■ 100, 19.032,
69.054

■ 41, 19.032, 69.054

■ 71, 19.032, 69.054

■ 31, 19.032, 69.054

■ 81, 19.032, 69.054

■ 21, 19.032, 69.054

■ 91, 19.032, 69.054

■ 11, 19.032, 69.054

■ 1, 19.032, 69.054

■ 0, 19.032, 69.054

■ 51, 19.032, 69.054

■ 51, 19.032, 69.054

■ 49, 24.890, 67.877

■ 53, 13.437, 70.240

■ 47, 30.981, 66.684

■ 56, 8.107, 71.405

■ 44, 37.216, 65.457

■ 58, 3.027, 72.512

■ 42, 43.394, 64.124

■ 61, 1.822, 253.924

■ 41, 49.113, 62.532

■ 63, 6.463, 254.928

■ 39, 53.856, 60.493

■ 65, 10.919,
256.000

■ 38, 55.762, 59.877

■ 68, 15.210,
257.046

■ 71, 19.355,
258.056

■ 73, 23.371,
259.026

Harmonies

Complementary

The Complementary color scheme is a pair of colors which are on the opposite of each other on the color wheel.



51, 19.032, 69.054



49, 17.031, 259.047

Rectangle

The Rectangle color scheme consists of four colors that form a rectangle on the color wheel.



51, 19.032, 69.054



51, 19.032, 119.054



51, 19.032, 249.054



51, 19.032, 299.054

Sweetspot

The Sweet Spot groups the original color and five complimentary colors.



51, 19.032, 69.061



72, 6.723, 71.971



45, 26.430, 345.143



38, 4.566, 71.837



88, 0.010, 296.813



40, 0.006, 296.813

Same Dimension

The Same Dimension uses a secret algorithm to generate beautiful new colors.



51, 19.032, 69.061



63, 28.482, 68.150



58, 28.026, 105.318



29, 2.766, 72.199



36, 53.316, 60.103



1, 1.835, 73.319

Inverse Universe

The Inverse Universe completely reimagines the original color for something new.



49, 17.031, 259.047



60, 24.816, 260.787



41, 30.433, 293.443



29, 2.702, 254.524



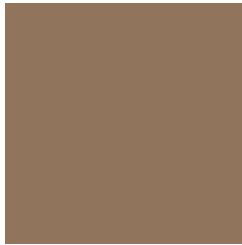
30, 42.302, 280.829



1, 1.836, 253.333

Previews

White Background



This preview shows how the CIELCh color 51, 19.032, 69.054 looks on a white background.

Color Contrast Check

Large Text (above 18pt) WCAG AA ✓ Pass

Any Text WCAG AA × Fail

Large Text (above 18pt) WCAG AAA × Fail

Any Text WCAG AAA × Fail

Black Background



This preview shows how the CIE LCh color 51, 19.032, 69.054 looks on a black background.

Color Contrast Check

Large Text (above 18pt) WCAG AA ✓ Pass

Any Text WCAG AA ✓ Pass

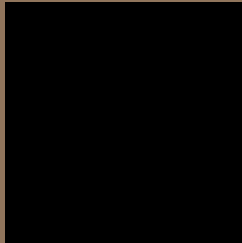
Large Text (above 18pt) WCAG AAA ✓ Pass

Any Text WCAG AAA × Fail

If you want to check with other color combinations, try the [Color Contrast Checker](#).

CIELCh 51, 19.032, 69.054

Background



This preview shows how black text looks on a background with the CIELCh color 51, 19.032, 69.054.



This preview shows how white text looks on a background with the CIELCh color 51, 19.032, 69.054.

Color Blindness Simulation

Color vision deficiency is a very complex topic, and I could not describe the different causes any better than Wikipedia does, so if you want to learn more, you should check out their [article about color blindness](#).

Dichromacy



Original Color

51, 19.032, 69.054

Protanopia

51, 16.121, 93.997

Deuteranopia

51, 18.736, 70.093



Tritanopia
51, 14.728, 2.944

Trichromacy



Original Color
51, 19.032, 69.054

Protanomaly
51, 16.706, 83.200

Deuteranomaly
51, 18.736, 70.093

Tritanomaly
51, 13.864, 30.466

Monochromacy



Original Color
51, 19.032, 69.054

Achromatopsia
51, 0.007, 296.813

Achromatomaly
51, 6.690, 70.809

CSS Examples

Text

The CSS property to change the color of the text to CIELCh 51, 19.032, 69.054 is called "color". The color property can be set on classes, ids or directly on the HTML element.

This example shows how text in the color `rgb(144, 117, 92)` looks like.

```
.text, #text, p{  
    color:rgb(144, 117, 92)  
}
```

If you want to add a text shadow in that color use the text-shadow property, you can generate a text shadow directly with our [CSS Text Shadow Generator](#).

Here you see how black text with a 4 pixel rgb(144, 117, 92) colored shadow looks like.

```
.shadow{ text-shadow: 4px 4px 2px rgb(144, 117, 92) }
```

Border

The CSS property to change the border of an element to CIELCh 51, 19.032, 69.054 is called "border". The border property can be set on classes, ids or directly on the HTML element.

This example shows the color as border, it can be applied via the CSS property "border" or "border-color".

```
.border, #border, table{ border:4px solid rgb(144, 117, 92) }
```

If only the border color should be changed use the property `border-color`.

```
.border{ border-color:rgb(144, 117, 92) }
```

If you want to add a box shadow in that color use:

Here you see how a box with a 4 pixel `rgb(144, 117, 92)` colored shadow looks like.

```
.boxshadow{ -moz-box-shadow:4px 4px 4px  
4px rgb(144, 117, 92); -webkit-box-  
shadow:4px 4px 4px 4px rgb(144, 117, 92);  
box-shadow:4px 4px 4px 4px rgb(144, 117,  
92) }
```

Background

The CSS property to change the background color of an element to CIELCh 51, 19.032, 69.054 is called "background". The background property can be set on classes, ids or directly on the HTML element.

```
.background, #background, body{  
background: rgb(144, 117, 92) }
```

If only the background color should be changed can be used:

```
.background{ background-color: rgb(144,  
117, 92) }
```

This example shows the color as background, it is applied via the CSS property "background".

To optimize and compress your CSS code, you can use our [online CSS compressor and optimizer](#) based on csstidy. If you want to create a linear or radial gradient as background or border, check our [CSS Gradient Generator](#).

Hey! You found this booklet interesting? Support Converting Colors with the new Membership Option!

The pro membership hides all ads, plus gives you double the colors in the color bucket, and more awesome pro features!

[Learn more, Memberships starting at \\$2.50/m!](#)

**Follow me
on Twitter!**

@ConvertingColor