

Converting Colors

CIELCh(51, 23.657, 53.316)

Have a look what the booklet for
CIELCh(51, 23.657, 53.316) contains.

CIELCh(51, 23.607, 53.330)	3
<i>Conversions</i>	4
<i>Details</i>	6
<i>Harmonies</i>	11
<i>Previews</i>	20
<i>Color Blindness Simulation</i>	23
<i>CSS Examples</i>	26

Color

CIELCh(51, 23.607, 53.330)

Conversions

Conversions Part 1

Format	Color
Hex	9B705A
RGB	155, 112, 90
RGB Percent	61%, 44%, 35%
CMY	0.3925, 0.5611, 0.6473
CMYK	0.00, 0.28, 0.42, 0.39
HSL	20°, 27%, 48%
HSV	20°, 42%, 61%
XYZ	21.1295, 19.2686, 12.2621
YIQ	122.3490, 32.6900, 2.2740

Conversions

Conversions Part 2

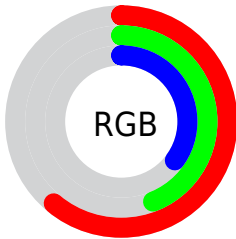
Format	Color
R_{YB}	155, 123, 90
Decimal	10186842
CIE Lab	51.00, 14.10, 18.93
CIE LCh	51, 23.607, 53.330
Yxy	19.2686, 0.4012, 0.3659
Android (android.graphics.Color)	4288376922 (0xFF9B705A)
YUV	122.3490, -15.9481, 28.6349
Hunter-Lab	43.8960, 9.1035, 14.1650

Details

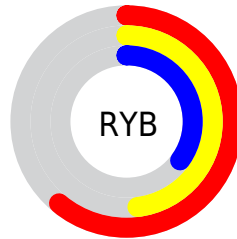
The CIELCh color **51, 23.607, 53.330** is a dark color, and the websafe version is hex **996666**. A complement of this color would be **53, 18.623, 241.804**, and the grayscale version is **51, 0.007, 296.813**.

A 20% lighter version of the original color is **71, 23.699, 53.736**, and **31, 23.710, 53.298** is the 20% darker color. If you saturate the color by 10%, you get **48, 30.295, 52.806**, and if you desaturate by 10%, it is **54, 17.340, 53.947**.

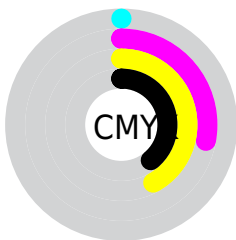
Distribution



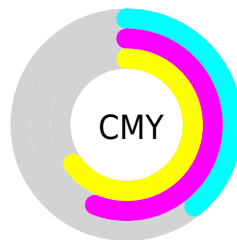
- Red (61%)
- Green (44%)
- Blue (35%)



- Red (61%)
- Yellow (48%)
- Blue (35%)



- Cyan (0%)
- Magenta (28%)
- Yellow (42%)
- Black (39%)



- Cyan (39%)
- Magenta (56%)
- Yellow (65%)

Brightness & Saturation Gradients

These gradients show how the CIELCh color 51, 23.607, 53.330 changes by changing the brightness by 10 percent. The first figure shows a shift by +10% for each color and the second figure -10%.

Similar to the brightness gradients but the following saturation gradients show a change of the CIELCh color 51, 23.607, 53.330 by changing the saturation by 10% instead.

■ 51, 23.607, 53.330

■ 51, 23.607, 53.330

■ 100, 23.607,
53.330

■ 41, 23.607, 53.330

■ 71, 23.607, 53.330

■ 31, 23.607, 53.330

■ 81, 23.607, 53.330

■ 21, 23.607, 53.330

■ 91, 23.607, 53.330

■ 11, 23.607, 53.330

■ 1, 23.607, 53.330

■ 0, 23.607, 53.330

■ 51, 23.607, 53.330

■ 51, 23.607, 53.330

■ 48, 30.295, 52.806

■ 54, 17.340, 53.947

■ 45, 37.368, 52.355

■ 57, 11.493, 54.624

43, 44.700, 51.945

60, 6.041, 55.338

40, 51.993, 51.453

63, 0.950, 55.766

38, 58.613, 50.588

67, 3.815, 237.101

37, 63.499, 49.906

70, 8.292, 237.863

73, 12.514,
238.665

76, 16.512,
239.469

80, 20.313,
240.262

Harmonies

Complementary

The Complementary color scheme is a pair of colors which are on the opposite of each other on the color wheel.



51, 23.607, 53.330



53, 18.623, 241.804

Rectangle

The Rectangle color scheme consists of four colors that form a rectangle on the color wheel.



51, 23.607, 53.330



51, 23.607, 103.330



51, 23.607, 233.330



51, 23.607, 283.330

Sweetspot

The Sweet Spot groups the original color and five complimentary colors.



51, 23.606, 53.336



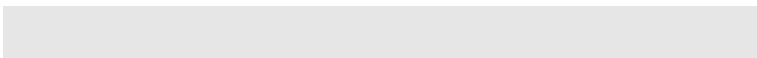
76, 8.176, 55.245



47, 35.339, 338.907



40, 5.809, 55.096



91, 0.011, 296.813



43, 0.006, 296.813

Same Dimension

The Same Dimension uses a secret algorithm to generate beautiful new colors.



51, 23.606, 53.336



62, 35.992, 52.854



60, 30.469, 97.642



31, 2.801, 55.529



33, 58.816, 50.187



2, 2.944, 55.631

Inverse Universe

The Inverse Universe completely reimagines the original color for something new.



53, 18.623, 241.804



66, 26.715, 243.759



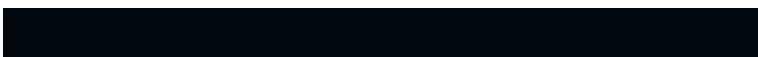
44, 32.500, 288.549



31, 2.682, 237.245



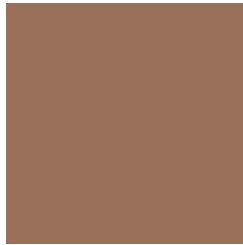
37, 33.076, 261.690



2, 2.949, 237.728

Previews

White Background



This preview shows how the CIELCh color 51, 23.607, 53.330 looks on a white background.

Color Contrast Check

Large Text (above 18pt) WCAG AA ✓ Pass

Any Text WCAG AA × Fail

Large Text (above 18pt) WCAG AAA × Fail

Any Text WCAG AAA × Fail

Black Background



This preview shows how the CIELCh color 51, 23.607, 53.330 looks on a black background.

Color Contrast Check

Large Text (above 18pt) WCAG AA ✓ Pass

Any Text WCAG AA ✓ Pass

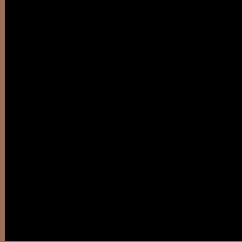
Large Text (above 18pt) WCAG AAA ✓ Pass

Any Text WCAG AAA × Fail

If you want to check with other color combinations, try the [Color Contrast Checker](#).

CIELCh 51, 23.607, 53.330

Background



This preview shows how black text looks on a background with the CIELCh color 51, 23.607, 53.330.



This preview shows how white text looks on a background with the CIELCh color 51, 23.607, 53.330.

Color Blindness Simulation

Color vision deficiency is a very complex topic, and I could not describe the different causes any better than Wikipedia does, so if you want to learn more, you should check out their [article about color blindness](#).

Dichromacy



Original Color

51, 23.607, 53.330

Protanopia

51, 16.554, 95.874

Deuteranopia

51, 20.460, 71.724



Tritanopia
51, 21.066, 7.906

Trichromacy



Original Color
51, 23.607, 53.330

Protanomaly
51, 17.341, 75.836

Deuteranomaly
51, 21.463, 64.390

Tritanomaly
51, 20.348, 25.048

Monochromacy



Original Color
51, 23.607, 53.330

Achromatopsia
51, 0.007, 296.813

Achromatomaly
51, 8.206, 54.319

CSS Examples

Text

The CSS property to change the color of the text to CIELCh 51, 23.607, 53.330 is called "color". The color property can be set on classes, ids or directly on the HTML element.

This example shows how text in the color `rgb(155, 112, 90)` looks like.

```
.text, #text, p{  
    color:rgb(155, 112, 90)  
}
```

If you want to add a text shadow in that color use the text-shadow property, you can generate a text shadow directly with our [CSS Text Shadow Generator](#).

Here you see how black text with a 4 pixel rgb(155, 112, 90) colored shadow looks like.

```
.shadow{ text-shadow: 4px 4px 2px rgb(155, 112, 90) }
```

Border

The CSS property to change the border of an element to CIELCh 51, 23.607, 53.330 is called "border". The border property can be set on classes, ids or directly on the HTML element.

This example shows the color as border, it can be applied via the CSS property "border" or "border-color".

```
.border, #border, table{ border:4px solid rgb(155, 112, 90) }
```

If only the border color should be changed use the property `border-color`.

```
.border{ border-color:rgb(155, 112, 90) }
```

If you want to add a box shadow in that color use:

Here you see how a box with a 4 pixel `rgb(155, 112, 90)` colored shadow looks like.

```
.boxshadow{ -moz-box-shadow:4px 4px 4px  
4px rgb(155, 112, 90); -webkit-box-  
shadow:4px 4px 4px 4px rgb(155, 112, 90);  
box-shadow:4px 4px 4px 4px rgb(155, 112,  
90) }
```

Background

The CSS property to change the background color of an element to CIELCh 51, 23.607, 53.330 is called "background". The background property can be set on classes, ids or directly on the HTML element.

```
.background, #background, body{  
background: rgb(155, 112, 90) }
```

If only the background color should be changed can be used:

```
.background{ background-color: rgb(155,  
112, 90) }
```

This example shows the color as background, it is applied via the CSS property "background".

To optimize and compress your CSS code, you can use our [online CSS compressor and optimizer](#) based on csstidy. If you want to create a linear or radial gradient as background or border, check our [CSS Gradient Generator](#).

Hey! You found this booklet interesting? Support Converting Colors with the new Membership Option!

The pro membership hides all ads, plus gives you double the colors in the color bucket, and more awesome pro features!

[Learn more, Memberships starting at \\$2.50/m!](#)

**Follow me
on Twitter!**

@ConvertingColor