

Converting Colors

CIELCh(51, 30.652, 64.094)

Have a look what the booklet for
CIELCh(51, 30.652, 64.094) contains.

CIELCh(51, 30.592, 64.128)	3
<i>Conversions</i>	4
<i>Details</i>	6
<i>Harmonies</i>	11
<i>Previews</i>	20
<i>Color Blindness Simulation</i>	23
<i>CSS Examples</i>	26

Color

CIELCh(51, 30.592, 64.128)

Conversions

Conversions Part 1

Format	Color
Hex	9D704B
RGB	157, 112, 75
RGB Percent	62%, 44%, 29%
CMY	0.3843, 0.5607, 0.7058
CMYK	0.00, 0.29, 0.52, 0.38
HSL	27°, 35%, 45%
HSV	27°, 52%, 62%
XYZ	20.9731, 19.2686, 9.2724
YIQ	121.2370, 38.6970, -1.9670

Conversions

Conversions Part 2

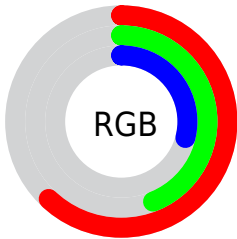
Format	Color
R_{YB}	157, 142, 75
Decimal	10317899
CIE Lab	51.00, 13.35, 27.53
CIE LCh	51, 30.592, 64.128
Yxy	19.2686, 0.4236, 0.3892
Android (android.graphics.Color)	4288507979 (0xFF9D704B)
YUV	121.2370, -22.7948, 31.3642
Hunter-Lab	43.8960, 8.4676, 18.2031

Details

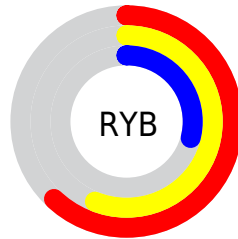
The CIELCh color **51, 30.592, 64.128** is a dark color, and the websafe version is hex **996633**. A complement of this color would be **49, 25.091, 259.493**, and the grayscale version is **51, 0.007, 296.813**.

A 20% lighter version of the original color is **71, 30.887, 64.431**, and **31, 30.453, 63.739** is the 20% darker color. If you saturate the color by 10%, you get **49, 37.349, 63.030**, and if you desaturate by 10%, it is **53, 24.081, 65.229**.

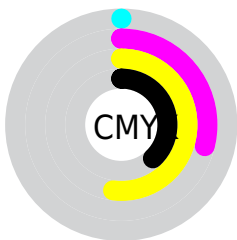
Distribution



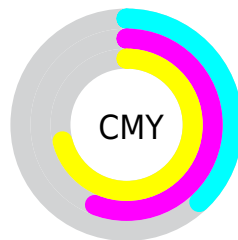
- Red (62%)
- Green (44%)
- Blue (29%)



- Red (62%)
- Yellow (56%)
- Blue (29%)



- Cyan (0%)
- Magenta (29%)
- Yellow (52%)
- Black (38%)



- Cyan (38%)
- Magenta (56%)
- Yellow (71%)

Brightness & Saturation Gradients

These gradients show how the CIELCh color 51, 30.592, 64.128 changes by changing the brightness by 10 percent. The first figure shows a shift by +10% for each color and the second figure -10%.

Similar to the brightness gradients but the following saturation gradients show a change of the CIELCh color 51, 30.592, 64.128 by changing the saturation by 10% instead.

■ 51, 30.592, 64.128

■ 51, 30.592, 64.128

■ 100, 30.592,
64.128

■ 41, 30.592, 64.128

■ 71, 30.592, 64.128

■ 31, 30.592, 64.128

■ 81, 30.592, 64.128

■ 21, 30.592, 64.128

■ 91, 30.592, 64.128

■ 11, 30.592, 64.128

■ 1, 30.592, 64.128

■ 0, 30.592, 64.128

■ 51, 30.592, 64.128

■ 51, 30.592, 64.128

■ 49, 37.349, 63.030

■ 53, 24.081, 65.229

■ 46, 44.196, 61.871

■ 56, 17.878, 66.334

■ 44, 50.793, 60.528

■ 59, 11.996, 67.446

■ 42, 56.503, 58.742

■ 61, 6.422, 68.545

■ 41, 60.460, 57.267

■ 64, 1.135, 69.418

■ 67, 3.893, 250.908

■ 70, 8.689, 251.942

■ 72, 13.280,
252.981

■ 75, 17.689,
253.995

Harmonies

Complementary

The Complementary color scheme is a pair of colors which are on the opposite of each other on the color wheel.



51, 30.592, 64.128



49, 25.091, 259.493

Rectangle

The Rectangle color scheme consists of four colors that form a rectangle on the color wheel.



51, 30.592, 64.128



51, 30.592, 114.128



51, 30.592, 244.128



51, 30.592, 294.128

Sweetspot

The Sweet Spot groups the original color and five complimentary colors.



51, 30.592, 64.133



77, 10.518, 68.100



44, 40.798, 346.183



40, 7.121, 67.892



91, 0.011, 296.813



43, 0.006, 296.813

Same Dimension

The Same Dimension uses a secret algorithm to generate beautiful new colors.



51, 30.592, 64.133



62, 47.006, 62.807



62, 42.078, 102.975



32, 2.963, 68.862



37, 56.288, 57.602



2, 3.755, 67.240

Inverse Universe

The Inverse Universe completely reimagines the original color for something new.



49, 25.091, 259.493



58, 36.738, 263.209



37, 47.936, 295.885



32, 2.881, 251.143



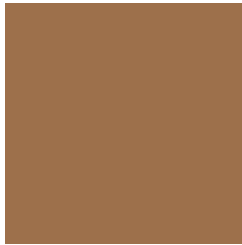
33, 41.691, 277.772



2, 3.868, 253.179

Previews

White Background



This preview shows how the CIELCh color 51, 30.592, 64.128 looks on a white background.

Color Contrast Check

Large Text (above 18pt) WCAG AA ✓ Pass

Any Text WCAG AA × Fail

Large Text (above 18pt) WCAG AAA × Fail

Any Text WCAG AAA × Fail

Black Background



This preview shows how the CIELCh color 51, 30.592, 64.128 looks on a black background.

Color Contrast Check

Large Text (above 18pt) WCAG AA ✓ Pass

Any Text WCAG AA ✓ Pass

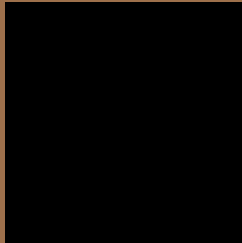
Large Text (above 18pt) WCAG AAA ✓ Pass

Any Text WCAG AAA × Fail

If you want to check with other color combinations, try the [Color Contrast Checker](#).

CIELCh 51, 30.592, 64.128

Background



This preview shows how black text looks on a background with the CIELCh color 51, 30.592, 64.128.



This preview shows how white text looks on a background with the CIELCh color 51, 30.592, 64.128.

Color Blindness Simulation

Color vision deficiency is a very complex topic, and I could not describe the different causes any better than Wikipedia does, so if you want to learn more, you should check out their [article about color blindness](#).

Dichromacy



Original Color

51, 30.592, 64.128

Protanopia

51, 25.098, 96.558

Deuteranopia

51, 28.769, 75.885



Tritanopia
51, 22.706, 10.686

Trichromacy



Original Color
51, 30.592, 64.128

Protanomaly
51, 25.544, 82.752

Deuteranomaly
51, 29.429, 72.378

Tritanomaly
51, 22.820, 34.905

Monochromacy



Original Color
51, 30.592, 64.128

Achromatopsia
51, 0.007, 296.813

Achromatomaly
51, 10.678, 69.156

CSS Examples

Text

The CSS property to change the color of the text to CIELCh 51, 30.592, 64.128 is called "color". The color property can be set on classes, ids or directly on the HTML element.

This example shows how text in the color `rgb(157, 112, 75)` looks like.

```
.text, #text, p{  
    color:rgb(157, 112, 75)  
}
```

If you want to add a text shadow in that color use the text-shadow property, you can generate a text shadow directly with our [CSS Text Shadow Generator](#).

Here you see how black text with a 4 pixel rgb(157, 112, 75) colored shadow looks like.

```
.shadow{ text-shadow: 4px 4px 2px rgb(157, 112, 75) }
```

Border

The CSS property to change the border of an element to CIELCh 51, 30.592, 64.128 is called "border". The border property can be set on classes, ids or directly on the HTML element.

This example shows the color as border, it can be applied via the CSS property "border" or "border-color".

```
.border, #border, table{ border:4px solid rgb(157, 112, 75) }
```

If only the border color should be changed use the property `border-color`.

```
.border{ border-color:rgb(157, 112, 75) }
```

If you want to add a box shadow in that color use:

Here you see how a box with a 4 pixel `rgb(157, 112, 75)` colored shadow looks like.

```
.boxshadow{ -moz-box-shadow:4px 4px 4px  
4px rgb(157, 112, 75); -webkit-box-  
shadow:4px 4px 4px 4px rgb(157, 112, 75);  
box-shadow:4px 4px 4px 4px rgb(157, 112,  
75) }
```

Background

The CSS property to change the background color of an element to CIELCh 51, 30.592, 64.128 is called "background". The background property can be set on classes, ids or directly on the HTML element.

```
.background, #background, body{  
background: rgb(157, 112, 75) }
```

If only the background color should be changed can be used:

```
.background{ background-color: rgb(157,  
112, 75) }
```

This example shows the color as background, it is applied via the CSS property "background".

To optimize and compress your CSS code, you can use our [online CSS compressor and optimizer](#) based on csstidy. If you want to create a linear or radial gradient as background or border, check our [CSS Gradient Generator](#).

Hey! You found this booklet interesting? Support Converting Colors with the new Membership Option!

The pro membership hides all ads, plus gives you double the colors in the color bucket, and more awesome pro features!

[Learn more, Memberships starting at \\$2.50/m!](#)

**Follow me
on Twitter!**

@ConvertingColor