

Converting Colors

CIELCh(51, 33.364, 28.637)

Have a look what the booklet for
CIELCh(51, 33.364, 28.637) contains.

CIELCh(51, 33.186, 28.414)	3
<i>Conversions</i>	4
<i>Details</i>	6
<i>Harmonies</i>	11
<i>Previews</i>	20
<i>Color Blindness Simulation</i>	23
<i>CSS Examples</i>	26

Color

CIELCh(51, 33.186, 28.414)

Conversions

Conversions Part 1

Format	Color
Hex	AF6560
RGB	175, 101, 96
RGB Percent	69%, 40%, 38%
CMY	0.3137, 0.6039, 0.6235
CMYK	0.00, 0.42, 0.45, 0.31
HSL	4°, 33%, 53%
HSV	4°, 45%, 69%
XYZ	24.4474, 19.2686, 13.4988
YIQ	122.5560, 45.7090, 14.1330

Conversions

Conversions Part 2

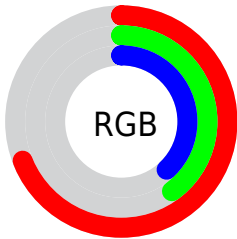
Format	Color
RYB	175, 101, 96
Decimal	11494752
CIELab	51.00, 29.19, 15.79
CIELCh	51, 33.186, 28.414
Yxy	19.2686, 0.4273, 0.3368
Android (android.graphics.Color)	4289684832 (0xFFAF6560)
YUV	122.5560, -13.0921, 45.9934
Hunter-Lab	43.8960, 22.5956, 12.4945

Details

The CIELCh color **51, 33.186, 28.414** is a dark color, and the websafe version is hex **996666**. A complement of this color would be **65, 23.780, 204.267**, and the grayscale version is **51, 0.007, 296.813**.

A 20% lighter version of the original color is **71, 33.131, 27.988**, and **31, 33.042, 28.008** is the 20% darker color. If you saturate the color by 10%, you get **47, 41.901, 29.987**, and if you desaturate by 10%, it is **55, 24.895, 27.225**.

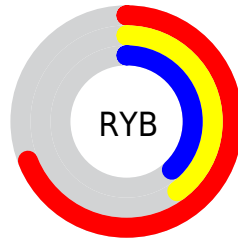
Distribution



Red (69%)

Green (40%)

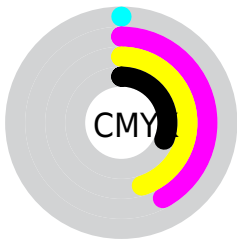
Blue (38%)



Red (69%)

Yellow (40%)

Blue (38%)

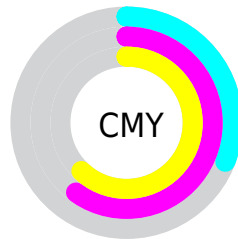


Cyan (0%)

Magenta (42%)

Yellow (45%)

Black (31%)



Cyan (31%)

Magenta (60%)

Yellow (62%)

Brightness & Saturation Gradients

These gradients show how the CIELCh color 51, 33.186, 28.414 changes by changing the brightness by 10 percent. The first figure shows a shift by +10% for each color and the second figure -10%.

Similar to the brightness gradients but the following saturation gradients show a change of the CIELCh color 51, 33.186, 28.414 by changing the saturation by 10% instead.

■ 51, 33.186, 28.414

■ 51, 33.186, 28.414

■ 100, 33.186,
28.414

■ 41, 33.186, 28.414

■ 71, 33.186, 28.414

■ 31, 33.186, 28.414

■ 81, 33.186, 28.414

■ 21, 33.186, 28.414

■ 91, 33.186, 28.414

■ 11, 33.186, 28.414

■ 1, 33.186, 28.414

■ 0, 33.186, 28.414

■ 51, 33.186, 28.414

■ 51, 33.186, 28.414

■ 47, 41.901, 29.987

■ 55, 24.895, 27.225

■ 44, 50.877, 31.998

■ 60, 17.126, 26.330

41, 59.828, 34.451

64, 9.908, 25.655

39, 68.250, 37.145

69, 3.231, 25.072

37, 75.070, 39.441

74, 2.935, 205.055

37, 77.920, 40.687

79, 8.637, 204.697

84, 13.922,
204.506

88, 18.840,
204.385

93, 23.435,
204.311

Harmonies

Complementary

The Complementary color scheme is a pair of colors which are on the opposite of each other on the color wheel.



51, 33.186, 28.414



65, 23.780, 204.267

Rectangle

The Rectangle color scheme consists of four colors that form a rectangle on the color wheel.



51, 33.186, 28.414



51, 33.186, 78.414



51, 33.186, 208.414



51, 33.186, 258.414

Sweetspot

The Sweet Spot groups the original color and five complimentary colors.



51, 33.184, 28.418



82, 11.276, 25.602



52, 50.562, 328.267



43, 7.915, 25.728



96, 0.011, 296.813



48, 0.006, 296.813

Same Dimension

The Same Dimension uses a secret algorithm to generate beautiful new colors.



51, 33.184, 28.418



61, 50.658, 29.950



60, 29.332, 74.786



34, 3.591, 25.323



31, 69.124, 40.413



2, 7.414, 23.939

Inverse Universe

The Inverse Universe completely reimagines the original color for something new.



65, 23.780, 204.267



81, 33.291, 204.384



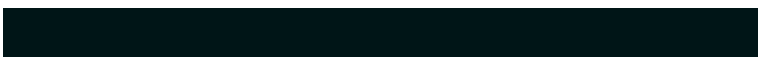
54, 26.869, 268.736



36, 3.385, 204.826



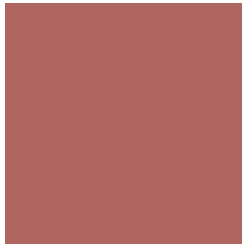
53, 31.189, 206.924



6, 7.148, 207.799

Previews

White Background



This preview shows how the CIELCh color 51, 33.186, 28.414 looks on a white background.

Color Contrast Check

Large Text (above 18pt) WCAG AA ✓ Pass

Any Text WCAG AA ✗ Fail

Large Text (above 18pt) WCAG AAA ✗ Fail

Any Text WCAG AAA ✗ Fail

Black Background



This preview shows how the CIE LCh color 51, 33.186, 28.414 looks on a black background.

Color Contrast Check

Large Text (above 18pt) WCAG AA ✓ Pass

Any Text WCAG AA ✓ Pass

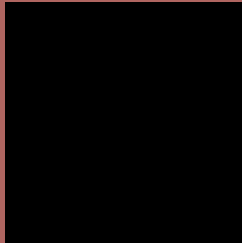
Large Text (above 18pt) WCAG AAA ✓ Pass

Any Text WCAG AAA × Fail

If you want to check with other color combinations, try the [Color Contrast Checker](#).

CIELCh 51, 33.186, 28.414

Background



This preview shows how black text looks on a background with the CIELCh color 51, 33.186, 28.414.

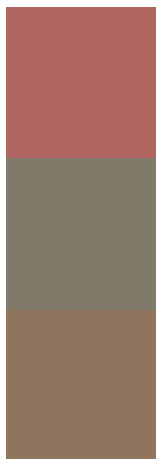


This preview shows how white text looks on a background with the CIELCh color 51, 33.186, 28.414.

Color Blindness Simulation

Color vision deficiency is a very complex topic, and I could not describe the different causes any better than Wikipedia does, so if you want to learn more, you should check out their [article about color blindness](#).

Dichromacy



Original Color

51, 33.186, 28.414

Protanopia

51, 9.605, 93.658

Deuteranopia

51, 18.265, 69.111



Tritanopia
51, 33.222, 16.103

Trichromacy



Original Color
51, 33.186, 28.414

Protanomaly
51, 15.315, 47.534

Deuteranomaly
51, 22.310, 47.202

Tritanomaly
51, 33.069, 20.841

Monochromacy



Original Color
51, 33.186, 28.414

Achromatopsia
52, 0.007, 296.813

Achromatomaly
51, 11.436, 26.452

CSS Examples

Text

The CSS property to change the color of the text to CIELCh 51, 33.186, 28.414 is called "color". The color property can be set on classes, ids or directly on the HTML element.

This example shows how text in the color `rgb(175, 101, 96)` looks like.

```
.text, #text, p{  
    color:rgb(175, 101, 96)  
}
```

If you want to add a text shadow in that color use the text-shadow property, you can generate a text shadow directly with our [CSS Text Shadow Generator](#).

Here you see how black text with a 4 pixel rgb(175, 101, 96) colored shadow looks like.

```
.shadow{ text-shadow: 4px 4px 2px rgb(175, 101, 96) }
```

Border

The CSS property to change the border of an element to CIELCh 51, 33.186, 28.414 is called "border". The border property can be set on classes, ids or directly on the HTML element.

This example shows the color as border, it can be applied via the CSS property "border" or "border-color".

```
.border, #border, table{ border:4px solid rgb(175, 101, 96) }
```

If only the border color should be changed use the property `border-color`.

```
.border{ border-color:rgb(175, 101, 96) }
```

If you want to add a box shadow in that color use:

Here you see how a box with a 4 pixel `rgb(175, 101, 96)` colored shadow looks like.

```
.boxshadow{ -moz-box-shadow:4px 4px 4px  
4px rgb(175, 101, 96); -webkit-box-  
shadow:4px 4px 4px 4px rgb(175, 101, 96);  
box-shadow:4px 4px 4px 4px rgb(175, 101,  
96) }
```

Background

The CSS property to change the background color of an element to CIELCh 51, 33.186, 28.414 is called "background". The background property can be set on classes, ids or directly on the HTML element.

```
.background, #background, body{  
background: rgb(175, 101, 96) }
```

If only the background color should be changed can be used:

```
.background{ background-color: rgb(175,  
101, 96) }
```

This example shows the color as background, it is applied via the CSS property "background".

To optimize and compress your CSS code, you can use our [online CSS compressor and optimizer](#) based on csstidy. If you want to create a linear or radial gradient as background or border, check our [CSS Gradient Generator](#).

Hey! You found this booklet interesting? Support Converting Colors with the new Membership Option!

The pro membership hides all ads, plus gives you double the colors in the color bucket, and more awesome pro features!

[Learn more, Memberships starting at \\$2.50/m!](#)

**Follow me
on Twitter!**

@ConvertingColor