

Converting Colors

CIELCh(51, 37.553, 30.934)

Have a look what the booklet for
CIELCh(51, 37.553, 30.934) contains.

CIELCh(51, 37.520, 30.953)	3
<i>Conversions</i>	4
<i>Details</i>	6
<i>Harmonies</i>	11
<i>Previews</i>	20
<i>Color Blindness Simulation</i>	23
<i>CSS Examples</i>	26

Color

CIELCh(51, 37.520, 30.953)

Conversions

Conversions Part 1

Format	Color
Hex	B4625A
RGB	180, 98, 90
RGB Percent	71%, 38%, 35%
CMY	0.2929, 0.6146, 0.6460
CMYK	0.00, 0.45, 0.50, 0.29
HSL	5°, 38%, 53%
HSV	5°, 50%, 71%
XYZ	25.1432, 19.2686, 12.1243
YIQ	121.6060, 51.4400, 14.8960

Conversions

Conversions Part 2

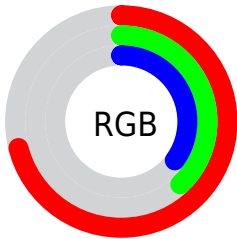
Format	Color
R_{YB}	180, 99, 90
Decimal	11821658
CIE Lab	51.00, 32.18, 19.30
CIE LCh	51, 37.520, 30.953
Yxy	19.2686, 0.4447, 0.3408
Android (android.graphics.Color)	4290011738 (0xFFB4625A)
YUV	121.6060, -15.5818, 51.2115
Hunter-Lab	43.8960, 25.4251, 14.3510

Details

The CIELCh color **51, 37.520, 30.953** is a dark color, and the websafe version is hex **CC6666**. A complement of this color would be **66, 25.655, 207.480**, and the grayscale version is **51, 0.007, 296.813**.

A 20% lighter version of the original color is **71, 37.678, 30.944**, and **31, 37.332, 31.370** is the 20% darker color. If you saturate the color by 10%, you get **47, 46.526, 32.526**, and if you desaturate by 10%, it is **55, 28.920, 29.762**.

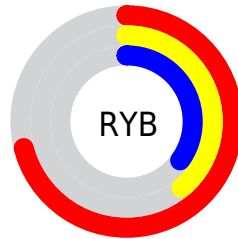
Distribution



Red (71%)

Green (38%)

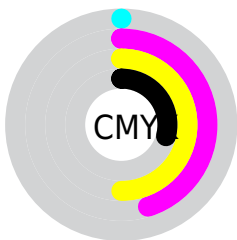
Blue (35%)



Red (71%)

Yellow (39%)

Blue (35%)

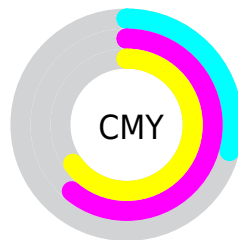


Cyan (0%)

Magenta (45%)

Yellow (50%)

Black (29%)



Cyan (29%)

Magenta (61%)

Yellow (65%)

Brightness & Saturation Gradients

These gradients show how the CIELCh color 51, 37.520, 30.953 changes by changing the brightness by 10 percent. The first figure shows a shift by +10% for each color and the second figure -10%.

Similar to the brightness gradients but the following saturation gradients show a change of the CIELCh color 51, 37.520, 30.953 by changing the saturation by 10% instead.

■ 51, 37.520, 30.953

■ 51, 37.520, 30.953

■ 100, 37.520,
30.953

■ 41, 37.520, 30.953

■ 71, 37.520, 30.953

■ 31, 37.520, 30.953

■ 81, 37.520, 30.953

■ 21, 37.520, 30.953

■ 91, 37.520, 30.953

■ 11, 37.520, 30.953

■ 1, 37.520, 30.953

■ 0, 37.520, 30.953

■ 51, 37.520, 30.953

■ 51, 37.520, 30.953

■ 47, 46.526, 32.526

■ 55, 28.920, 29.762

■ 44, 55.740, 34.504

■ 59, 20.843, 28.875

41, 64.791, 36.811

64, 13.329, 28.227

39, 72.926, 39.077

69, 6.379, 27.738

38, 79.261, 41.016

73, 0.037, 221.576

38, 79.298, 41.032

78, 5.960, 207.404

83, 11.443,
207.247

88, 16.534,
207.177

93, 21.280,
207.160

Harmonies

Complementary

The Complementary color scheme is a pair of colors which are on the opposite of each other on the color wheel.



51, 37.520, 30.953



66, 25.655, 207.480

Rectangle

The Rectangle color scheme consists of four colors that form a rectangle on the color wheel.



51, 37.520, 30.953



51, 37.520, 80.953



51, 37.520, 210.953



51, 37.520, 260.953

Sweetspot

The Sweet Spot groups the original color and five complimentary colors.



51, 37.518, 30.957



84, 12.182, 27.984



52, 55.520, 329.583



43, 8.375, 28.087



96, 0.011, 296.813



49, 0.007, 296.813

Same Dimension

The Same Dimension uses a secret algorithm to generate beautiful new colors.



51, 37.518, 30.957



61, 57.865, 32.720



62, 34.058, 77.256



35, 3.595, 27.709



32, 69.702, 40.881



2, 8.563, 25.541

Inverse Universe

The Inverse Universe completely reimagines the original color for something new.



66, 25.655, 207.480



82, 35.700, 207.956



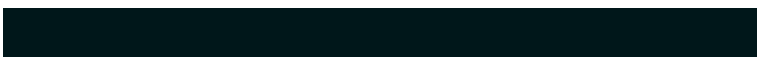
53, 31.813, 273.216



37, 3.387, 207.401



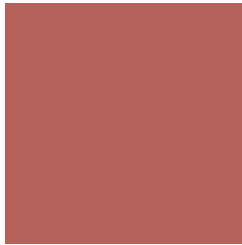
53, 30.790, 211.759



6, 8.093, 211.728

Previews

White Background



This preview shows how the CIELCh color 51, 37.520, 30.953 looks on a white background.

Color Contrast Check

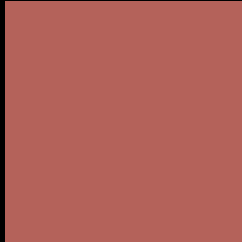
Large Text (above 18pt) WCAG AA ✓ Pass

Any Text WCAG AA × Fail

Large Text (above 18pt) WCAG AAA × Fail

Any Text WCAG AAA × Fail

Black Background



This preview shows how the CIE LCh color 51, 37.520, 30.953 looks on a black background.

Color Contrast Check

Large Text (above 18pt) WCAG AA ✓ Pass

Any Text WCAG AA ✓ Pass

Large Text (above 18pt) WCAG AAA ✓ Pass

Any Text WCAG AAA × Fail

If you want to check with other color combinations, try the [Color Contrast Checker](#).

CIELCh 51, 37.520, 30.953

Background



This preview shows how black text looks on a background with the CIELCh color 51, 37.520, 30.953.



This preview shows how white text looks on a background with the CIELCh color 51, 37.520, 30.953.

Color Blindness Simulation

Color vision deficiency is a very complex topic, and I could not describe the different causes any better than Wikipedia does, so if you want to learn more, you should check out their [article about color blindness](#).

Dichromacy



Original Color

51, 37.520, 30.953

Protanopia

51, 12.519, 94.717

Deuteranopia

51, 21.712, 72.318



Tritanopia
51, 36.853, 18.374

Trichromacy



Original Color
51, 37.520, 30.953

Protanomaly
51, 18.256, 51.095

Deuteranomaly
51, 25.706, 50.701

Tritanomaly
51, 36.963, 23.473

Monochromacy



Original Color
51, 37.520, 30.953

Achromatopsia
51, 0.007, 296.813

Achromatomaly
50, 12.887, 28.550

CSS Examples

Text

The CSS property to change the color of the text to CIELCh 51, 37.520, 30.953 is called "color". The color property can be set on classes, ids or directly on the HTML element.

This example shows how text in the color `rgb(180, 98, 90)` looks like.

```
.text, #text, p{  
    color:rgb(180, 98, 90)  
}
```

If you want to add a text shadow in that color use the text-shadow property, you can generate a text shadow directly with our [CSS Text Shadow Generator](#).

Here you see how black text with a 4 pixel rgb(180, 98, 90) colored shadow looks like.

```
.shadow{ text-shadow: 4px 4px 2px rgb(180, 98, 90) }
```

Border

The CSS property to change the border of an element to CIELCh 51, 37.520, 30.953 is called "border". The border property can be set on classes, ids or directly on the HTML element.

This example shows the color as border, it can be applied via the CSS property "border" or "border-color".

```
.border, #border, table{ border:4px solid rgb(180, 98, 90) }
```

If only the border color should be changed use the property `border-color`.

```
.border{ border-color:rgb(180, 98, 90) }
```

If you want to add a box shadow in that color use:

Here you see how a box with a 4 pixel `rgb(180, 98, 90)` colored shadow looks like.

```
.boxshadow{ -moz-box-shadow:4px 4px 4px  
4px rgb(180, 98, 90); -webkit-box-  
shadow:4px 4px 4px 4px rgb(180, 98, 90);  
box-shadow:4px 4px 4px 4px rgb(180, 98,  
90) }
```

Background

The CSS property to change the background color of an element to CIELCh 51, 37.520, 30.953 is called "background". The background property can be set on classes, ids or directly on the HTML element.

```
.background, #background, body{  
background: rgb(180, 98, 90) }
```

If only the background color should be changed can be used:

```
.background{ background-color: rgb(180, 98,  
90) }
```

This example shows the color as background, it is applied via the CSS property "background".

To optimize and compress your CSS code, you can use our [online CSS compressor and optimizer](#) based on csstidy. If you want to create a linear or radial gradient as background or border, check our [CSS Gradient Generator](#).

Hey! You found this booklet interesting? Support Converting Colors with the new Membership Option!

The pro membership hides all ads, plus gives you double the colors in the color bucket, and more awesome pro features!

[Learn more, Memberships starting at \\$2.50/m!](#)

**Follow me
on Twitter!**

@ConvertingColor