

Converting Colors

CIELCh(51, 39.342, 23.965)

Have a look what the booklet for
CIELCh(51, 39.342, 23.965) contains.

CIELCh(51, 39.277, 23.909)	3
<i>Conversions</i>	4
<i>Details</i>	6
<i>Harmonies</i>	11
<i>Previews</i>	20
<i>Color Blindness Simulation</i>	23
<i>CSS Examples</i>	26

Color

CIELCh(51, 39.277, 23.909)

Conversions

Conversions Part 1

Format	Color
Hex	B85F60
RGB	184, 95, 96
RGB Percent	72%, 37%, 38%
CMY	0.2778, 0.6269, 0.6230
CMYK	0.00, 0.48, 0.48, 0.28
HSL	359°, 39%, 55%
HSV	359°, 48%, 72%
XYZ	26.0300, 19.2686, 13.4472
YIQ	121.7250, 52.7230, 19.1790

Conversions

Conversions Part 2

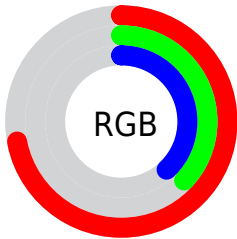
Format	Color
R_{YB}	184, 95, 96
Decimal	12083040
CIE _{Lab}	51.00, 35.91, 15.92
CIE _{LCh}	51, 39.277, 23.909
Yxy	19.2686, 0.4431, 0.3280
Android (android.graphics.Color)	4290273120 (0xFFB85F60)
YUV	121.7250, -12.6824, 54.6152
Hunter-Lab	43.8960, 29.0311, 12.5641

Details

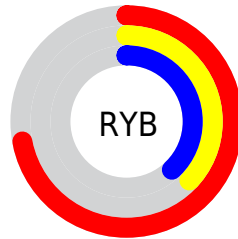
The CIELCh color **51, 39.277, 23.909** is a dark color, and the websafe version is hex **CC6666**. A complement of this color would be **70, 27.942, 196.099**, and the grayscale version is **51, 0.007, 296.813**.

A 20% lighter version of the original color is **71, 39.451, 24.044**, and **31, 39.194, 23.786** is the 20% darker color. If you saturate the color by 10%, you get **47, 48.577, 26.161**, and if you desaturate by 10%, it is **55, 30.208, 22.172**.

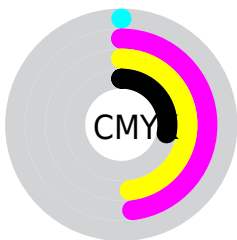
Distribution



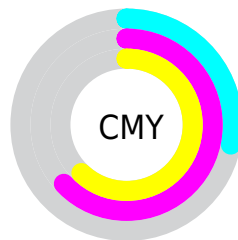
- Red (72%)
- Green (37%)
- Blue (38%)



- Red (72%)
- Yellow (37%)
- Blue (38%)



- Cyan (0%)
- Magenta (48%)
- Yellow (48%)
- Black (28%)



- Cyan (28%)
- Magenta (63%)
- Yellow (62%)

Brightness & Saturation Gradients

These gradients show how the CIELCh color 51, 39.277, 23.909 changes by changing the brightness by 10 percent. The first figure shows a shift by +10% for each color and the second figure -10%.

Similar to the brightness gradients but the following saturation gradients show a change of the CIELCh color 51, 39.277, 23.909 by changing the saturation by 10% instead.

■ 51, 39.277, 23.909

■ 51, 39.277, 23.909

■ 100, 39.277,
23.909

■ 41, 39.277, 23.909

■ 71, 39.277, 23.909

■ 31, 39.277, 23.909

■ 81, 39.277, 23.909

■ 21, 39.277, 23.909

■ 91, 39.277, 23.909

■ 11, 39.277, 23.909

■ 1, 39.277, 23.909

■ 0, 39.277, 23.909

■ 51, 39.277, 23.909

■ 51, 39.277, 23.909

■ 47, 48.577, 26.161

■ 55, 30.208, 22.172

■ 44, 57.840, 29.008

■ 60, 21.562, 20.830

41, 66.703, 32.429

65, 13.441, 19.785

39, 74.574, 36.080

70, 5.880, 18.934

38, 80.428, 39.063

76, 1.130, 198.849

38, 81.378, 39.540

81, 7.623, 197.956

86, 13.648,
197.522

92, 19.254,
197.180

96, 22.799,
198.012

Harmonies

Complementary

The Complementary color scheme is a pair of colors which are on the opposite of each other on the color wheel.



51, 39.277, 23.909



70, 27.942, 196.099

Rectangle

The Rectangle color scheme consists of four colors that form a rectangle on the color wheel.



51, 39.277, 23.909



51, 39.277, 73.909



51, 39.277, 203.909



51, 39.277, 253.909

Sweetspot

The Sweet Spot groups the original color and five complimentary colors.



51, 39.275, 23.912



85, 13.464, 19.508



54, 57.791, 326.447



44, 9.254, 19.694



97, 0.011, 296.813



50, 0.007, 296.813

Same Dimension

The Same Dimension uses a secret algorithm to generate beautiful new colors.



51, 39.275, 23.912



60, 59.910, 26.323



61, 32.169, 67.752



36, 4.003, 19.015



32, 71.446, 39.155



2, 10.640, 18.728

Inverse Universe

The Inverse Universe completely reimagines the original color for something new.



51, 39.275, 23.912



60, 59.910, 26.323



57, 27.569, 262.434



36, 4.003, 19.015



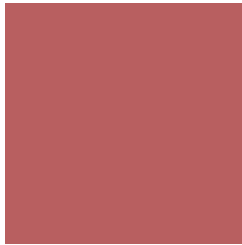
32, 71.446, 39.155



2, 10.640, 18.728

Previews

White Background



This preview shows how the CIELCh color 51, 39.277, 23.909 looks on a white background.

Color Contrast Check

Large Text (above 18pt) WCAG AA ✓ Pass

Any Text WCAG AA × Fail

Large Text (above 18pt) WCAG AAA × Fail

Any Text WCAG AAA × Fail

Black Background



This preview shows how the CIE LCh color 51, 39.277, 23.909 looks on a black background.

Color Contrast Check

Large Text (above 18pt) WCAG AA ✓ Pass

Any Text WCAG AA ✓ Pass

Large Text (above 18pt) WCAG AAA ✓ Pass

Any Text WCAG AAA × Fail

If you want to check with other color combinations, try the [Color Contrast Checker](#).

CIELCh 51, 39.277, 23.909

Background



This preview shows how black text looks on a background with the CIELCh color 51, 39.277, 23.909.



This preview shows how white text looks on a background with the CIELCh color 51, 39.277, 23.909.

Color Blindness Simulation

Color vision deficiency is a very complex topic, and I could not describe the different causes any better than Wikipedia does, so if you want to learn more, you should check out their [article about color blindness](#).

Dichromacy





Tritanopia
51, 39.529, 19.259

Trichromacy



Original Color
51, 39.277, 23.909

Protanomaly
51, 16.392, 37.392

Deuteranomaly
51, 24.329, 42.382

Tritanomaly
51, 39.722, 20.890

Monochromacy



Original Color
51, 39.277, 23.909

Achromatopsia
51, 0.007, 296.813

Achromatomaly
50, 13.916, 18.675

CSS Examples

Text

The CSS property to change the color of the text to CIELCh 51, 39.277, 23.909 is called "color". The color property can be set on classes, ids or directly on the HTML element.

This example shows how text in the color `rgb(184, 95, 96)` looks like.

```
.text, #text, p{  
    color:rgb(184, 95, 96)  
}
```

If you want to add a text shadow in that color use the text-shadow property, you can generate a text shadow directly with our [CSS Text Shadow Generator](#).

Here you see how black text with a 4 pixel rgb(184, 95, 96) colored shadow looks like.

```
.shadow{ text-shadow: 4px 4px 2px rgb(184, 95, 96) }
```

Border

The CSS property to change the border of an element to CIELCh 51, 39.277, 23.909 is called "border". The border property can be set on classes, ids or directly on the HTML element.

This example shows the color as border, it can be applied via the CSS property "border" or "border-color".

```
.border, #border, table{ border:4px solid rgb(184, 95, 96) }
```

If only the border color should be changed use the property border-color.

```
.border{ border-color:rgb(184, 95, 96) }
```

If you want to add a box shadow in that color use:

Here you see how a box with a 4 pixel rgb(184, 95, 96) colored shadow looks like.

```
.boxshadow{ -moz-box-shadow:4px 4px 4px  
4px rgb(184, 95, 96); -webkit-box-  
shadow:4px 4px 4px 4px rgb(184, 95, 96);  
box-shadow:4px 4px 4px 4px rgb(184, 95,  
96) }
```

Background

The CSS property to change the background color of an element to CIELCh 51, 39.277, 23.909 is called "background". The background property can be set on classes, ids or directly on the HTML element.

```
.background, #background, body{  
background: rgb(184, 95, 96) }
```

If only the background color should be changed can be used:

```
.background{ background-color: rgb(184, 95,  
96) }
```

This example shows the color as background, it is applied via the CSS property "background".

To optimize and compress your CSS code, you can use our [online CSS compressor and optimizer](#) based on csstidy. If you want to create a linear or radial gradient as background or border, check our [CSS Gradient Generator](#).

Hey! You found this booklet interesting? Support Converting Colors with the new Membership Option!

The pro membership hides all ads, plus gives you double the colors in the color bucket, and more awesome pro features!

[Learn more, Memberships starting at \\$2.50/m!](#)

**Follow me
on Twitter!**

@ConvertingColor