

Converting Colors

CIELCh(51, 63.021, 8.994)

Have a look what the booklet for
CIELCh(51, 63.021, 8.994) contains.

CIELCh(51, 62.817, 8.733)	3
<i>Conversions</i>	4
<i>Details</i>	6
<i>Harmonies</i>	11
<i>Previews</i>	20
<i>Color Blindness Simulation</i>	23
<i>CSS Examples</i>	26

Color

CIELCh(51, 62.817, 8.733)

Conversions

Conversions Part 1

Format	Color
Hex	D83F6C
RGB	216, 63, 108
RGB Percent	85%, 25%, 42%
CMY	0.1525, 0.7525, 0.5761
CMYK	0.00, 0.71, 0.50, 0.15
HSL	342°, 66%, 55%
HSV	342°, 71%, 85%
XYZ	32.8482, 19.2686, 16.2009
YIQ	113.8770, 76.7430, 46.4310

Conversions

Conversions Part 2

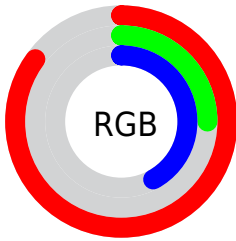
Format	Color
RYB	216, 63, 108
Decimal	14172012
CIELab	51.00, 62.09, 9.54
CIElCh	51, 62.817, 8.733
Yxy	19.2686, 0.4808, 0.2820
Android (android.graphics.Color)	4292362092 (0xFFD83F6C)
YUV	113.8770, -2.8974, 89.5619
Hunter-Lab	43.8960, 56.7566, 8.8448

Details

The CIELCh color **51, 62.817, 8.733** is a dark color, and the websafe version is hex **CC3366**. The color can be described as dark muted rose. A complement of this color would be **78, 51.273, 167.834**, and the grayscale version is **48, 0.006, 296.813**.

A 20% lighter version of the original color is **68, 54.783, 4.581**, and **32, 58.458, 11.509** is the 20% darker color. If you saturate the color by 10%, you get **48, 69.199, 12.569**, and if you desaturate by 10%, it is **55, 55.103, 5.707**.

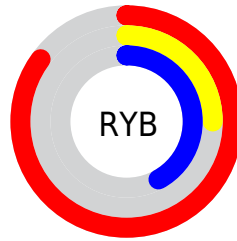
Distribution



Red (85%)

Green (25%)

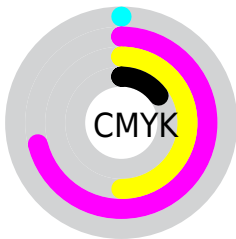
Blue (42%)



Red (85%)

Yellow (25%)

Blue (42%)

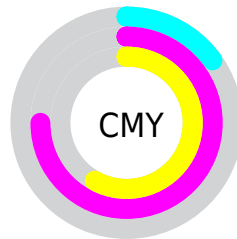


Cyan (0%)

Magenta (71%)

Yellow (50%)

Black (15%)



Cyan (15%)

Magenta (75%)

Yellow (58%)


Brightness & Saturation Gradients

These gradients show how the CIELCh color 51, 62.817, 8.733 changes by changing the brightness by 10 percent. The first figure shows a shift by +10% for each color and the second figure -10%.

Similar to the brightness gradients but the following saturation gradients show a change of the CIELCh color 51, 62.817, 8.733 by changing the saturation by 10% instead.

 51, 62.817, 8.733  51, 62.817, 8.733

 100, 62.817, 8.733  41, 62.817, 8.733

 71, 62.817, 8.733  31, 62.817, 8.733

 81, 62.817, 8.733  21, 62.817, 8.733

 91, 62.817, 8.733  11, 62.817, 8.733

 1, 62.817, 8.733

 0, 62.817, 8.733

 51, 62.817, 8.733  51, 62.817, 8.733

 48, 69.199, 12.569  55, 55.103, 5.707

 47, 74.160, 17.323  59, 46.422, 3.314

46, 77.906, 22.309

64, 37.194, 1.394

69, 27.786,
359.823

74, 18.465,
358.507

80, 9.399, 357.367

86, 0.679, 355.707

92, 7.655, 175.673

97, 14.248,
178.403

Harmonies

Complementary

The Complementary color scheme is a pair of colors which are on the opposite of each other on the color wheel.



51, 62.817, 8.733



78, 51.273, 167.834

Rectangle

The Rectangle color scheme consists of four colors that form a rectangle on the color wheel.



51, 62.817, 8.733



51, 62.817, 58.733



51, 62.817, 188.733



51, 62.817, 238.733

Sweetspot

The Sweet Spot groups the original color and five complimentary colors.



51, 62.814, 8.735



86, 21.345, 358.556



48, 88.403, 318.256



44, 14.517, 358.904



0, 0.000, 0.000



53, 0.007, 296.813

Same Dimension

The Same Dimension uses a secret algorithm to generate beautiful new colors.



51, 62.814, 8.735



56, 81.410, 14.832



55, 61.643, 41.463



42, 4.893, 357.218



36, 65.017, 21.295



5, 22.259, 6.540

Inverse Universe

The Inverse Universe completely reimagines the original color for something new.



51, 62.814, 8.735



56, 81.410, 14.832



70, 34.552, 226.687



42, 4.893, 357.218



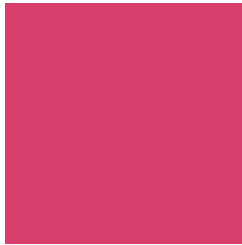
36, 65.017, 21.295



5, 22.259, 6.540

Previews

White Background



This preview shows how the CIELCh color 51, 62.817, 8.733 looks on a white background.

Color Contrast Check

Large Text (above 18pt) WCAG AA ✓ Pass

Any Text WCAG AA ✗ Fail

Large Text (above 18pt) WCAG AAA ✗ Fail

Any Text WCAG AAA ✗ Fail

Black Background



This preview shows how the CIELCh color 51, 62.817, 8.733 looks on a black background.

Color Contrast Check

Large Text (above 18pt) WCAG AA ✓ Pass

Any Text WCAG AA ✓ Pass

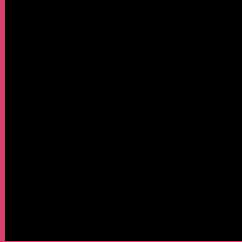
Large Text (above 18pt) WCAG AAA ✓ Pass

Any Text WCAG AAA × Fail

If you want to check with other color combinations, try the [Color Contrast Checker](#).

CIELCh 51, 62.817, 8.733

Background



This preview shows how black text looks on a background with the CIELCh color 51, 62.817, 8.733.

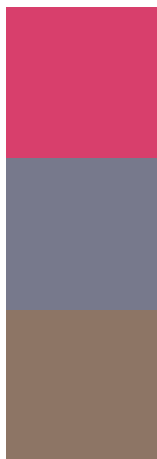


This preview shows how white text looks on a background with the CIELCh color 51, 62.817, 8.733.

Color Blindness Simulation

Color vision deficiency is a very complex topic, and I could not describe the different causes any better than Wikipedia does, so if you want to learn more, you should check out their [article about color blindness](#).

Dichromacy



Original Color

51, 62.817, 8.733

Protanopia

51, 11.084, 287.711

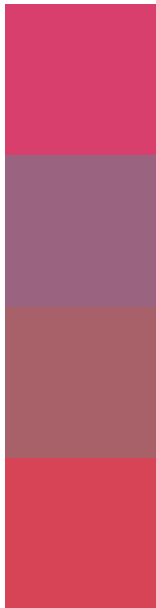
Deuteranopia

51, 14.078, 61.115



Tritanopia
51, 63.532, 28.079

Trichromacy



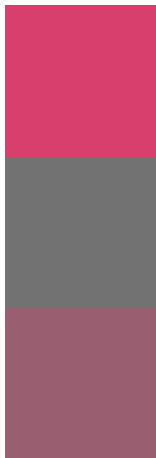
Original Color
51, 62.817, 8.733

Protanomaly
49, 26.880, 345.871

Deuteranomaly
49, 30.799, 16.204

Tritanomaly
51, 62.580, 21.343

Monochromacy



Original Color
51, 62.817, 8.733

Achromatopsia
48, 0.006, 296.813

Achromatomaly
47, 25.232, 359.937

CSS Examples

Text

The CSS property to change the color of the text to CIELCh 51, 62.817, 8.733 is called "color". The color property can be set on classes, ids or directly on the HTML element.

This example shows how text in the color `rgb(216, 63, 108)` looks like.

```
.text, #text, p{  
    color:rgb(216, 63, 108)  
}
```

If you want to add a text shadow in that color use the text-shadow property, you can generate a text shadow directly with our [CSS Text Shadow Generator](#).

Here you see how black text with a 4 pixel rgb(216, 63, 108) colored shadow looks like.

```
.shadow{ text-shadow: 4px 4px 2px rgb(216, 63, 108) }
```

Border

The CSS property to change the border of an element to CIELCh 51, 62.817, 8.733 is called "border". The border property can be set on classes, ids or directly on the HTML element.

This example shows the color as border, it can be applied via the CSS property "border" or "border-color".

```
.border, #border, table{ border:4px solid rgb(216, 63, 108) }
```

If only the border color should be changed use the property border-color.

```
.border{ border-color:rgb(216, 63, 108) }
```

If you want to add a box shadow in that color use:

Here you see how a box with a 4 pixel rgb(216, 63, 108) colored shadow looks like.

```
.boxshadow{ -moz-box-shadow:4px 4px 4px  
4px rgb(216, 63, 108); -webkit-box-  
shadow:4px 4px 4px 4px rgb(216, 63, 108);  
box-shadow:4px 4px 4px 4px rgb(216, 63,  
108) }
```

Background

The CSS property to change the background color of an element to CIELCh 51, 62.817, 8.733 is called "background". The background property can be set on classes, ids or directly on the HTML element.

```
.background, #background, body{  
background: rgb(216, 63, 108) }
```

If only the background color should be changed can be used:

```
.background{ background-color: rgb(216, 63,  
108) }
```

This example shows the color as background, it is applied via the CSS property "background".

To optimize and compress your CSS code, you can use our [online CSS compressor and optimizer](#) based on csstidy. If you want to create a linear or radial gradient as background or border, check our [CSS Gradient Generator](#).

Hey! You found this booklet interesting? Support Converting Colors with the new Membership Option!

The pro membership hides all ads, plus gives you double the colors in the color bucket, and more awesome pro features!

[Learn more, Memberships starting at \\$2.50/m!](#)

**Follow me
on Twitter!**

@ConvertingColor