

Converting Colors

CIELCh(51, 69.339, 16.242)

Have a look what the booklet for
CIELCh(51, 69.339, 16.242) contains.

CIELCh(51, 69.565, 16.373)	3
<i>Conversions</i>	4
<i>Details</i>	6
<i>Harmonies</i>	11
<i>Previews</i>	20
<i>Color Blindness Simulation</i>	23
<i>CSS Examples</i>	26

Color

CIELCh(51, 69.565, 16.373)

Conversions

Conversions Part 1

Format	Color
Hex	E1355C
RGB	225, 53, 92
RGB Percent	88%, 21%, 36%
CMY	0.1185, 0.7930, 0.6398
CMYK	0.00, 0.77, 0.59, 0.12
HSL	346°, 74%, 54%
HSV	346°, 77%, 88%
XYZ	34.1730, 19.2686, 12.0069
YIQ	108.8740, 89.9930, 48.5930

Conversions

Conversions Part 2

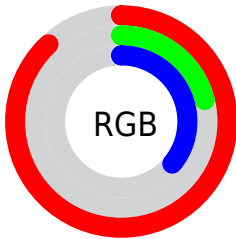
Format	Color
R_{YB}	225, 53, 92
Decimal	14759260
CIE Lab	51.00, 66.74, 19.61
CIE LCh	51, 69.565, 16.373
Yxy	19.2686, 0.5221, 0.2944
Android (android.graphics.Color)	4292949340 (0xFFE1355C)
YUV	108.8740, -8.3189, 101.8425
Hunter-Lab	43.8960, 62.1439, 14.5097

Details

The CIELCh color **51, 69.565, 16.373** is a dark color, and the websafe version is hex **FF3366**. The color can be described as dark washed red. A complement of this color would be **81, 51.899, 172.240**, and the grayscale version is **46, 0.006, 296.813**.

A 20% lighter version of the original color is **66, 57.307, 11.728**, and **34, 62.890, 21.563** is the 20% darker color. If you saturate the color by 10%, you get **49, 76.186, 20.947**, and if you desaturate by 10%, it is **54, 61.717, 12.678**.

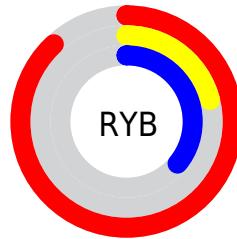
Distribution



Red (88%)

Green (21%)

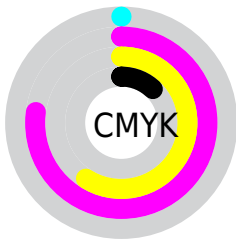
Blue (36%)



Red (88%)

Yellow (21%)

Blue (36%)

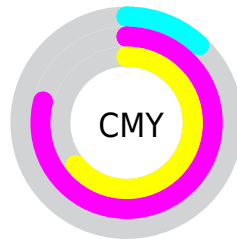


Cyan (0%)

Magenta (77%)

Yellow (59%)

Black (12%)



Cyan (12%)

Magenta (79%)

Yellow (64%)

Brightness & Saturation Gradients

These gradients show how the CIELCh color 51, 69.565, 16.373 changes by changing the brightness by 10 percent. The first figure shows a shift by +10% for each color and the second figure -10%.

Similar to the brightness gradients but the following saturation gradients show a change of the CIELCh color 51, 69.565, 16.373 by changing the saturation by 10% instead.

■ 51, 69.565, 16.373

■ 51, 69.565, 16.373

■ 100, 69.565,
16.373

■ 41, 69.565, 16.373

■ 71, 69.565, 16.373

■ 31, 69.565, 16.373

■ 81, 69.565, 16.373

■ 21, 69.565, 16.373

■ 91, 69.565, 16.373

■ 11, 69.565, 16.373

■ 1, 69.565, 16.373

■ 0, 69.565, 16.373

■ 51, 69.565, 16.373

■ 51, 69.565, 16.373

■ 49, 76.186, 20.947

■ 54, 61.717, 12.678

■ 48, 81.690, 26.284

■ 58, 52.864, 9.755

47, 83.548, 28.128

63, 43.384, 7.445

68, 33.664, 5.598

74, 24.012, 4.091

79, 14.630, 2.831

85, 5.635, 1.719

92, 2.923, 181.097

98, 10.991,
180.344

Harmonies

Complementary

The Complementary color scheme is a pair of colors which are on the opposite of each other on the color wheel.



51, 69.565, 16.373



81, 51.899, 172.240

Rectangle

The Rectangle color scheme consists of four colors that form a rectangle on the color wheel.



51, 69.565, 16.373



51, 69.565, 66.373



51, 69.565, 196.373



51, 69.565, 246.373

Sweetspot

The Sweet Spot groups the original color and five complimentary colors.



51, 69.562, 16.375



85, 22.905, 3.644



50, 96.246, 320.304



43, 15.975, 4.129



0, 0.000, 0.000



53, 0.007, 296.813

Same Dimension

The Same Dimension uses a secret algorithm to generate beautiful new colors.



51, 69.562, 16.375



54, 87.633, 24.149



57, 67.508, 46.352



44, 4.936, 2.040



37, 69.027, 27.131



6, 25.284, 11.297

Inverse Universe

The Inverse Universe completely reimagines the original color for something new.



51, 69.562, 16.375



54, 87.633, 24.149



68, 37.712, 240.192



44, 4.936, 2.040



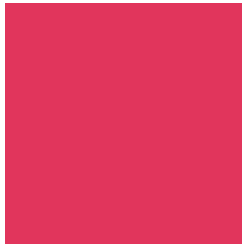
37, 69.027, 27.131



6, 25.284, 11.297

Previews

White Background



This preview shows how the CIELCh color 51, 69.565, 16.373 looks on a white background.

Color Contrast Check

Large Text (above 18pt) WCAG AA ✓ Pass

Any Text WCAG AA ✗ Fail

Large Text (above 18pt) WCAG AAA ✗ Fail

Any Text WCAG AAA ✗ Fail

Black Background



This preview shows how the CIELCh color 51, 69.565, 16.373 looks on a black background.

Color Contrast Check

Large Text (above 18pt) WCAG AA ✓ Pass

Any Text WCAG AA ✓ Pass

Large Text (above 18pt) WCAG AAA ✓ Pass

Any Text WCAG AAA × Fail

If you want to check with other color combinations, try the [Color Contrast Checker](#).

CIELCh 51, 69.565, 16.373

Background



This preview shows how black text looks on a background with the CIELCh color 51, 69.565, 16.373.



This preview shows how white text looks on a background with the CIELCh color 51, 69.565, 16.373.

Color Blindness Simulation

Color vision deficiency is a very complex topic, and I could not describe the different causes any better than Wikipedia does, so if you want to learn more, you should check out their [article about color blindness](#).

Dichromacy



Original Color

51, 69.565, 16.373

Protanopia

51, 2.134, 324.484

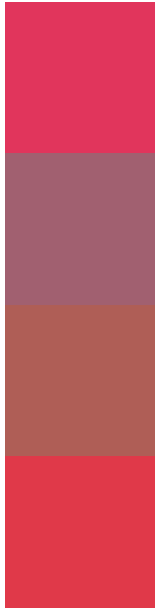
Deuteranopia

51, 23.950, 74.135



Tritanopia
51, 72.803, 30.586

Trichromacy



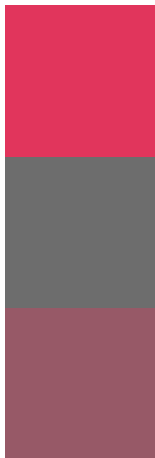
Original Color
51, 69.565, 16.373

Protanomaly
48, 28.589, 4.680

Deuteranomaly
49, 37.368, 31.130

Tritanomaly
51, 71.159, 25.672

Monochromacy



Original Color
51, 69.565, 16.373

Achromatopsia
46, 0.006, 296.813

Achromatomaly
45, 27.500, 6.277

CSS Examples

Text

The CSS property to change the color of the text to CIELCh 51, 69.565, 16.373 is called "color". The color property can be set on classes, ids or directly on the HTML element.

This example shows how text in the color `rgb(225, 53, 92)` looks like.

```
.text, #text, p{  
    color:rgb(225, 53, 92)  
}
```

If you want to add a text shadow in that color use the text-shadow property, you can generate a text shadow directly with our [CSS Text Shadow Generator](#).

Here you see how black text with a 4 pixel rgb(225, 53, 92) colored shadow looks like.

```
.shadow{ text-shadow: 4px 4px 2px rgb(225, 53, 92) }
```

Border

The CSS property to change the border of an element to CIELCh 51, 69.565, 16.373 is called "border". The border property can be set on classes, ids or directly on the HTML element.

This example shows the color as border, it can be applied via the CSS property "border" or "border-color".

```
.border, #border, table{ border:4px solid rgb(225, 53, 92) }
```

If only the border color should be changed use the property `border-color`.

```
.border{ border-color:rgb(225, 53, 92) }
```

If you want to add a box shadow in that color use:

Here you see how a box with a 4 pixel `rgb(225, 53, 92)` colored shadow looks like.

```
.boxshadow{ -moz-box-shadow:4px 4px 4px  
4px rgb(225, 53, 92); -webkit-box-  
shadow:4px 4px 4px 4px rgb(225, 53, 92);  
box-shadow:4px 4px 4px 4px rgb(225, 53,  
92) }
```

Background

The CSS property to change the background color of an element to CIELCh 51, 69.565, 16.373 is called "background". The background property can be set on classes, ids or directly on the HTML element.

```
.background, #background, body{  
background: rgb(225, 53, 92) }
```

If only the background color should be changed can be used:

```
.background{ background-color: rgb(225, 53,  
92) }
```

This example shows the color as background, it is applied via the CSS property "background".

To optimize and compress your CSS code, you can use our [online CSS compressor and optimizer](#) based on csstidy. If you want to create a linear or radial gradient as background or border, check our [CSS Gradient Generator](#).

Hey! You found this booklet interesting? Support Converting Colors with the new Membership Option!

The pro membership hides all ads, plus gives you double the colors in the color bucket, and more awesome pro features!

[Learn more, Memberships starting at \\$2.50/m!](#)

**Follow me
on Twitter!**

@ConvertingColor