

Converting Colors

CIELCh(51, 69.360, 6.389)

Have a look what the booklet for
CIELCh(51, 69.360, 6.389) contains.

CIELCh(51, 69.420, 6.494)	3
<i>Conversions</i>	4
<i>Details</i>	6
<i>Harmonies</i>	11
<i>Previews</i>	20
<i>Color Blindness Simulation</i>	23
<i>CSS Examples</i>	26

Color

CIELCh(51, 69.420, 6.494)

Conversions

Conversions Part 1

Format	Color
Hex	E0316F
RGB	224, 49, 111
RGB Percent	88%, 19%, 44%
CMY	0.1205, 0.8065, 0.5638
CMYK	0.00, 0.78, 0.50, 0.12
HSL	339°, 74%, 54%
HSV	339°, 78%, 88%
XYZ	34.8202, 19.2686, 16.9865
YIQ	108.3930, 84.3980, 56.3820

Conversions

Conversions Part 2

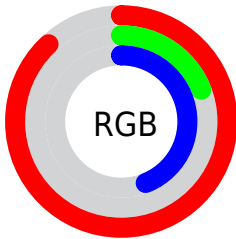
Format	Color
R_{YB}	224, 49, 111
Decimal	14692719
CIE _{Lab}	51.00, 68.97, 7.85
CIE _{LCh}	51, 69.420, 6.494
Yxy	19.2686, 0.4899, 0.2711
Android (android.graphics.Color)	4292882799 (0xFFE0316F)
YUV	108.3930, 1.2853, 101.3873
Hunter-Lab	43.8960, 64.7759, 7.7837

Details

The CIELCh color **51, 69.420, 6.494** is a dark color, and the websafe version is hex **CC3366**. The color can be described as dark washed rose. A complement of this color would be **80, 59.894, 162.232**, and the grayscale version is **46, 0.006, 296.813**.

A 20% lighter version of the original color is **66, 59.087, 0.479**, and **34, 60.394, 11.573** is the 20% darker color. If you saturate the color by 10%, you get **49, 74.163, 10.713**, and if you desaturate by 10%, it is **54, 62.950, 3.158**.

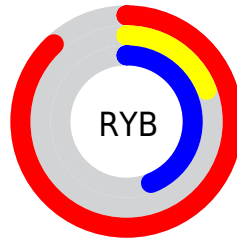
Distribution



Red (88%)

Green (19%)

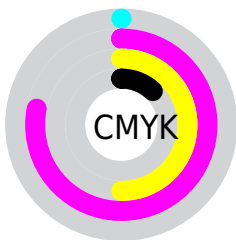
Blue (44%)



Red (88%)

Yellow (19%)

Blue (44%)

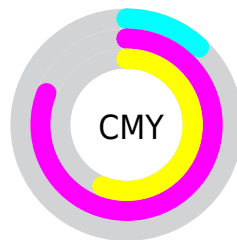


Cyan (0%)

Magenta (78%)

Yellow (50%)

Black (12%)



Cyan (12%)

Magenta (81%)

Yellow (56%)

Brightness & Saturation Gradients

These gradients show how the CIELCh color 51, 69.420, 6.494 changes by changing the brightness by 10 percent. The first figure shows a shift by +10% for each color and the second figure -10%.

Similar to the brightness gradients but the following saturation gradients show a change of the CIELCh color 51, 69.420, 6.494 by changing the saturation by 10% instead.

 51, 69.420, 6.494  51, 69.420, 6.494

 100, 69.420, 6.494  41, 69.420, 6.494

 71, 69.420, 6.494  31, 69.420, 6.494

 81, 69.420, 6.494  21, 69.420, 6.494


 91, 69.420, 6.494  11, 69.420, 6.494

 1, 69.420, 6.494

 0, 69.420, 6.494

 51, 69.420, 6.494  51, 69.420, 6.494

 49, 74.163, 10.713  54, 62.950, 3.158

 48, 77.441, 15.840  58, 54.994, 0.530

48, 78.084, 16.892

62, 45.989,
358.435

67, 36.396,
356.732

73, 26.599,
355.313

79, 16.867,
354.101

84, 7.370, 353.022

90, 1.800, 172.453

97, 10.601,
171.407

Harmonies

Complementary

The Complementary color scheme is a pair of colors which are on the opposite of each other on the color wheel.



51, 69.420, 6.494



80, 59.894, 162.232

Rectangle

The Rectangle color scheme consists of four colors that form a rectangle on the color wheel.



51, 69.420, 6.494



51, 69.420, 56.494



51, 69.420, 186.494



51, 69.420, 236.494

Sweetspot

The Sweet Spot groups the original color and five complimentary colors.



51, 69.416, 6.496



85, 24.102, 354.705



46, 98.023, 316.238



43, 16.760, 355.158



0, 0.000, 0.000



53, 0.007, 296.813

Same Dimension

The Same Dimension uses a secret algorithm to generate beautiful new colors.



51, 69.416, 6.496



55, 84.235, 14.058



53, 73.781, 38.638



44, 5.247, 353.175



37, 64.908, 15.905



6, 25.495, 4.640

Inverse Universe

The Inverse Universe completely reimagines the original color for something new.



51, 69.416, 6.496



55, 84.235, 14.058



75, 37.873, 216.670



44, 5.247, 353.175



37, 64.908, 15.905



6, 25.495, 4.640

Previews

White Background



This preview shows how the CIELCh color 51, 69.420, 6.494 looks on a white background.

Color Contrast Check

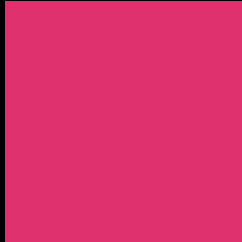
Large Text (above 18pt) WCAG AA ✓ Pass

Any Text WCAG AA ✗ Fail

Large Text (above 18pt) WCAG AAA ✗ Fail

Any Text WCAG AAA ✗ Fail

Black Background



This preview shows how the CIELCh color 51, 69.420, 6.494 looks on a black background.

Color Contrast Check

Large Text (above 18pt) WCAG AA ✓ Pass

Any Text WCAG AA ✓ Pass

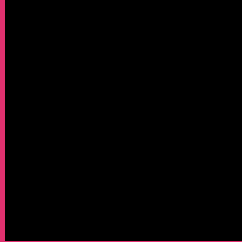
Large Text (above 18pt) WCAG AAA ✓ Pass

Any Text WCAG AAA × Fail

If you want to check with other color combinations, try the [Color Contrast Checker](#).

CIELCh 51, 69.420, 6.494

Background



This preview shows how black text looks on a background with the CIELCh color 51, 69.420, 6.494.

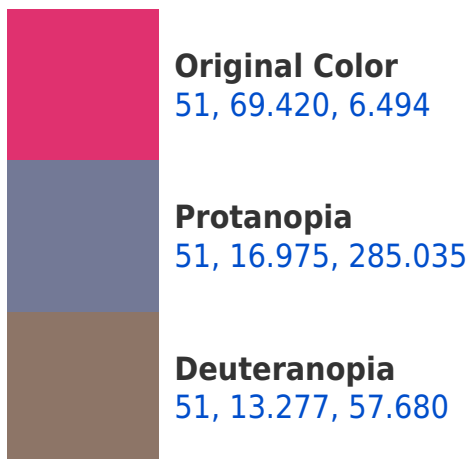


This preview shows how white text looks on a background with the CIELCh color 51, 69.420, 6.494.

Color Blindness Simulation

Color vision deficiency is a very complex topic, and I could not describe the different causes any better than Wikipedia does, so if you want to learn more, you should check out their [article about color blindness](#).

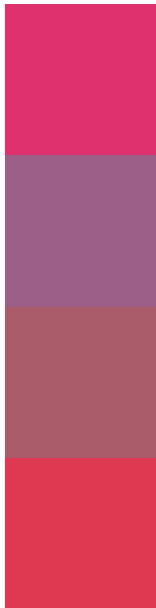
Dichromacy





Tritanopia
51, 71.257, 30.437

Trichromacy



Original Color
51, 69.420, 6.494

Protanomaly
48, 33.081, 337.850

Deuteranomaly
49, 34.326, 10.988

Tritanomaly
51, 69.322, 22.003

Monochromacy



Original Color
51, 69.420, 6.494

Achromatopsia
46, 0.006, 296.813

Achromatomaly
45, 29.513, 356.852

CSS Examples

Text

The CSS property to change the color of the text to CIELCh 51, 69.420, 6.494 is called "color". The color property can be set on classes, ids or directly on the HTML element.

This example shows how text in the color `rgb(224, 49, 111)` looks like.

```
.text, #text, p{  
    color:rgb(224, 49, 111)  
}
```

If you want to add a text shadow in that color use the text-shadow property, you can generate a text shadow directly with our [CSS Text Shadow Generator](#).

Here you see how black text with a 4 pixel rgb(224, 49, 111) colored shadow looks like.

```
.shadow{ text-shadow: 4px 4px 2px rgb(224, 49, 111) }
```

Border

The CSS property to change the border of an element to CIELCh 51, 69.420, 6.494 is called "border". The border property can be set on classes, ids or directly on the HTML element.

This example shows the color as border, it can be applied via the CSS property "border" or "border-color".

```
.border, #border, table{ border:4px solid rgb(224, 49, 111) }
```

If only the border color should be changed use the property `border-color`.

```
.border{ border-color:rgb(224, 49, 111) }
```

If you want to add a box shadow in that color use:

Here you see how a box with a 4 pixel `rgb(224, 49, 111)` colored shadow looks like.

```
.boxshadow{ -moz-box-shadow:4px 4px 4px  
4px rgb(224, 49, 111); -webkit-box-  
shadow:4px 4px 4px 4px rgb(224, 49, 111);  
box-shadow:4px 4px 4px 4px rgb(224, 49,  
111) }
```

Background

The CSS property to change the background color of an element to CIELCh 51, 69.420, 6.494 is called "background". The background property can be set on classes, ids or directly on the HTML element.

```
.background, #background, body{  
background: rgb(224, 49, 111) }
```

If only the background color should be changed can be used:

```
.background{ background-color: rgb(224, 49,  
111) }
```

This example shows the color as background, it is applied via the CSS property "background".

To optimize and compress your CSS code, you can use our [online CSS compressor and optimizer](#) based on csstidy. If you want to create a linear or radial gradient as background or border, check our [CSS Gradient Generator](#).

Hey! You found this booklet interesting? Support Converting Colors with the new Membership Option!

The pro membership hides all ads, plus gives you double the colors in the color bucket, and more awesome pro features!

[Learn more, Memberships starting at \\$2.50/m!](#)

**Follow me
on Twitter!**

@ConvertingColor