

Converting Colors

CIELCh(51, 71.255, 9.151)

Have a look what the booklet for
CIELCh(51, 71.255, 9.151) contains.

CIELCh(51, 71.298, 8.924)	3
<i>Conversions</i>	4
<i>Details</i>	6
<i>Harmonies</i>	11
<i>Previews</i>	20
<i>Color Blindness Simulation</i>	23
<i>CSS Examples</i>	26

Color

CIELCh(51, 71.298, 8.924)

Conversions

Conversions Part 1

Format	Color
Hex	E32D6A
RGB	227, 45, 106
RGB Percent	89%, 18%, 42%
CMY	0.1095, 0.8231, 0.5841
CMYK	0.00, 0.80, 0.53, 0.11
HSL	340°, 77%, 53%
HSV	340°, 80%, 89%
XYZ	35.2484, 19.2686, 15.5126
YIQ	106.3720, 88.8910, 57.5550

Conversions

Conversions Part 2

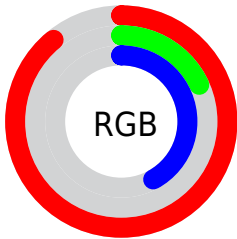
Format	Color
RYB	227, 45, 106
Decimal	14888298
CIELab	51.00, 70.43, 11.06
CIELCh	51, 71.298, 8.924
Yxy	19.2686, 0.5033, 0.2751
Android (android.graphics.Color)	4293078378 (0xFFE32D6A)
YUV	106.3720, -0.1834, 105.7908
Hunter-Lab	43.8960, 66.5169, 9.7745

Details

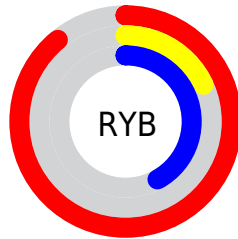
The CIELCh color **51, 71.298, 8.924** is a dark color, and the websafe version is hex **CC3366**. The color can be described as dark washed rose. A complement of this color would be **81, 60.309, 163.103**, and the grayscale version is **45, 0.006, 296.813**.

A 20% lighter version of the original color is **66, 59.500, 2.556**, and **35, 61.765, 15.241** is the 20% darker color. If you saturate the color by 10%, you get **49, 75.952, 13.464**, and if you desaturate by 10%, it is **54, 64.976, 5.307**.

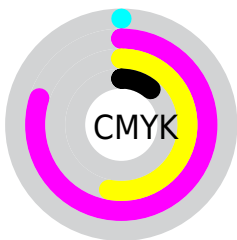
Distribution



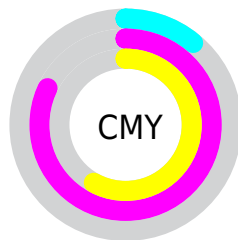
- Red (89%)
- Green (18%)
- Blue (42%)



- Red (89%)
- Yellow (18%)
- Blue (42%)



- Cyan (0%)
- Magenta (80%)
- Yellow (53%)
- Black (11%)



- Cyan (11%)
- Magenta (82%)
- Yellow (58%)

Brightness & Saturation Gradients

These gradients show how the CIELCh color 51, 71.298, 8.924 changes by changing the brightness by 10 percent. The first figure shows a shift by +10% for each color and the second figure -10%.

Similar to the brightness gradients but the following saturation gradients show a change of the CIELCh color 51, 71.298, 8.924 by changing the saturation by 10% instead.

 51, 71.298, 8.924  51, 71.298, 8.924

 100, 71.298, 8.924  41, 71.298, 8.924

 71, 71.298, 8.924  31, 71.298, 8.924

 81, 71.298, 8.924  21, 71.298, 8.924


 91, 71.298, 8.924  11, 71.298, 8.924

 1, 71.298, 8.924

 0, 71.298, 8.924

 51, 71.298, 8.924  51, 71.298, 8.924

 49, 75.952, 13.464  54, 64.976, 5.307

 48, 79.401, 18.719  58, 57.139, 2.459

■ 62, 48.189, 0.201

■ 67, 38.592,
358.380

■ 72, 28.748,
356.876

■ 78, 18.946,
355.605

■ 84, 9.371, 354.492

■ 90, 0.128, 349.608

■ 96, 8.737, 172.817

Harmonies

Complementary

The Complementary color scheme is a pair of colors which are on the opposite of each other on the color wheel.



51, 71.298, 8.924



81, 60.309, 163.103

Rectangle

The Rectangle color scheme consists of four colors that form a rectangle on the color wheel.



51, 71.298, 8.924



51, 71.298, 58.924



51, 71.298, 188.924



51, 71.298, 238.924

Sweetspot

The Sweet Spot groups the original color and five complimentary colors.



51, 71.294, 8.926



84, 24.962, 356.092



46, 100.639, 316.691



43, 17.231, 356.553



0, 0.000, 0.000



53, 0.007, 296.813

Same Dimension

The Same Dimension uses a secret algorithm to generate beautiful new colors.



51, 71.294, 8.926



54, 85.377, 16.906



53, 76.181, 39.823



45, 5.290, 354.420



38, 66.049, 17.739



7, 26.708, 6.476

Inverse Universe

The Inverse Universe completely reimagines the original color for something new.



51, 71.294, 8.926



54, 85.377, 16.906



74, 38.279, 220.012



45, 5.290, 354.420



38, 66.049, 17.739



7, 26.708, 6.476

Previews

White Background



This preview shows how the CIELCh color 51, 71.298, 8.924 looks on a white background.

Color Contrast Check

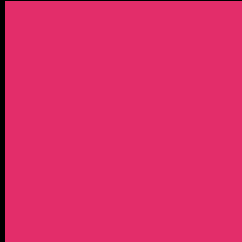
Large Text (above 18pt) WCAG AA ✓ Pass

Any Text WCAG AA ✗ Fail

Large Text (above 18pt) WCAG AAA ✗ Fail

Any Text WCAG AAA ✗ Fail

Black Background



This preview shows how the CIELCh color 51, 71.298, 8.924 looks on a black background.

Color Contrast Check

Large Text (above 18pt) WCAG AA ✓ Pass

Any Text WCAG AA ✓ Pass

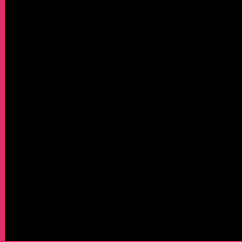
Large Text (above 18pt) WCAG AAA ✓ Pass

Any Text WCAG AAA × Fail

If you want to check with other color combinations, try the [Color Contrast Checker](#).

CIELCh 51, 71.298, 8.924

Background



This preview shows how black text looks on a background with the CIELCh color 51, 71.298, 8.924.



This preview shows how white text looks on a background with the CIELCh color 51, 71.298, 8.924.

Color Blindness Simulation

Color vision deficiency is a very complex topic, and I could not describe the different causes any better than Wikipedia does, so if you want to learn more, you should check out their [article about color blindness](#).

Dichromacy



Original Color

51, 71.298, 8.924

Protanopia

51, 14.027, 285.952

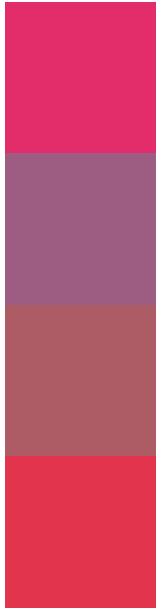
Deuteranopia

51, 16.127, 65.685



Tritanopia
51, 74.294, 31.247

Trichromacy



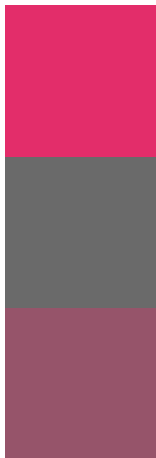
Original Color
51, 71.298, 8.924

Protanomaly
48, 33.164, 342.412

Deuteranomaly
49, 35.732, 16.366

Tritanomaly
51, 72.043, 23.333

Monochromacy



Original Color
51, 71.298, 8.924

Achromatopsia
45, 0.006, 296.813

Achromatomaly
44, 30.194, 358.931

CSS Examples

Text

The CSS property to change the color of the text to CIELCh 51, 71.298, 8.924 is called "color". The color property can be set on classes, ids or directly on the HTML element.

This example shows how text in the color `rgb(227, 45, 106)` looks like.

```
.text, #text, p{  
    color:rgb(227, 45, 106)  
}
```

If you want to add a text shadow in that color use the text-shadow property, you can generate a text shadow directly with our [CSS Text Shadow Generator](#).

Here you see how black text with a 4 pixel rgb(227, 45, 106) colored shadow looks like.

```
.shadow{ text-shadow: 4px 4px 2px rgb(227, 45, 106) }
```

Border

The CSS property to change the border of an element to CIELCh 51, 71.298, 8.924 is called "border". The border property can be set on classes, ids or directly on the HTML element.

This example shows the color as border, it can be applied via the CSS property "border" or "border-color".

```
.border, #border, table{ border:4px solid rgb(227, 45, 106) }
```

If only the border color should be changed use the property `border-color`.

```
.border{ border-color:rgb(227, 45, 106) }
```

If you want to add a box shadow in that color use:

Here you see how a box with a 4 pixel `rgb(227, 45, 106)` colored shadow looks like.

```
.boxshadow{ -moz-box-shadow:4px 4px 4px  
4px rgb(227, 45, 106); -webkit-box-  
shadow:4px 4px 4px 4px rgb(227, 45, 106);  
box-shadow:4px 4px 4px 4px rgb(227, 45,  
106) }
```

Background

The CSS property to change the background color of an element to CIELCh 51, 71.298, 8.924 is called "background". The background property can be set on classes, ids or directly on the HTML element.

```
.background, #background, body{  
background: rgb(227, 45, 106) }
```

If only the background color should be changed can be used:

```
.background{ background-color: rgb(227, 45,  
106) }
```

This example shows the color as background, it is applied via the CSS property "background".

To optimize and compress your CSS code, you can use our [online CSS compressor and optimizer](#) based on csstidy. If you want to create a linear or radial gradient as background or border, check our [CSS Gradient Generator](#).

Hey! You found this booklet interesting? Support Converting Colors with the new Membership Option!

The pro membership hides all ads, plus gives you double the colors in the color bucket, and more awesome pro features!

[Learn more, Memberships starting at \\$2.50/m!](#)

**Follow me
on Twitter!**

@ConvertingColor