

Converting Colors

CIELCh(51, 74.774, 10.728)

Have a look what the booklet for
CIELCh(51, 74.774, 10.728) contains.

CIELCh(51, 74.929, 10.572)	3
<i>Conversions</i>	4
<i>Details</i>	6
<i>Harmonies</i>	11
<i>Previews</i>	20
<i>Color Blindness Simulation</i>	23
<i>CSS Examples</i>	26

Color

CIELCh(51, 74.929, 10.572)

Conversions

Conversions Part 1

Format	Color
Hex	E82366
RGB	232, 35, 102
RGB Percent	91%, 14%, 40%
CMY	0.0909, 0.8637, 0.6005
CMYK	0.00, 0.85, 0.56, 0.09
HSL	340°, 81%, 52%
HSV	340°, 85%, 91%
XYZ	36.2054, 19.2686, 14.3459
YIQ	101.5410, 95.9050, 62.6010

Conversions

Conversions Part 2

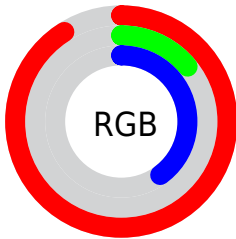
Format	Color
R_{YB}	232, 35, 102
Decimal	15213414
CIE Lab	51.00, 73.66, 13.75
CIE LCh	51, 74.929, 10.572
Yxy	19.2686, 0.5186, 0.2760
Android (android.graphics.Color)	4293403494 (0xFFE82366)
YUV	101.5410, 0.2263, 114.4125
Hunter-Lab	43.8960, 70.4086, 11.3503

Details

The CIELCh color **51, 74.929, 10.572** is a dark color, and the websafe version is hex **FF3366**. The color can be described as dark washed rose. A complement of this color would be **82, 63.895, 161.706**, and the grayscale version is **43, 0.006, 296.813**.

A 20% lighter version of the original color is **65, 61.332, 3.352**, and **35, 63.449, 17.819** is the 20% darker color. If you saturate the color by 10%, you get **50, 78.820, 15.562**, and if you desaturate by 10%, it is **53, 69.408, 6.537**.

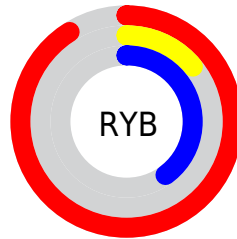
Distribution



Red (91%)

Green (14%)

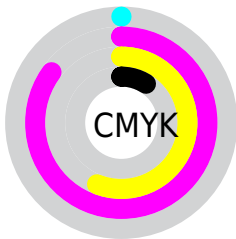
Blue (40%)



Red (91%)

Yellow (14%)

Blue (40%)

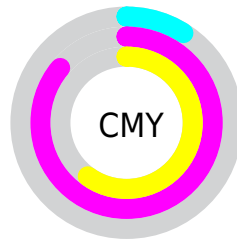


Cyan (0%)

Magenta (85%)

Yellow (56%)

Black (9%)



Cyan (9%)

Magenta (86%)

Yellow (60%)

Brightness & Saturation Gradients

These gradients show how the CIELCh color 51, 74.929, 10.572 changes by changing the brightness by 10 percent. The first figure shows a shift by +10% for each color and the second figure -10%.

Similar to the brightness gradients but the following saturation gradients show a change of the CIELCh color 51, 74.929, 10.572 by changing the saturation by 10% instead.

■ 51, 74.929, 10.572

■ 51, 74.929, 10.572

■ 100, 74.929,
10.572

■ 41, 74.929, 10.572

■ 71, 74.929, 10.572

■ 31, 74.929, 10.572

■ 81, 74.929, 10.572

■ 21, 74.929, 10.572

■ 91, 74.929, 10.572

■ 11, 74.929, 10.572

■ 1, 74.929, 10.572

■ 0, 74.929, 10.572

■ 51, 74.929, 10.572

■ 51, 74.929, 10.572

■ 50, 78.820, 15.562

■ 53, 69.408, 6.537

■ 49, 80.491, 18.263

■ 57, 62.204, 3.352

61, 53.624, 0.840

66, 44.140,
358.833

71, 34.204,
357.194

77, 24.171,
355.823

83, 14.282,
354.645

89, 4.683, 353.562

95, 4.554, 172.897

Harmonies

Complementary

The Complementary color scheme is a pair of colors which are on the opposite of each other on the color wheel.



51, 74.929, 10.572



82, 63.895, 161.706

Rectangle

The Rectangle color scheme consists of four colors that form a rectangle on the color wheel.



51, 74.929, 10.572



51, 74.929, 60.572



51, 74.929, 190.572



51, 74.929, 240.572

Sweetspot

The Sweet Spot groups the original color and five complimentary colors.



51, 74.925, 10.574



83, 27.186, 355.966



45, 105.900, 316.557



42, 18.507, 356.426



0, 0.000, 0.000



53, 0.007, 296.813

Same Dimension

The Same Dimension uses a secret algorithm to generate beautiful new colors.



51, 74.925, 10.574



54, 86.627, 18.588



53, 82.558, 40.586



45, 5.307, 354.045



38, 65.913, 17.212



7, 26.719, 6.135

Inverse Universe

The Inverse Universe completely reimagines the original color for something new.



51, 74.925, 10.574



54, 86.627, 18.588



75, 39.562, 221.107



45, 5.307, 354.045



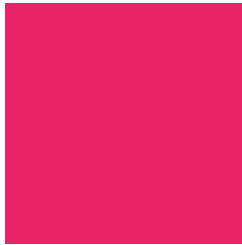
38, 65.913, 17.212



7, 26.719, 6.135

Previews

White Background



This preview shows how the CIELCh color 51, 74.929, 10.572 looks on a white background.

Color Contrast Check

Large Text (above 18pt) WCAG AA ✓ Pass

Any Text WCAG AA ✗ Fail

Large Text (above 18pt) WCAG AAA ✗ Fail

Any Text WCAG AAA ✗ Fail

Black Background



This preview shows how the CIELCh color 51, 74.929, 10.572 looks on a black background.

Color Contrast Check

Large Text (above 18pt) WCAG AA ✓ Pass

Any Text WCAG AA ✓ Pass

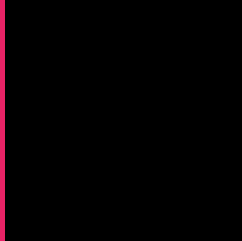
Large Text (above 18pt) WCAG AAA ✓ Pass

Any Text WCAG AAA × Fail

If you want to check with other color combinations, try the [Color Contrast Checker](#).

CIELCh 51, 74.929, 10.572

Background



This preview shows how black text looks on a background with the CIELCh color 51, 74.929, 10.572.

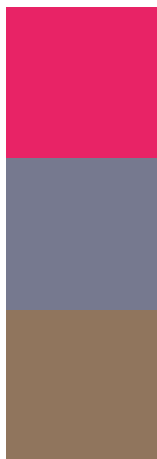


This preview shows how white text looks on a background with the CIELCh color 51, 74.929, 10.572.

Color Blindness Simulation

Color vision deficiency is a very complex topic, and I could not describe the different causes any better than Wikipedia does, so if you want to learn more, you should check out their [article about color blindness](#).

Dichromacy



Original Color

51, 74.929, 10.572

Protanopia

51, 12.844, 286.849

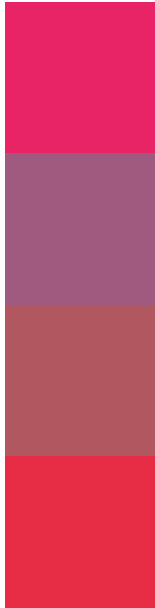
Deuteranopia

51, 18.566, 68.064



Tritanopia
51, 80.089, 33.145

Trichromacy



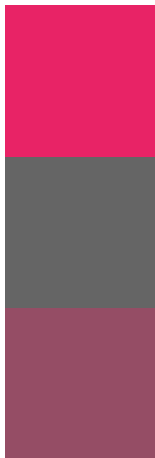
Original Color
51, 74.929, 10.572

Protanomaly
47, 34.672, 345.032

Deuteranomaly
48, 38.935, 17.706

Tritanomaly
51, 77.210, 25.664

Monochromacy



Original Color
51, 74.929, 10.572

Achromatopsia
43, 0.006, 296.813

Achromatomaly
42, 32.982, 359.685

CSS Examples

Text

The CSS property to change the color of the text to CIELCh 51, 74.929, 10.572 is called "color". The color property can be set on classes, ids or directly on the HTML element.

This example shows how text in the color `rgb(232, 35, 102)` looks like.

```
.text, #text, p{  
    color:rgb(232, 35, 102)  
}
```

If you want to add a text shadow in that color use the text-shadow property, you can generate a text shadow directly with our [CSS Text Shadow Generator](#).

Here you see how black text with a 4 pixel rgb(232, 35, 102) colored shadow looks like.

```
.shadow{ text-shadow: 4px 4px 2px rgb(232, 35, 102) }
```

Border

The CSS property to change the border of an element to CIELCh 51, 74.929, 10.572 is called "border". The border property can be set on classes, ids or directly on the HTML element.

This example shows the color as border, it can be applied via the CSS property "border" or "border-color".

```
.border, #border, table{ border:4px solid rgb(232, 35, 102) }
```

If only the border color should be changed use the property `border-color`.

```
.border{ border-color:rgb(232, 35, 102) }
```

If you want to add a box shadow in that color use:

Here you see how a box with a 4 pixel `rgb(232, 35, 102)` colored shadow looks like.

```
.boxshadow{ -moz-box-shadow:4px 4px 4px  
4px rgb(232, 35, 102); -webkit-box-  
shadow:4px 4px 4px 4px rgb(232, 35, 102);  
box-shadow:4px 4px 4px 4px rgb(232, 35,  
102) }
```

Background

The CSS property to change the background color of an element to CIELCh 51, 74.929, 10.572 is called "background". The background property can be set on classes, ids or directly on the HTML element.

```
.background, #background, body{  
background: rgb(232, 35, 102) }
```

If only the background color should be changed can be used:

```
.background{ background-color: rgb(232, 35,  
102) }
```

This example shows the color as background, it is applied via the CSS property "background".

To optimize and compress your CSS code, you can use our [online CSS compressor and optimizer](#) based on csstidy. If you want to create a linear or radial gradient as background or border, check our [CSS Gradient Generator](#).

Hey! You found this booklet interesting? Support Converting Colors with the new Membership Option!

The pro membership hides all ads, plus gives you double the colors in the color bucket, and more awesome pro features!

[Learn more, Memberships starting at \\$2.50/m!](#)

**Follow me
on Twitter!**

@ConvertingColor