

Converting Colors

CIELCh(52, 16.039, 65.749)

Have a look what the booklet for
CIELCh(52, 16.039, 65.749) contains.

CIELCh(52, 16.068, 65.728)	3
<i>Conversions</i>	4
<i>Details</i>	6
<i>Harmonies</i>	11
<i>Previews</i>	20
<i>Color Blindness Simulation</i>	23
<i>CSS Examples</i>	26

Color

CIELCh(52, 16.068, 65.728)

Conversions

Conversions Part 1

Format	Color
Hex	907763
RGB	144, 119, 99
RGB Percent	56%, 47%, 39%
CMY	0.4339, 0.5320, 0.6105
CMYK	0.00, 0.17, 0.31, 0.43
HSL	27°, 18%, 48%
HSV	27°, 31%, 57%
XYZ	20.4704, 20.1443, 14.6971
YIQ	124.1950, 21.3200, -0.9200

Conversions

Conversions Part 2

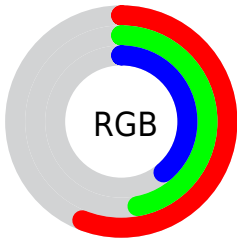
Format	Color
RYB	144, 135, 99
Decimal	9467747
CIELab	52.00, 6.61, 14.65
CIElCh	52, 16.068, 65.728
Yxy	20.1443, 0.3701, 0.3642
Android (android.graphics.Color)	4287657827 (0xFF907763)
YUV	124.1950, -12.4211, 17.3690
Hunter-Lab	44.8824, 2.8676, 12.0027

Details

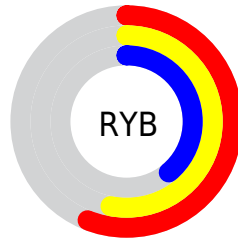
The CIELCh color $52, 16.068, 65.728$ is a dark color, and the websafe version is hex 996666 . A complement of this color would be $51, 14.340, 253.711$, and the grayscale version is $52, 0.007, 296.813$.

A 20% lighter version of the original color is $72, 15.838, 65.653$, and $32, 16.380, 66.553$ is the 20% darker color. If you saturate the color by 10%, you get $50, 21.822, 64.659$, and if you desaturate by 10%, it is $54, 10.617, 66.820$.

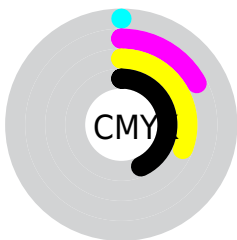
Distribution



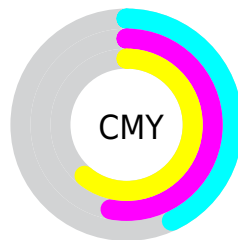
- Red (56%)
- Green (47%)
- Blue (39%)



- Red (56%)
- Yellow (53%)
- Blue (39%)



- Cyan (0%)
- Magenta (17%)
- Yellow (31%)
- Black (43%)



- Cyan (43%)
- Magenta (53%)
- Yellow (61%)

Brightness & Saturation Gradients

These gradients show how the CIELCh color 52, 16.068, 65.728 changes by changing the brightness by 10 percent. The first figure shows a shift by +10% for each color and the second figure -10%.

Similar to the brightness gradients but the following saturation gradients show a change of the CIELCh color 52, 16.068, 65.728 by changing the saturation by 10% instead.

■ 52, 16.068, 65.728

■ 52, 16.068, 65.728

■ 100, 16.068,
65.728

■ 42, 16.068, 65.728

■ 72, 16.068, 65.728

■ 32, 16.068, 65.728

■ 82, 16.068, 65.728

■ 22, 16.068, 65.728

■ 92, 16.068, 65.728

■ 12, 16.068, 65.728

■ 2, 16.068, 65.728

■ 0, 16.068, 65.728

■ 52, 16.068, 65.728

■ 52, 16.068, 65.728

■ 50, 21.822, 64.659

■ 54, 10.617, 66.820

■ 47, 27.872, 63.595

■ 57, 5.455, 67.891

■ 45, 34.173, 62.533

■ 60, 0.561, 68.471

■ 43, 40.597, 61.430

■ 62, 4.091, 250.208

■ 41, 46.868, 60.176

■ 65, 8.528, 251.229

■ 39, 52.447, 58.540

■ 68, 12.773,
252.250

■ 37, 56.932, 57.054

■ 70, 16.849,
253.247

■ 73, 20.776,
254.211

■ 76, 24.572,
255.139

Harmonies

Complementary

The Complementary color scheme is a pair of colors which are on the opposite of each other on the color wheel.



52, 16.068, 65.728



51, 14.340, 253.711

Rectangle

The Rectangle color scheme consists of four colors that form a rectangle on the color wheel.



52, 16.068, 65.728



52, 16.068, 115.728



52, 16.068, 245.728



52, 16.068, 295.728

Sweetspot

The Sweet Spot groups the original color and five complimentary colors.



52, 16.068, 65.736



74, 5.429, 68.098



48, 23.366, 342.829



38, 3.774, 67.963



88, 0.010, 296.813



40, 0.006, 296.813

Same Dimension

The Same Dimension uses a secret algorithm to generate beautiful new colors.



52, 16.068, 65.736



65, 24.157, 65.024



58, 23.590, 104.246



29, 2.713, 68.100



35, 54.182, 57.302



1, 1.796, 69.169

Inverse Universe

The Inverse Universe completely reimagines the original color for something new.



51, 14.340, 253.711



63, 20.974, 255.032



45, 25.135, 291.271



29, 2.637, 250.327



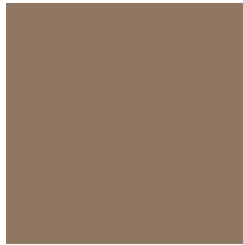
31, 39.336, 276.694



1, 1.796, 249.184

Previews

White Background



This preview shows how the CIELCh color 52, 16.068, 65.728 looks on a white background.

Color Contrast Check

Large Text (above 18pt) WCAG AA ✓ Pass

Any Text WCAG AA × Fail

Large Text (above 18pt) WCAG AAA × Fail

Any Text WCAG AAA × Fail

Black Background



This preview shows how the CIELCh color 52, 16.068, 65.728 looks on a black background.

Color Contrast Check

Large Text (above 18pt) WCAG AA ✓ Pass

Any Text WCAG AA ✓ Pass

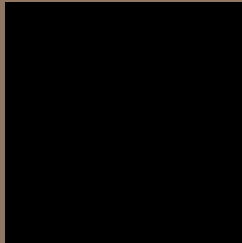
Large Text (above 18pt) WCAG AAA ✓ Pass

Any Text WCAG AAA × Fail

If you want to check with other color combinations, try the [Color Contrast Checker](#).

CIELCh 52, 16.068, 65.728

Background



This preview shows how black text looks on a background with the CIELCh color 52, 16.068, 65.728.



This preview shows how white text looks on a background with the CIELCh color 52, 16.068, 65.728.

Color Blindness Simulation

Color vision deficiency is a very complex topic, and I could not describe the different causes any better than Wikipedia does, so if you want to learn more, you should check out their [article about color blindness](#).

Dichromacy



Original Color

52, 16.068, 65.728

Protanopia

52, 13.605, 95.702

Deuteranopia

52, 16.385, 64.623



Tritanopia
52, 13.654, 358.726

Trichromacy



Original Color
52, 16.068, 65.728

Protanomaly
52, 14.124, 83.094

Deuteranomaly
52, 16.385, 64.623

Tritanomaly
52, 12.170, 23.461

Monochromacy



Original Color
52, 16.068, 65.728

Achromatopsia
52, 0.007, 296.813

Achromatomaly
52, 5.487, 67.009

CSS Examples

Text

The CSS property to change the color of the text to CIELCh 52, 16.068, 65.728 is called "color". The color property can be set on classes, ids or directly on the HTML element.

This example shows how text in the color `rgb(144, 119, 99)` looks like.

```
.text, #text, p{  
    color:rgb(144, 119, 99)  
}
```

If you want to add a text shadow in that color use the text-shadow property, you can generate a text shadow directly with our [CSS Text Shadow Generator](#).

Here you see how black text with a 4 pixel rgb(144, 119, 99) colored shadow looks like.

```
.shadow{ text-shadow: 4px 4px 2px rgb(144, 119, 99) }
```

Border

The CSS property to change the border of an element to CIELCh 52, 16.068, 65.728 is called "border". The border property can be set on classes, ids or directly on the HTML element.

This example shows the color as border, it can be applied via the CSS property "border" or "border-color".

```
.border, #border, table{ border:4px solid rgb(144, 119, 99) }
```

If only the border color should be changed use the property `border-color`.

```
.border{ border-color:rgb(144, 119, 99) }
```

If you want to add a box shadow in that color use:

Here you see how a box with a 4 pixel `rgb(144, 119, 99)` colored shadow looks like.

```
.boxshadow{ -moz-box-shadow:4px 4px 4px  
4px rgb(144, 119, 99); -webkit-box-  
shadow:4px 4px 4px 4px rgb(144, 119, 99);  
box-shadow:4px 4px 4px 4px rgb(144, 119,  
99) }
```

Background

The CSS property to change the background color of an element to CIELCh 52, 16.068, 65.728 is called "background". The background property can be set on classes, ids or directly on the HTML element.

```
.background, #background, body{  
background: rgb(144, 119, 99) }
```

If only the background color should be changed can be used:

```
.background{ background-color: rgb(144,  
119, 99) }
```

This example shows the color as background, it is applied via the CSS property "background".

To optimize and compress your CSS code, you can use our [online CSS compressor and optimizer](#) based on csstidy. If you want to create a linear or radial gradient as background or border, check our [CSS Gradient Generator](#).

Hey! You found this booklet interesting? Support Converting Colors with the new Membership Option!

The pro membership hides all ads, plus gives you double the colors in the color bucket, and more awesome pro features!

[Learn more, Memberships starting at \\$2.50/m!](#)

**Follow me
on Twitter!**

@ConvertingColor